



FROM: T.G. Kruger, **Tel:** 012 657 4043, **Email:** theuns.kruger@treasury.gov.za

BAS SYSTEM CONTROLLERS

NOTICE NUMBER 2 OF 2025

GUIDELINES FOR FINANCIAL YEAR-END CLOSURE: 2024/2025

1. The objective of this document is to provide Departments with a guideline for Financial Year-end closure.
2. The target date set by National Treasury (Refer to the **National Treasury Instruction No 1 of 2025/2026**) for the closure of the 2024/2025 financial year is **29 April 2025**.
3. In order to comply with Paragraph 17.1 of the Treasury Regulations and Section 40(1) (a) of the PFMA, departments must timeously clear control (suspense) accounts and exceptions.
4. Year-end requests should be logged as soon as possible but not later than 12 working days before your proposed closure date, for requests to be prioritized and resolved before the force closure date.
5. The following checklist serves as a guideline to assist departments to successfully close the **2024/2025 financial** year within the set target date:

General FYE Checklist	Tick box
All interface exceptions must be cleared before closing the year, especially category G deductions.	
All control (suspense) accounts must be cleared prior to the financial year-end in accordance with the rules as per Annexure A.	
Departments must timeously reconcile the bank statement balances with the bank balance according to the general ledger as of 31 March 2025.	
Departments must timeously ensure that ex-gratia payments and write-off transactions are properly approved and recorded. Debt write-off transactions cannot be captured after the financial year-end closure.	
Budget opening journals must be reconciled against the available budget.	
Exchequer releases (fund requisitions) must be reconciled and properly recorded.	
Ensure that all financial transactions on the Outstanding Transaction Report are cleared before the Financial year-end. Including duplicate interface payments that need to be authorised or cancelled.	
For expenditure to be recorded against the current financial year's budget (2024/2025 financial year), the department must ensure the expenditure is authorised by no later than 31 March 2025 . The settlement date of these payments should be defaulted by the system and not changed by the department.	
Prepare and forward financial year-end mappings for Donor-, Trading- and Trust Funds etc. to LOGIK Contact Center for capturing as per Annexure B no later than 10 March 2025 .	
Maintain parameter 241 with the group e-mail address to ensure that your error messages are being received at the LOGIK Contact Center.	
Clear all errors as per FYE-mail before the financial year-end. (See Annexure D for Solutions).	
BANK ADJUSTMENT ACC: DOM must only contain erroneous bank transactions.	
Ensure that all the Unpaid /Recalls have been cleared prior to closure.	



6. The following process should be followed for Financial Year End closure:

- ☐ Departments that are ready to close the financial year may do so any date before the Force Closure date;
- ☐ It is no longer necessary for Departments to log a request for BAS Business Support Team to have the Period Opening & Closing (POC) client bound to the department's database. All departments will be bound before the proposed closure date, and they can close when they are ready;
- ☐ It will no longer be necessary for departments to log a second request on the day of the financial year end closure indicating the time they are ready to close their financial year;
- ☐ A request can be logged if departments require assistance with the financial year end closure;
- ☐ The Departments that do not manage to close before **17h00 on 29 April 2025** will be force closed;
- ☐ Once the financial year end Trial Balances (**totals on Fund 2, Item 2, Item 3, Item 6 and Item 9**) has been requested, there is no need to provide the request & user ids to the Business Support Team. Departments are responsible for requesting relevant Trial Balances that they will use a day after the financial year end closure to ensure the year-end transactions posted correctly;
- ☐ It will no longer be necessary to bring all users down after a department has closed its financial year;
- ☐ Departments will no longer be required to send the sign off documents to the BAS LOGIK Contact Centre.

7. Final Audit

- ☐ Once the Auditor's report has been received and all adjustment journals (if applicable) have been captured, the Period Opening and Closing functionality in BAS must be used to finally close (audit closure) the financial year.
- ☐ **Please note that the Department will not be able to close the financial year 2024/2025 if the previous financial year, 2023/2024, has not been final audit closed.**

NB: - After the final closure, no further adjustment journals will be allowed.

- Departments must ensure that the Annual Financial Statement reconcile with the relevant account balances as per the BAS Trial Balance and other relevant reports.

8. The Departments must inform LOGIK Contact Centre of the proposed closure **dates by 10 March 2025**, as it will allow sufficient time to verify and assist departments that experience problems before and during final closure.

Your co-operation in this regard will be appreciated.

NOKULUNGA MAGWEVANA

DIRECTOR: OPERATIONS AND IMPLEMENTATION

DATE:



ANNEXURE A

ACCOUNTS THAT MUST/ PREFERABLY HAVE A ZERO BALANCE AT FINANCIAL YEAR-END

Item (Description of Account)	Segment Detail Number	Period End Balance not Allowed	Must have a zero balance at year end	Preferably have a zero balance at year end
ALLOC INVALID CAN BEFORE DIST:CL	1940992	Y	X	
BANK EXCEPTION ACC:DOM	1715992	Y	X	
BAS CREDIT TRANSFERS:DOM	1720992	N		X
BAS EBT CONTROL:DOM	1718992	N		X
CANCEL CHEQUE/RE-ISSUE(PERS)	1739992	N		X
CONV:BANK ACCOUNT:CL	1957992	Y	X	
CONV:BANK ADJUSTMENT ACC:DOM	1958992	Y	X	
CONV:BAS CREDIT TRANSFERS:DOM	1959992	Y	X	
CONV:BAS EBT CONTROL:CL	1960992	Y	X	
CONV:CAN CHEQUE/RE-ISSUE:PERS:CL	3726992	Y	X	
CONV:CHEQUES PAYABLE:CL	1961992	Y	X	
CONV:CONTROL ACCOUNT:CL	1962992	Y	X	
CONV:DEBT:CL	1963992	Y	X	
CONV:DEPOSIT ACCOUNT:CL	1964992	Y	X	
CONV:EBT REJECTION ACC:CL	1965992	Y	X	
CONV:EXCEPTION ACCOUNT:CL	1966992	Y	X	
CONV:EXCHEQUER GRANT ACC:CL	3727992	Y	X	
CONV:EXPENDITURE:CL	1946992	Y	X	
CONV:GENERAL ACC OF FUND/VOTE:CL	3728992	Y	X	
CONV:GRV DISCOUNT VARIANCE:CL	1947992	Y	X	
CONV:GRV OVERPAID VARIANCE:CL	3729992	Y	X	
CONV:GRV SUSPENSE:CL	3730992	Y	X	
CONV:M/F DIFFERENCE-ONE:CL	1948992	Y	X	
CONV:M/F DIFFERENCE-THREE:CL	3731992	Y	X	
CONV:M/F DIFFERENCE-TWO:CL	1967992	Y	X	
CONV:NO MATCHING FIELD:CL	3732992	Y	X	
CONV:OUTSTANDING PAYMENTS:CL	1949992	Y	X	
CONV:RECEIPT CONTROL:CL	1950992	Y	X	
CONV:RECEIPT DEPOSIT CONTROL:CL	1951992	Y	X	
CONV:RECEIPT EXCEPTIONS:CL	1952992	Y	X	
CONV:RECEIPT PENDING CONTROL:CL	1968992	Y	X	
CONV:REVENUE ACCRUAL ACC:CL	3733992	Y	X	
CONV:REVENUE:CL	1953992	Y	X	
CONV:TEL ERRONEOU INTERF ACC:C	1954992	Y	X	
CONV:TELEPHONE EXCEPTION ACC:CL	1955992	Y	X	
CONV:UNP/RC BAS EBT CNTR ACC	1956992	Y	X	



Item (Description of Account)	Segment Detail Number	Period End Balance not Allowed	Must have a zero balance at year end	Preferably have a zero balance at year end
CONV:UNPAID CHEQUE/RE-ISSUE:CL	3734992	Y	X	
CREDIT NOTE CANCELLATION:DOM	1735992	N		X
DEBIT ORDER CONTROL ACCOUNT:CL	1928992	N		X
DEBIT ORDER EXCEPTION ACCOUNT:CL	1930992	N		X
DEBIT ORDER TRANSFER ACC	1725992	N		X
DEBT RECEIPT CONTROL:CA	1785992	Y	X	
DEBT SUSPENSE:CA	1788992	Y	X	
DEBT TRANSFER:CA	1789992	Y	X	
DISALL DISHONoured CHEQUES:CA	1773992	N		X
DISALLOWANCE MISCELLANEOUS:CA	3736992	N		X
EBT REJECTION ACC:DOM	1736992	N		X
FUND REQUISITION ACCOUNT:DOM	1729992	N		X
GRV DISCOUNT VARIANCE:CL	1941992	Y	X	
GRV OVERPAID VARIANCE:CL	1942992	Y	X	
GRV SUSPENSE:CL	1943992	Y	X	
INTER RESPONS CLEARING ACC:CL	1931992	Y	X	
PERSAL CREDIT TRANSFER:DOM	1721992	N		X
PMG SCHEDULES:DOM	1724992	N		X
PRIVATE TELEPHONE:CA	1775992	N		X
RECEIPT CONTROL ACCOUNT:DOM	1732992	N		X
RECEIPT DEPOSIT CONTROL:DOM	1733992	N		X
RECEIPT EXCEPTIONS:DOM	1734992	Y	X	
RECEIPT PENDING CONTROL:DOM	1730992	Y	X	
REVENUE ACCRUAL ACCOUNT:CL	1994992	Y	X	
SAL:DISALLOWANCE ACCOUNT:CA	1779992	N		X
SAL:DUPLICATE EMPLOYEE CHEQUE:CA	2016992	Y	X	
SAL:PERSAL EBT CONTROL ACC:DOM	1719992	N		X
SAL:PERSAL INTERFACE CONTROL:CL	1920992	Y	X	
SAL:PERSAL TRANSFER CONTROL:CL	1921992	Y	X	
SAL:REVERSAL CONTROL:CA	1780992	N		X
TELEPHONE CONTROL ACC:CL	1924992	N		X
TELEPHONE ERRONEOU INTERF ACC:CL	1922992	N		X
TELEPHONE EXCEPTION ACC:CL	1923992	Y	X	
THIRD PARTY TRANSPORT CONTR ACC	1728992	N		X
TRANSPORT PAYMENT SUSPENSE:CL	1925992	N		X
UNALLOCATED CANCEL RECEIPTS:DOM	1731992	Y	X	
UNP/RC BAS EBT CNTR ACC:DOM	1737992	N		X



national treasury

Department:
National Treasury
REPUBLIC OF SOUTH AFRICA

5 of 11

Private Bag X115, Pretoria, 0001 • 40 Church Square, PRETORIA, 0002 • Tel: +27 12 315 5111, Fax: +27 12 406 9055 • www.treasury.gov.za

ANNEXURE B

Donor, Trading, Trust Funds, Cara, Direct Exchequer

Example of year-end mappings

T/TYPE DESCRIPTION	T/TYPE	IND	FUND	ITEM	IND	INFRA- STRUCTURE	FUND	RESP	OBJECTIVE	PROJECT	ITEM	ASSETS	REGION IDENTIFIER
TOTAL AMOUNT OF VOTE FUND	PO001	DR	GEN ACC OF THE DEPT VOTE	GEN ACC OF FUND/VOTE	CR	GEN ACC OF VOTE	GEN ACC OF THE DONOR EXP	CONTROL RESP	ASSETS & LIABILITIES	NO PRJ:STND/A GEN ACC OF DONOR EXP	EXCHEQUER GRANT ACC CL	NON- ASSETS RELATED	NON EXP:NO REGIONAL IDENTIFIER
TOTAL AMOUNT OF VOTE FUND	PO001	DR	GEN ACC OF THE DONOR FUND	GEN ACC OF FUND/VOTE	CR	GEN ACC DONOR EXP	GEN ACC OF THE DONOR EXP	CONTROL RESP	ASSETS & LIABILITIES	NO PRJ:STND/A GEN ACC OF DONOR EXP	EXCHEQUER GRANT ACC CL	NON- ASSETS RELATED	NON EXP:NO REGIONAL IDENTIFIER
TOTAL AMOUNT OF VOTE FUND	PO001	DR	GEN ACC OF THE TRADING FUND	GEN ACC OF FUND/VOTE	CR	GEN ACC TRADE EXP	GEN ACC OF THE TRADING FUND/EX P	CONTROL RESP	ASSETS & LIABILITIES	NO PRJ:STND/A GEN ACC TRADE EXP	EXCHEQUER GRANT ACC CL	NON- ASSETS RELATED	NON EXP:NO REGIONAL IDENTIFIER
TOTAL AMOUNT OF VOTE FUND	PO001	DR	GEN ACC OF THE TRUST FUND	GEN ACC OF FUND/VOTE	CR	GEN ACC TRUST EXP	GEN ACC OF THE TRUST FUND	CONTROL RESP.	ASSETS & LIABILITIES	NO PRJ:STND/A GEN ACC TRUST EXP	EXCHEQUER GRANT ACC CL	NON- ASSETS RELATED	NON EXP:NO REGIONAL IDENTIFIER
TOTAL AMOUNT OF VOTE FUND	PO001	DR	GEN ACC OF CARA EXPENDITURE	GEN ACC OF FUND/VOTE	CR	GEN ACC CARA EXP	GEN ACC OF CARA EXP	CONTROL RESP.	ASSETS & LIABILITIES	NO PRJ:STND/A GEN ACC CARA EXP	EXCHEQUER GRANT ACC CL	NON- ASSETS RELATED	NON EXP:NO REGIONAL IDENTIFIER
TOTAL AMOUNT OF EXP INCURRED	PO002	CR	VOTED FUNDS EXPENDITURE		DR	GEN ACC OF VOTE	GEN ACC OF THE DONOR FUND	CONTROL RESP.	ASSETS & LIABILITIES	NO PRJ:STND/A GEN ACC OF DONOR EXP	EXCHEQUER GRANT ACC CL	NON- ASSETS RELATED	NON EXP:NO REGIONAL IDENTIFIER
TOTAL AMOUNT OF EXP INCURRED	PO002	CR	DONOR FUND EXPENDITURE		DR	GEN ACC DONOR EXP	GEN ACC OF THE DONOR FUND	CONTROL RESP.	ASSETS & LIABILITIES	NO PRJ:STND/A GEN ACC OF DONOR EXP	EXCHEQUER GRANT ACC CL	NON- ASSETS RELATED	NON EXP:NO REGIONAL IDENTIFIER



T/TYPE DESCRIPTION	T/TYPE	IND	FUND	ITEM	IND	INFRA- STRUCTURE	FUND	RESP	OBJECTIVE	PROJECT	ITEM	ASSETS	REGION IDENTIFIER
TOTAL AMOUNT OF EXP INCURRED	PO002	CR	TRADING FUND EXPENDITURE		DR	GEN ACC TRADE EXP	GEN ACC OF THE TRADING FUND	CONTROL RESP.	ASSETS & LIABILITIES	NO PRJ:STND/A GEN ACC TRADE EXP	EXCHEQUER GRANT ACC CL	NON- ASSETS RELATED	NON EXP:NO REGIONAL IDENTIFIER
TOTAL AMOUNT OF EXP INCURRED	PO002	CR	TRUST FUND EXPENDITURE		DR	GEN ACC TRUST EXP	GEN ACC OF THE TRUST FUND	CONTROL . RESP.	ASSETS & LIABILITIES	NO PRJ:STND/A GEN ACC TRUST EXP	EXCHEQUER GRANT ACC CL	NON- ASSETS RELATED	NON EXP:NO REGIONAL IDENTIFIER
TOTAL AMOUNT OF EXP INCURRED	PO002	CR	CARA FUNDS EXP		DR	GEN ACC CARA EXP	GEN ACC OF CARA EXPENDIT URE	CONTROL . RESP.	ASSETS & LIABILITIES	NO PRJ:STND/A GEN ACC CARA EXP	EXCHEQUER GRANT ACC CL	NON- ASSETS RELATED	NON EXP:NO REGIONAL IDENTIFIER
CREDIT BALANCE OF REVENUE	PO003	DR	TRADING REVENUE		CR	GEN ACC TRADE REC	GEN ACC OF THE TRADING REVENUE	CONTROL . RESP.	ASSETS & LIABILITIES	NO PRJ:STND/A GEN ACC OF TRADE REV	REVENUE ACCRUAL ACC CL	NON- ASSETS RELATED	NON EXP:NO REGIONAL IDENTIFIER
CREDIT BALANCE OF REVENUE	PO003	DR	TRUST REVENUE		CR	GEN ACC TRUST REC	GEN ACC OF THE TRUST REVENUE	CONTROL . RESP.	ASSETS & LIABILITIES	NO PRJ:STND/A GEN ACC TRUST REV	REVENUE ACCRUAL ACC CL	NON- ASSETS RELATED	NON EXP:NO REGIONAL IDENTIFIER
DR BAL GEN ACC OF REVENUE	PO005	CR	GEN ACC OF THE TRADING REVENUE	GEN ACC OF REVENUE	DR	GEN ACC TRADE REC	GEN ACC OF THE TRADING REVENUE	CONTROL . RESP.	ASSETS & LIABILITIES	NO PRJ:STND/A GEN ACC OF TRADE REV	REVENUE ACCRUAL ACC CL	NON- ASSETS RELATED	NON EXP:NO REGIONAL IDENTIFIER
DR BAL GEN ACC OF REVENUE	PO005	CR	GEN ACC OF THE TRUST REVENUE	GEN ACC OF REVENUE	DR	GEN ACC TRUST REC	GEN ACC OF THE TRUST REVENUE	CONTROL . RESP.	ASSETS & LIABILITIES	NO PRJ:STND/A GEN ACC TRUST REV	REVENUE ACCRUAL ACC CL	NON- ASSETS RELATED	NON EXP:NO REGIONAL IDENTIFIER
DR BAL GEN ACC OF REVENUE	PO005	CR	GEN ACC OF THE DIR EXCHEQUER REV	GEN ACC OF REVENUE	DR	GEN ACC OF REC	GEN ACC OF THE DIR EXCHEQU ER REV	CONTROL . RESP.	ASSETS & LIABILITIES	NO PRJ:STND/A GEN ACC DIR EXCH REV	REVENUE ACCRUAL ACC CL	NON- ASSETS RELATED	NON EXP:NO REGIONAL IDENTIFIER



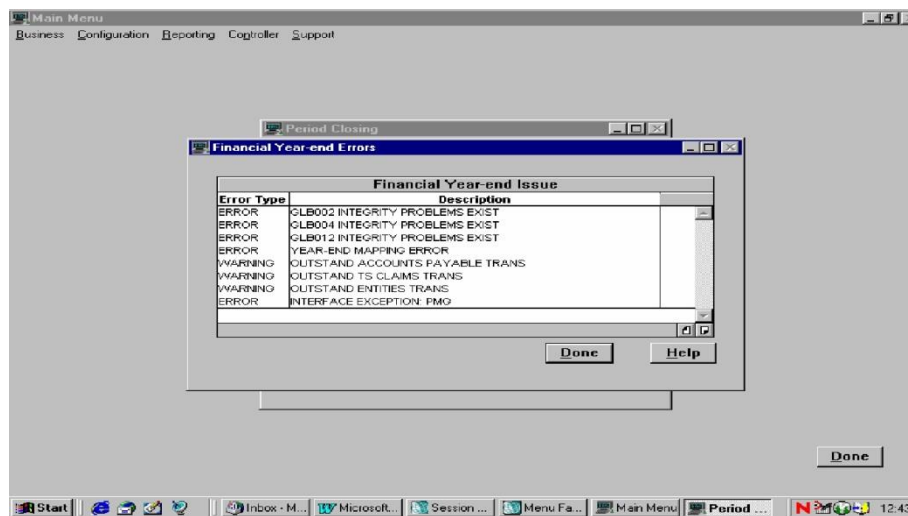
ANNEXURE C

Private Bag X115, Pretoria, 0001 • 40 Church Square, PRETORIA, 0002 • Tel: +27 12 315 5111, Fax: +27 12 406 9055 • www.treasury.gov.za

Financial Year-End Errors

Financial year-end Errors window:

The type can be an Error or a Warning. The users will however be able to close the financial year when the error type contains only warnings. The errors are critical and should be fixed to ensure a successful closure, but the warnings are for the user's attention, and they must decide if the warnings will be dealt with before continuing with closure. The batch, that encountered the error, must be rerun when the users resolved the errors.



FIELD/BUTTON	DESCRIPTION
Error Type	This indicates the severity of the error. Warnings will not prevent users to close the financial year but all the Error type issues will.
Description	Meaningful description of the issue encountered which will indicate to the user where the problem is.
<Done>	Clicking <Done> will close the Financial year-end errors window and return to the Period Closing window.

Attached as **Annexure D** is a list that provides explanations of the various errors/warnings that can be encountered together with a possible solution of solving the problem and the relevant e-mail message that will be sent.



national treasury

Department:
National Treasury
REPUBLIC OF SOUTH AFRICA

8 of 11

Private Bag X115, Pretoria, 0001 • 40 Church Square, PRETORIA, 0002 • Tel: +27 12 315 5111, Fax: +27 12 406 9055 • www.treasury.gov.za

ANNEXURE D

FYE ERROR SOLUTIONS

	DESCRIPTION TO BE DISPLAYED	E-MAIL MESSAGE	TYPE	SOLUTION
1	Period End Balances exist	Found Accounts with balances where balance should be zero	Error	Accounts not allowed to have a balance currently have a non-zero balance. Accounts with a Period end balance indicator of 'Y' should have a zero-balance when closing. Request Matching/ Detail report to investigate and resolve.
2	Accounting types problem	Found Item accounting types with spaces on posting levels	Error	Expense, Income and Ledger item accounts do not have the correct accounting type. (Note: Will be eliminated with GFS).
3	Open-Close Parameter error	There are Period Open-Close parameters that were not captured	Error	Year-end parameters are missing / incorrect. Ensure that Period Open and Close parameters were captured correctly. This will include system parameters, definition codes 16 (transaction types) and 184 (Financial year-end). Departmental parameters 185 (year-end segment type mappings from) and 186 (year-end segment type mappings to).
4	Year-end Mapping error	Missing mappings in YRENDMAP table. Further validations for mappings stopped.	Error	This error indicates that some mappings are still outstanding. This can be e.g. a PO001 or PO003 missing for a PO002 mapping. The particulars can be obtained from User support team since it is currently written to an output file. Remember a call must be logged before User support can provide the information. Only captured mappings will be validated.
5	Matching field balance error	Found matching fields that are not in sync	Error	Item transactions exist without matching fields. A call must be logged before User support can provide further information.
6	Outstand General Journal Trans	Warning: Found outstanding General Journal transactions	Warning	Journal transactions still to be processed exist.
7	Outstand Accounts Payable Trans	Warning: Found outstanding Payment transactions	Warning	Accounts Payable payments captured that still need to be processed for current financial year.
8	Outstand Disbursement Trans	Warning: Found outstanding Disbursement transactions	Warning	Some disbursements still need to be processed for the current year. Ensure that all rejected disbursements have been resolved either cancelled or reissued. Reissued disbursements must first be processed by the relevant batch before completed.
9	Outstand Receipts Trans	Warning: Found outstanding Receipt transactions	Error	Pending receipts may still exist.
10	Outstand Batch/Rec Deposit Trans	Warning: Found outstanding Batch\Receipt batch transactions	Error	Batches exist for which a deposit confirmation is still outstanding.

11	Outstand Deposit Trans	Warning: Found outstanding Deposit transactions	Error	Deposits exist for which a deposit confirmation is still outstanding.
12	Outstand T&S Advances Trans	Warning: Found outstanding T&S	Warning	Advances exist that still need to be processed for the current financial year. Advances transactions
13	Outstand T&S Claims Trans	Warning: Found outstanding T&S Claims transactions	Warning	Claims exist that still need to be processed for the current financial year.
14	Outstand T&S Matches Trans	Warning: Found outstanding T&S	Warning	Matches exist that still need to be processed for the current financial year.
15	Outstand Debt Agreement Trans	Warning: Found outstanding Debt Agreement transactions	Warning	Debt agreement transactions still exist that must be finalised. Debts that were captured or rejected and not yet authorised.
16	Outstand Debt Trans	Warning: Found outstanding Debt transactions	Warning	Captured or rejected debt transactions still to be authorised.
17	Outstand Entities Trans	Warning: Found outstanding Entities transactions	Warning	Entities captured that must be authorised or processed.
18	Interface Exception: PERSAL	Interface Error: Persal Exception count: 40	Error	Resolve exceptions outstanding
19	Interface Exception: ACB	Interface Error: ACB Payments Exception count: 2	Warning	Resolve exceptions outstanding.
20	Interface Exception: ACBEF7	Interface Error: Recall and Unpaid Payments Exception count: 43	Warning	Resolve exceptions outstanding.
21	Interface Exception: JOURNAL	E.G. Interface Error: GEIS Journals Exception count: 20	Error	Resolve exceptions outstanding.
22	Interface Exception: PAYMENT	E.g. Interface Error: Finest Payments Exception count: 1808	Error	Resolve exceptions outstanding. The type of payment will be displayed in the e-mail message with an exception count.
23	Interface Exception: PMG	E.g. Interface Error: Pay Master General Exception count: 40	Error	Resolve exceptions outstanding.
24	Interface Exception: TELKOM	Interface Error: Telkom Exception count: 90	Error	Resolve exceptions outstanding.
25	Interface Exception: OTHER		Warning	This will involve exceptions not catered for in the other interface types. (This will only be used if a new interface type was introduced, and no code changes have been performed to include the new interface type).
26	Interface Exception: RECEIPT		Error	Resolve exceptions outstanding.



27	Account Type Error: EXPENSE	Found Account type error for Expense Accounts	Error	Ensure that all expense items contain the correct account type of 'E'. User Support would be able to provide the relevant item numbers.
28	Account Type Error: REVENUE	Found Account type error for Revenue Accounts	Error	Ensure that all expense items contain the correct account type of 'I'. User Support would be able to provide the relevant item numbers.
29	Account Type Error: LEDGER	Found Account type error for Ledger Accounts	Error	Ensure that all expense items contain the correct account type of 'L'/'A'. User Support would be able to provide the relevant item numbers.
30	Susp/Mfldind error: EXPENSE	Warning: Found incorrect Suspense/Matching field IND for expense accounts.	Warning	Incorrect Suspense & Matching field indicators. Ensure that for the specific account type these indicators correspond.
31	Susp/Mfldind error: REVENUE	Warning: Found incorrect Suspense/Matching field IND for revenue accounts.	Warning	Incorrect Suspense & Matching field indicators.
32	Susp/Mfldind error: LEDGER	Warning: Found incorrect Suspense/Matching field IND for ledger accounts.	Warning	Incorrect Suspense & Matching field indicators.
The following mail are not specifically linked to the error parameters; therefore, these messages will not be displayed on the on-line client:				
Code Structure:				
33		Parameters for code structure accounts not found.		The code structure account values were not found in the Parcdevl table for Defnocde 238. No further validations are performed for the code structure.
34		Varsno parameter for code structure parent level not found.		The parent level definition was not found in the Parvardf table for Defno 238. No further validations are performed for the code structure.
35		Varsno parameter for code structure account type not found.		The account type definition was not found in the Parvardf table for Defno 238. No further validations are performed for the code structure.
36		Expenditure: SDNO 1055 invalid! <i>NOTE: The Account name and SDNO will change, depending on which account was not found.</i>		The parent account SDNO value was captured incorrectly for Defno 238.
37		Parent SDNO for Seqno 2, Varsno 1 not found. NOTE: the Seqno will change, depending on which SDNO was not found.		The parent account SDNO value was not found for Defno 238.
38		Account type value parameter for EXPENDITURE not found. <i>NOTE: the account name will change, depending on which account was not found.</i>		The account type for the parent account was not found for Defno 238.



national treasury

Department:
National Treasury
REPUBLIC OF SOUTH AFRICA

Mappings:				
39		Mapping error: Missing PO002/PO005 mapping for PO003.		There are PO003 Items in the YRENDMAP table that does not have a mapping for PO002 or PO005.
40		Mapping error: Missing PO002 mapping for PO001.		There are PO001 Items in the YRENDMAP table that does not have a mapping for PO002.
41		Mapping error: Missing PO003 mapping for PO005.		There are PO005 Items in the YRENDMAP table that does not have a mapping for PO003.
42		Mapping error: Missing PO001/PO003 mapping for PO002.		There are PO002 Items in the YRENDMAP table that does not have a mapping for PO001 or PO003.
43		Mapping error: Fund(s) without mappings for expenses (PO002).		There is expense Items in the YRENDMAP table that does not have mappings for Fund.
44		Mapping error: Fund(s) without mappings for income (PO003).		There is income Items in the YRENDMAP table that does not have mappings for Fund.