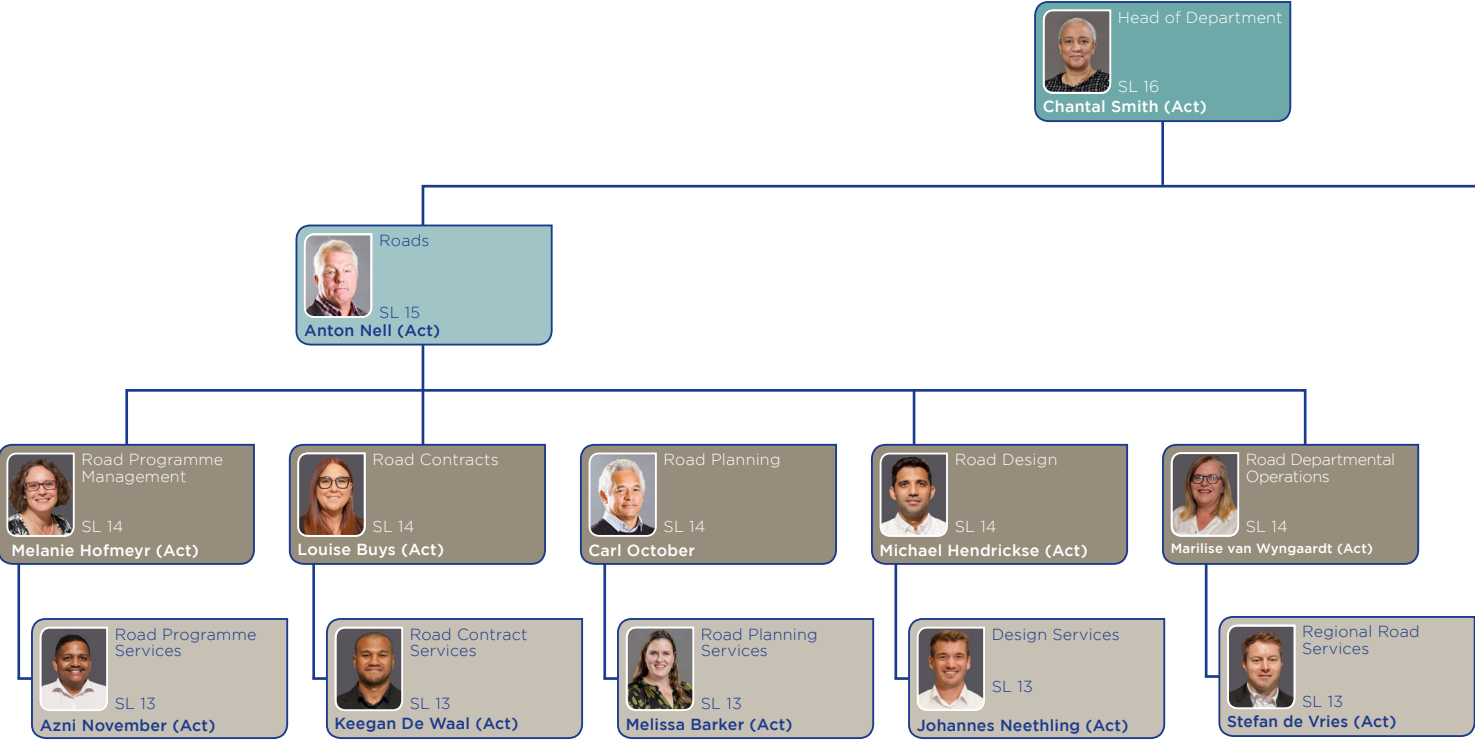


# Organisational Organogram

Extended Top Management continued



Human Settlements  
SL 15  
**Labeeqa Schuurman**

Human Settlement Planning  
SL 14  
**Kahmiela August**

Human Settlement Implementation  
SL 14  
**Vacant**

Public Information and Stakeholder Relations  
SL 13  
**Nathan Adriaanse**

Planning  
SL 13  
**Vacant**

Grant and Municipal Performance Management  
SL 13  
**Rob Smith**

Affordable Housing  
SL 13  
**Gavin Wiseman**

Professional and Project Management Services  
SL 13  
**Vacant**

Land and Asset Management  
SL 13  
**Roy Stewart**

Human Settlement Project Administration  
SL 13  
**Brian Denton**

Regional Human Settlement Support Region 3 West Coast  
SL 13  
**Rehana Tiry**

Regional Support Garden Route and Central Karoo  
SL 13  
**Vacant**

Provincial Public Works  
SL 15  
**Andrea Campbell (Act)**

Economic Hub  
SL 14  
**Lindelwa Mabuntane (Act)**

Immovable Asset Management  
SL 14  
**Brett Blackburn**

General Infrastructure  
SL 14  
**Catherine Skillicorn (Act)**

Education Infrastructure  
SL 14  
**René Kok (Act)**

Health Infrastructure  
SL 14  
**René Kok**

Economic Development Hub  
SL 13  
**Neil Joseph**

Property Planning and Information  
SL 13  
**Ansa Ferreira**

Technical Services  
SL 13  
**Refiloe Monare**

Infrastructure Policies, Strategies and Systems: Education  
SL 13  
**Tanya Potgieter**

Infrastructure, Policies, Strategies and Systems: Health  
SL 13  
**Jodie Thomas**

Economic Development Hub  
SL 13  
**Vacant**

Property Management Region 1  
SL 13  
**Vacant**

Programme/Projects Infrastructure Delivery: General  
SL 13  
**Catherine Skillicorn**

Programme/Projects Infrastructure Delivery: Education  
SL 13  
**Daniel Nugent**

Programme/Project Infrastructure Delivery: Health  
SL 13  
**Etienne Du Plooy**

Economic Development Hub  
SL 13  
**Vacant**

Property Management Region 2  
SL 13  
**Pakama Mlandu**

Special Programmes  
SL 13  
**Lindelwa Mabuntane**

Property Acquisition  
SL 13  
**Elzette van der Westhuizen**

# Organisational Organogram

## Extended Top Management continued

