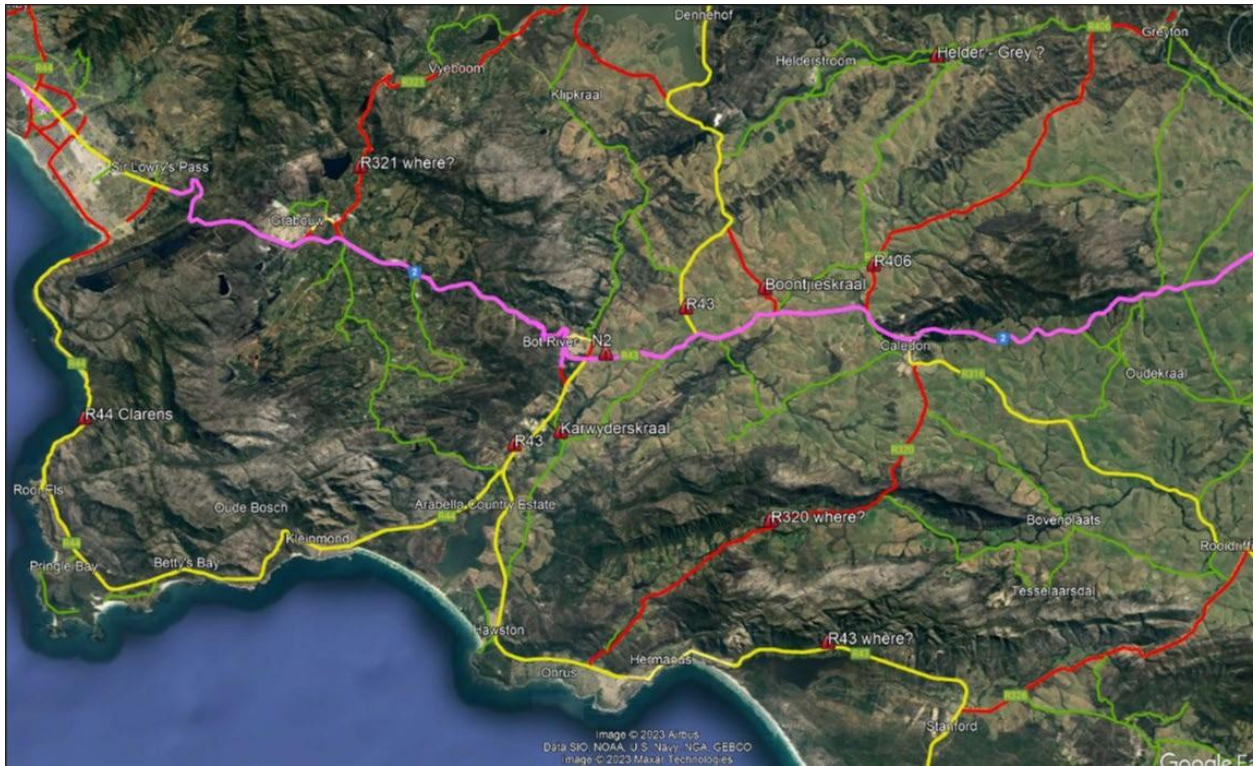


DOI Roads report 25/9/2023 @12h00

Roads closed

ODM

- DR1252 Caledon teslarsdal DR1257 Teslarsdal to Hermanus. MR267 Only access that Teslarsdal has.
- Closing TR30/2 between Villiersdorp and Worcester now. Flooding over road
- TR30/1 from N2 Caledon to Villoerdorp closed. Severe erosion damage
- MR191 Franschoek to Villiersdorp closed
- Low water bridge across the Buffelsjag river close to Swellendam
- Low water bridge in Slanghoek are closed (DR1398)
- **TR30/1 road between N2 and Villiersdorp (Dennehof Golf Course) mud and water across road. TR30/1 k30-31 road closed villiersdorp to N2 closed**
- **TR28/1 Road between Bot rivier and Arabell closed Trees and mud on road. (Team working there) Open**
- MR279 Road between Grabouw and Villiersorp closed sand on road.
- Nag wag Bridge flooding first 5km between Bredasdorp and Arniston, closed water over road (TR29/2)
- MR277 Caledon to Greyton water across the road in two places
- DR1254 Karwyderskraal near Botriver, tree and debris on road (next inline)
- Swartvlei pad alternative route also closed
- **Arniston is completely cut off All gravel roads not advised, no through way via Prinskraal De Mond reserve also cut off**
- TR28/2 Hermans Standford water over topping road
- George to Cape Town diverted at Swellendam all road in that area are dangers.
- Genadendal area gravel roads closed Greyton to Storm river DR1303(Greyton and riviersonder end) Dr1298 (Caledon to Genadedal) DR1313 & DR1311(Helderstroom and between Greyton and Rivier sonder ent)
- MR264 Bredasdorp Swellendam closed both sides
- **MR261 Bredasdorp Struisbaai**
- **MR262 Bredasdorp elim(Elim cut of at the moment,gravel roads bad)**
- **MR1205 Struisbaai also cut of**



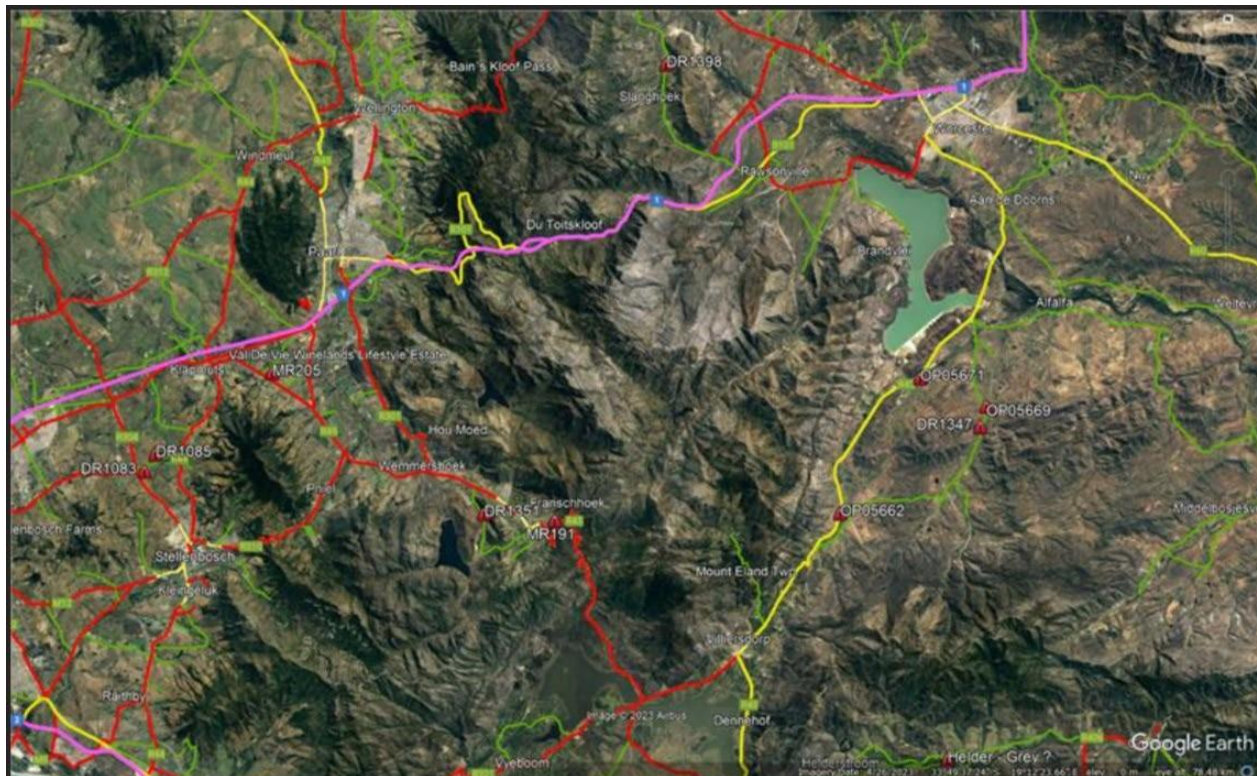
West Coast

- DR2161 (Versvel pas) between Piketberg and Piket-bo-berg tree blocking traffic team in route, closed
- DR1161 Morreesburg Gouda road, Tree over road, team enroute

CWDM

- DR01398 Slanghoek, water overtopping road surface
- DR01347 Doringrivier, water overtopping road surface
- OP05671 Moddergat, water overtopping road surface
- OP05669 Lemoenpoort, water overtopping road surface
- OP05662 De Hoek. water overtopping road surface
- **DR01085 Kromme Rhee, Trees on road (Teams enroute)**
- DR01083 Elsenberg, Trees on road
- **MR205 Klapmuts Simondium. Trees on road (Open)**
- MR191 Franshoek pass Trees across road.
- DR1351 Robertsvlei, water on road.
- DR1400 Nuy Km 6.70 Road closed water overtoppig
- DR5719 Knetvlei in De Doorns close water overtopping road
- DR1489 Modderdrif de Doorns closed

- DR1353 Konings river km 7.80 water overtopping road



SANRAL problems

- N2 Botrivier completely washed away.

CoCT traffic noted

- St Louries pass
- Hemel and Aarde road
- Hermanus Stanford road
- R44 rock fall Rooi else road closed

Roads with teams on

- Bainskloof Branches blocking stormwater outlets, team busy removing and clearing drainage on route.

Teams on standby

- Meiringspoort teams on standby for possible closure due to flooding

GRDM

Rain but no damage

CKDM

Rain but no damage