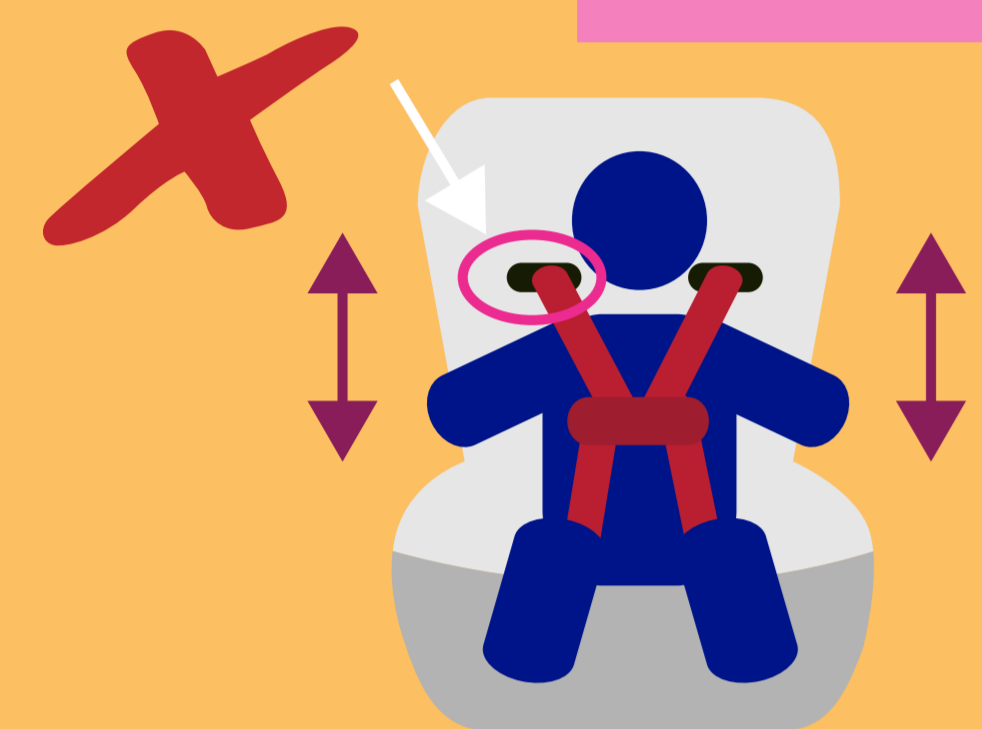
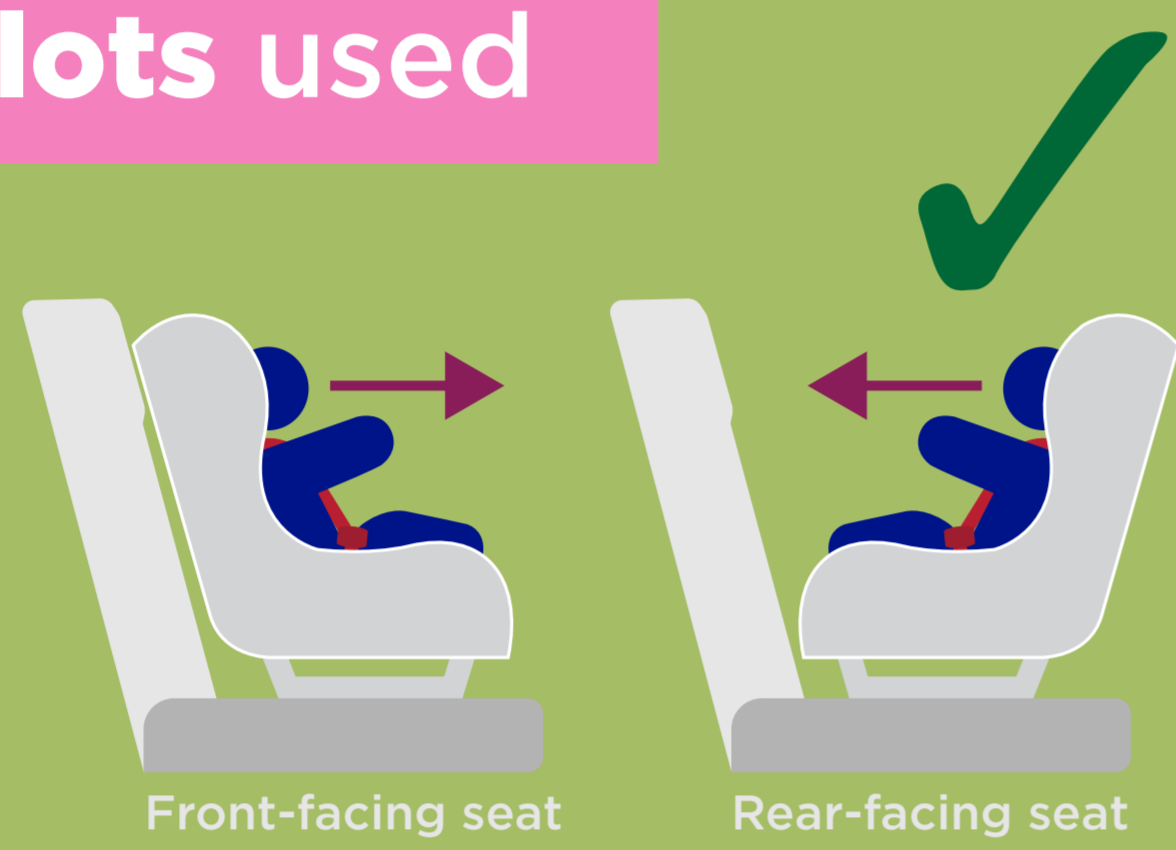


Child car seat safety

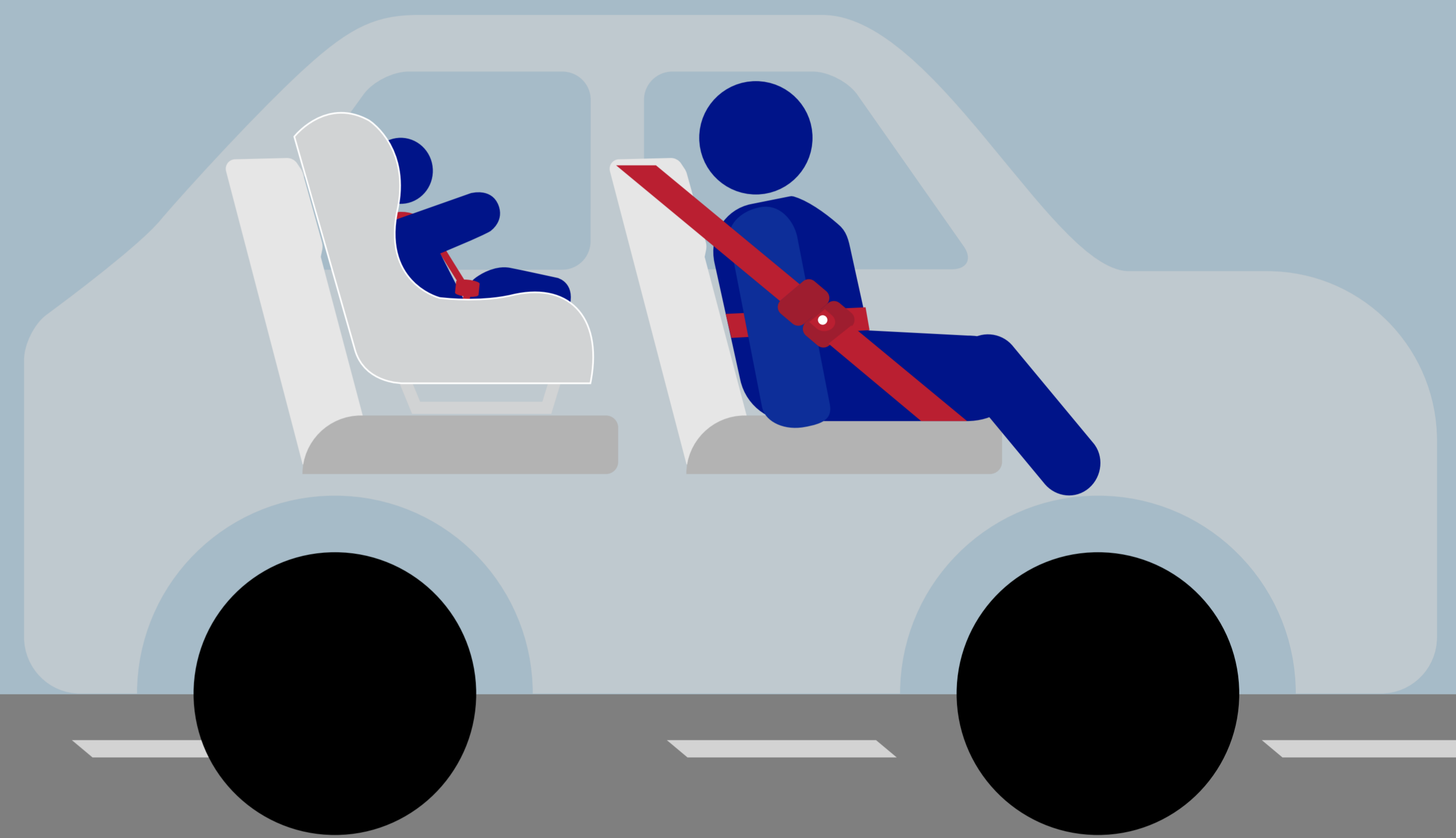
Harness slots used



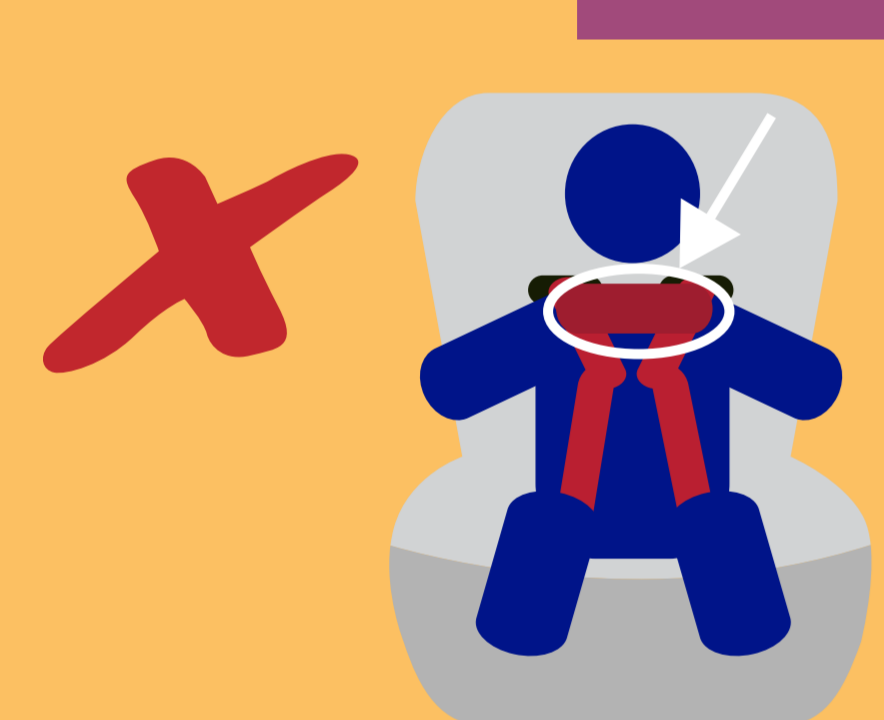
The harness slots are positioned either too high or too low from the child's shoulders.



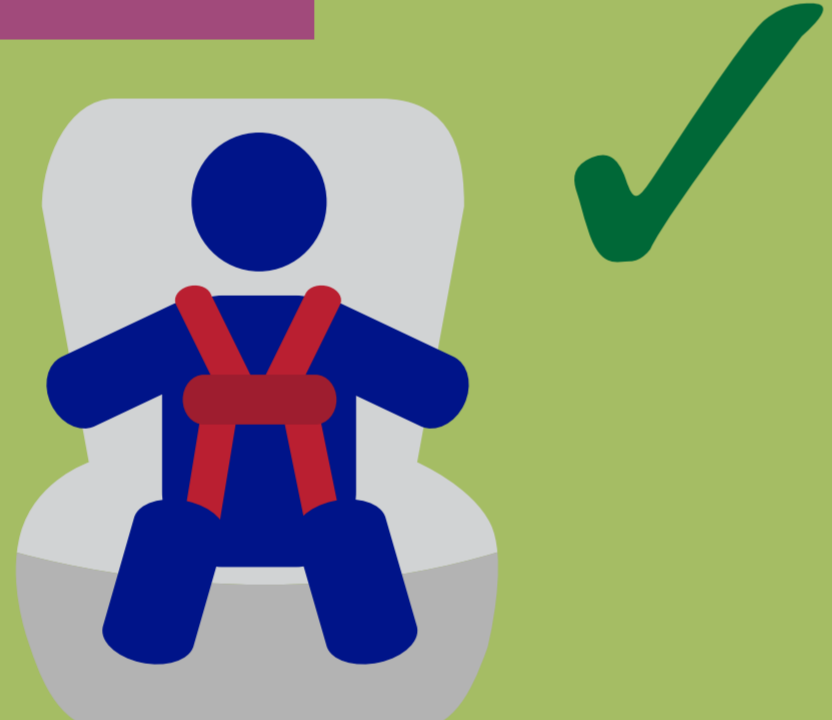
For **front-facing seats**, harness slots need to be **at or above the child's shoulders**.
For **rear-facing seats**, use harness slots **positioned at or below the child's shoulders**.



Chest clip position

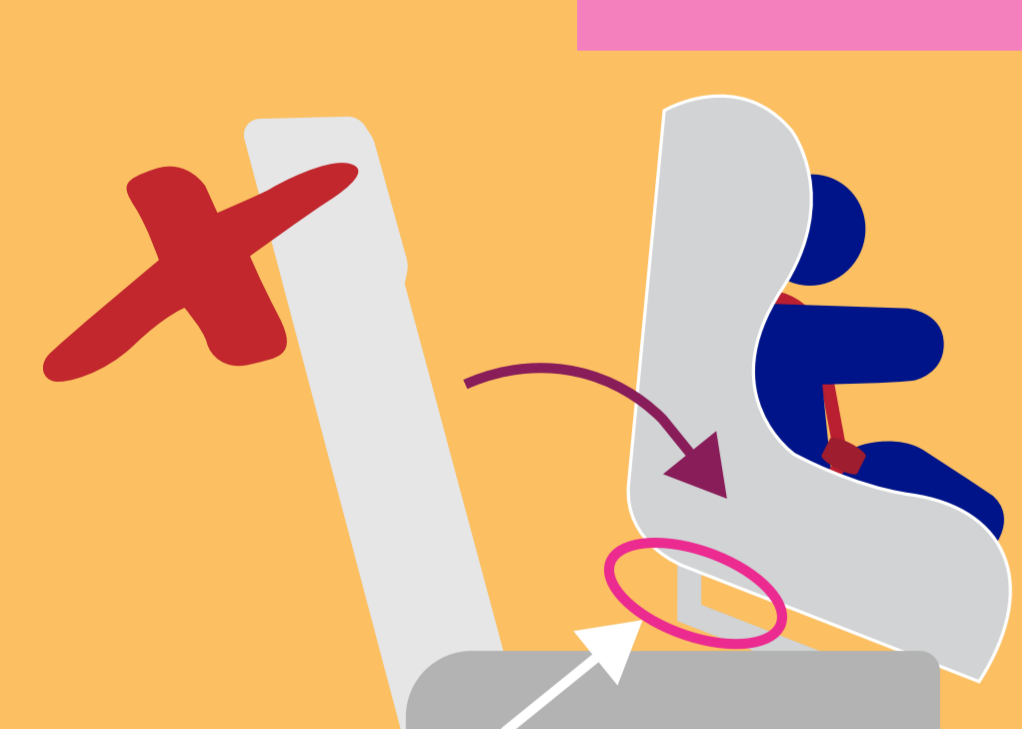


Chest clips should never be positioned above the **child's shoulders**.



The **correct position** for the chest clip is at **armpit level**.

Car seat installation



If the **safety seat is too loose** and **not securely fastened**, it will shift.



A **securely fastened car seat** will **not move** around.

Harness strap



If there is **slack** when you **pinch the harness strap** at the **child's shoulders**, the strap is **too loose**.



There should be **no slack** when you pinch the strap at the **child's shoulders**.

Improper seatbelt placement



The **lap belt** should lie snugly across the **upper thighs**, and **not the stomach**. The **shoulder belt** should lie snugly across the **shoulder and chest**, and **not the neck or face**.

