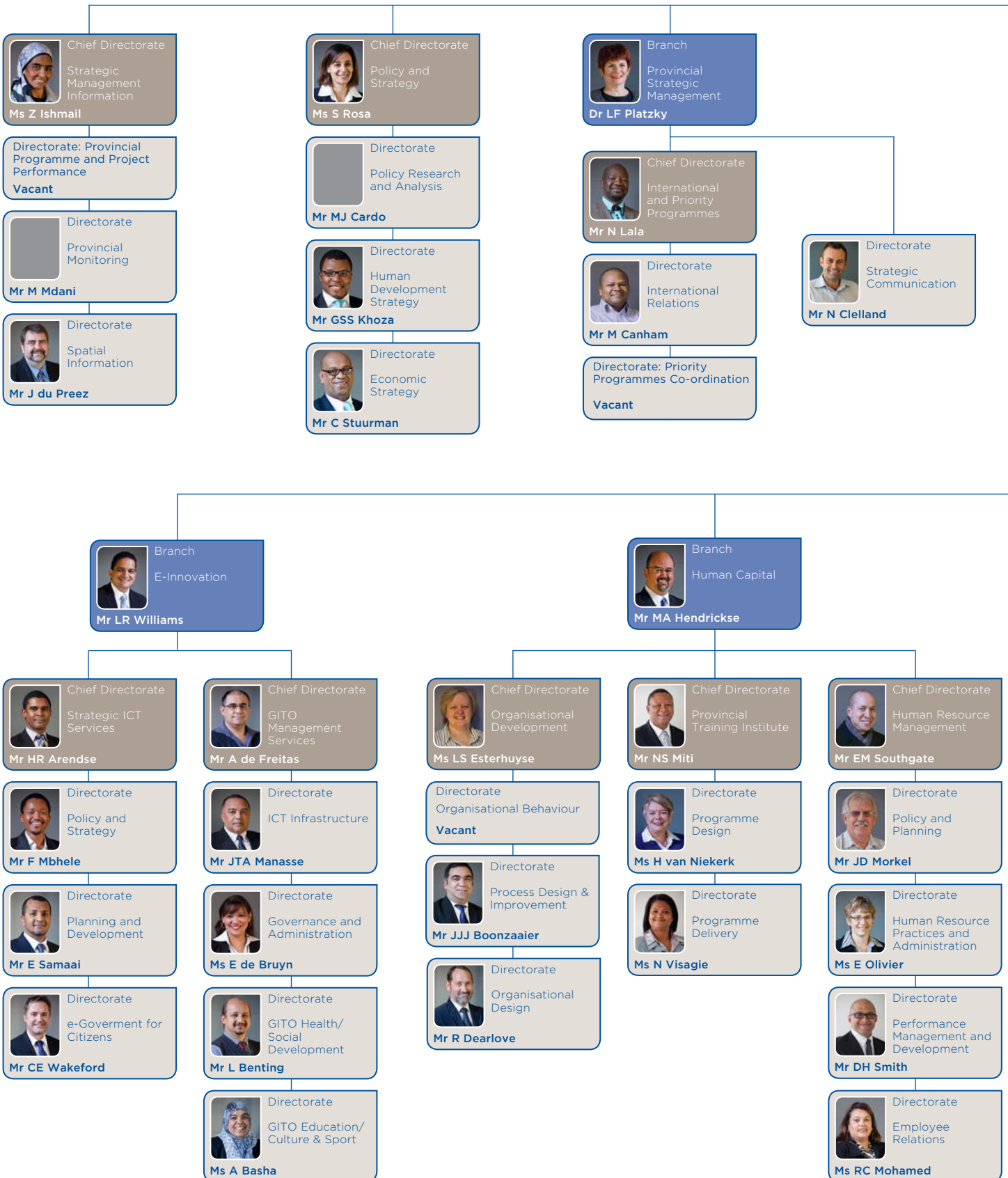






# Organisational Structure of the Department of the Premier



Premier  
  
 Ms H Zille

Director-General  
  
 Adv B Gerber

Branch  
 Executive Support  
  
 Mr LH Grootboom

Office of the Premier  
  
 Adv L Elliot

Directorate  
 Secretariat Services  
  
 Mr MC Ahmed

Chief Directorate  
 Finance and Administration  
  
 Mr DG Basson


Directorate  
 Departmental Strategy  
  
 Mr A Geldenhuys


Directorate  
 Financial Management  
  
 Mr PGC O'Brien

Directorate  
 Director-General Support  
  
 Mr R Shaw

Directorate: Supply Chain Management and Administration  
 Vacant

Head: Corporate Services Centre  
  
 Mr AF Joemat


Branch  
 Corporate Assurance  
  
 Ms H Robson


Chief Directorate  
 Legal Services  
  
 Mr L Buter

Directorate  
 Corporate Communication  
  
 Ms C Avenant


Directorate  
 Enterprise Risk Management  
  
 Ms B Misrole

Chief Directorate:  
 Internal Audit  
 Vacant

Directorate  
 Legislation  
  
 Ms A Vosloo


Directorate  
 Internal Audit: Education  
  
 Mr I Sader


Directorate  
 Litigation  
  
 Mr R Collins

Directorate  
 Internal Audit: Health  
  
 Ms V Haas

Directorate  
 Legal Advisory services  
  
 Ms A Campbell

Directorate  
 Internal Audit: Social  
  
 Mr P Swartbooi

Directorate  
 Legal Advisory Services  
  
 Mr G Reed

Chief Directorate  
 Internal Audit - Economic  
  
 Mr J Radebe

Directorate  
 Internal Audit: Governance and Administration  
  
 Ms B Cairncross