



NICD

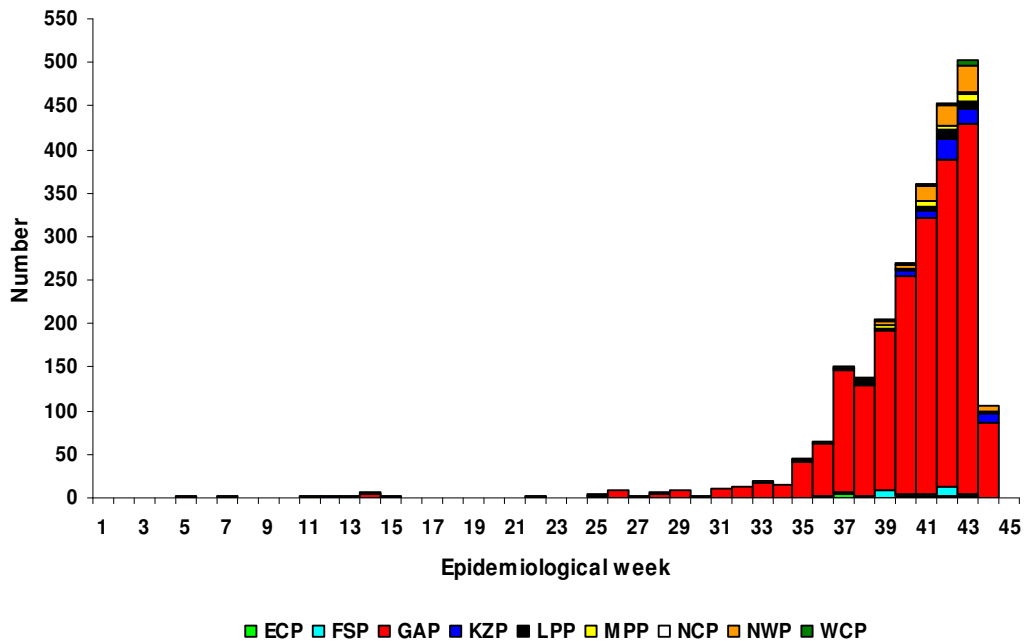
NATIONAL INSTITUTE FOR COMMUNICABLE DISEASES

Case- based rash surveillance *

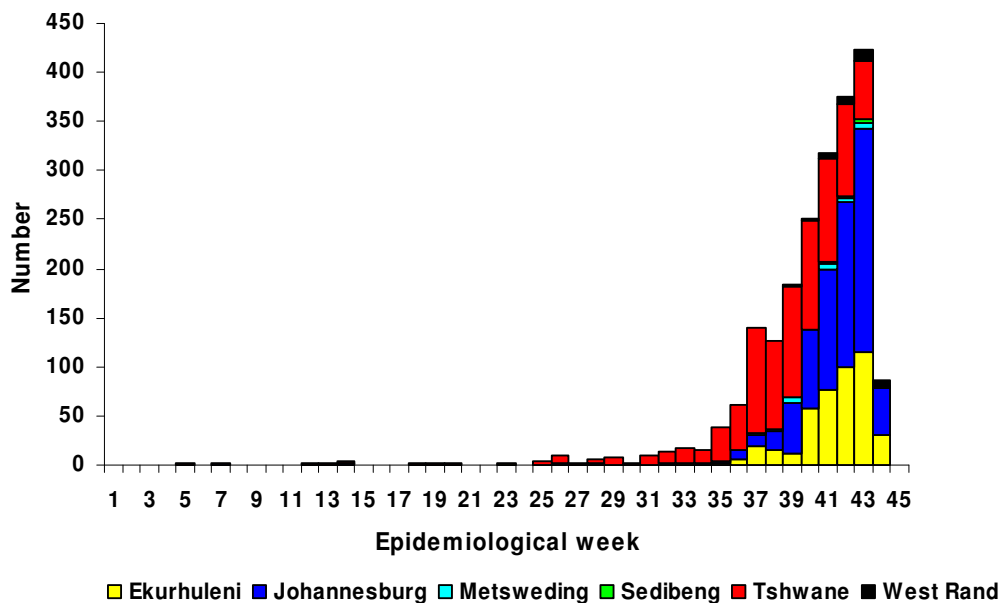
Updated on 17 November 2009



Measles IgM positive results per province : South Africa 2009



Positive Measles IgM results per district : Gauteng, South Africa 2009



*Specimens from patients of all ages who present with a fever, rash and one of conjunctivits, cough or coryza

Source: Epidemiology Division, Measles serology and Molecular Units, NICD

This report only includes laboratory confirmed cases tested at NICD.

Data presented are provisional, as reported to date; Positives are analysed by date of collection.

Data may be freely reproduced provided due acknowledgement is given to the NICD

Province abbreviations: ECP = Eastern Cape; FSP = Free State; GAP = Gauteng; LPP = Limpopo; MPP = Mpumalanga;

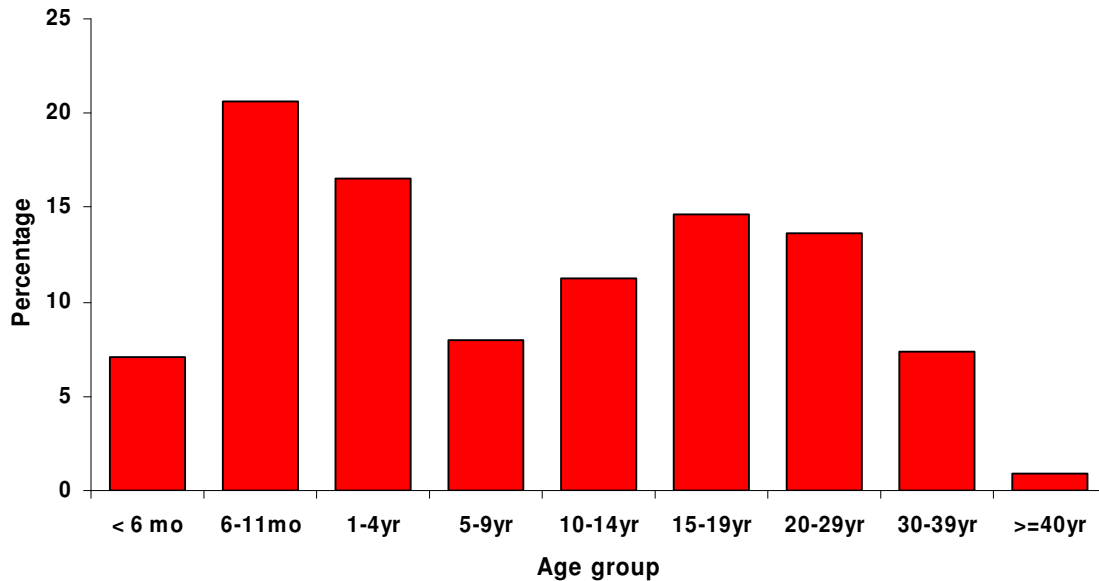
NCP = Northern Cape; NWP = North West; WCP = Western Cape



NATIONAL INSTITUTE FOR COMMUNICABLE DISEASES
Case- based rash surveillance *
Updated on 17 November 2009



Age distribution of patients with measles : South Africa 2009
N=2372



Positive measles IgM results per province: South Africa 2009

	ECP	FSP	GAP	KZP	LPP	MPP	NCP	NWP	WCP	Total
Newly confirmed cases*	2	4	218	17	4	4	1	19	5	274
Cumulative total	20	30	2104	73	30	39	7	92	19	2414

* Cases confirmed since the last report (published weekly on Tuesday afternoon)

Source: Epidemiology Division, Measles serology and Molecular Units, NICD

This report only includes laboratory confirmed cases tested at NICD.

Data presented are provisional, as reported to date; Positives are analysed by date of collection.

Data may be freely reproduced provided due acknowledgement is given to the NICD

Province abbreviations: ECP = Eastern Cape; FSP = Free State; GAP = Gauteng; LPP = Limpopo; MPP = Mpumalanga; NCP = Northern Cape; NWP = North West; WCP = Western Cape