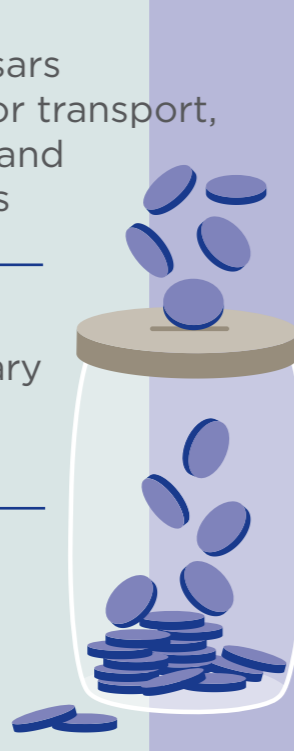


## Bursaries

**131** Masakh'iSizwe bursars received support for transport, built environment, and engineering studies

**90** staff members received staff bursary study support for studies in 2022

**25** new bursaries were awarded to promising students



## Contractor development

**26** Grade 3 to Grade 5 contractors received advanced training and mentoring support

**15** empowerment target implementation reports were completed on projects worth <R10m

**43** Grade 1 and 2 contractors completed accredited training over 10 months

## Job creation through the EPWP

**2 212** work opportunities were created

**555** full-time equivalents (FTEs) were created

## Provincial EPWP coordination

**12** provincial EPWP forums were maintained

**39** public bodies reported on EPWP targets

**3** interventions helped create work opportunities

## Skills development

**1 139** staff members were trained with Work Place Skills Plan support

**87** trainees qualified as traffic officers

**260** unemployed youths commenced National Youth Service training



## Support for professional registration

**12** employees received Professional Development Programme (PDP) support towards professional registration

**3** graduates who participated in the PDP registered with the Engineering Council of South Africa (ECSA) and geomatics professional (GISc) registered with the South African Geomatics Council.

**3** newly registered professional engineers accepted permanent employment in the Department.



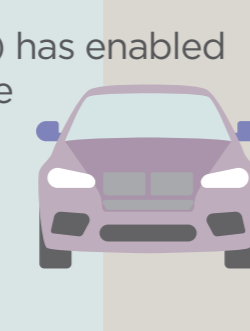
## Apprenticeships, learnerships and internships

**18** boiler-making apprentices started their training



## Transport regulation

- The DTPW Integrated Transport Hub (ITH) has enabled data-driven coordination in support of safe transport infrastructure-focused initiatives aimed at increasing safety on roads and public transport spaces.
- 85** Provincial Regulatory Entity hearings were conducted



## Schools

**3** new schools were completed in De Doorns, Heideveld and Penlyn Estate

upgrades and additions were made to **4** existing facilities, and **281** mobile classrooms were installed to quickly provide extra space for learners

## Provincial roads

**22** capital roads projects continued or reached practical completion during 2021/22 with a total expended value of R929m

**2 769 740 m<sup>2</sup>** of surfaced roads were resealed

**624 676 m<sup>2</sup>** of surfaced roads were rehabilitated

## Health infrastructure

The Gansbaai Clinic was upgraded, a new day clinic was built in Laingsburg, the new Observatory Forensic Pathology Institute neared completion, Phase 1 of a new Emergency Centre at Victoria Hospital was completed, and new acute psychiatric wards were completed in Hermanus and Bredasdorp



**13** capital projects commenced during 2021/22 with a total expended value of R154m

Preliminary designs for the following projects continued:

- Wingfield Interchange on the N1/N7.
- Upgrading of the N7 to freeway standards.
- The R300 northern extension.

The upgrading of Refinery Interchange, which is a key component of the Southern Growth Corridor, commenced

## Transport operations

- 1 217 868** bus trips were subsidised
- 12 254** cumulative annual vehicles subsidised
- 6 604** abnormal load permits were issued



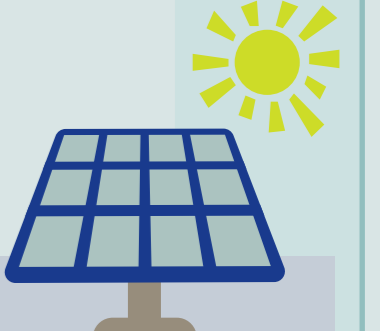
## Road safety

- 16 070** Traffic Law Enforcement operations
- 553 366** vehicles weighed
- 2 269** arrests for traffic offences
- 1 175** arrests for driving under the influence
- 156** arrests for speeding
- 5 169** vehicles discontinued
- 1 690** vehicles impounded
- 481** road safety awareness interventions implemented

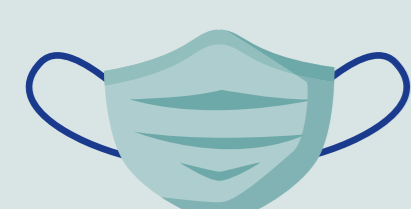


## Land and buildings

- 9** new facilities were provided
- 37** utilisation inspections of office accommodation were conducted
- 618** jobs were created through infrastructure and property management projects
- 117** condition assessments were conducted on state-owned buildings
- 30** scheduled maintenance projects were completed



## Public health support services during the COVID-19 pandemic



- 24** quarantine and isolation facilities were provided for people who did not have the means to isolate themselves
- 23 331** people benefited from safe transport provided by the Red Dot initiative to and from medical facilities and vaccination facilities
- 82 415** frontline healthcare workers benefited from safe Red Dot Lite transport to their homes during the pandemic

