

STEPS TO ACCESS GRADE 12 QUESTION AND ANSWER REVISION PROGRAMME ON THE MOODLE LMS

GRADE 12 QUESTION AND ANSWER SERIES

STEP 1: ACCESS THE WEBSITE



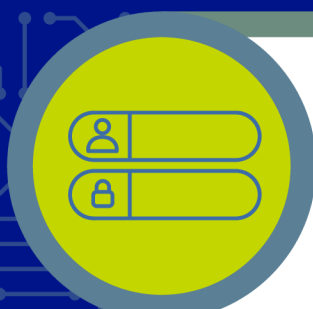
wcedelearn.westerncape.gov.za

STEP 2: LOG IN TO THE LMS



On landing page, click on "log in"
at the top right of the screen

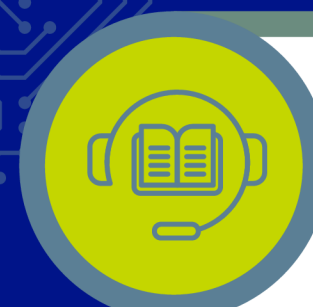
STEP 3: USERNAME AND PASSWORD



Learners:
Enter the username and password
provided to you by your teacher/school from
CEMIS

Teachers:
Log in with Persal as Username and
Password

STEP 4: SUBJECT SELECTION



Select any one of the subjects
available to you. You may be pre-
registered, otherwise self-enrol

STEP 5: ATTEMPT QUIZZES



Click on quiz/vasvra to attempt the
relevant quiz

STEP 6: REVIEW QUIZ ATTEMPT



The automatic review gives you an
overview of correct answers

STEP 6: NEW SUBJECT/QUIZ RE-ATTEMPT



Select to re-do a quiz until mastery or
click on the 'breadcrumbs' to go back
to a new subject