

Item	Cost	Quantity	Total Cost
Paper	1	3	3
Premises	2	1	2
Scissors	4	1	4
Ruler	2	1	2
Glue	3	1	3
Template	5		5
Advert	10		10
Pay Supplier		4	37
Interest 10%		40	4
Wages	2	5	10
Total Costs		24	51

PRODUCTION	
Low Quality →	3
High Quality →	4

INCOME	
Sales	15
- Total Costs	- 24
= Profit	
- Tax 50%	
= Profit	



## Small Businesses in the Green Economy

Jules Newton

# Our Water Security is at Risk



2.9-6%

of usable water  
captured by invasives



Working for Water:  
biggest Green programme  
in the World!



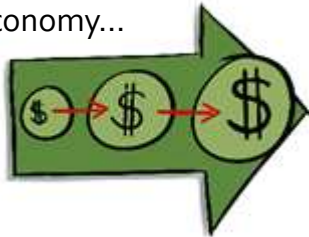
Between 48 and 72,000  
people employed in the  
sector



We should be spending R12  
billion annually  
to solve the problem

# The Green Business Value Chain Programme will:

Catalyse a strong Biomass Economy...



...by stimulating demand for invasive biomass as an input into value-adding processes, that will..



...accelerate the eradication of invasive biomass...

...enhancing utilisation of and growth potential for SMME's engaged in the Green Value Chain...



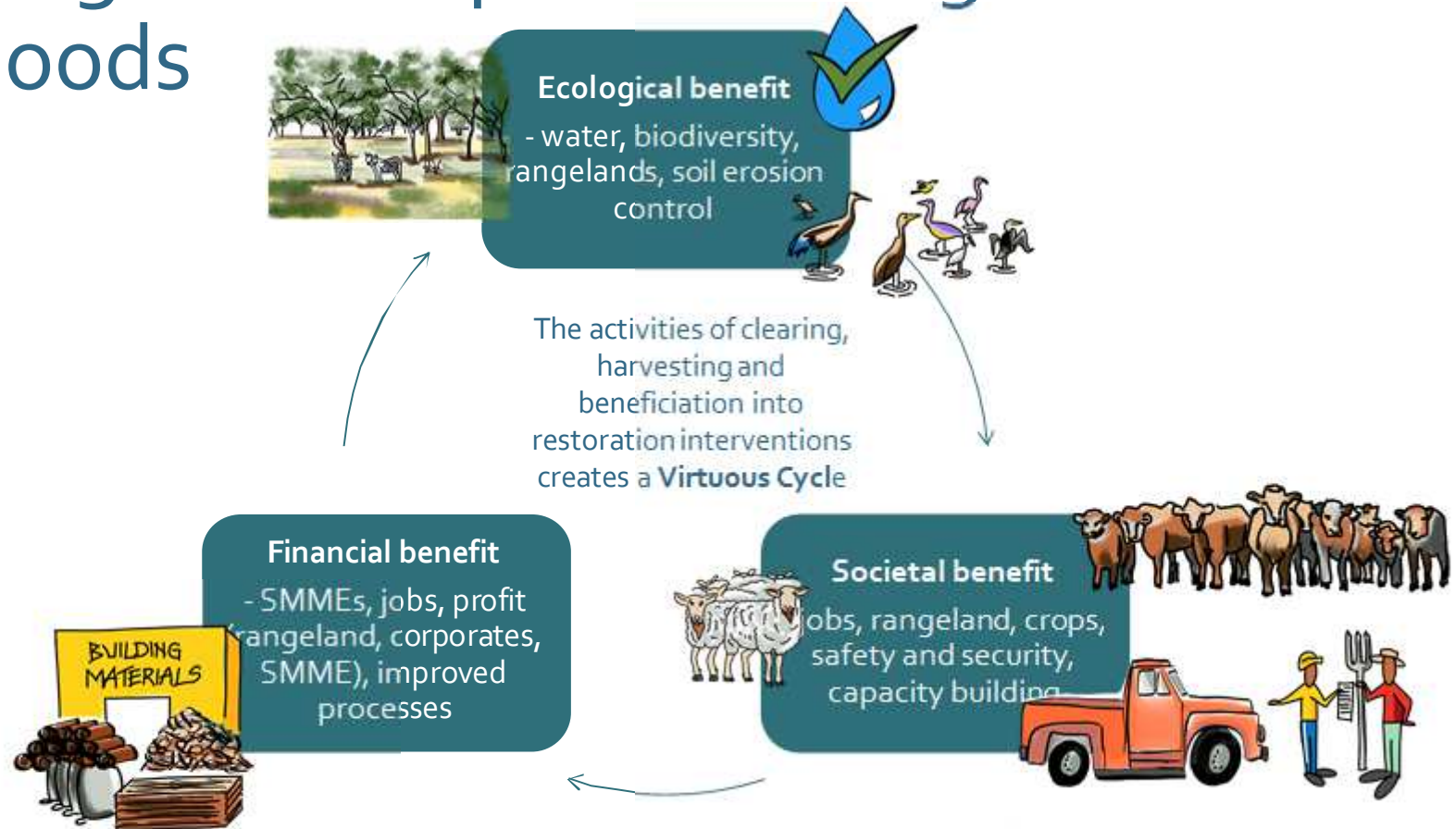
Role	Responsibility	Contribution	Impact
✓			✓
✓	✓		
✓		✓	
	✓		✓

...and driving clear understanding of roles and responsibilities, and contributions of public and private sector



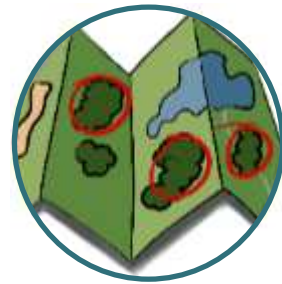
And therefore Strengthen South Africa's water security and reduce fire risk

# Restoring Landscapes: Securing Livelihoods





# Context: The Avocado Vision Green Business Value Chain Programme



Value Chain  
Investigation for local  
Geography: what will  
make economic and  
commercial sense?



Market facilitation and  
offtake creation



Small Business Skills  
Development Incubator:  
18 months training and  
mentorship





# THE BIG IDEA

A new agri-processing value chain South Africa based on the most extensive and under-utilized resources in rural areas:

Invasive Biomass

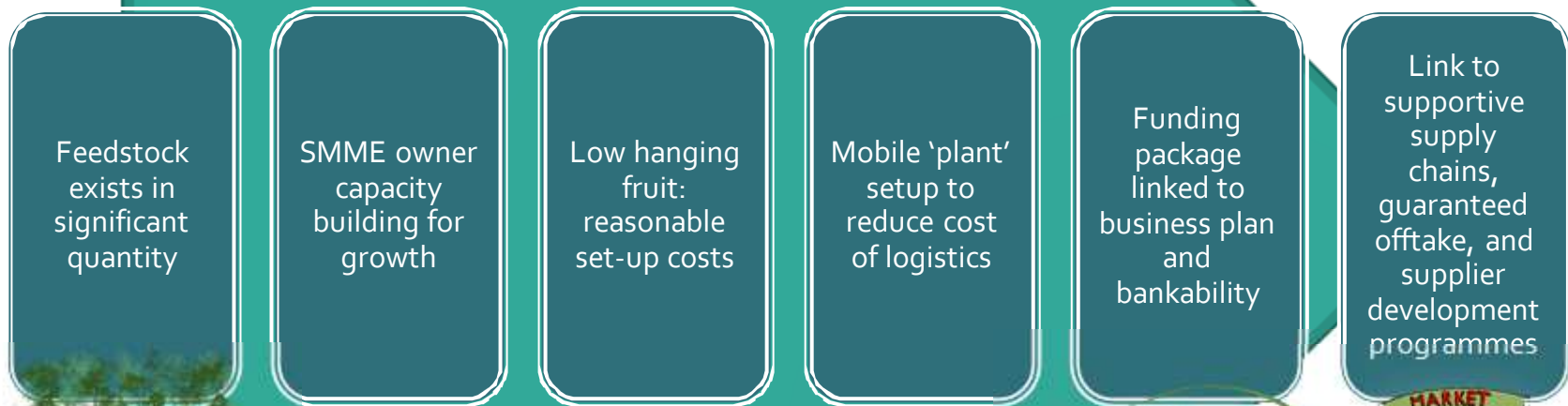
Human Capital



# Building 'Business-in-a-box'



Sustainable livelihoods



Training & Mentorship



Sustainable SMMEs



BRIDGING FINANCE



Market for invasive vegetation biomass





# THE REAL WOMEN IN THE GREEN ECONOMY

---

















R63 000 per job

# One Charcoal Processing system in Matatiele over one year: Impact story



Small Businesses: 25



Rural Jobs: 185



Tons of Charcoal: 5 500



Income earned by 25 Businesses: R11 550 000  
Plant R20 Mill



Wood biomass consumed: 22 000 tons



Hectares cleared and returned to rangeland: 1467



Water saved: 3 billion litres  
(1.5% of Hartebeespoort dam capacity)

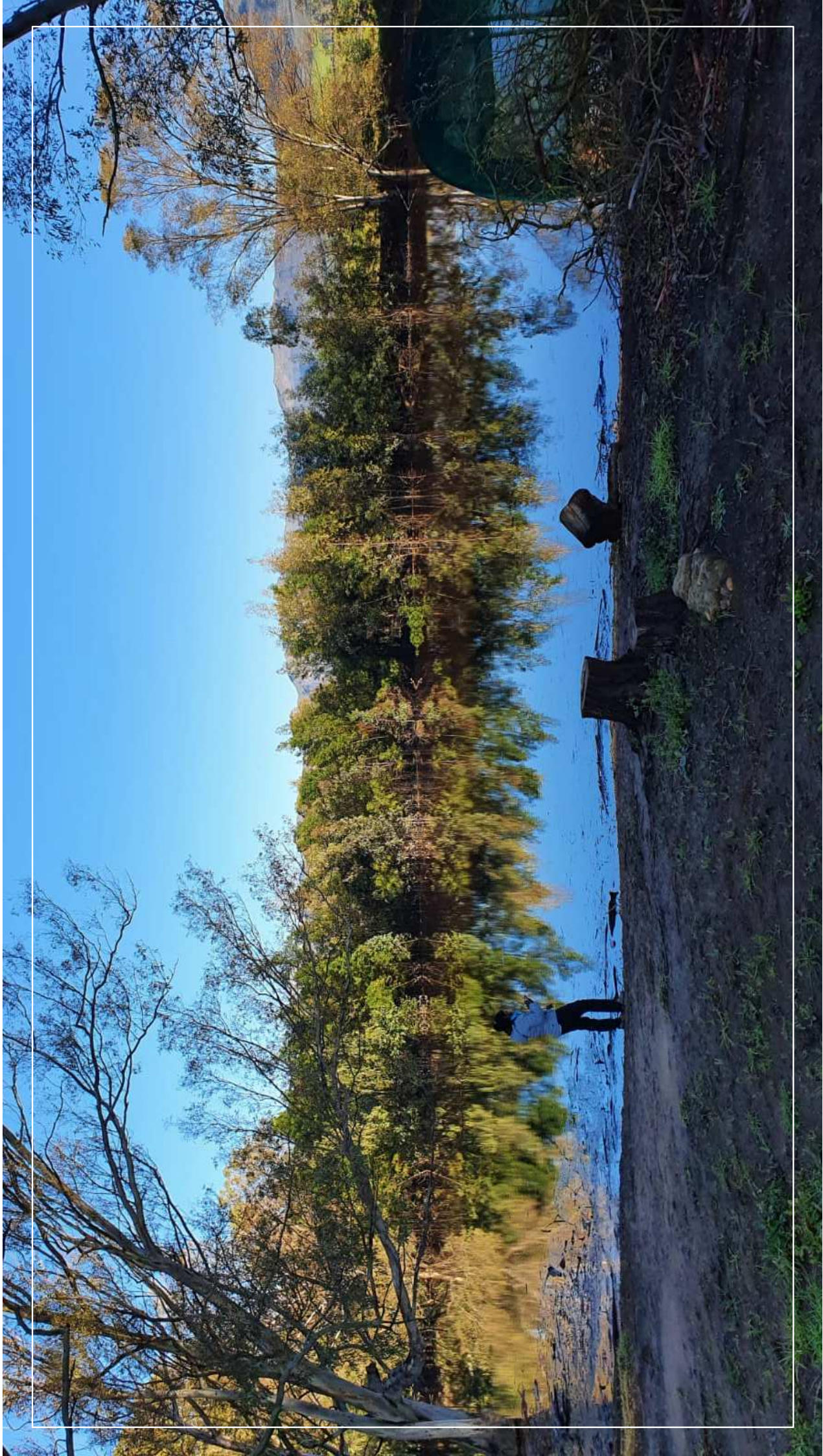
Full System Setup Investment  
R11 600 000

Incubator R3,5 million

25 Small Business setup  
R3 mil

Processing Factory setup:  
R1.6 million plant, 3.5 mill  
operating capital









**CORPORATE PROCUREMENT DECISION-  
MAKING CAN BE TRANSFORMATIONAL**

---



