

# Implementing circular economy interventions in your business

## Anthea Fransman





# WHAT DO YOU SEE HERE ?





# WHAT DO YOU SEE HERE ?





# Team Recycle 1st



Started in 2009 –

1200 sqm Warehouse Elsie's River - 30 staff - 5 trucks - 2019 Recycled 705 000kgs of material

---



# WE COLLECT



Home Collections - Curbside Collections - Complex Collections - Office Collections, Industrial companies.



# WE SORT









# WE DISTRIBUTE

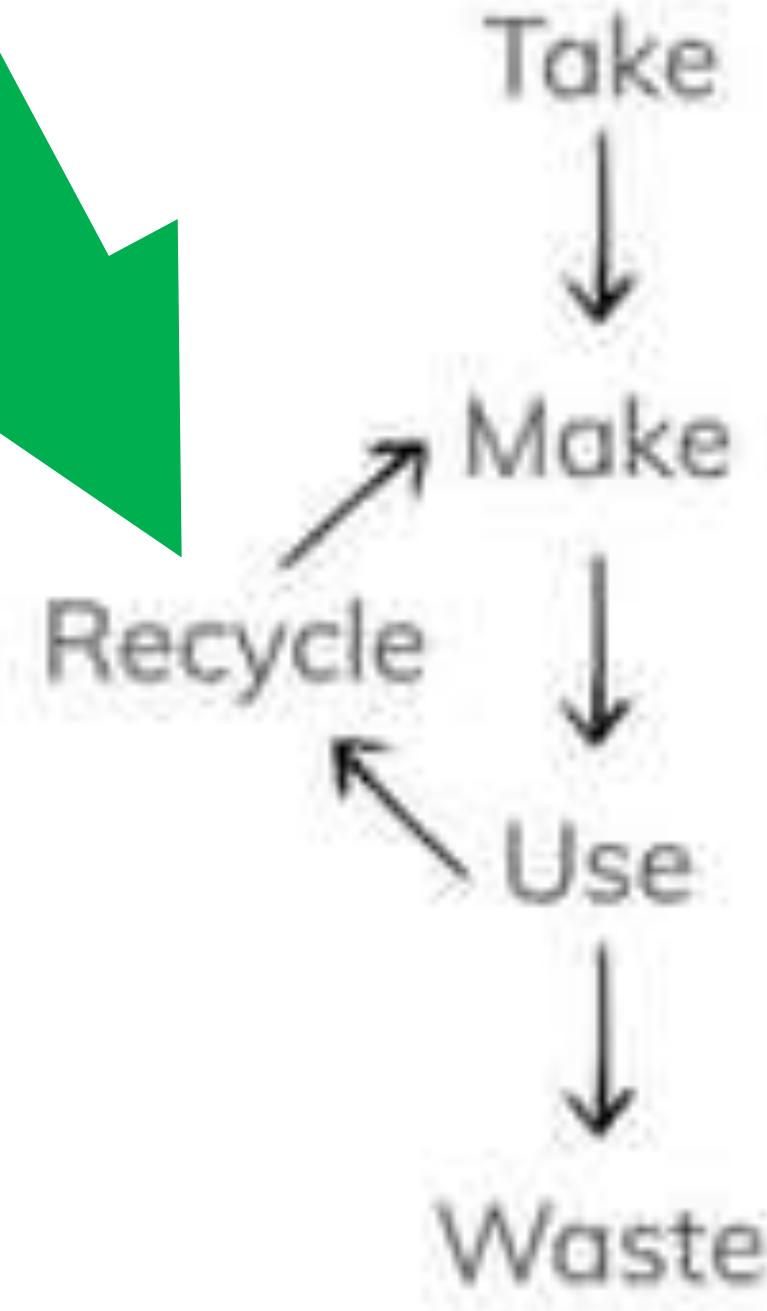




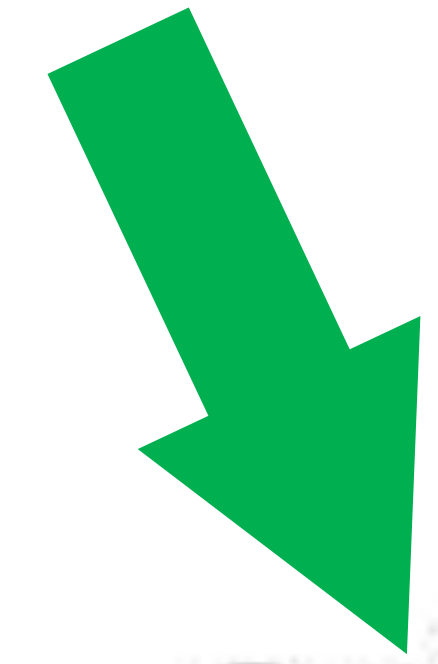
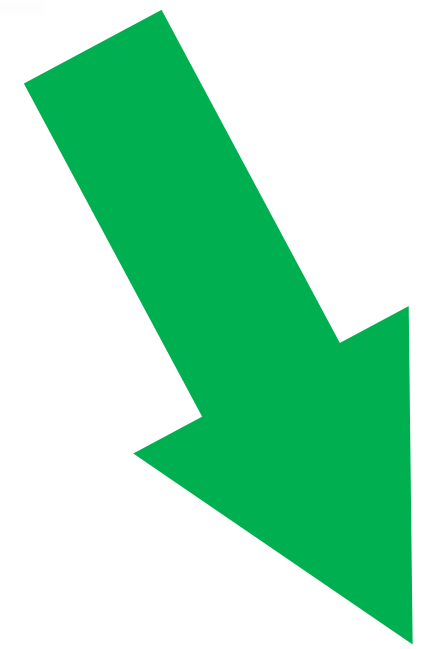
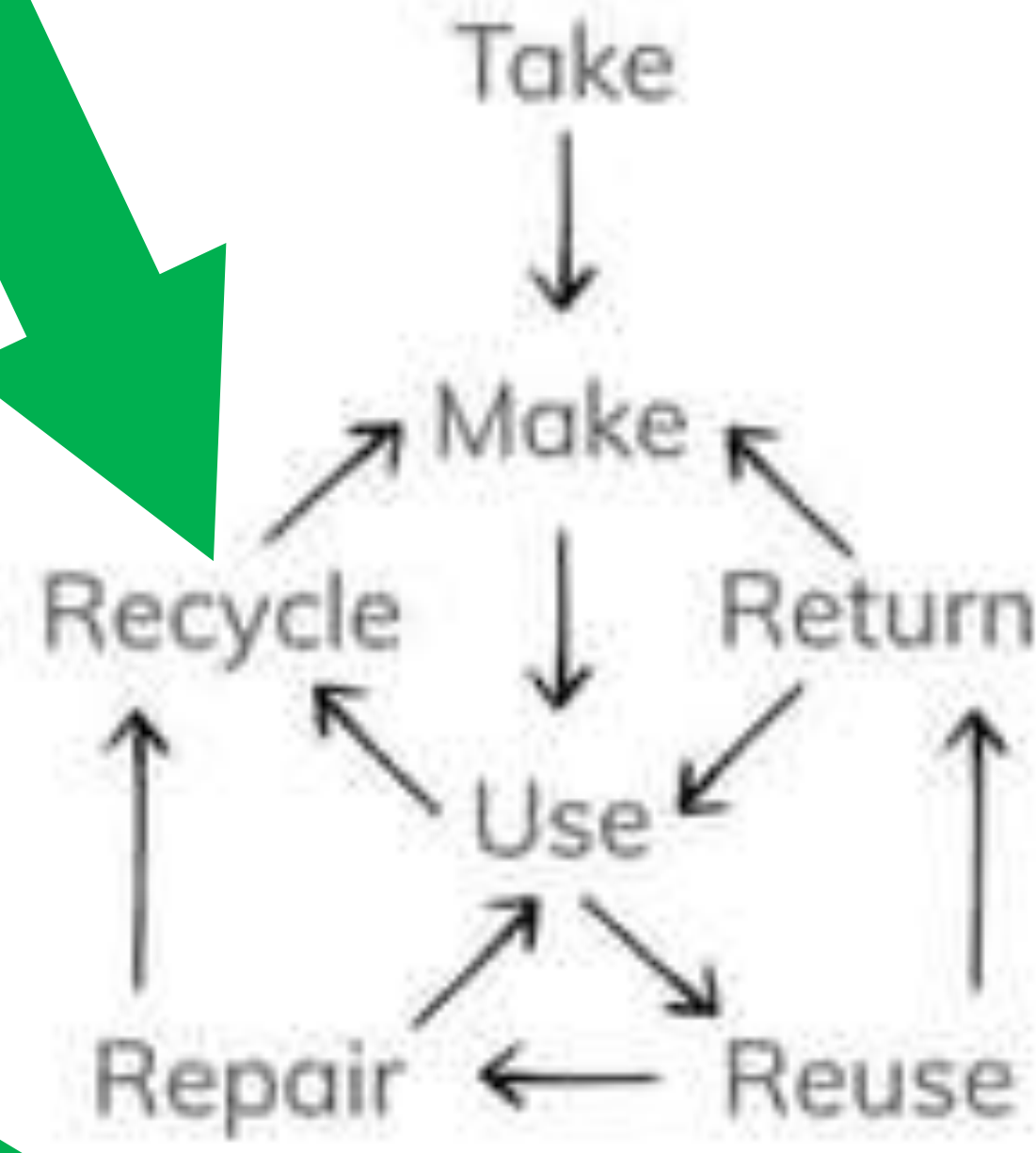
# LINEAR ECONOMY



# RECYCLING ECONOMY



# CIRCULAR ECONOMY





Recycle 1st

# RECYCLING RATES





# PAPER ONLY

- Cardboard
- Newspaper
- Magazines
- Cardboard boxes: cereal & food
- Toilet rolls
- Cigarette boxes
- Phone books & school books
- Office paper, envelopes & mail

# PLASTIC ONLY

- All plastics with a number in triangle: 1, 2, 4, 5



- Milk bottles, margarine, large yoghurt, cold drink bottles packaging, mayonnaise, and detergent containers
- Polystyrene

# GLASS ONLY

- Glass bottles
- Glass jars
- Wine bottles
- Beer bottles
- Sauce jars
- Jam jars

# TINS / METAL ONLY

# NO!

## YOU CAN'T RECYCLE ME:

- Food
- Teabags
- Nappies
- Disposable coffee cups
- Single serving yoghurt containers
- Small Danone yoghurt containers
- Code 3, 6 and 7 Plastics
- Ceramics
- Crockery
- Floor tiles
- Waxed paper
- Tissues
- Stickers
- Sticker backing
- Sweet, chocolate & chip papers
- Window glass
- Containers holding poisonous substances
- Batteries
- Light bulbs
- Tubes e.g. beauty products or toothpaste
- Foil lined pharmaceuticals tablet
- Pesticide containers
- Brakefluid

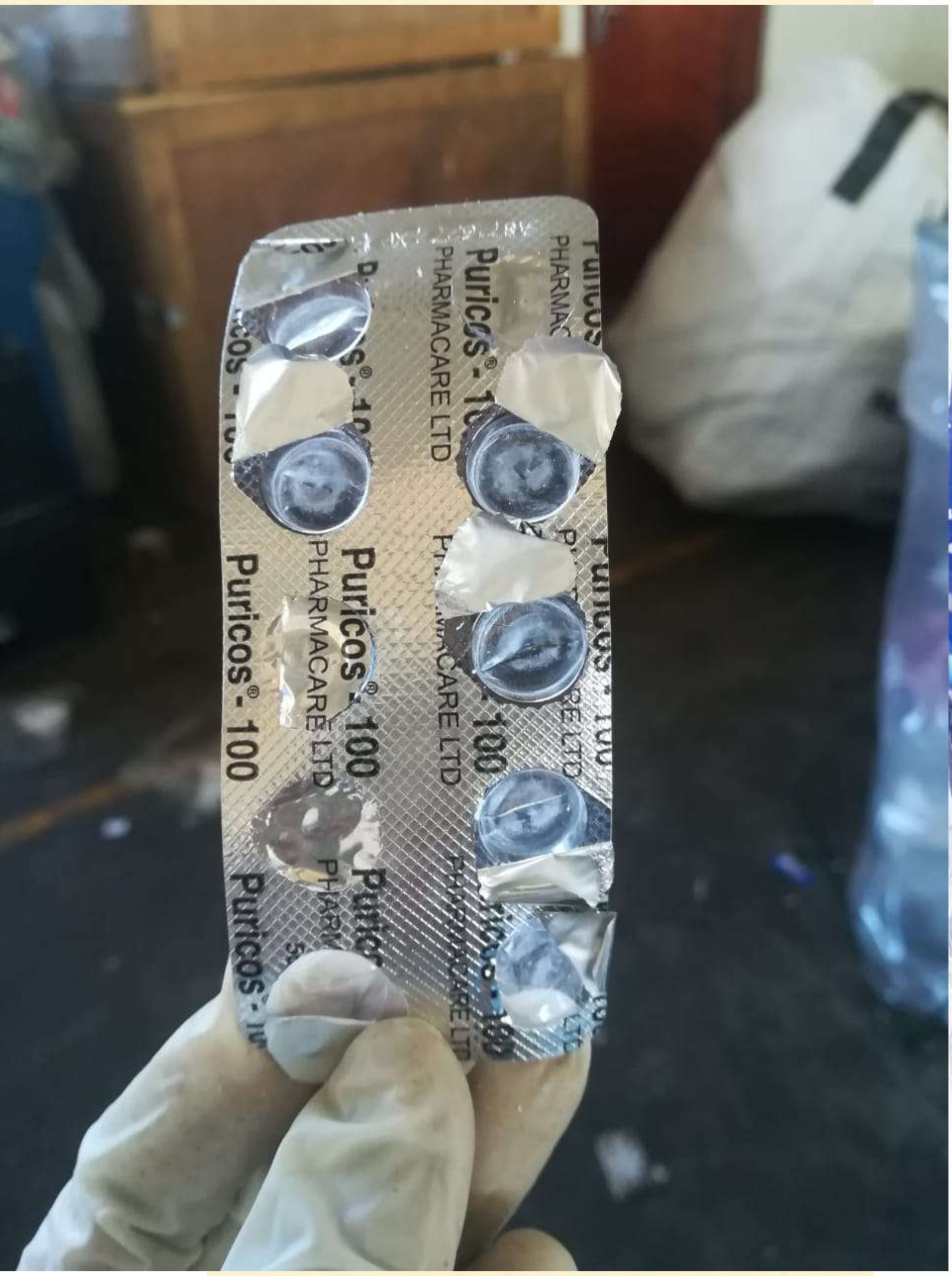




















**What s the big deal?**







# MAKING THE SHIFT





# MAKING THE SHIFT





# MAKING THE SHIFT





R10 Credit  
for Every Bottle  
Returned



# MAKING THE SHIFT

10% off your  
coffee when  
you BYO





# MAKING THE SHIFT



CITY OF CAPE TOWN  
ISIXEKO SASEKAPA  
STAD KAAPSTAD



INVEST CAPE TOWN



## CAPE TOWN

### AFRICA'S FIRST INDUSTRIAL SYMBIOSIS PROGRAMME

*Generating multiple  
benefits for the  
manufacturing industry*



**GOVERNANCE**  
City of Cape Town

**POPULATION**  
4.48 million\*

**GDP**  
ZAR 489 billion\*\*  
(USD 32.6 billion)

**DENSITY**  
1,796 persons per Km<sup>2</sup>\*\*\*





Recycle 1st



WHAT DOES **THE**  
**CIRCULAR ECONOMY**  
MEAN TO **YOU?**

#circulareconomy

# MAKING THE SHIFT

- Look at every product/tool in your business.
- Look through your bin
  - Is it **RECYCLABLE?**
  - Is it **COMPOSTABLE?**
  - Is it **RE USABLE?**
- If not, what do you need to do to change what you use or **REDESIGN** your product.





 Recycle 1st

THANK YOU