

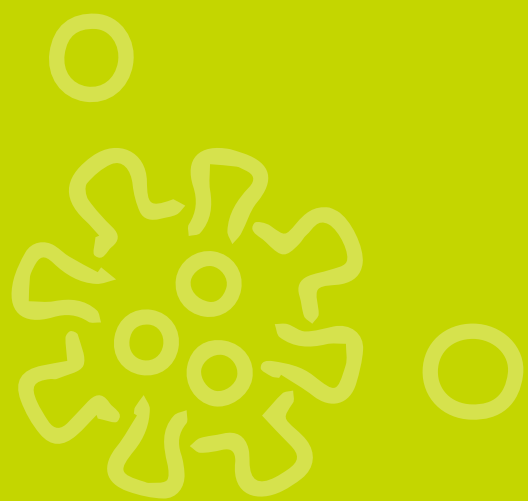
STAY SAFE WHEN BEING SOCIAL



STAY SAFE
MOVE FORWARD

LOWEST RISK - FRESHER IS BETTER

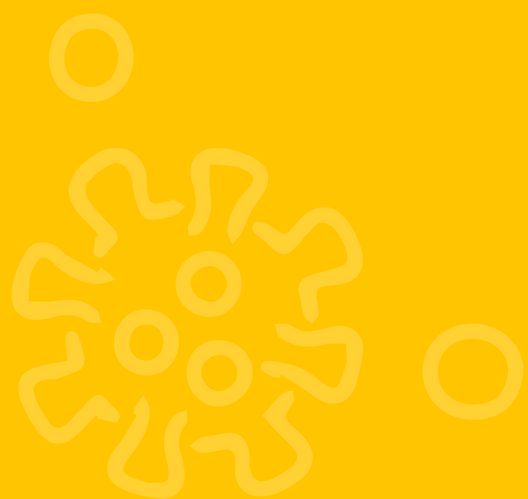
Use outside space • Do outdoor activities • Stick to spacious



STAY SAFE
**MOVE
FORWARD**

MEDIUM RISK - IN PUBLIC SPACES

Indoors or outdoors • When less than 1.5m apart • Partial ventilation



STAY SAFE
MOVE FORWARD

HIGH RISK - BE EXTRA CAREFUL IN SPACES WITH
Large crowds • Less than 1.5m apart • Poor ventilation • Confined space



STAY SAFE
MOVE FORWARD

STAY SAFE

**MOVE
FORWARD**



**Western Cape
Government**

Health