

ERFENIS WES-KAAP

Strategiese Plan vir
2020/21 – 2024/25

9 Maart 2020

Verklaring van die Uitvoerende Gesag

Deur die kundige ondersteuning van Erfenis Wes-Kaap, het die Departement van Kultuursake en Sport konstante vordering gemaak met die stelselmatige identifisering, bewaring, beskerming en bevordering van erfenishulpbronne vir almal wat die Wes-Kaap hul tuiste noem.

Hierdie strategiese plan bevat 'n uiteensetting van die maatreëls wat getref is om die diverse stedelike en landelike erfenishulpbronne van die mense van die Wes-Kaap te vier, te koester en te onderhou deur trots in beide tasbare en ontasbare erfenis te bevorder, veral onder die voorheen gemarginaliseerde groepe.

Ons is bewus daarvan dat ons met verskillende uitdagings gekonfronteer word, in die bereiking van Erfenis Wes-Kaap se strategiese doelwitte. Ek is egter vol vertroue dat Erfenis Wes-Kaap en ons departement sal voortgaan om ons wettige mandaat te bevorder om sosiale insluiting en burgerlike trots met groot sorg, bekwaamheid, aanspreeklikheid, integriteit, innovasie en responsiwiteit te verhoog.

Hierdie plan is ontwikkel om te dien as 'n amptelike riglyn vir Erfenis Wes-Kaap en die Departement vir die komende jaar, met die insette van gemeenskappe, personeel, eksterne belanghebbendes en strategiese vennote. Ek sien uit daarna om proaktief die politieke rigting te gee wat nodig is om die diversiteit van die provinsie se erfenislandskap te verenig.

AMarais

Anroux Marais


Uitvoerende Gesag van Erfenis Wes-Kaap

Verklaring van Rekenkundige Gesag

In 'n provinsie wat so uiteenlopend soos die Wes-Kaap is, is dit van kardinale belang dat 'n mens die draad vind wat mense bymekaar trek. Erfenis vervul die rol, aangesien dit maklik demonstree hoe ons 'n gedeelde geskiedenis het en sodoende geleenthede vir ons moontlik maak om as een nasie voorspoedig te wees. Erfenis Wes-Kaap is een van die belangrikste dryfvere vir sosiale insluiting in die Wes-Kaap, en dit blyk uit die aard van erfenishulpbronne wat sedert sy stigting geïdentifiseer is.

Aangesien die land na maniere kyk om sy ekonomie te herbou, verwelkom hierdie raad, wat met ingang van 1 November 2019 vir 'n periode van drie jaar deur die Minister van Kultuursake en Sport aangestel is, met groot waardering die toenemende steun wat daaraan verleen is deur die Departement van Kultuursake en Sport en die Provinsiale Tesourie. Deur hierdie ondersteuning sal ons poog om te verseker dat erfenistoepassings vinnige prosesse is en dat EWK voortgaan om sy mandaat met behendigheid uit te voer.

Hierdie strategiese plan is nie net 'n gewone dokument nie, maar ons beskou dit as 'n visie om die dienste aan die mense van die Wes-Kaap te lewer. Ons sal poog om met die Hoof-Uitvoerende Beampte en personeel van die entiteit saam te werk om te verseker dat die verbintenisse wat in hierdie dokument gemaak is, nagekom word en dat die erfenis van die inwoners van die Wes-Kaap voldoende beskerm word.



Bongani Mgijima

Voorsitter van Erfenis Wes-Kaap

Amptelike Goedkeuring

Hiermee word gesertifiseer dat hierdie Strategiese Plan:

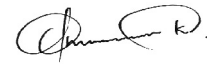
- Deur die bestuur van Erfenis Wes-Kaap onder leiding van Minister Anroux Marais opgestel is;
- Neem alle toepaslike beleide, wetgewing en ander mandate in ag waarvoor Erfenis Wes-Kaap verantwoordelik is; en
- Weerspieël die impak, uitkomste en uitsette wat Erfenis Wes-Kaap gedurende die periode 2020 / 21-2024 / 25 sal bereik, akkuraat.

Brenda Rutgers
Hoof- Finansiële Beampte



Handtekening

Mxolisi Dlamuka
Hoof- Uitvoerende Beampte



Handtekening

Brent Walters
Departementshoof: Kultuursake en Sport



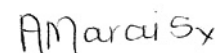
Handtekening

Bongani Mjijima
Vir die Rekenpligtige Gesag



Handtekening

Goedgekeur deur:
Anroux Marais
Uitvoerende Gesag



Handtekening

INHOUDSOPGAWE

DEEL A: ONS MANDAAT	7
1. Grondwetlike mandaat	7
2. Wetgewende- en beleidsmandate	8
3. Institusionele beleide en strategieë gedurende die vyf-jaar-beplanningsperiode	10
4. Toepaslike hofbeslissings	10
5. Visie	13
6. Missie	13
7. Waardes	13
DEEL B: ONS STRATEGIESE FOKUS	13
8. Situasië-Ontleding	13
8.1. Eksterne Omgewingsanalise	14
8.2. Interne omgewingsanalise	15
DEEL C: MEET ONS PRESTASIE	17
9. Institusionele prestasie-inligting	17
9.1. Meting van impak	17
9.2. Meting van uitkomst	17
9.3. Verduideliking van beplande prestasie gedurende die vyf-jaar-beplanningsperiode	17
10. Sleutelrisiko's	18
DEEL D: TEGNIESE AANWYSER BESKRYWINGS	19

AKRONIEME

APM	Komitee vir Argeologie, Paleontologie en Meteoriete
BELCom	Komitee vir Beboude Omgewing en Landskappe
DKES	Departement van Kultuursake en Sport
DEADP	Departement van Omgewingsake en Ontwikkelingsbeplanning
UOWP	Uitgebreide Openbarewerkeprogram
EIBS	Erfenisinligtingsbestuurstelsel
VEB	Vergaderings van Erfenisbeamptes
EBOS	Erfenisbeskermingsoorlegsonse
EWK	Erfenis Wes-Kaap
IACom	Komitee vir Impakassessering
IKT	Inligting- en Kommunikasietegnologie
LUR	Lid van die Provinsiale Uitvoerende Raad
MOU	Memorandum van Verstandhouding
MTUR	Mediumtermynuitgaweraamwerk
WNEH	Wet op Nasionale Erfenishulpbronne, 1999
WOFB	Wet op Openbare Finansiële Bestuur, 1999
PK	Provinsiale Kennisgewing
PSP	Provinsiale Strategiese Plan
SAEHA	Suid-Afrikaanse Erfenishulpbronne-agentskap
SOP	Standaard Operasionele Prosedure
VIP	Visie-geïnspireerde Prioriteite

DEEL A: ONS MANDAAT

1. Grondwetlike mandaat

Erfenis Wes-Kaap ontleen sy mandaat aan die volgende afdelings van die Grondwet:

Afdeling	Beskrywing
Grondwet van die Republiek van Suid-Afrika, 1996	
Artikel 24(b)(ii) Omgewing	EWK moet deur wetgewende en ander maatriëls die bevordering van die bewaring van die erfenisomgewing in die Wes-Kaap reguleer. Dit mag nie uitgeoefen word op 'n wyse wat bots met enige bepaling van die Handves van Regte nie.
Artikel 31: Kultuur-, godsies- en taalgemeenskappe	EWK moet seker maak dat sy programme en projekte die kulturele verskeidenheid van die bevolking van die Wes-Kaap in ag neem.
Artikel 41: Beginsels van regering van samewerking en interregeringsbetrekkinge	EWK werk met al die regeringsferesaam. Ingevolgesy mandaat, werk EWK nou saam met die Department van Kultuursake en Sport, die Suid-Afrikaanse Erfenishulpbronagentskap en munisipaliteite in die Wes-Kaap.
Bylae 4A: Funksionele gebiede van konkurente nasionale en provinsiale wetgewende bevoegdheid.	Erfenis vorm deel van "kultuuraangeleenthede" wat samelopende funksies is en dus oefen EWK sy mandaat uit in die konteks van nasionale sowel as wetgewende omgewings.
Grondwet van die Wes-Kaap, 1997, Wet 1 van 1998	
Artikel 70	Provinsiale wetgewing moet voorsiening maak vir die instelling en redelike befondsing, binne die Wes-Kaapse Regering se beskikbare hulpbronne, van 'n kultuurraad of -rade vir 'n gemeenskap of gemeenskappe in die Wes-Kaap, wat 'n gemeenskaplike kultuur- en taalerfenis deel.
Artikel 81	EWK moet beleide implementeer om die welsyn van die mense van die Wes-Kaap aktief te bevorder en in stand te hou, insluitende beleide wat daarop gerig is om die volgende te bereik: <ul style="list-style-type: none"> • Die berskerming en bewaring van die natuurhistoriese, argeologiese en argitektoniese erfenis van die Wes-Kaap tot voordeel van die huidige geslag en toekomstige geslagte. • EWK moet spesifieke beleide implementeer om hierdie bepalings te ondersteun.

2. Wetgewende- en beleidsmandate

Erfenis Wes-Kaap (EWK) funksioneer binne die wetgewende mandate waarop die algemene funksionering daarvan gebaseer is:

- om goeie bestuur op alle vlakke te bevorder;
- die burgerlike samelewing te bemagtig om die erfenishulpbronne te koester en te bewaar, sodat dit aan toekomstige geslagte bemaak kan word;
- algemene beginsels neer te lê vir erfenishulpbronbestuur in die hele Wes-Kaap; en
- 'n geïntegreerde stelsel in te stel vir die identifisering, assessering en bestuur van erfenishulpbronne in die provinsie ingevolge die Wet op Nasionale Erfenishulpbronne en sy regulasies.

Erfenis Wes-Kaap werk binne die raamwerk van die volgende wetgewing:

Nasionale Wetgewing	Verwysing	Beskrywing
Die Wet op Nasionale Erfenishulpbronne, 1999	Wet 25 van 1999	Om die Minister te adviseer oor die implementering van die Wet. EWK moet ook stelsels en prosedures instel om die voorskrifte van die wet tot uitvoering te bring.
Wet op Openbare Finansiële Bestuur, 1999	Wet 1 van 1999	As 'n openbare entiteit moet EWK gesonde stelsels vir finansiële bestuur vestig ter nakoming van die voorskrifte van die wet.
Wet op die Bevordering van Toegang tot Inligting, 2000	Wet 2 van 2000	Hierdie wet gee uitvoering aan die reg om toegang te verkry tot rekords wat deur die staat, regeringsinstellings en privaat liggame in bewaring gehou word. EWK en elke ander openbare en privaat liggaam moet onder andere: <ul style="list-style-type: none"> • 'n handleiding opstel wat aan lede van die publiek verduidelik hoe om aansoek te doen om toegang te verkry tot inligting wat deur die liggaam gehou word; en • 'n Inligtingsbeampte aanstel wat versoeke om toegang tot inligting wat deur die liggaam gehou word, te oorweeg.
Wet op die Bevordering van Administratiewe Geregtheid, 2000	Wet 3 van 2000	Hierdie Wet: <ul style="list-style-type: none"> • Sit die reëls en riglyne uiteen wat administrateurs moet volg wanneer besluite geneem word; • Vereis dat administrateurs mense inlig oor hulle reg tot hersiening of appèl en hul reg om redes te eis; • Vereis van administrateurs om redes vir hulle besluite te verstrek; en • gee aan lede van die publiek die reg om die beslissings van administrateurs in die hof te betwis.

Nasionale Wetgewing	Verwysing	Beskrywing
Wet op die beskerming van Persoonlike Inligting, 2013	Wet 4 van 2013	Hierdie wet plaas 'n verantwoordelikheid op instellings om die volgende te verseker: <ul style="list-style-type: none"> om die beskerming van persoonlike inligting wat deur die publiek en privaat liggame verwerk is, te bevorder; om sekere voorwaardes in te stel ten einde minimum vereistes vir die verwerking van persoonlike inligting daar te stel. Aangesien EWK persoonlike inligting insamel in die verwerking van aansoeke, sal die Wet op die Beskerming van Persoonlike Inligting (POPI) nagekom moet word.
Provinsiale Wetgewing	Verwysing	Beskrywing
Wes-Kaapse Erfenishulpbronbestuursregulasies, 2002	PK 336 van 25 Oktober 2002	Hierdie regulasies wat deur die LUR verantwoordelik vir kuns en kultuur gepubliseer word, is die grondleggingsdokument van die EWK, wat sy mandaat binne die provinsie bepaal en verskillende prosedures uiteensit.
Wes-Kaapse Erfenishulpbronbestuursregulasies, 2003	PK 298 van 29 Augustus 2003	Hierdie regulasies word gepubliseer om prosedures vir die doen van verskillende aansoeke by die EWK uiteen te sit. (Die regulasies wat op hierdie datum gepubliseer is, is die Engelse weergawe.)
Wes-Kaapse Erfenishulpbronbestuursregulasies, 2003	PK 212 van 10 November 2004	Hierdie regulasies word gepubliseer om die prosedures vir die maak van verskeie aansoeke by EWK uiteen te sit. (Die regulasies wat op hierdie datum gepubliseer is, is die weergawes in Afrikaans en Xhosa.)
Regulasies (EWK) oor die proses vir die publikasie van algemene beleidsverklarings en bewaringsbestuursplanne, 2015	PK 7497/2015 September 2015	Hierdie regulasies word deur die Raad van EWK gepubliseer en sit prosedures uiteen vir die publikasie en aanvaarding van Algemene Beleidsverklarings en Bewaringsbestuursplanne.

3. Institusionele beleide en strategieë gedurende die vyf-jaar-bepenningsperiode

Beleid	Beskrywing
Nasionale beleide	
Nasionale Witskrif oor Kuns en Kultuur en Erfenis (1996)	Hierdie dokument bied 'n raamwerk vir nasionale en provinsiale beleid oor kuns, kultuur en erfenis, asook biblioteek- en argiefdienste.
Beleide van Erfenis Wes-Kaap	
Erfenis Wes-Kaap se Handboek van 20 September 2013 soos bygewerk in 2017.	Hierdie handboek bevat alle beleide, prosedures, riglyne en reëls van die organisasie. Dit word gereeld bygewerk sodra die Raad 'n nuwe beleid goedkeur of 'n bestaande beleid wysig.

4. Toepaslike hofbeslissings

Hofsaak	Verwysing	Impak op DKES
<i>Qualidental Laboratories v Heritage Western Cape [2007] SCA 170 (RSA)</i>	Hof van Appèl nr. 647/06	Hierdie uitspraak bevestig die magte wat aan die LUR en EWK verleen is om ingevolge artikel 48 van die Wet op Nasionale Erfenishulpbronne, 1999, voorwaardes vir 'n ontwikkeling te stel.
<i>Top Performers (Pty) Ltd v Minister of Cultural Affairs and Recreation</i>	Wes-Kaapse Hoog-geregshof saak nr. 5591/05	Hierdie uitspraak het 'n diepgaande impak gehad op die appèlprosesse van die tribunaal wat ingevolge artikel 49 van die Wet op Nasionale Erfenishulpbronne 1999, gelees in samehang met Regulasie 12 van PK336 van 2003, deur die LUR aangestel is. Die DKES en die LUR het regstellende stappe gedoen om billike administratiewe prosesse te verseker en voorsiening te maak vir die toelating van nuwe bewyse in die rekord van 'n tribunaalproses, asook beter nakoming van die reëls van natuurlike geregtigheid ingevolge die beginsel van audi alteram partem maxim.

Hofsaak	Verwysing	Impak op DKES
<i>Willows Properties (Pty) Ltd v Minister of Cultural Affairs and Sport</i>	Wes-Kaapse Hoog-geregshofsaak nr. 13521/08	Die aansoeker het 'n dringende aansoek by die Hoë Hof ingedien ten einde die LUR te verplig om 'n besluit te neem, of anders om die Rekord van Besluitneming uit te reik ten opsigte van 'n appèl wat by die LUR ingedien is ingevolge artikel 49 van die Wet op Nasionale Erfenishulpbronne, 1999, saamgelees met Regulasie 12 (7) of PK 336 van 2003. Die impak van die uitspraak op die DKES is dat daar verseker moet word dat die tribunale rekords van besluitneming betyds uitgereik word. Regstellende stappe is gedoen.
<i>Waenhuiskrans Arniston Ratepayers Association and Another v Verreweide Eiendomsontwikkeling (Edms) Bpk and Others 1926/2008 [2009] ZAWCHC 181.</i>	Wes-Kaapse Hoog-geregshof saak nr. 1926/2008	Die hof het dit oorweeg of die Suid-Afrikaanse Erfenishulpbronagentskap of EWK jurisdiksie het ten opsigte van terreine wat ingevolge artikel 35 en 36 van die Wet op Nasionale Erfenishulpbronne, 1999 deur die SEAHA as Graad 1-terreine gegradeer is. Die Hof het bevind dat die SAEHA in sulke gevalle wel jurisdiksie het. Die implikasie van hierdie uitspraak vir DKES is dat die Departement regshulp aan EWK moet verleen om die wetgewing te vertolk en moet seker maak dat EWK binne sy wetlike mandaat optree.
<i>Peter Gees v the Provincial Minister of Cultural Affairs and Sport, Western Cape, the Chairperson, Independent Appeal Tribunal, Heritage Western Cape, the City of Cape Town, City Bowl Ratepayers; & Residents' Association</i>	Wes-Kaapse Afdeling van die Hoog-geregshof van Suid-Afrika saak nr. 6205/2015	Die hof het bevestig dat die oplegging van voorwaardes binne die raamwerk van die Wet op Nasionale Erfenishulpbronne, 1999 val en dat dit in ooreenstemming is met die oorhoofse omvang van die Wet. Voorwaardes kan ingevolge artikel 34 (1) van die Wet opgelê word in 'n permit vir die slooping van 'n bestaande struktuur ouer as 60 jaar.

Hofsaak	Verwysing	Impak op DKES
<i>Piketberg Local Heritage Committee and Another v Liebco Vleishandelaars Edms Bpk and others (Heritage Western Cape 2nd Respondent)</i>	Wes-Kaapse Afdeling van die Hooggeregshof. 1103 2016	Aansoek om die hersiening van 'n besluit van die EWK se Komitee vir Beboede Omgewings en Landskappe (BELCom). Toestemming is deur BELCom verleen om 'n gebou op Erf 207 in Piketberg te sloop. Die Piketberg Erfeniskomitee het by die Hooggeregshof aansoek gedoen dat die besluit hersien moet word, aangesien daar aangevoer is dat daar nie aan die bepalings van die Wet op die Bevordering van Administratiewe Geregtigheid voldoen is nie. Die hof het die huidige beleid van EWK in oorweging geneem, wat slegs konsultasie met geregistreerde bewaringsliggame behels, en het aangevoer dat aangesien besluite wat geneem is, die potensiaal het om lede van die algemene publiek te raak, wyer konsultasie nodig is. Dit beteken dat EWK moet seker maak dat openbare deelname ingevolge die PAJA plaasvind voordat 'n besluit oor 'n aansoek geneem word.
<i>Bo-Kaap Residents and Ratepayers Association and others v City of Cape Town and others</i>	Wes-Kaapse Afdeling van die Hooggeregshof van Suid-Afrika, nr. 7031/2017	EWK het in hierdie aansoek ingegryp waarin die Burgervereniging (wat 'n geregistreerde bewaringsliggaam is) aansoek gedoen het om 'n hersiening van die Stad Kaapstad se besluit om 'n hoë gebou op te rig wat gedeeltelik binne 'n EBOS geleë is en aan die Bo-Kaap en Riebeeck-plein grens. Die hof het bevind dat artikel 27 (18) van die Wet op Nasionale Erfenishulpbronne nie uitgebrei kan word om te vereis dat 'n permit deur die ontwikkelaar van 'n gebou aangrensend aan 'n erfenisterrein verkry moet word nie. Die hof het verder bevind dat die Stad Kaapstad al die toepaslike faktore in aanmerking geneem het en dat dit gevolglik nie sy besluit kan hersien of ter syde stel nie.
<i>Tower Property Fund Limited v Heritage Western Cape</i>	Wes-Kaapse Afdeling van die Hooggeregshof van Suid-Afrika 7000/2018	Aansoek om 'n bevel om die staak werkebevel op te hef wat deur EWK beteken is met betrekking tot bouwerk op 'n aangrensende erfenishulpbron, naamlik Graad IIIA-kerkgebou. Die hof het aangevoer dat EWK die aansoeker 'n geleentheid moes gegee het om te reageer voordat die staak werkebevel beteken is.

DEEL B: ONS STRATEGIESE FOKUS

5. Visie

Inklusiewe, getransformeerde, mense-gesentreerde, volhoubare bestuur van erfenishulpbronne in die Wes-Kaap.

6. Missie

Erfenis Wes-Kaap (EWK) verseker en implementeer die inklusiewe identifikasieidentifisering, volhoubare en geïntegreerde bestuur, bewaring en bevordering van tasbare en ontasbare erfenishulpbronne om sodoende byten einde 'n bydrae te draal tot transformasie en nasiebou.

7. Waardes

Sorg, bevoegdheid, verantwoordbaarheid, integriteit, innovering, responsiwiteit, inklusiwiteit en respek.

8. Situasië-Ontleding

Sedert die totstandkoming van Erfenis Wes-Kaap in Oktober 2002, is omvattende stelsels ontwikkel vir die bestuur van aansoeke wat ingevolge die Wet op Nasionale Erfenishulpbronne, 1999 ingedien is. Die EWK word erken as die voorste erfenishulpbronowerheid ten opsigte van hierdie gebied.

Die organisasie het die afgelope jaar probeer om 'n aantal kwessies rakende die belangrikste bedryfsaktiwiteit van die saak te verhelder. Duidelike reëls is vir die bestuur van sy bedrywighede opgestel, veral met betrekking tot die verwerking van aansoeke. Plaaslike owerhede kan ook plaaslike erfenishulpbronne bestuur. Gesprekke word met plaaslike munisipaliteite voortgesit om 'n raamwerk daar te stel waarmee die delegeringsproses kan voortgaan. Van belang vir plaaslike owerhede is die regulasies vir s30 en s31 van die WNEH wat EWK finaliseer, wat die openbare raadplegingsproses reguleer wat benodig word vir die vestiging van erfenisregisters en erfenisgebiede. Die daarstelling van erfenisregisters en erfenisgebiede wat bestaan, sal sekerheid skep oor watter formele beskermde hulpbronne en gebiede beskerm word en dit sal die algemene beskerming van die WNEH in sulke gebiede moontlik maak. EWK bou voort op sy samewerkingsverhouding met die Suid-Afrikaanse Erfenishulpbronagentskap (SAHRA) in terme van die Memorandum van Verstandhouding (MOU) ten opsigte van die bestuur van terreine van nasionale belang binne die Wes-Kaap en ander sake van transversale belang.

Tydens sy strategiese beplanningsessie het EWK die volgende as sy belangrikste prioriteite geïdentifiseer:

- die bou van 'n doeltreffende bestuurstelsel vir erfenishulpbronne wat belanghebbendes en gemeenskappe in staat stel om vertrou te hê in die werk van die EWK.
- die verklaring van belangrike erfenishulpbronne as provinsiale erfenisterreine ten einde die diversiteit van die provinsie en die erfenis van gemeenskappe wat in die verlede verwaarloos is, te weerspieël;
- bevestig die verhouding met munisipaliteite en bewaringsinstansies ten einde te verseker dat die NHRA voldoen aan die voorwaardes wat in permitte en ander besluite aangeteken is;

- uitreikingsprogramme na gemeenskappe te onderneem ten einde die positiewe en stabiliserende gevolge wat erfenis kan hê in die oplos van sosiale kwale, die skep van sosiale insluiting en die opbou van aktiewe burgerskap uit te lig; en
- verbetering van die waarde van erfenishulpbronne deur gebruik te maak van verklarende tekens.

8.1. Eksterne Omgewingsanalise

Politiese omgewing

Alhoewel Erfenis Wes-Kaap nie 'n politieke organisasie nie, word die raad deur die Minister verantwoordelik vir Kultuursake in die Wes-Kaap benoem. Die Minister stig die organisasie ingevolge Artikel 23 van die Wet op Nasionale Erfenishulpbronne. Erfenis Wes-Kaap word deur die Departement van Kultuursake en Sport ondersteun deur jaarlikse oordragbetalings- en ondersteuningsdienste wat mensehulpbronne, finansiële ondersteuningsdienste en IKT-ondersteuningsdienste insluit.

Ekonomiese omgewing

Suid-Afrika en die Wes-Kaap beleef swak ekonomiese groei en in die lig hiervan is die werk wat EWK doen, geïdentifiseer as een van die moontlike wondermiddels om groei te stimuleer. Dit is om hierdie rede dat die steun aan EWK verhoog is deur middel van 'n geormerkte finansiering gedurende die Mediumtermyn-bestedingsraamwerk.

Sosiale omgewing

Die openbare belangstelling in erfenis neem steeds toe en onlangse regspraak toon die aktiewe burgerdeelname aan die erfenisbestuursprosesse van die EWK. Die EWK moedig plaaslike gemeenskappe aan om hulself te registreer as bewaringsinstansies ingevolge Artikel 25 van die NHRA. Dit laat bewaringsliggame formele kommentaar lewer binne die erfenisaansoekproses van EWK. Bewaringsliggame bemagtig gemeenskappe om aktief insette te lewer oor die belangrikheid van geïdentifiseerde erfenishulpbronne in hul plaaslike gebiede. EWK publiseer sy vergaderingagendas en notules op sy blog om belangstellende plaaslike gemeenskappe toegang tot inligting te gee. Verdere opdaterings word ook weekliks op die blog verskaf, waar besluite geneem word tydens die Vergaderings van Erfenisbeamptes (VEBs).

Tegnologiese omgewing

Sedert EWK 'n aanlyn-bestuurstelsel vir inligting ontwikkel het, het hy onlangs met die nasionale agentskap vir erfenishulpbronne gesels om sy aanlyn-stelsel met dié van SAEHA saam te smelt in die sogenaamde Suid-Afrikaanse Erfenis Inligtingsbestuurstelsel (SAHRIS). SAEHA, as die nasionale agentskap, kan bepaal hoe 'n entiteit daarvoor verslag doen ten opsigte van die bestuur van die nasionale boedel ingevolge die NHRA. Daar word voorsien dat die gebruik van SAEIBS groter aanlyn toeganklikheid van die aansoekproses en insette tot die nasionale voorraaddatabasis van SAEHA moontlik sal maak.

Omgewing

Die onlangse droogte en brande het die kommer verhoog oor die impak van klimaatsverandering en die verhoogde risiko van natuurrampe in die Wes-Kaap. Sulke risiko's hou 'n risiko in vir erfenishulpbronne (byvoorbeeld argeologiese terreine of geboue van erfenisbelang) en onlangse gebeure soos die brande in Knysna en die historiese stad Wupperthal, het daartoe gelei dat EWK 'n noodaansoekproses ontwikkel het wat voorsiening maak vir 'n korter omkeertyd vir die uitreiking van permitte.

Regs- en wetgewingsomgewing

Erfenis Wes-Kaap werk binne die omgewing wat vereis dat hy vinnig op ontwikkelingsaansoeke reageer, terwyl hy verseker dat hy sy mandaat om erfenishulpbronne te beskerm, nakom. Die afgelope paar jaar het die aansoeke wat by die EWK ingedien is, ingewikkelder geword, en terselfdertyd was daar toenemende druk om toe te sien dat hierdie aansoeke vinnig afgehandel word.

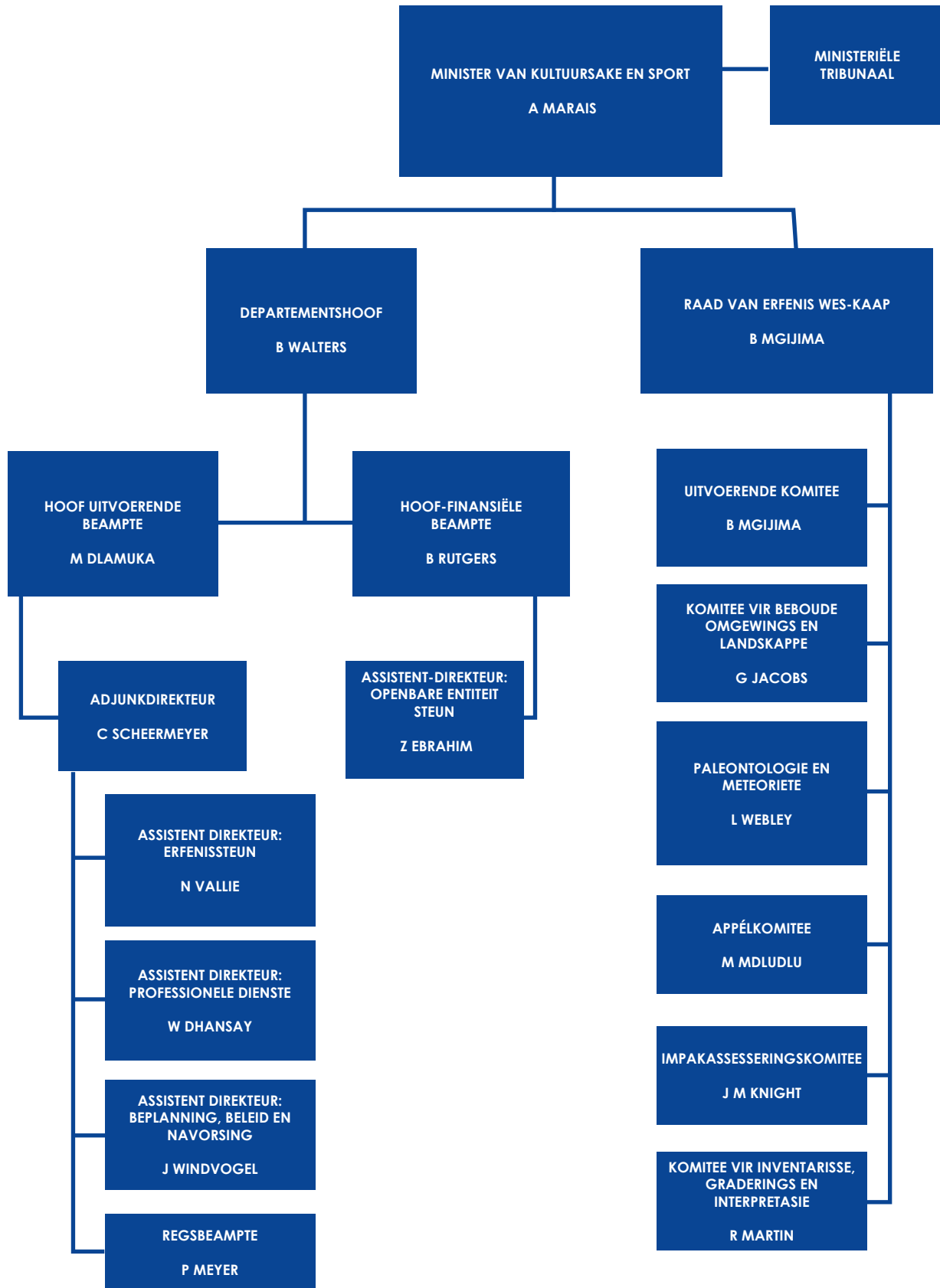
8.2. Interne omgewingsanalise

Die EWK is belas met die identifisering, beskerming, bewaring, bestuur en bevordering van erfenishulpbronne. Weens kapasiteitsbeperkings het EWK hoofsaaklik gefokus op die verwerking van aansoeke en beskerming van erfenishulpbronne as provinsiale erfenisterrein. Die stelsel van afvaardigings is hersien om komitees in staat te stel om ingewikkelde en/of kontroversiële toepassings te oorweeg. Sulke komitees vergader maandeliks, terwyl die VEB weekliks gehou word. Die uitbreiding van delegasies na VEB het die aantal items wat deur BELCom en IACom oorweeg word, beperk, terwyl VEB bykomende sake aangeneem het om die toenemende hoeveelheid aansoeke die hoof te bied.

Die behoefte om plaaslike owerhede te bemagtig om erfenisgebiede en erfenisvoorraadlyste op te stel, het toegeneem. In reaksie hierop het EWK regulasies ontwikkel wat munisipaliteite lei om aan die bepalings van Artikels 30 en 31 van die NHRA te voldoen. EWK sal munisipaliteite bystaan om erfenisgebiede in hul regsgebiede te identifiseer. Die bekendmaking van erfenisgebiede sal sekerheid bied, aangesien die vereistes van Artikel 34 buite hierdie verklaarde Gebiede opgehef kan word.

Daar was gedurende die afgelope jaar 'n bestendige toename in die aantal aansoeke wat deur EWK verwerk is. Alhoewel dit 'n positiewe ontwikkeling is omdat dit 'n aanduiding is van groter betrokkenheid van die publiek om die vereistes van erfeniswetgewing te takel, het dit ook 'n groot beperking op die organisasie geplaas, aangesien die huidige personeelkorps nie voldoende is om die toename in die hoeveelheid werk te kan hanteer nie. In reaksie op die toename in die aantal aansoeke, het EWK instrumente ontwikkel om effektiewer optrede wat betref die verwerking van aansoeke te fasiliteer.

Die EWK se makrostruktuur is soos volg:



DEEL C: MEET ONS PRESTASIE

9. Institusionele prestasie-inligting

9.1. Meting van impak

Impakverklaring	Bewaar en bevorder erfenishulpbronne wat 'n gevoel van sosiale inklusiwiteit opbou en bydra tot ekonomiese groei.
------------------------	---

9.2. Meting van uitkomst

Uitkoms	Uitkoms Aanwyser	Basislyn	Vyfjaar doelwit
Geïntegreerde bestuur van erfenishulpbronne in die Wes-Kaap.	Aantal provinsiale ingrypings om erfenishulpbronne ingevolge die NHRA te beskerm.	116	580
	Aantal inisiatiewe om die bestuur van erfenishulpbronne in die Wes-Kaap te bevorder.	4	20

9.3. Verduideliking van beplande prestasie gedurende die vyf-jaar- beplanningsperiode

Die Provinsiale Strategiese Plan (PSP) se Visie-geïnspireerde prioriteite (VIPs) is 'n stel oorkoepelende strategiese doelstellings vir die Wes-Kaapse regering waarin duidelike uitkomst uiteengesit word wat tydens die mediumtermyn-periode bereik moet word. Hierdie doelstellings weerspieël die behoeftes en prioriteite van die Wes-Kaapse regering en word gebruik om geïntegreerde en verbeterde prestasies in die openbare sektor in die Wes-Kaap aan te wakker.

Die VIP-tabel verskyn op die volgende bladsy:



Erfenis Wes-Kaap dra op die volgende wyse by tot VIPs 2, 3 en 4:

VIPs	EWK Bydrae
2	Skep 'n bemagtigende omgewing wat volhoubare gebruik van erfenishulpbronne bevorder op 'n manier wat ekonomiese groei en toepaslike ontwikkeling bevorder.
3	Erfenis Wes-Kaap werk saam met gemeenskappe om hulle op te voed rakende die waarde van erfenishulpbronne en te bevorder as bydraer tot ekonomiese groei en vaardigheidsontwikkeling.
4	Erfenis Wes-Kaap moedig vennootskappe aan met ander regeringsfere om 'n geïntegreerde benadering tot die bestuur van erfenishulpbronne te verseker. Deur hierdie benadering skakel EWK met munisipaliteite en die relevante owerhede oor ruimtelike ontwikkelings- en beplanningsprosesse.

a. Rede vir uitkomsaanwysers

Erfenis Wes-Kaap se uitkomst is in ooreenstemming met sy wetgewende mandaat ingevolge die Wet op Nasionale Erfenishulpbronne.

b. Stel dit in staat om vyf jaar teikens te bereik

Ondersteuning van die DKES deur middel van sy jaarlikse oordragbetalings en administratiewe ondersteuning aan EWK.

Die opneem van fooie vir die lewering van administratiewe dienste in die verwerking van aansoeke by EWK, om 'n vermindering van fondse te voorkom ten einde voortgesette dienslewering te verseker.

Samewerking met ander regeringsfere, die burgerlike samelewing en die privaatsektor om dienslewering te verbeter.

c. Bydrae van uitkomst tot impak

Die uitkomst dra by tot die bewaring en bevordering van erfenishulpbronne wat 'n gevoel van sosiale inklusiwiteit opbou en tot ekonomiese groei bydra.

10. Sleutelrisiko's

Uitkoms	Sleutelrisiko	Risiko Versagting
Geïntegreerde bestuur van erfenishulpbronne in die Wes-Kaap	Ongemagtigde ontwikkeling	Versterking van EWK Uitreikprogramme
		Aanstelling van erfenis inspekteurs
		Die aanbod van werksinkels of bewusmakingsprogramme met plaaslike munisipaliteite

DEEL D: TEGNIESE AANWYSER BESKRYWINGS

Aanwyser titel	Aantal provinsiale intervensies om erfenis hulpbronne in terme van die NHRA te beskerm.
Definisie	Assessering en beskerming van erfenis hulpbronne op 'n provinsiale vlak
Bron van data	Agendas en notule van vergaderings
Metode van berekening/assessering	Kwantitatiewe (Eenvoudige telling)
Aannames	Doelwit sal soos beplan, bereik word
Opsomming van begunstigdes	Nie van toepassing nie
Ruimtelike transformasie	Nie van toepassing nie
Verslagsiklus	Jaarlikse vordering met die vyf-jaar-teiken
Gewenste prestasie	Beter prestasie word verlang
Aanwyser verantwoordelikheid	Hoof Uitvoerende Beampte

Aanwyser titel	Aantal inisiatiewe om die bestuur van erfenishulpbronne in die Wes-Kaap te bevorder
Definisie	Skakeling met gemeenskappe en ander regeringsstrukture
Bron van data	Registers, agendas en notule van vergaderings
Metode van berekening/assessering	Kwantitatiewe (Eenvoudige telling)
Aannames	Doelwit sal soos beplan, bereik word
Opsomming van begunstigdes	Nie van toepassing nie
Ruimtelike transformasie	Nie van toepassing nie
Verslagsiklus	Jaarlikse vordering met die vyf-jaar-teiken
Gewenste prestasie	Beter prestasie word verlang
Aanwyser verantwoordelikheid	Hoof Uitvoerende Beampte



URhulumente
weNtshona Koloni

ImiCimbi yeNkcubeko
nezemiDlalo



Heritage Western Cape
Erfenis Wes-Kaap
ILifa leMveli leNtshona Koloni

ISicwangiso- qinga

2020/21 - 2024/25

ILIFA LEMVELI LENTSHONA KOLONI

Isicwangciso seQhinga
sama-2020/21 ukuya
kuma-2024/25

Umhla wesi-9 kweyoKwindla wama-2020

Ingxelo yeGunya loLawulo

Ukoma Komhlaba ngenkxaso yengcali ebonelelwe liLifa leMveli leNtshona Koloni, iSebe leMicimbi yeNkcubeko neMidlalo lenze inkqubela phambili ngendlela echanekileyo kwinkqubo yokuchonga, ukonga, ukukhusela nokukhuthaza izixhobo zelifa labo bonke abayibiza njengekhaya labo iNtshona Koloni.

Okwangoku, uyilwayo loLawulo lweMithombo yeLifa leMveli uyenziwa njengoko sicinga ukuba luya kunceda ekwakheni impumelelo, ukusebenza ngokukuko nasekuqinisekiseni ekuchongweni nasekuphathweni kwezixhobo zelifa lemveli. Lo mthetho uYilwayo ucetywayo uza kudala uqinisekiso oluyimfuneko kakhulu malunga nokuba uphuhliso nolondolozo lwelifa lemveli zinokubakho njani ukuze kukhuthazwe ukukhula koqoqosho kunye nokudalwa kwamathuba emisebenzi.

Njengoko iNtshona Kapa inembali etyebileyo nelifa lemveli elahlukileyo ekufuneka ikhuselwe, umsebenzi okwiGumbi lokulwa iMfazwe yezoQoqosho ubonise ukuba kufuneka sibambe umda phakathi kokulondolozwa kwelifa kunye nokukhuthaza indawo kunye noqoqosho ngekamva lanamhlanje. Enye yeendawo eziphantsi koqwalaselo kwigumbi lokulwa iMfazwe yezoQoqosho ngumzi-mveliso wokwakha, obonakale uncipha kunye nomtsalane wemisebenzi kwiminyaka embalwa edlulileyo. Ukuqinisekisa ukuba le bhalansi ivumela ukwakhiwa okutsha kunye nokuphuculwa, ukudala imisebenzi kunye nokukhula koqoqosho kwingingqi yethu. Ngokuqinisekisa ukuba iLifa leMveli eNtshona Koloni linazo izixhobo eziyimfuneko ukuze zisebenze ngokugqibeleleyo kunye neekomiti ezinolwazi, sinokuthi siwubambe umda phakathi kokugcina imbali yethu, ukudala ikamva lethu, kunye nokuncedisa icandelo lezokwakha ukuba likhule ngelixa sisenza indima yethu kwisiCwangciso seQhinga sePhondo. kunye neMibono ePhambili ephefumlelweyo (VIP), ngakumbi kwi-VIP1: Indawo eziKhuselekileyo neziBandakanya abahlali kunye ne-VIP3: Ukuxhobisa abantu.

Esi siCwangciso-qhinga sicacisa ngamanyathelo athatyathweyo ukuvuma, ukuxabisa ubuncwane, ukugcina kunye nokukhulisa iintlobo zezixhobo zelifa lemveli kubantu besixeko nabephandle laseNtshona Koloni ngokuthi kukhuthazwe ngelifa eliphathekayo nelingaphathekiyo, ngakumbi kwabo bebefudula besingelwe phantsi ngaphambili.

Ekuphumezeni iinjongo zabo zesicwangciso, siyakhumbula ukuba sikunye, siza kujongana nemiceli mngeni emininzi. Nangona kunjalo, ndiqinisekile ukuba iBhunga iLifa leMveli leNtshona Koloni lisandula ukuqeshwa kunye neSebe lethu ziya kuqhubeka nokunikezela ngegunya lethu elisemthethweni ukufunqula izinga lobandakanyo kwezintlobo kunye neqhayiya elikhulu kuluntu jikelele, ubuchule, uxanduva, ukuthembeka, ukuvelisa izinto ezintsha nasekuphenduleni.

Ngentsebenziswano evela kuluntu, abasebenzi, abachaphazelekayo bangaphandle namahlakani ocwangciso, esi sicwangciso saphuhliswa ukuze sikhonze njengesikhokelo esisemthethweni seLifa leMveli eNtshona Koloni kunye neSebe kunyaka olandelayo. Ndijonge phambili ekuboneleleni ngenkuthalo kwezikhokelo zepolitiki ezifunekayo zokudibanisa iyantlukwano yeLifa lePhondo.

Anroux Marais

Anroux Marais

Igunya eliLawulayo leLifa leMveli leNtshona Koloni

Ingxelo yeGunya eliNika iNgxelo

KwiPhondo eliineenkubeko ezahluke kangaka njengeNtshona Koloni, kunyanzelekile ukuba umntu achonge le nto ibandakanya abantu bonke. Ilifa lemveli liyaizalisa loo ndima, kuba libonisa iimvelaphi zethu eziyeleleneyo. Oko kubangela amathuba okuba sichume sonke sisizwe. ICandelo leLifa leMveli leNtshona Koloni lidlala indima ephambili ekuqinisekiseni ukubandakanyeka kwabantu baseNtshona Koloni, kwaye oku kubonakala kwiindidi zezixhobo zelifa lemveli ezichongiweyo oko lamiswa icandelo.

Njengokuba isizwe sikhangelela iindlela zokuphinda kwakheke ezoqoqosho, eli bhunga, lichongwe nguMphathiswa weMicimbi yeNkcubeko neMidlalo ukusukela kumhla woku-1 kweyeNkanga 2019 kwisithuba seminyaka emithathu, lamkela ngowona mbulelo ukwanda kwenkxaso ethe yafumaneka kwiSebe lemiCimbi yeNkcubeko neMidlalo nakuNondyebo wePhondo. Ngale nkxaso, siza kujolisa ekuqinisekiseni ukuba izicelo zelifa lemveli zenziwe ngokhawuleza kwaye i-HWC iqhubekela ngokwenza isigunyaziso sayo ngobuchule.

Esi siCwangciso sokuSebenza soNyaka ayiloxwebhu lesiqhelo. Thina sisithatha njengesivumelwano nabantu baseNtshona Koloni. Siza kuzama ukusebenzisana neGosa eliPhetheyo eliyiNtloko kunye nabasebezi beziko ukuqinisekisa ukuba izibophelelo ezenziweyo kweli xwebhu kukhawulelwene nazo. Ngaphezulu, kufuneka kuqinisekiswe ukuba ilifa lemveli labantu baseNtshona Koloni likhuseleke ngokufaneleyo.



Bongani Mgijima

USihlalo weCandelo leLifa leMveli leNtshona Koloni egameni leCandelo leLifa leMveli leNtshona Koloni

Utyikityo lweGosa

Oku kukuqinisekisa ukuba esi siCwangciso soNyaka sokuSebenza:

- Saphuhliswa luLawulo lweLifa leMveli leNtshona Koloni phantsi kwesikhokelo soMphathiswa u-Anroux Marais;
- Sithathela ingqalelo yonke imigaqo nkqubo, umthetho kunye namanye amagunya iLifa leMveli leNtshona Koloni elinoxanduva lwalo; kwaye
- Kubonakalisa ngokuchanekileyo iFuthe, iziPhumo kunye neeMveliso eziyakuthi iLifa leMveli leNtshona Koloni zizame ukuzifezekisa ngaphezulu nje kwexesha elisuka kuma-2020/21 ukuya kuma-2024/25.

Brenda Rutgers
Igosa lezeMali eliyiNtloko



Utyikityo

Mxolisi Dlamuka
IGosa loLawulo eliyiNtloko



Utyikityo

Brent Walters
INtloko yeSebe: iNkcubeko yeMicimbi neMidlalo



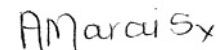
Utyikityo

Bongani Mgijima
Omele iGunya loCwangciso-Mali



Utyikityo

Ivunywe ngu:
Anroux Marais
Igunya eliLawulayo



Utyikityo

IZIQULATHO

ICANDELO A: IGunya lethu	7
1. Igunya lomgaqo-siseko	7
2. Imithetho namagunyaomgaqo-nkgubo.....	8
3. Imigaqo-nkqubo neziCwangciso zeziko kweisithuba seminyaka engaphezulu kwesihlanu	10
4. Imimiselo ePhathelele neNkundla	10
ICANDELO B: Ujoliso Lwethu lwesiCwangciso	13
5. Umbono	13
6. Umnqophiso	13
7. Intsingiselo	13
8. Uhlalutyo lwemeko	13
8.1. Uhlalutyo loBume beNdalo bangaPhandle	14
8.2. Uhlalutyo loBume bangaPhakathi	15
ICANDELO C: Umlinganiselo Wethu wokuSebenza	18
9. Ilinkcukacha zokuSebenza kweZiko	18
9.1. Umlinganiselo weMpembelelo	18
9.2. Umlinganiselo weziPhumo	18
9.3. Ukucaciswa koMsebenzi oCwangcisiweyo kwiSithuba semiNyaka emiHlanu	18
yokuCwangcisa	
10. UMgcipheko oPhambili	19
CANDELO D: Iinkcazelo zeSalathiso seMfundo yoBugcisa (TID)	20

IZIFINYEZO

APM	Inzululwazi ngezakuDala, iMfundo ngeziDalwa zaMandulo neKomiti yeeNkwenkwezi eziQaqambileyo
BELCom	UBume-meko bezoKwakha kunye neKomiti yeMbonakalo-mhlaba
DCAS	ISEbe leNkcubeko yeMicimbi neMidlalo
DEADP	ISEbe leMicimbi yeNdalo nesiCwangciso soPhuhliso
ECM	ULawulo lweMicimbi yoShishino
EPWP	INkqubo yeMisebenzi yoLuntu eyaNdisiweyo
HIMS	INkqubo yoLawulo lweNkcukacha zeLifa leMveli
HOMs	liNtlanganiso zamaGosa eLifa leMveli
HPO	IsiGqubuthelo soKhuselo seLifa leMveli
HWC	ILifa leMveli leNtshona Koloni
IACom	IKomiti yoVavanyo lweMpembelelo
IGIC	liNkcukacha nobuGcisa boNxibelelwano
MEC	ILungu leBhunga loLawulo lwePhondo
MOU	IMemorandam yokuQondana
MTEF	IsiKhokelo seNkcitho-mali yesiQingatha soNyaka
NHRA	UMthetho kaZwelonke weziXhobo zeLifa leMveli, we-1999
PFMA	UMthetho woLawulo lwezeMali yoLuntu, we-1999
PN	ISaziso sePhondo
PSP	IsiCwangciso seQhinga sePhondo
SAHRA	I-Arhente yeziXhobo zeLifa leMveli yoMzantsi Afrika
SOP	UmGangatho weNkqubo eSebenzayoe
VIP	Ukubaluleka okuPhenjelelwa nguMbono

ICandelo A: IGunya Lethu

1. Igunya loMgaqosiseko

Ilifa leMveli leNtshona Koloni lilifumana igunya lalo kula macandelo alandelayo oMgaqosiseko:

Icandelo	Inkcazelo
UMgaqo-siseko weRiphabliki yoMzantsi Afrika, we-1996	
Icandelo lama-24(b)(ii) Ubume	Ilifa leMveli leNtshona Koloni kufuneka, ngokomthetho nangamanye amanyathelo, ulawulo nobeko liso kwinkuthazo yolondolozo lwelifa lwendalo eNtshona Koloni. Oku kungangenziwa ngendlela ezingangqinelaniyo ngawo nawaphina amalungiselelo omQulu wamaLungelo oLuntu.
Icandelo lama-31: Ezenkcubeko, ezenkolo kunye nofundo ngeelwimi zoluntu.	Ilifa leMveli leNtshona Koloni kufuneka luqinisekise ukuba iinkqubo zalo kunye neeprojekthi zikuthathela ingqalelo ukwahlukana ngokwenkcubeko yoluntu lwaseNtshona Koloni.
Icandelo lama-41: Imigaqo yentsebenziswano norhulumente kunye nobudlelwane boorhulumente	Ilifa leMveli leNtshona Koloni kufuneka liyasebenzisana nazo zonke iinkalo zikarhulumente. Ngokumalunga negunya lalo, Ilifa leMveli leNtshona Koloni kufuneka lisebenzisane neSebe leNkcubeko yeMicimbi neMidlalo, i-Arhente yeziXhobo zeLifa leMveli loMzantsi Afrika, noomasipala beNtshona Koloni.
Icandelo lesi-4A: liNdawo eziSebenza ngokuVumelanayo noZwelonke kunye noBuchule boMthetho wePhondo	Ilifa leMveli liyinxalenye 'nemicimbi yenkcubeko' esebenza ngokuvumelana, ngoko ke ilifa leMveli leNtshona Koloni lisebenzisa igunya lalo kwimeko yomthetho kazwelonke nowephondo.
UMgaqo -siseko weNtshona Koloni, uMthetho woku-1 we-1998	
Icandelo lama-70	Umthetho wePhondo kufuneka ubonelele ngokuseka nangenkxaso efanelekileyo, ngokusebenzisa izixhobo ezikhoyo zePhondo, zebhunga lenkcubeko okanye amabhunga asekuhlaleni okanye uluntu lwaseNtshona Koloni, besabelana ngenkcubeko eqhelekileyo nangelifa lemveli leelwimi.
Icandelo lama-81	Ilifa leMveli leNtshona Koloni kufuneka liphumeze imigaqo nkqubo ukuze libenokukhuthaza kwaye ligcine intlalontle yabantu baseNtshona Koloni, kuquka imigaqo nkqubo ejolise ekufezekiseni: <ul style="list-style-type: none"> • Ukukhuselwa kunye nokulondolozwa kwembali yendalo, ezembali yenkcubeko, ubugcisa bezinto zakudala kunye nobugcisa bezinto zokwakha eNtshona Koloni ukuze kuxhamle isizukulwana esikhoyo nesizayo. • Ilifa leMveli eNtshona Koloni kufuneka liphumeze imigaqo nkqubo ethile ukuxhasa la malungiselelo.

2. Imithetho namagunya omgaqo-nkqubo

ILifa leMveli leNtshona Koloni (HWC) lisebenza kumagunya omthetho apho umsebenzi wawo uwonke usekelwe:

- ukukhuthaza ulawulo olululo kuwo onke amanqanaba;
- ukuxhobisa uluntu luphela ukukhulisa nokulondoloza izixhobo zelifa lemveli ukuze babenakho ukudluliselwa kwisizukulwana esilandelayo;
- ukubeka phantsi imigaqo yokulawula ukuphathwa kwezixhobo zelifa lemveli kwiNtshona Koloni iyonke; ukuze
- kuqaliswe inkqubo emanyeneyo yokuchonga, ukuvavanya nokuphatha izixhobo zelifa lemveli kwiphondo ngokumalunga noMthetho weziXhobo zikaZwelonke weLifa leMveli kunye nemimiselo yawo.

ILifa leMveli leNtshona Koloni lisebenza ngaphakathi kwisakhelo salemithetho ilandelayo:

UMthetho kaZwelonke	Isingqiniso	Inkcazelo
Umthetho kaZwelonke weziXhobo zelifa leMveli, we-1999	Umthetho wama-25 we-1999	Ukucebisa uMphathiswa kuphunyezo loMthetho. ILifa leMveli leNtshona Koloni likwanoxanduva lokusungula iinkqubo neendlela zokuphumeza imigqaliselo yoMthetho.
Umthetho woLawulo lwezeMali yoLuntu, we-1999	Umthetho woku-1 we-1999	ILifa leMveli leNtshona Koloni, njengequmrhu loluntu kufuneka usungule iinkqubo zolawulo olululo oluhambelana nemigaqo yoMthetho.
Umthetho wokukhuthaza uFikelelo kwii-Nkcukacha, we-2000	Umthetho wesi-2 wama-2000	Lo Mthetho unika impumelelo kwilungelo lokufikelela kwiirekhodi ezigcinwe ngurhulumente, amaziko karhulumente namaqumrhu abucala. Phakathi kwezinye izinto, iLifa leMveli leNtshona Koloni kwaye naliphi na iqumrhu likarhulumente nelabucala kufuneka: <ul style="list-style-type: none"> • aqulunqe incwadana echazela amalungu oluntu ukuba sifakwa njani na isicelo sofikelelo kwiinkcukacha ezigcinwe liqumrhu; lize • lichonge igosa leenkucukacha ukuze liqwalasele izicelo zofikelelo kwiinkcukacha ezigcinwe liqumrhu.
UkuKhuthazwa koLawulo loBulungisa, lwama-2000	Umthetho wesi-3 wama-2000	Lo Mthetho: <ul style="list-style-type: none"> • ubeka imimiselo nezikhokelo emazilandelwe ngabalawuli xa besenza izigqibo; • ufuna abalawuli bazise abantu malunga namalungelo abo ukuze bahlole okanye babhene nangelungelo labo lokubuza izizathu; • ufuna abalawuli banike izizathu ngokwezigqibo zabo; ukuze • unika amalungu oluntu ilungelo lokucela umngeni kwizigqibo zabalawuli enkundleni.

UMthetho kaZwelonke	Isingqiniso	Inkcazelo
Umthetho woKhuselo lweenkcukacha zoBuqu, wama-2013	Umthetho wesi-4 wama-2013	Lo Mthetho ubeka uxanduva kumaziko ukuqinisekisa oku kulandelayo: <ul style="list-style-type: none"> • Ukukhuthaza ukhuseleko lweenkcukacha zobuqu eziqhutywe ngamaqumrhu oluntu nawabucala; • Ukwazisa ngeemeko ezithile ukuze kusungulwe okuncinane okufunekayo ukuze kuqhutywe ngeenkcukacha zobuqu. Njengoko iLifa leMveli leNtshona Koloni liqokelela iinkcukacha zobuqu xa kusenziwa izicelo zoMthetho wePOPI ekuza kufuneka uthotyelwe.
Uwiso-Mthetho wePhondo	Isingqiniso	Inkcazelo
ImiMiselo yoLawulo lweziXhobo zeLifa leMveli leNtshona Koloni, yama- 2002	i-PN yama-336 yama-25 kweye-Dwarha wama-2002	Le mimiselo ipapashwe ngu-MEC onoxanduva lobugcisa nenkcubeko ngamaxwebhu asungulwe iLifa leMveli leNtshona Koloni ibonelela ngawona magunya awo abalulekileyo phakathi kwiphondo kwaye abonakalisa iinkqubo ezininzi.
ImiMiselo yoLawulo lweziXhobo zeLifa leMveli leNtshona Koloni, yama-2003	i-PN yama-29 kweyeThupha wama-2003	Le mimiselo ipapashelwe ukubonisa iinkqubo zokwenza izicelo ezininzi kwiLifa leMveli leNtshona Koloni. (Imimiselo epapashwe ngolo mhla ukwinguqulelo yesiNgesi)
ImiMiselo yoLawulo lweziXhobo zeLifa leMveli leNtshona Koloni, wama-2003	i-PN yama-212 ye-10 kweyeNkanga wama-2004	Le mimiselo ipapashelwe ukubonisa iinkqubo zokwenza izicelo ezininzi kwiLifa leMveli leNtshona Koloni. (Imimiselo epapashwe ngolo mhla ikwinguqulelo yesiBhulu nesiXhosa)
Imimiselo (iLifa leMveli leNtshona Koloni) kwinkqubo yokupapashwa kweengxelo zomgaqo-nkqubo jikelele kunye nezicwangciso zolawulo lolondolozo, wama-2015	i-PN yama-7497/2015 kweyoMsintsi wama-2015	Le mimiselo ipapashwe iBhunga leLifa leMveli leNtshona Koloni ebonisa inkqubo efunekayo yokupapasha neyokwamkela iingxelo zoMgaqo-nkqubo kunye nezicwangciso zoLawulo loLondolozo.

3. Imigaqo-nkqubo neziCwangciso zeziko kwisithuba seminyaka engaphezulu kwisihlanu

Umgaqo-nkqubo	Inkcazelo
Imigaqo-nkqubo kaZwelonke	
Iphepha leNgcaciso loMgaqo-nkqubo kubuGcisa, iNkcubeko neLifa leMveli (le-1996)	Olu xwebhu lunikela ngesakhelo somgaqo-nkqubo kazwelonke nowephondo kubugcisa, inkcubeko, ilifa lemveli, nethala neenkonzozo zendawo yolondolozo.
Imigaqo nkqubo yeLifa leMveli leNtshona Koloni	
Incwadana yeLifa leMveli leNtshona Koloni yomhla wama-20 kweyoMsintsi wama-2013 njengoko ihlaziyiwe ngowama-2017.	Incwadana iqulathe yonke imigaqo-nkqubo, iinkqubo, izikhokelo kunye nemimiselo yombutho. Iyahlaziya rhoqo xa iBhunga liwuvumile umgaqo-nkqubo omtsha okanye kwenziwe izilungiso kumgaqo-nkqubo okhoyo.

4. Imimiselo ePhathelele neNkundla

Ityala leNkundla	Isingqiniso	Impembelelo kwi-HWC
<i>i-Qualidental Laboratories iphikisana neLifa leMveli leNtshona Koloni [lama-2007] SCA 170 (RSA)</i>	INkundla ePhezulu yesiBheno inombolo yetyala 647/06	Esi sigwebo singqina amandla aboniswe u-MEC neLifa leMveli leNtshona Koloni ukunyanzelisa iimfuneko kuphuhliso ngokumalunga necandelo lama-48 loMthetho kaZwelonke weziXhobo zeLifa leMveli, we-1999.
<i>ii-Top Performers (Pty) Ltd ziphikisana noMphathiswa weNkcubeko yeMicimbi noLonwabo</i>	INkundla ePhakamileyo yeNtshona Koloni inombolo yetyala 5591/05	Esi sigwebo sinempembelelo enamandla kwiinkqubo zesigwebo senkundla yamatyala echongwe ngu-MEC ngokumalunga necandelo lama-49 loMthetho kaZwelonke weLifa leMveli, we-1999, ofundwa neMimiselo ye-12 yePN yama-336 wama-2003. I-DCAS no-MEC zithathe amanyathelo olungiso ukuqinisekisa ngeenkqubo zolawulo ezinobulungisa nokwenza amalungiselelo okwamkela ubungqina obutsha kwirekhodi lenkundla yamatyala, kwanokuthobelana okungcono nemimiselo yesigwebo esiqhelekileyo ngokumalunga ne-audi alteram partem maxim.

Ityala leNkundla	Isingqinisiso	Impembelelo kwi-HWC
<p><i>i-Willows Properties (Pty) Ltd iphikisana noMphathiswa weNkcubeko yeMicimbi neMidlalo</i></p>	<p>INkundla ePhakamileyo yeNtshona Koloni inom-bolo yetyala 13521/08</p>	<p>Isicelo esifakwe ngokungxamisekileyo kwiNkundla ePhakamileyo ukunyanzelisa u-MEC ukuba athathe isigqibo okanye, kungenjalo, ukuba akhuphe iRekhodi yesiGqibo ngokuphathelele nesibheno esifakwe no-MEC ngokumalunga necandelo lama-49 soMthetho kaZwelonke weLifa leMveli, we-1999, ufundwe nommiselo we-12(7) we-PN 336 wama-2003. Impembelelo yesigwebo kwi-DCAS yeyokuba kufuneka iqinisekise ukuba inkundla yamatyala ikhupha iRekhodi yesiGqibo ngexesha elifanelekileyo. Amanyathelo olungiso aphunyeziwe.</p>
<p><i>i-Waenhuiskrans Arniston Ratepayers Association kunye neNye baphikisana neVerreweide Eiendomsontwikkeling (Edms) Bpk kunye naBanye 1926/2008 [2009] ZAWCHC 181.</i></p>	<p>INkundla ePhakamileyo yeNtshona Koloni inombolo yetyala 1926/2008</p>	<p>INkundla ithatha ingqwalasela yokuba ingaba i-Arhente yeziXhobo zeLifa leMveli yoMzantsi Afrika okanye iLifa leMveli leNtshona Koloni zinolawulo ngokuphathelele kwizisa esele zihloliwe zinikwe izinga yi-SAHRA njengeQondo loku-1 ngokwamacandelo lama-35 nelama-36 oMthetho kaZwelonke weziXhobo zeLifa leMveli, we-1999. INkundla yamatyala yafumanisa ukuba, kwiimeko ezinjalo, iSAHRA inolawulo lobulungisa. Imiphumela yesi sigwebo seDCAS yeyokuba iSebe kufuneka libonelele ngoncedo lomthetho kwiLifa leMveli yeNtshona Koloni ukutolika umthetho, kwaye kufuneka uqinisekise ukuba i-HWC yenza ngokwegunya lomthetho wayo.</p>
<p><i>uPeter Gees uphikisana noMphathiswa weNkcubeko yeMicimbi neMidlalo, iNtshona Koloni, uSihlalo, iNkundla yamaTyala yesiBheno eziMeleyo, iLifa leMveli leNtshona Koloni, iSixeko saseKapa, i-City Bowl Ratepayers; kunye ne-Residents' Association</i></p>	<p>iCandelo leNkundla ePhakamileyo yeNtshona Koloni yoMzantsi Afrika inombolo yetyala 6205/2015</p>	<p>INkundla iqinisekise ukuba ukunyanzelwa kweemfuneko phakathi kweemeko ezithile zoMthetho kaZwelonke weziXhobo zeLifa leMveli, we-1999 kwaye kuyavumelana namalungiselelo ewonke oMthetho. Iimfuneko zinganyanzelwa kwimvume yokudiliza nasiphi na isakhiwo esibudala kangangama-60 eminyaka ngoku-phathalele kwicandelo lama-34(1) loMthetho.</p>

Ityala leNkundla	Isingqinisiso	Impembelelo kwi-HWC
<p><i>iKomiti yeLifa leMveli lezeKhaya yasePiketberg kunye neNye iphikisana neLiebco Vleishandelaars Edms Bpk kunye nabanye (uMmangalelwa wesi-2 weLifa leMvele leNtshona Koloni)</i></p>	<p>iCandelo leNtshona Koloni leNkundla ePhakamileyo yoMzantsi Afrika inombolo yetyala 1103 2016</p>	<p>Isicelo sokuphononongwa kwesigqibo seKomiti eyakhiwe yi-HWC kunye neKomiti yokuma komhlaba (i-BELCom). Imvume yanikezelwa yi-BELCom ukuba idilize isakhiwo kwi-Erf yama-207 ePiketberg. IKomiti yeLifa leMveli yasePiketberg ifake isicelo kwiNkundla ePhakamileyo ukuze iphonononge isigqibo njengoko ibichasene nezibonelelo ze-PAJA. INkundla iqwalasele umgaqo-nkqubo we-HWC wokufuna ukubonisana kuphela namaqumrhu abhalisiweyo olondolozo kwaye yabamba ukuba, njengoko izigqibo zithathiwe zazinamandla okuchaphazela amalungu oluntu ngokubanzi, ukubonwa koluntu ngokubanzi kuyafuneka. Oku kuthetha ukuba i-HWC kufuneka iqinisekise ukuba uthatho-nxaxheba loluntu, ngokwe-PAJA lwenziwa ngaphambi kokuthatha isigqibo ngesicelo.</p>
<p><i>Abahlali baseBo-Kaap neQumrha le- Ratepayers kunye nabanye iphikisana neSixeko saseKapa kunye nabanye</i></p>	<p>iCandelo leNtshona Koloni leNkundla ePhakamileyo yoMzantsi Afrika inombolo yetyala 7031/2017</p>	<p>I-HWC ingenelele kwesi sicelo apho uMbutho woLuntu (oliziko lolondolozo elibhalisiweyo) ufake isicelo ukuze kuphononongwe isigqibo seSixeko saseKapa sokwakha isakhiwo eside esibekwe inxenye yaso ngaphakathi kwe-HPO kunye nomda kwi-Bo-Kaap kunye neRiebeeck Square. INkundla ifumanise ukuba i-S27(18) we-NHRA akanakwandiselwa ayinakwandiswa ukuba ifune imvume ekufuneka ifunyenwe ngumvelisi wesakhiwo esixhapha indawo yelifa lethu. Ifumanise ukuba iSixeko saseKapa sithathe yonke imiba efanelekileyo kwaye asinakuyijonga kwakhona kwaye sibeke ecaleni isigqibo sayo.</p>
<p><i>i-Tower Property Fund Limited iphikisana neLifa leMveli leNtshona Koloni</i></p>	<p>iSebe leNtshona Koloni leNkundla ePhakamileyo yoMzantsi Afrika inombolo yetyala 7000/2018</p>	<p>Isicelo somyalelo wokuphakamisa i-odolo yokumiswa komsebenzi owawukhutshwe yi-HWC ngokunxulumene nomsebenzi wokwakha kwipropathi ekufuphi, ekwakusoyikelwa ukuba ibangela ukonakala kwizixhobo selifa lemveli, isakhiwo secawe ye-III A. INkundla ibambe ukuba i-HWC ibifanele ukuba inike umfaki-sicelo ithuba lokuphendula ngaphambi kokuyalela ukuba kuyekwe umsebenzi.</p>

Icandelo B: Ujolisio Lwethu lwesiCwangciso

5. Umbono

Ubandakanyo, inguqu, ugxilo ebantwini, ulawulo oluzinzileyo lwezixhobo zelifa lemveli leNtshona Koloni.

6. Umnqophiso

ILifa leMveli leNtshona Koloni liqinisekisa kwaye liphumelelisa uqoko ukuqinisekisa nokuphumeza izixhobo ezichongiweyo, ulawulo oluzinzileyo kunye noludibeneyo, ulondolozo kunye nokukhuthaza izixhobo zelifa eziphathekayo nezingaphathekiyo ukuze kubenegalelo kwinguqu nasekwakhiweni kwesizwe.

7. Intsingiselo

UkuKhathalela, ubuChule, ukuThatha uXanduva, ukuThembeka, ukuVelisa iziNto eziNtsha, ukuPhendula, ukuBandakanya kunye nokuHlonipha.

8. Uhlalutyo lwemeko

Ukusukela ekusekweni kwalo kweyeDwarha wama-2002, iLifa leMveli leNtshona Koloni lenze iinkqubo zokulawulwa kwezicelo ezingeniswe kulo ngokumalunga noMthetho kaZwelonke weziXhobo zeLifa leMveli, kwaye ithathelwa ingqalelo njengogunyaziwe wezinto ezililifa lemveli malunga nale ndawo yokusebenza.

Kwiminyaka edlulileyo, umbutho uzamile ukucacisa inani lemiba ephathelele kwindawo yayo enkulu yokusebenza. Ngelixa iphumeze ngempumelelo imithetho ecacileyo yokusebenza kwayo, ngakumbi ngokubhekisele kusetyenziso, i-HWC ilandelela abathunywa abasemagunyeni ukuba bavakalise umdla wokuthatha imisebenzi yolawulo lwezibonelelo zelifa lethu lasekhaya. Iingxoxo ziyaqhuba noomasipala bengingqi ukuseka inkqubo-sikhokelo eza kwenza ukuba inkqubo yokudluliselwa kwemisebenzi iqhubeke.

Eyona nto ibalulekileyo kumagunya endawo yimigaqo ye-s30 ne-s31 ye-NHRA egqitywa yi-HWC, elawula inkqubo yokubonisana noluntu efunekayo ekumiselweni kweerejista zelifa lendawo kunye neendawo zamafa. Ukusekwa kweerejista zelifa lemveli kunye neendawo zethu zelifa lemveli kuyakwenza ukuba kuqinisekise ukuba zeziphi iindawo zoncedo ezidwelisiweyo kunye neendawo ezikhuselweyo ngokusemthethweni kwaye ziya kuvumela ukuphakanyiswa kukhuseleko jikelele lwe-NHRA kwezo ndawo. I-HWC iyaqhubeka nokwakhiwa kobudlelwane bayo bentsebenziswano kunye ne-Arhente yeziXhobo zeLifa leMveli yoMzantsi Afrika (i-SAHRA) ngokweSaziso sokuqondana (i-MOU) ngokubhekisele kulawulo lweendawo ezibaluleke kakhulu kuzwelonke ngaphakathi eNtshona Koloni, kunye neminye imicimbi enika umdla.

Ngexesha leseshoni yayo yesicwangciso seqhinga, i-HWC ichonge oku kulandelayo njengezinto eziphambili ngokubaluleka:

- ukwakha inkqubo yolawulo lwelifa lemveli elisebenzayo elithi lenze abachaphazelekayo kunye noluntu babenakho ukuzithemba kumsebenzi we-HWC.
- ukubhengezwakwezibonelelozelifalemveliezibalulekileyonjengezizazelifalemveliukuze kuboniswe iyantlukwano yephondo kunye nelifa lemveli loluntu olungakhathalelwanga ngaphambili;

- ukuqinisekisa ubudlelwane noomasipala kunye nemibutho yolondolozo ukuqinisekisa ukuthotyelwa kwe-NHRA, ngakumbi ngemibandela ebekiweyo kwiimvume kunye nezinye iirekhodi zezigqibo;
- ukuhambisa iinkqubo zokufikelela eluntwini ngenjongo yokuqaqambisa iziphumo ezinzileyo ezinokubangela ukuba ilifa lemveli libe nakho
- ukusombulula iingxaki zentlalo, ukudala ubandakanyo loluntu kunye nokwakha ubumi obusebenzayo; kwaye
- luphucule ukuqondwa kwexabiso lezixhobo zelifa lemceli ngokusebenzisa imiqondiso echazayo.

8.1. UHlalutyo loBume beNdalo bangaPhandle

Ubume bepolitiki

Ilifa leMveli eNtshona Koloni, nangona ingeyiyo eyopolitiko, ibhunga layo lonyulwa nguMphathiswa ojongene nemicimbi yeNkcubeko eNtshona Koloni. UMphathiswa useka umbutho ngokwemigaqo yeCandelo lama-23 loMthetho weSizwe weZibonelelo zeLifa leMveli. Ixhaswa liSebe leMicimbi yeNkcubeko neMidlalo ngokwenza intlawulo yonyaka yokuhlawula kunye neenkonzozo zenkxaso ezibandakanya abasebenzi, inkonzozo yenkxaso yemali kunye neenkonzozo zokuxhasa ze-IT.

Ubume bezoqoqosho

Imeko yoqoqosho olutsala nzima yelizwe, ibangele ingxaki kwezemali okuchaphazele umsebenzi wequmrhu. Ngakumbi, ulwabiwo lwentlawulo kwiSebe leNkcubeko yeMicimbi neMidlalo (DCAS) ukuya kwiqumrhu liza kuncitshiswa nangaphezulu kwiSikhokelo seNkcitho-mali yeSiqingata soNyaka (i-MTEF). Ngelixa imisebenzi yeziko iqhubeka ngokomyalelo wayo osemthethweni, iyasebenza ngaphakathi kubume bezoqoqosho olufuna ukuba ikhangele eminye imithombo yenkxaso-mali. I-HWC ikwinkqubo yokuphonononga ubume bayo bemirhumo yesicelo ikunye neBhunga layo.

Ubume bentlalo

Umdla woluntu kwilifa lemveli uyaqhubeka usanda kwaye umthetho wamatyala wamva nje ubonakalisa ukuthatha inxaxheba kwabemi kwiinkqubo zolawulo lwelifa le-HWC. I-HWC ikhuthaza abahlali ukuba babhalise njengamaqonga olondolozo ngokweCandelo lama-25 le-NHRA. Oku kuvumela amagqabantshintshi olondolozo ngaphakathi kwinkqubo yokwenza isicelo se-HWC. AmaZiko oLondolozo axhobisa abahlali ukuba babe nelizwi elisebenzayo malunga nokubaluleka kwezixhobo zelifa lemveli ezichongiweyo kwiindawo zabo. I-HWC ipapasha ii-ajenda zayo zemizuzu kunye nemizuzu kwibhlog yayo ukuvumela uluntu lwasekhaya olunomdla ukufikelela kulwazi. Uhlaziyo lwanikezelwa rhoqo ngeveki kwibhlog apho izigqibo zenziwa khona kwiiNtloko zamaGosa aLifa leMveli (HOMs).

Ubume bemfundo yobugcisa

Ukusukela oko i-HWC iphuhlise inkqubo yolawulo leenkukacha kwi-intanethi, kutshanje izibandakanye ne-arhente kazwelonke yezixhobo zelifa lemveli ukudibanisa inkqubo yayo ye-intanethi kunye ne-SAHRA, kwinto ebizwa ngokuba yiNkqubo yoLawulo lweenkukacha zelifa leMveli loMzantsi Afrika (i-SAHRIS). I-SAHRA, njenge-arhente yesizwe, inokugqiba ukuba ingaba iqumrhu linika ingxelo njani kulo malunga nolawulo lwepropathi yesizwe ngokumalunga ne-NHRA. Kucingelwa ukuba ukusetyenziswa kwe-SAHRIS kuya kuvumela ukufikeleleka okukhulu kwe-intanethi kwenkqubo yayo yesicelo kunye negalelo kwiziko leenkukacha lesizwe le-SAHRA.

Ubume bezendalo

Imbalela nemililo yakutsha nje ziye zaqaqambisa inkxalabo malunga nefuthe lokutshintsha kwemozulu kunye nomngcipheko owandayo weentlekele zendalo eNtshona Koloni. Umngcipheko onjalo ubeka umngcipheko kwizixhobo zelifa lemveli (umzekelo iziza zenzululwazi ngezakudala okanye izakhiwo ezibaluleke kakhulu zelifa lemveli) kunye neziganeko zamva nje ezinje ngomlilo wase-Knysna kunye nedolophu eyimbali yase-Wupperthal, ekhokelele ekubeni i-HWC iphuhlise inkqubo yesicelo sexesha likaxakeka evumela ukuba litshintshe ixesha elifutshane lokukhutshwa kwamaphepha mvume.

Ubume bezomthetho nolawulo

Ilifa leMveli leNtshona Koloni lisebenza ngaphakathi kwimeko efuna ukuba likwazi ukuphendula kwizicelo zophuhliso ngokukhawuleza ngelixa liqinisekisa ukuba lenza umsebenzi walo wokukhusela izixhobo zelifa lemveli. Kule minyaka imbalwa idlulileyo, izicelo ezingeniswe kwi-HWC ziye zanobunzima kakhulu, kwangaxeshanye kuye kwakho uxinzelelo olongezelelekileyo lokuqinisekisa ukuba ezi zicelo ziqhutywa ngokukhawuleza.

Ilifa leMveli leNtshona Koloni kufuneka liqinisekise ukuba izigqibo zalo zithathwa kwiintlanganiso ezivulelekileyo kuluntu kwaye kubekho inxaxheba eyaneleyo yoluntu ngokumalunga nemithetho efanelekileyo. Oku kungalulibaziseko olubangela ukuba i-HWC ithathwe njengomqobo kuhlumo lwezooqoqosho eNtshona Koloni. Kucingeleka ukuba ukusetyenziswa kwe-SAHRIS kuza kuncedisa amalungu oluntu ekulandeleleni ukuba kuxa ziphi na izicelo zabo kunye neziphumo zezigqibo ezithathwe ziikomiti.

8.2. Uhlalutyo loBume bangaPhakathi

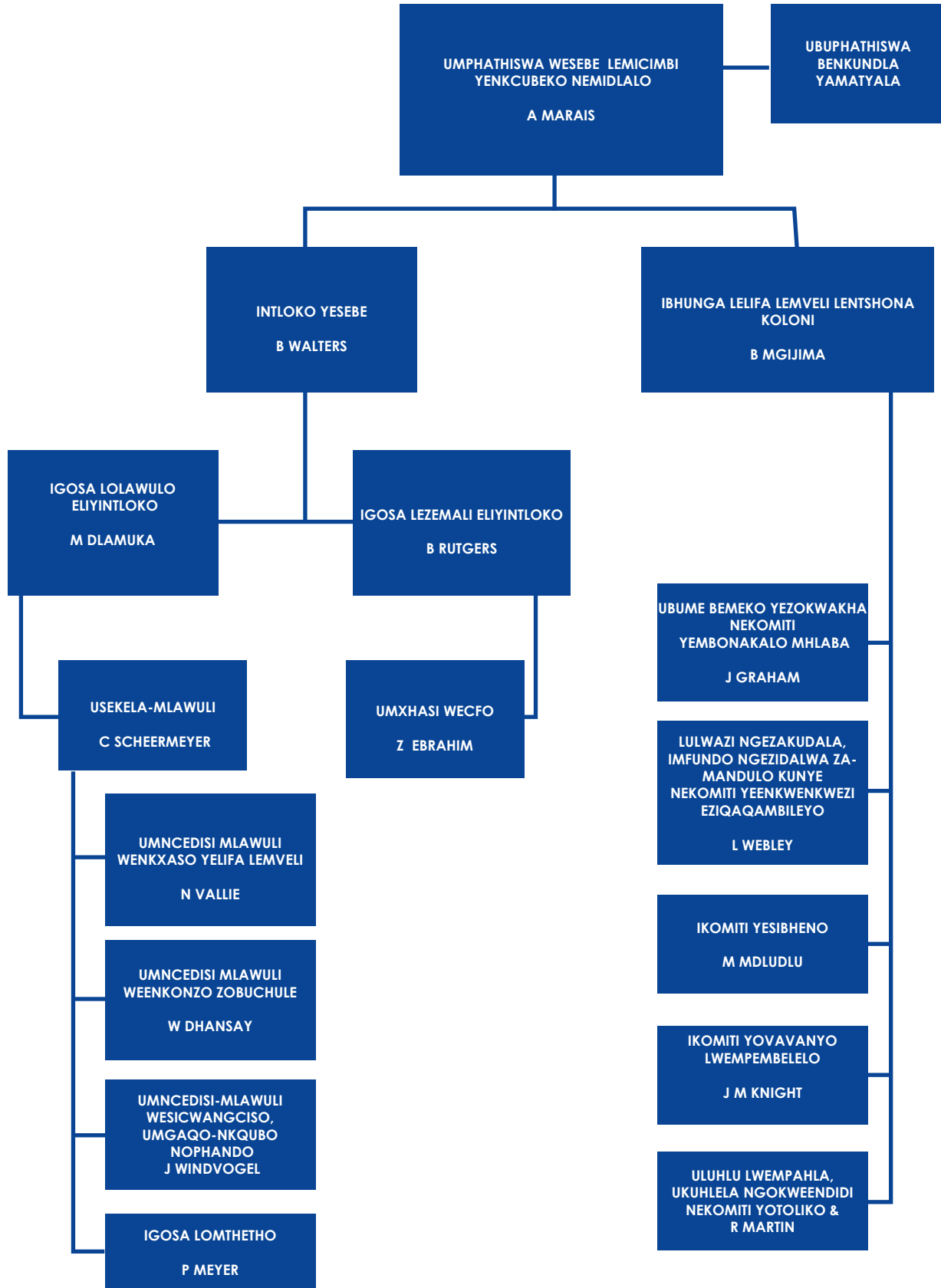
I-HWC inoxanduva lokuchonga, ukhuseleko, ulondolozo, ulawulo kunye nokuxhasa izixhobo zelifa lemveli. Ngenxa yokunqongophala kwezikhundla, i-HWC ijolise ikakhulu ekusetyenzisweni kwezicelo nokhuseleko lwezixhobo zelifa lemveli njengeZiza leLifa leMveli lePhondo (PHS). Inkqubo yokudluliselwa kwamandla iye yahlaziywa ukwenzela ukuba iikomiti zithathele ingqalelo imisebenzi enzima kunye/ okanye ephikisayo. Iikomiti ezinjalo zidibana rhoqo ngenyanga, ngelixa ii-HOM zibanjwa veki nganye. Ukwanda kokudluliselwa kwabathunywa kwii-HOMs kulinganisele inani lezinto eziqwalaselwa yi-BELCom kunye

ne-IACom, ngelixa ii-HOMs ziye zathatha amatyala amaninzi ukuze zikwazi ukumelana nomthamo owandayo wezicelo.

Isidingo sokuxhobisa abasemagunyeni ekusekeni iiNdawo zeLifa leMveli kunye noLondolozo lweLifa leMveli. Ukuphendula koku, i-HWC iphuhlise imigaqo ekhokela oomasipala ukuba bahambelane nezibonelelo zeCandelo lama-30 kunye nama-31 le-NHRA. I-HWC iza kube incedisana noomasipala ukuze bachonge iiNdawo zeLifa leMveli kwiingingqi zabo zolawulo. Ukupapashwa kweeNdawo zeLifa leMveli kuza kubonelela ngokuqinisekileyo njengoko iimfuno zeCandelo lama-34 zinokuphakanyiswa ngaphandle kwezi ndawo zichaziweyo.

Kwiminyaka yakutshanje kuye kwakho ulonyuso oluqinisekileyo kwinani lezicelo ezenziweyo ngu-HWC. Ngelixa olu luphuhliso oluqinisekileyo njengoko lubonisa ukuphendula okukhulu ukusuka kuluntu ukuya kwiimfuno zomthetho welifa lemveli, ubeke nezithintelo kulo mbutho, njengoko icandelo elikhoyo labasebenzi alonelanga ukujongana nokunyuka kwenani lomsebenzi. Ukuphendula ukwanda kwenani lezicelo, i-HWC ivelise izixhobo zokuncedisa ekuphenduleni kwezicelo.

Ubume be-HWC bukhulu ngolu hlobo lulandelayo:



ICandelo C: Umlinganiselo Wethu wokuSebenza

9. linkcukachazokuSebenzakweZiko

9.1. UmlinganiseloweMpembelelo

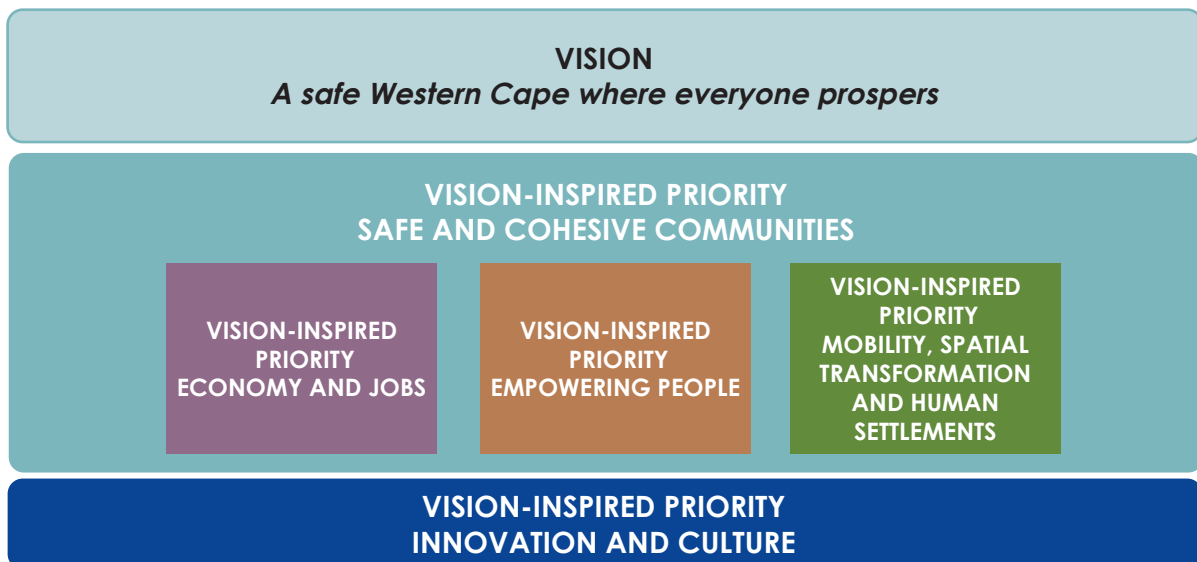
Ingxelongo mpembelelo	Londoloza kwaye uxhase izixhobo zelifa lemveli ezakha ukuqonda, ubandakanyo lwentlalo kunye nolunegalelo ekukhuleni koqoqosho.
------------------------------	--

9.2. Umlinganiselo weziPhumo

Iziphumo	Isalathiso sesiPhumo	Isiseko	Ekujoliswe kuko kwiminyaka emihlanu
Ulawulo oluhlanganisiweyo lwezixhobo zelifa lemveli eNtshona Koloni.	Inani longenelelo lwephondo ekukhusele-ni izixhobo zelifa lemveli ngokukmalunga ne-NHRA	116	580
	Inani lamanyathelo enziweyo okukhuthaza ulawulo lwezixhobo zelifa lemveli eNtshona Koloni	4	20

9.3. Ukucaciswa koMsebenzi oCwangcisiweyo kwiSithuba semiNyaka emiHlanu yokuCwangcisa

IsiCwangciso seQhinga sePhondo (PSP) okuPhambili kuPhenjelelwe nguMbono (VIPs) yiseti yeenjongo zesicwangciso esigcweleyo sikaRhulumente waseNtshona Koloni, sibeka ngokucacileyo iziphumo emazifizekiswa ngexesha lesiqingatha esiphakathi sonyaka. Ezi njongo zibonisa izidingo nokuphambili kuRhulumente waseNtshona Koloni kwaye zisetyenzisela ukuqhuba umsebenzi ohlanganisiweyo nophuculiweyo kulo lonke icandelo likaRhulumente weNtshona Koloni. Ezi VIPs zilandelayo zamkelwe yiNtshona Koloni:



Ilifa leMveli leNtshona Koloni linegalelo kweziVIPs eyesi-2, eyesi-3 kunye neyesi-4 ngale ndlela ilandelayo:

iPSP VIPs	Igalelo le-HWC
2	Idala ukubanako kwemeko ukuba ikhuthaze ukusetyenziswa okuzinzileyo kwezixhobo zelifa lemveli ngendlela apho ethi ikhuthaze ukukhula koqoqosho kunye nophuhliso olufanelekileyo.
3	Ilifa leMveli eNtshona Koloni lisebenzisana noluntu ukufundisa nokukhuthaza ixabiso lezixhobo zelifa lemveli njengegalelo kuhlumo loqoqosho nophuhliso lwezakhono.
4	Ilifa leMveli leNtshona Koloni likhuthaza ubuhlakani namanye amasebe oburhulumente ukuze kuqinisekise indlela emanyanisiweyo yolawulo lwezixhobo zelifa lemveli. Ngale ndlela, i-HWC idibana noomasipala kunye nabasemagunyeni abafanelekileyo malunga nophuhliso lomhlaba kunye neenkqubo zocwangciso.

a. Isizathu sezalathisi zeziphumo

IziPhumo zeLifa leMveli leNtshona Koloni zilungelelaniswe negunya lalo lomthetho ngokumalunga noMthetho kaZwelonke weziXhobo zelifa lemveli.

b. Abaphumezi bokufezekisa okujoliswe kuko kwiminyaka emihlanu

Inxaso evela kwi-DCAS ngodluliso lwentlawulo yayo yonyaka kunye nenxaso yolawulo kwi-HWC.

Ukuthathwa kwemirhumo yokunikezelwa kweenkonzo zolawulo ekuqhutyweni kwezicelo kwi-HWC, ukuthintela ukuncitshiswa kwemali ukuze kuqinisekise ngokuhanjiswa kweenkonzo.

Intsebenziswano namanye amasebe karhulumente, uluntu, kunye necandelo labucala ukuphucula ukuhanjiswa kweenkonzo.

c. Igalelo leziphumo zempembelelo

Iziphumo zinegalelo kulondolozo nasekuxhaseni izixhobo zelifa lemveli ezakha ukuqondwa kobandakanyo lwentlalo kunye negalelo kuhlumo loqoqosho.

10. UMngcipheko oPhambili

Iziphumo	UMngcipheko oPhambili	Ukudanjiswa koMngcipheko
Ulawulo oluhlanganisiweyo lwezixhobo zelifa lemveli eNtshona Koloni.	Uphuhliso olungagunyaziswanga	Ukomelezwa kweenkqubo zokufikelela kwi-HWC
		Ukuqeshwa kwabahloli belifa lemveli
		Ukubamba amacweyo onyanzeliso okanye iinkqubo zokwazisa ngokusebenza noomasipala bezekhaya

Icandelo D: IiNkcazelo zeSalathiso seMfundo yoBugcisa (TID)

Igama lesalathiso	Inani lamangenelelo ephondo ukukhusela izixhobo zelifa lemveli ngokumalunga ne-NHRA
Inkcazelo	Uvavanyo nokhuselo lwezixhobo zelifa lemveli zeqondo lephondo
Imvelaphi yedatha	Ii-Ajenda nemizuzu yeentlanganiso
Indlela yokuphonononga/ yokuvavanya	Ubungakanani (Ubalo oluLula)
Iingcinga	Okujoliswe kuko kuyakufezekiswa njengoko bekucwangcisiwe
Ukungavisisani kwabaxhamli	Ayingeni
Inguqu yendawo	Ayingeni
Umjikelo wokunika ingxelo	Inkqubela yonyaka ehambisana nokujoliswe kuko kwiminyaka emihlanu
Umsebenzi onqwenelekayo	Ukusebenza ngaphezulu kuyanqweneleka
Uxanduva lwesalathisi	IGosa loLawulo eliyiNtloko

Igama lesalathiso	Inani lamanyathelo okukhuthaza ulawulo lwezixhobo zelifa lemveli eNtshona Koloni
Inkcazelo	Intsebenziswano noluntu kunye namanye amasebe karhulumente
Imvelaphi yedatha	Iirejista, ii-ajenda kunye nemizuzu yeentlanganiso
Indlela yokuphonononga/ yokuvavanya	Ubungakanani (Ubalo oluLula)
Iingcinga	Okujoliswe kuko kuza kufezekiswa njengoko bekucwangcisiwe
Ukungavisisani kwabaxhamli	Ayingeni
Inguqu yendawo	Ayingeni
Umjikelo wokunika ingxelo	Inkqubela yonyaka ehambisana nokujoliswe kuko kwiminyaka emihlanu
Umsebenzi onqwenelekayo	Ukusebenza ngaphezulu kuyanqweneleka
Uxanduva lwesalathisi	IGosa loLawulo eliyiNtloko



Western Cape
Government

Cultural Affairs and Sport



Heritage Western Cape
Erfenis Wes-Kaap

ILifa leMveli leNtshona Koloni

Strategic Plan

2020/21 - 2024/25

HERITAGE WESTERN CAPE

Strategic Plan for 2020/21 – 2024/25

9 March 2020

Executive Authority Statement

Through the expert support provided by Heritage Western Cape, the Department of Cultural Affairs and Sport has made consistent progress in the systematic identification, conservation, protection and promotion of heritage resources for all who call the Western Cape home.

Currently, a provincial Heritage Resources Management Bill is being drafted which we envision will assist in creating greater efficiency, efficacy and certainty in the identification and management of the province's significant heritage resources. The proposed Bill will create the much needed certainty in as far as how development and heritage conservation can co-exist in order to promote economic growth and job creation.

As the Western Cape has a rich history and diverse heritage which must be protected, the work in the Economic War Room has shown that we need to strike a balance between preserving this heritage, and encouraging a region and an economy with a modern future. One of the areas under consideration in the Economic War Room is the construction industry, which has seen a slowdown and job attrition in the past few years. Ensuring this balance would allow vital new builds and upgrades, creating jobs and economic growth in our region. By ensuring Heritage Western Cape has the resources needed to function optimally with well-informed committees, we can strike that delicate balance between preserving our history, creating our future, and assisting the construction industry to grow while fulfilling our key role in the Provincial Strategic Plan and the Vision Inspired Priorities (VIP), particularly around VIP1: Safe and Inclusive Communities and VIP3: Empowering People.

This Strategic Plan details the measures put in place to acknowledge, treasure, maintain and nurture the diverse urban and rural heritage resources of the people of the Western Cape by promoting both tangible and intangible heritage, particularly amongst the previously marginalised.

In achieving their strategic objectives, we are mindful that together, we will be confronted with various challenges. However, I am confident that the newly appointed Heritage Western Cape Council and our Department will continue to deliver on our legal mandate to increase social inclusion and civic pride with great care, competence, accountability, integrity, innovation and responsiveness.

Through collaborative inputs from communities, staff, external stakeholders and strategic partners, this plan was developed to serve as an official guideline for Heritage Western Cape and the Department for the year ahead. I look forward to proactively providing the political direction needed to unite the diversity of the province's heritage landscape.

Anroux Marais

Anroux Marais

Executive Authority of Heritage Western Cape

Accounting Officer Statement

In a province that is as diverse as the Western Cape, it is crucial that one finds the thread that pulls people together. Heritage fulfils that role as it easily demonstrates how we have so many shared histories, thus enabling opportunities for us to prosper together as one nation. Heritage Western Cape is among the key drivers of social inclusion in the Western Cape and this is evident in the nature of heritage resources it has identified since its establishment.

As the country is looking at ways of rebuilding its economy, this council, appointed by the Minister of Cultural Affairs and Sport with effect from 1 November 2019 for a period of three years, welcomes with greatest appreciation the increasing support that has been provided to it by the Department of Cultural Affairs and Sport and the Provincial Treasury. Through this support, we will strive to ensure that heritage applications are processes speedily and HWC continues to execute its mandate with agility.

This Annual Performance Plan is not just an ordinary document, but we regard it as a contract with the people of the Western Cape. We will endeavour to work with the Chief Executive Officer and staff of the entity to ensure that commitments made in this document are met and the heritage of the people of the Western Cape is adequately protected.



Bongani Mjijima

Chairperson of Heritage Western Cape

Official Sign-Off

It is hereby certified that this Annual Performance Plan:

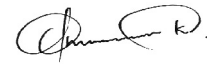
- Was developed by the management of the Heritage Western Cape under the guidance of Minister Anroux Marais;
- Takes into account all the relevant policies, legislation and other mandates for which Heritage Western Cape is responsible; and
- Accurately reflects the Impact, Outcomes and Outputs which Heritage Western Cape will endeavour to achieve over the period 2020/21-2024/25.

Brenda Rutgers
Chief Financial Officer



Signature

Mxolisi Dlamuka
Chief Executive Officer



Signature

Brent Walters
Head of Department: Cultural Affairs and Sport



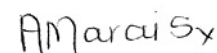
Signature

Bongani Mjijima
Chairperson of Council



Signature

Approved by:
Anroux Marais
Executive Authority



Signature

CONTENTS

Part A: Our Mandate	7
1. Constitutional mandate	7
2. Legislative and policy mandates	8
3. Institutional Policies and Strategies over the five-year planning period	10
4. Relevant Court Rulings	10
Part B: Our Strategic Focus	13
5. Vision	13
6. Mission	13
7. Values	13
8. Situational Analysis	13
8.1. External Environment Analysis	14
8.2. Internal Environment Analysis	15
Part C: Measuring Our Performance	17
9. Institutional Performance Information	17
9.1. Measuring the Impact	17
9.2. Measuring Outcomes	17
9.3. Explanation of Planned Performance over the Five-Year Planning Period	17
10. Key Risks	18
Part D: Technical Indicator Descriptions (TID)	19

ACRONYMS

APM	Archaeology, Palaeontology and Meteorites Committee
BELCom	Built Environment and Landscapes Committee
DCAS	Department of Cultural Affairs and Sport
DEADP	Department of Environmental Affairs and Development Planning
ECM	Enterprise Content Management
EPWP	Expanded Public Works Programme
HIMS	Heritage Information Management System
HOMs	Heritage Officers Meetings
HPO	Heritage Protection Overlay
HWC	Heritage Western Cape
IACom	Impact Assessment Committee
IGIC	Information and Communication Technology
MEC	Member of the Provincial Executive Council
MOU	Memorandum of Understanding
MTEF	Medium-Term Expenditure Framework
NHRA	National Heritage Resources Act, 1999
PFMA	Public Finance Management Act, 1999
PN	Provincial Notice
PSP	Provincial Strategic Plan
SAHRA	South African Heritage Resources Agency
SOP	Standard Operational Procedure
VIP	Vision Inspired Priorities

Part A: Our Mandate

1. Constitutional mandate

Heritage Western Cape derives its mandate from the following sections of the Constitution:

Section	Description
Constitution of the Republic of South Africa, 1996	
Section 24(b)(ii) Environment	Heritage Western Cape must, by legislative and other measures, regulate and monitor the promotion of conservation of the heritage environment in the Western Cape. This may not be exercised in a manner inconsistent with any provision of the Bill of Rights.
Section 31: Cultural, religious and linguistic communities	Heritage Western Cape must ensure that its programmes and projects take into account the cultural diversity of the population of the Western Cape.
Section 41: Principles of co-operative government and intergovernmental relations	Heritage Western Cape cooperates with all spheres of government. In terms of its mandates Heritage Western Cape works in close cooperation with the Department of Cultural Affairs and Sport, the South African Heritage Resources Agency and municipalities in the Western Cape.
Schedule 4A: Functional Areas of Concurrent National and Provincial Legislative Competence	Heritage forms part of 'cultural matters' which are concurrent functions, thus Heritage Western Cape exercises its mandate in the context of both national and provincial legislative environments.
Constitution of the Western Cape, 1997, Act 1 of 1998	
Section 70	Provincial legislation must provide for the establishment and reasonable funding, within the Province's available resources, of a cultural council or councils for a community or communities in the Western Cape, sharing a common cultural and language heritage.
Section 81	Heritage Western Cape must implement policies to actively promote and maintain the welfare of the people of the Western Cape, including policies aimed at achieving: <ul style="list-style-type: none"> • The protection and conservation of the natural historical, cultural historical, archaeological and architectural heritage of the Western Cape for the benefit of the present and future generations. • Heritage Western Cape must implement specific policies to support these provisions.

2. Legislative and policy mandates

Heritage Western Cape (HWC) operates within the legislative mandates on which its overall functioning is based:

- to promote good governance at all levels;
- to empower civil society to nurture and conserve the heritage resources so that they may be bequeathed to future generations;
- to lay down general principles for governing heritage resources management throughout the Western Cape; and
- to introduce an integrated system for the identification, assessment and management of heritage resources in the province in terms of the National Heritage Resources Act and its regulations.

Heritage Western Cape's operates within the framework of the following legislations:

National Legislation	Reference	Description
The National Heritage Resources Act, 1999	Act 25 of 1999	To advise the Minister on the implementation of the Act. Heritage Western Cape also has a responsibility to establish systems and procedures to execute the prescripts of the Act.
Public Finance Management Act, 1999	Act 1 of 1999	Heritage Western Cape, as a public entity must establish sound financial management systems in compliance with the prescripts of the Act.
Promotion of Access to Information Act, 2000	Act 2 of 2000	This Act gives effect to the right to have access to records held by the state, government institutions and private bodies. Among other things, Heritage Western Cape and every other public and private body must: <ul style="list-style-type: none"> • compile a manual that explains to members of the public how to lodge an application for access to information that the body holds; and • appoints an information officer to consider requests for access to information held by the body.
Promotion of Administrative Justice, 2000	Act 3 of 2000	This Act: <ul style="list-style-type: none"> • sets out the rules and guidelines that administrators must follow when making decisions; • requires administrators to inform people about their right to review or appeal and their right to request reasons; • requires administrators to give reasons for their decisions; and • gives members of the public the right to challenge the decisions of administrators in court.

National Legislation	Reference	Description
Protection of Personal Information Act, 2013	Act 4 of 2013	<p>This Act places a responsibility on institutions to ensure the following:</p> <ul style="list-style-type: none"> • To promote the protection of personal information processed by public and private bodies; • To introduce certain conditions so as to establish minimum requirements for the processing of personal information. <p>As Heritage Western Cape collects personal information in the processing of applications the POPI Act will need to be complied with.</p>
Provincial Legislation	Reference	Description
Western Cape Heritage Resource Management Regulations, 2002	PN 336 of 25 October 2002	These regulations published by the MEC responsible for arts and culture are the founding document of Heritage Western Cape providing its essential mandate within the province and setting out various procedures.
Western Cape Heritage Resource Management Regulations, 2003	PN 298 of 29 August 2003	These regulations published to set out procedures for the making of various applications to Heritage Western Cape. (The regulations published on this date are the English version)
Western Cape Heritage Resource Management Regulations, 2003	PN 212 of 10 November 2004	These regulations published to set out procedures for the making of various applications to Heritage Western Cape. (The regulations published on this date are the Afrikaans and Xhosa versions)
Regulations (Heritage Western Cape) on the process for publication of statements of general policy and conservation management plans, 2015	PN 7497/2015 September 2015	These regulations published by the Council of Heritage Western Cape set out the procedure required to publish and adopt Statements of General Policy and Conservation Management Plans

3. Institutional Policies and Strategies over the five-year planning period

Policy	Description
National policies	
National White Paper on Arts, Culture and Heritage (1996)	This document provides a framework for national and provincial policy on arts, culture, heritage, and library and archive services.
Policies of Heritage Western Cape	
Heritage Western Cape Handbook 20 September 2013 as updated in 2017.	The Handbook contains all the policies, procedures, guidelines and rules of the organisation. It is updated on a regular basis once Council approves a new policy or makes an amendment to the existing one.

4. Relevant Court Rulings

Court Case	Reference	Impact on HWC
<i>Qualidental Laboratories v Heritage Western Cape [2007] SCA 170 (RSA)</i>	Supreme Court of Appeal case no. 647/06	This judgment confirmed the powers conferred on the MEC and Heritage Western Cape to impose conditions on a development in terms of section 48 of the National Heritage Resources Act, 1999.
<i>Top Performers (Pty) Ltd v Minister of Cultural Affairs and Recreation</i>	Western Cape High Court case no. 5591/05	This judgment had a profound impact on the appeal processes of the tribunals appointed by the MEC in terms of section 49 of the National Heritage Resources Act, 1999, read with Regulation 12 of PN 336 of 2003. DCAS and the MEC took corrective steps to ensure fair administrative processes and make provision for the admission of new evidence into the record of a tribunal process, as well as better compliance with the rules of natural justice in terms of the <i>audi alteram partem maxim</i> .

Court Case	Reference	Impact on HWC
<i>Willows Properties (Pty) Ltd v Minister of Cultural Affairs and Sport</i>	Western Cape High Court case no. 13521/08	The applicant filed an urgent application in the High Court to compel the MEC to make a decision or, alternatively, to issue the Record of Decision in respect of an appeal lodged with the MEC in terms of section 49 of the National Heritage Resources Act, 1999, read with regulation 12(7) of PN 336 of 2003. The impact of the judgment on DCAS is that it must ensure that tribunals issue Records of Decision in good time. Corrective measures have been implemented.
<i>Waenhuiskrans Arniston Ratepayers Association and Another v Verreweide Eiendomsontwikkeling (Edms) Bpk and Others</i> 1926/2008 [2009] ZAWCHC 181.	Western Cape High Court case no. 1926/2008	The Court considered whether the South African Heritage Resources Agency or Heritage Western Cape have jurisdiction in respect of sites that have been graded by SAHRA as Grade 1 sites in terms of sections 35 and 36 of the National Heritage Resources Act, 1999. The Court found that, in such cases, SAHRA has jurisdiction. The implication of this judgment for DCAS is that the Department must provide legal assistance to Heritage Western Cape to interpret the legislation, and it must ensure that HWC acts within its legal mandate.
<i>Peter Gees v the Provincial Minister of Cultural Affairs and Sport, Western Cape, the Chairperson, Independent Appeal Tribunal, Heritage Western Cape, the City of Cape Town, City Bowl Ratepayers; & Residents' Association</i>	Western Cape Division of the High Court of South Africa no. 6205/2015	The Court has confirmed that the imposition of conditions is within the parameters of the National Heritage Resources Act, 1999 and are consistent with the overall scheme of the Act. Conditions can be imposed in a permit for demolition of an existing structure older than 60 years in terms of section 34(1) of the Act.

Court Case	Reference	Impact on HWC
<i>Piketberg Local Heritage Committee and Another v Liebco Vleishandelaars Edms Bpk and others (Heritage Western Cape 2nd Respondent)</i>	Western Cape Division of the High Court of South Africa No. 1103 2016	Application for review of a decision of HWC's Built Environment and Landscape Committee (BELCom). Permission was granted by BELCom to demolish a building on Erf 207 in Piketberg. The Piketberg Heritage Committee applied to the High Court to review the decision as it argued that the provisions of PAJA were not complied with. The Court considered HWC's policy of requiring consultation only with registered conservation bodies and held that, as the decisions taken had the potential to affect members of the general public, broader public consultation was required. This means that HWC must ensure that public participation, in terms of PAJA is undertaken prior to taking a decision on an application.
<i>Bo-Kaap Residents and Ratepayers Association and others v City of Cape Town and others</i>	Western Cape Division of the High Court of South Africa, No. 7031/2017	HWC intervened in this application in which the Civic Association (which is a registered conservation body) applied for the review of the City of Cape Town's decision to erect a tall building located partially within an HPO and bordering on the Bo-Kaap and Riebeeck Square. The Court found that S27(18) of the NHRA cannot be extended to require that a permit must be obtained by the developer of a building abutting a heritage site. It found further that the City of Cape Town had taken all relevant factors into consideration and that it could not accordingly review and set aside its decision.
<i>Tower Property Fund Limited v Heritage Western Cape</i>	Western Cape Division of the High Court of South Africa, No. 7000/2018	Application for an order lifting the stop works order which was served by HWC in relation to building work on an adjacent property, which was feared to be causing damage to the adjoining heritage resource, namely a grade IIIA church building. The Court held that HWC should have given the applicant an opportunity to respond before serving the stop works order.

Part B: Our Strategic Focus

5. Vision

Inclusive, transformed, people-centred, sustainable management of heritage resources in the Western Cape.

6. Mission

Heritage Western Cape ensures and implements the inclusive identification, sustainable and integrated management, conservation and promotion of tangible and intangible heritage resources in order to contribute to transformation and nation building.

7. Values

Caring, Competence, Accountability, Integrity, Innovation, Responsiveness, Inclusivity and Respect.

8. Situational Analysis

Since its establishment in October 2002, Heritage Western Cape has developed systems for the management of applications that are submitted to it in terms of the National Heritage Resources Act, and is recognised as a leading heritage resources authority in terms of this area of operations.

Over the past years, the organisation has sought to clarify a number of issues concerning its major area of operations. While it has successfully established clear rules for its operations, in particular with regards to the processing of applications, HWC is pursuing delegations to local authorities who have expressed an interest to take on functions for the management of local heritage resources. Discussions are ongoing with local municipalities to establish a framework that will enable the delegation process to unfold. Pertinent to local authorities are the regulations for s30 and s31 of the NHRA which HWC is finalising, which regulate the public consultation process required for the establishment of heritage registers and heritage areas. The establishment of heritage registers and heritage areas in place will create certainty as to which listed resources and areas are formally protected and will allow the lifting of the general protections of the NHRA in such areas. HWC continues to build on its cooperative relationship with South African Heritage Resource Agency (SAHRA) in terms of the Memorandum of Understanding (MOU) in respect of the management of sites of national significance within the Western Cape, and other matters of transversal interest.

During its strategic planning session, HWC identified the following as its key priorities:

- building an efficient heritage resources management system that enables stakeholders and communities to have confidence in the work of HWC.
- the declaration of significant heritage resources as provincial heritage sites in order to reflect the diversity of the province and the heritage of communities that were neglected in the past;
- reaffirming the relationship with municipalities and conservation bodies in order to ensure compliance with the NHRA, in particular with conditions set in permits and other records of decisions;

- undertaking outreach programmes to communities in order to highlight the positive and stabilising effects that heritage can have in resolving social ills, creating social inclusion and building active citizenship; and
- Improving the understanding of the value of heritage resources through the use of explanatory signage.

8.1. External Environment Analysis

Political environment

Heritage Western Cape, although not a political organisation, its council is appointed by the Minister responsible for Cultural Affairs in the Western Cape. The Minister establishes the organisation in terms of terms of Section 23 of the National Heritage Resources Act. It is supported by the Department Cultural Affairs and Sport through an annual transfer payment and support services that include human resources, financial support service and IT support services.

Economic environment

While the country and the Western Cape has been experiencing a slow economic growth, the work that HWC does has been identified as one of the possible panacea to stimulate growth. It is for this reasons that support to HWC has been increased through an earmarked funding during the Medium-Term Expenditure Framework.

Social environment

Public interest in heritage continues to increase and recent case law demonstrates the active citizen participation in the heritage management processes of HWC. HWC encourages local communities to register themselves as conservation bodies in terms of Section 25 of the NHRA. This allows conservation bodies formal comment within the heritage application process of HWC. Conservation Bodies empower communities to have an active say regarding the significance of identified heritage resources within their local areas. HWC publishes its meeting agendas and minutes on its blog to allow interested local communities access to information. Further updates are also provided on a weekly basis on the blog where decisions are made at the Heritage Officers Meetings (HOMs).

Technological environment

Since HWC has developed an online information management system, it has recently engaged with the national heritage resources agency to merge its online system with that of SAHRA, into what is referred to as the South African Heritage Information Management System (SAHRIS). SAHRA, as the national agency, may determine how an entity reports to it in respect of the management of the national estate in terms of the NHRA. It is envisioned the use of SAHRIS will allow for greater online accessibility of its application process and input to the national inventory database of SAHRA.

Environmental

The recent drought and fires have highlighted the concerns regarding the impact of climate change and the increased risk of natural disasters in the Western Cape. Such risks imply a risk to heritage resources (example archaeological sites or buildings of heritage significance) and recent events such as the fires in Knysna and the historic town of Wupperthal, resulted in HWC developing an emergency application process which allows for a shorter turnaround time for the issuing of permits.

Legal & regulatory environment

Heritage Western Cape operates within the environment that requires it to respond to development applications swiftly whilst ensuring that it discharges its mandate of protecting heritage resources. Over the past few years, applications that are submitted to HWC have become more complex, at the same time there has been increasing pressure to ensure that these applications are processed expeditiously.

Heritage Western Cape is required to ensure that its decisions are taken in meetings open to the public and that there has been sufficient public participation in terms of relevant legislations. This may cause delays resulting in HWC being perceived as a barrier to economic growth in the Western Cape. It is envisioned the use of SAHRIS will assist members of the public to track the status of their applications and outcomes of decisions taken by committees.

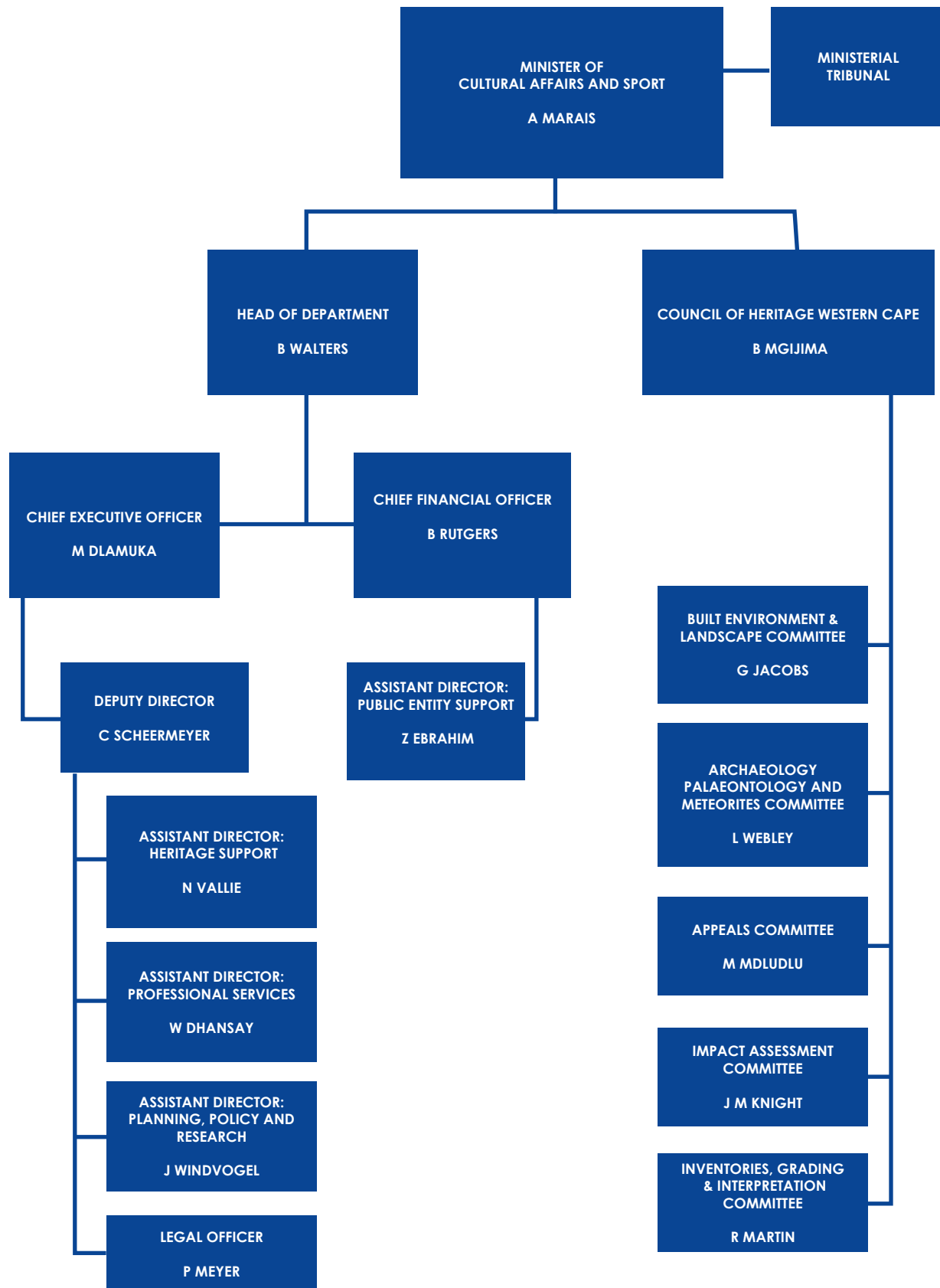
8.2. Internal Environment Analysis

HWC is charged with the identification, protection, conservation, management and promotion of heritage resources. Due to capacity constraints HWC has primarily focused on the processing of applications and protection of heritage resources as Provincial Heritage Site (PHS). The system of delegations has been revised to enable committees to consider complex and/or controversial applications. Such committees meet on a monthly basis, while the HOMs are held weekly. The expansion of delegations to HOMs has limited the number of items that are considered by BELCom and IACom, while HOMs have taken up more cases in order to cope with the increasing volume of applications.

The need to empower local authorities to establish Heritage Areas and Heritage Inventories has increased. In response to this, HWC has developed regulations that guide municipalities to comply with the provisions of Sections 30 and 31 of the NHRA. HWC will be assisting municipalities in order to identify Heritage Areas in their areas of jurisdiction. The promulgation of Heritage Areas will provide certainty as the requirements of Section 34 may be lifted outside of these declared Areas.

In recent years there has been a steady increase in the number of applications HWC has processed. Whilst this is a positive development as it indicates greater responsiveness from the public to the requirements of heritage legislation, it has also placed significant constraints on the organisation, as the current staff component is not adequate to address the increase in the volume of work. In response to the increase in the number of applications, HWC has developed tools to facilitate greater responsiveness in the processing of applications.

HWC’s macro structure is as follows:



Part C: Measuring Our Performance

9. Institutional Performance Information

9.1. Measuring the Impact

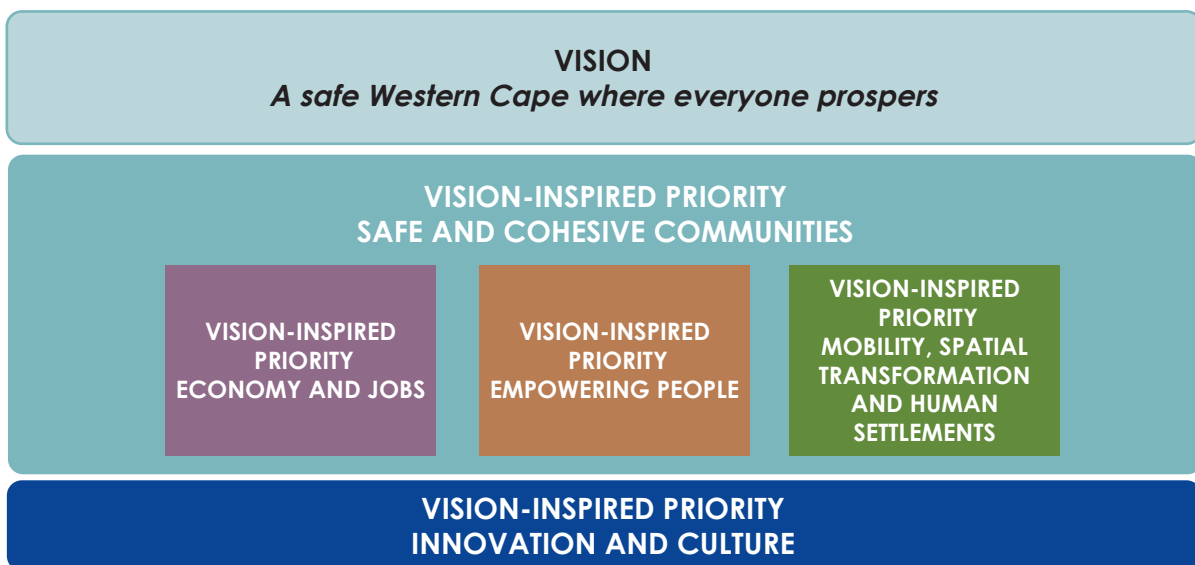
Impact statement	Conserve and promote heritage resources that build a sense of social inclusivity and contribute to economic growth.
-------------------------	---

9.2. Measuring Outcomes

Outcome	Outcome Indicator	Baseline	Five-year target
Integrated management of heritage resources in the Western Cape.	Number of provincial interventions to protect heritage resources in terms of the NHRA	116	580
	Number of initiatives to promote the management of heritage resources in the Western Cape	4	20

9.3. Explanation of Planned Performance over the Five-Year Planning Period

The Provincial Strategic Plan (PSP) Vision Inspired Priorities (VIPs) is a set of overarching strategic objectives for the Western Cape Government, setting out clear outcomes to be achieved during the medium term period. These objectives reflect the needs and priorities of the Western Cape Government and are used to drive integrated and improved performance across the public sector in the Western Cape. See VIP table below:



Heritage Western Cape contributes to VIPs 2, 3 and, 4 in the following manner:

VIPs	HWC Contribution
2	Creates an enabling environment that promotes sustainable use of heritage resources in a manner that promotes economic growth and appropriate development.
3	Heritage Western Cape engages with communities to educate and promote the value of heritage resources as a contributor to economic growth and skills development.
4	Heritage Western Cape encourages partnerships with other spheres of government in order to ensure an integrated approach to the management of heritage resources. Through this approach, HWC engages with municipalities and relevant authorities regarding spatial development and planning processes.

a. Rationale for outcome indicators

Heritage Western Cape's Outcomes is aligned to its legislative mandate in terms of the National Heritage Resources Act.

b. Enablers to achieve five-year targets

Support from the DCAS through its annual transfer payments and administrative support to HWC.

An uptake of fees for the rendering of administrative services in the processing of applications to HWC, to prevent a reduction of funds in order to ensure continued service delivery.

Cooperation with other spheres of government, civil society, and the private sector to enhance service delivery.

c. Contribution of outcomes to impact

The Outcomes contribute to the conservation and promotion of heritage resources that build a sense of social inclusivity and contribute to economic growth.

10. Key Risks

Outcome	Key Risk	Risk Mitigation
Integrated management of heritage resources in the Western Cape.	Unauthorised development	Strengthening of HWC outreach programmes
		Appointment of heritage inspectors
		Hosting enforcement workshops or awareness programmes with local municipalities

Part D: Technical Indicator Descriptions (TID)

Indicator title	Number of provincial interventions to protect heritage resources in terms of the NHRA
Definition	Assessment and protection of heritage resources at a provincial level
Source of data	Agendas and minutes of meetings
Method of calculation/assessment	Quantitative (Simple Count)
Assumptions	Target will be met as planned
Disaggregation of beneficiaries	Not applicable
Spatial transformation	Not applicable
Reporting cycle	Annual progress against the five-year target
Desired performance	Higher performance is desired
Indicator responsibility	Chief Executive Officer

Indicator title	Number of initiatives to promote the management of heritage resources in the Western Cape
Definition	Engagements with communities and other government structures
Source of data	Registers, agendas and minutes of meetings
Method of calculation/assessment	Quantitative (Simple Count)
Assumptions	Target will be met as planned
Disaggregation of beneficiaries	Not applicable
Spatial transformation	Not applicable
Reporting cycle	Annual progress against the five-year target
Desired performance	Higher performance is desired
Indicator responsibility	Chief Executive Officer