



**URhulumente
weNtshona Koloni**
ImiCimbi yeNkcubeko
nezemiDlalo



Heritage Western Cape
Erfenis Wes-Kaap
ILifa leMveli leNtshona Koloni

ISicwangciso sokuSebenza soNyaka

2018/2019

ILIFA LEMVELI LENTSHONA KOLONI

IsiCwangciso seNkqubo yoNyaka

2018/19

**Umhla wokungeniswa kwaso
nguMatshi 2018**

ISINDULULO

IBhunga laMafa eMveli eNtshona Koloni lifaka isiCwangciso salo seNkqubo yoNyaka esilungiselelwe uMgaqo-sikhokelo weNkcitho yombindi wonyaka-mali ka-2018/19 ukwenzela ukulandela iimfuno zoMthetho ka-1999 woLawulo lweeMali zikaRhulumente, (uMthetho woku-1 ka-1999) kunye nemiGaqo kaNongxowa weSizwe.

Ukususela oko lathi lasekwa ngo-2002, kulandelwa uMthetho ka-1999 wooVimba baMafa eMveli eSizwe (uMthetho wama-25 ka-1999), ilifa leMveli eNtshona lizibonakalise njengentsika yophuhliso lwamafa emveli ePhondo. Owona msebenzi weli qumrhu kukecebisa uMphathiswa wemiCimbi yeNkcubeko nezemiDlalo malunga neyona ndlela iyiyoyokuqhutywa kwalo Mthetho. IBhunga langaphambili laMafa eMveli eNtshona Koloni lachongwa ngomhla woku-1 kuNovemba ka-2016 liza kuqhuba ukuya kuma ngowama-31 kuOkthobha ka-2019.

AMarcus

nguANROUX MARAIS

UMPHATHISWA WEMICIMBI YENKCUBEKO NEZEMIDLALO ENTSHONA KOLONI

UKUKHUTSHWA NGOKUSESIKWENI

Thina, bantu basayine apha ngezantsi, sivakalisa sinyanisile ukuba esi siCwangciso seNkqubo yoNyaka:

- senziwe ngabaphathi beLifa leMveli leNtshona Koloni, bekhokelwa nguMphathiswa uAnroux Marais;
- silungiswe ngokuhambelana nesiCwangciso sokuSebenza sangoku seLifa leMveli leNtshona Koloni; yaye
- sibonisa ngokuchanekileyo iithagethi zenkqubo elijonge ukuyifezekisa iLifa leMveli leNtshona Koloni ngokwezixhobo eziye zalungiselelwa kwibhajethi yonyaka-mali ka-2018/19.

BRENDA RUTGERS
IGosa eliyiNtloko kwezeMali



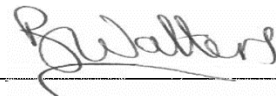
Ukusayina

MXOLISI DLAMUKA
UGunyaziwe woBalo-mali kwiLifa leMveli
eNtshona Koloni



Ukusayina

BRENT WALTERS
INtloko yeSebe leMicimbi yeNkcubeko nezemiDlalo



Ukusayina

Savunywa ngu:

ANROUX MARAIS
UMphathiswa weSebe leMicimbi yeNkcubeko nezemiDlalo



Ukusayina

Isiqulatho

ICANDELO A: AMAGQABANTSHINTSHI AMALUNGA NESI SICWANGCISO ..	7
1. Umbono	7
2. Umgomo	7
3. Iimfundiso ezisisiseko	7
4. Imithetho nezinye iziGunyaziso	7
4.1 ImiSebenzi ebekelwe kuMgaqo-siseko	7
4.2 Imithetho ekufuneka ilandelwe	8
4.3 Imigaqo-nkqubo ekufuneka ilandelwe	9
4.4 Izigwebo zenkundla ezihambelana neli ziko	9
4.5 Amaphulo acwangciselwe ukuqhuba imigaqo-nkqubo	10
5. Uphononongo lwemeko	10
5.1 Iimeko esiza kuqhutywa phantsi kwazo esi sicwangciso	11
5.2 Ubume beli qumrhu	13
5.3 Ingcaciso yenkqubo yokucwangciseka ukusebenza	14
6. Iinjongo eziphambili ezisekelwe kwiziphumo zeHWC	14
ICANDELO B: IINJONGO EZIPHAMBILI	16
7. Ilifa leMveli leNtshona Koloni	16
7.1 Iinjongo eziphambili	16
7.2 Ukuthathelwa ingqalelo kwezixhobo nabasebenzi	17
7.3 UkuLawulwa kwemiNgcipheko enokuvela	17
8. Iithagethi zonyaka kunye nezalathi zentsebenzo yeNkqubo ka-2018/19	19
9. Iithagethi zekota yonyaka-mali ka-2018/19	19
10. Ukudityansiwa kweethagethi zendlela ekuqhutywa ngayo kunye nebhajethi kwakunye neMTEF	20
IsiHlomelo A. Ingcaciso yezibonisi zemiba ethile	22
IsiHlomelo B: Ukutshintsha kwezalathi zeenjongo eziphambili	24

Izifinyezo

APM	IKomiti yeArchaeology, Palaeontology and Meteorites (Ikomiti yofundo-mbali yemizila, imizila namatyase asemajukujukwini)
BELCom	Built Environment and Landscapes Committee (IKomiti yeendawo ezakhiweyo nokuma komhlaba)
DCAS	Department of Cultural Affairs and Sport (ISebe leMicimbi yeNkcubeko nezemiDlalo)
ECM	Enterprise Content Management (ULawulo loyena Ndoqo wenziwayo)
EPWP	Expanded Public Works Programme (nkqubo yeMisebenzi eYandisiweyo kaRhulumente)
HOMs	Heritage Officers Meetings (Iintlanganiso zamagosa ezamafa emveli)
HIMS	Heritage Information Management System (Iindlela zoLawulo lolwazi olumalunga namafa emveli)
HWC	Heritage Western Cape (iLifa leMveli leNtshona Koloni)
IACom	Impact Assessment Committee (Ikomiti yokuhlolwa komonakalo)
ICT	Information and Communication Technology (Ezeteknoloji yolwazi nonxibelelwano)
IGIC	Inventories, Grading and Interpretations Committee (Ikomiti yoluhlu, ukuBekwa kweNqanaba loMgangatho wokubaluleka nokutolikwa kwamafa emveli)
MEC	Member of the Provincial Executive Council (UMphathiswa wePhondo)
MTEF	Medium-Term Expenditure Framework (uMgaqo-sikhokelo weNkcitho yombindi wonyaka-mali)
NHRA	National Heritage Resources Act (uMthetho ka-1999 wooVimba baMafa eMveli eSizwe)
PFMA	Public Finance Management Act, 1999 (uMthetho ka-1999 woLawulo lweeMali zikaRhulumente)
PN	Provincial Notice (iSaziso sePhondo)
SAHRA	South African Heritage Resources Agency (iArhente yoovimba baMafa eMveli baseMzantsi Afrika)

ICANDELO A: AMAGQABANTSHINTSHI AMALUNGA NESI SICWANGCISO

1. Umbono

Ukuchongwa okungalibazisiyo koovimba bamafa emveli okuquka konke kwakunye nokulawulwa kwabo okuzinzileyo.

2. Umgomo

ILifa leMveli leNtshona Koloni liqinisekisa ngokuchongwa okundindeneyo, ukulawulwa ngokukuko, ukulondolozwa nokwaziswa koovimba bemveli abagcinelwe izizukulwana zangoku nezizayo.

3. Iimfundiso ezisisiseko

Ukukhathala, ulwazi olupheleleyo, ukuthembeka, ukunyaniseka, ukuza nezinto ezintsha, ukuhlangabezana neemfuno, ukubandakanya konke kunye nentlonipho.

4. Imithetho nezinye iziGunyaziso

ILifa leMveli leNtshona Koloni (iHWC) lisebeza ngokwendlela eyalelwa yimithetho nalapho imisebenzi yalo isekelwe:

- ekuphuculeni ulawulo olululo kuwo onke amanqanaba;
- ekuxhobiseni uluntu nasekukhuliseni lilondolozwe oovimba bamafa emveli ukuze badluliselwe kwizizukulwana ezizayo;
- ekubekeni imigaqo ephangaleleyo yokuqhuba ulawulo loovimba bamafa emveli kwiNtshona Koloni gabalala; kunye
- nasekuziseni indlela endindeneyo yokuchonga, ukuhlola kunye nokulawula oovimba bamafa emveli abakweli phondo, yonke loo nto isenziwa kulandelwa uMthetho woovimba baMafa eSizwe kunye nemigaqo yawo.

4.1 Imisebenzi ebekwe kuMgaqo-siseko

Icandelo	Ingcaciso
UMgaqo-siseko weRiphabliki yoMzantsi Afrika, ka-1996	
Icandelo 24(b)(ii) Okusingqongileyo	Kufuneka iLifa leMveli leNtshona Koloni liseke umthetho okanye ezinye iindlela zokulawula nokubeka esweni ukukhuthazwa kokulondolozwa kwezinto zendalo zemveli eziseNtshona Koloni. Oku kunokwenziwa ngendlela angahambiselani ncam nemigaqo noMqulu wamaLungelo.
Icandelo 31: Abantu abaphila ngokwenkcubeko yabo, ngokonqulo lwabo nangokolwimi lwabo	Kufuneka iLifa leMveli leNtshona Koloni liqinisekise ukuba iinkqubo neeprojekthi zalo zikuthathela ingqalelo ukwahluka kweenkcubeko zabantu beNtshona Koloni.
Icandelo 41: Imigaqo karhulumente wentsebenziswano nobudlelane phakathi koorhulumente	ILifa leMveli leNtshona Koloni lisebenzisana nawo onke amanqanaba karhulumente. Ngokwemisebenzi eliyimiselayo, eli Lifa leMveli leNtshona Koloni lisebenzisana kakhulu neSebe lemiCimbi yeNkcubeko nezemiDlalo, iArhente yooVimba baMafa eMveli oMzantsi Afrika kunye noomasipala baseNtshona Koloni.
IsiHlomelo 4A: ImiMandla yentsebenzo ezinegunya kuyo zonke izindlu zowiso-mthetho - eyezwelonke nezamaphondo	Amafa emveli ayinxalenye 'yemicimbi yezenkubeko' eyimicimbi ehambelanayo, ngoko ke iLifa leMveli leNtshona Koloni lenza umsebenzi walo ngokubhekiselele kwimithetho yelizwe neyephondo.
UMgaqo-siseko ka-1997 wePhondo leNtshona Koloni, uMthetho woku-1 ka-1998	

ILifa leMveli leNtshona Koloni - IsiCwangciso seNkqubo

Icandelo 70:	Imithetho yephondo kufuneka ibe nemigaqo elungiselela ukusekwa kwebhunga okanye amabhunga enkubeko alungiselelwe uluntu lweNtshona Koloni olunelifa elifanayo lemveli yenkcubeko nolwimi kwaye elo bhunga okanye amabhunga axhaswe ngemali ngokufanelekileyo, kusetyenziswa imithombo efanekisa apha kweli Phondo.
Icandelo	Ingcaciso
Icandelo 81:	<p>Kufuneka iLifa leMveli leNtshona Koloni liqhube imigaqo-nkqubo yokukhuthaza nokugcina ubutyebi babantu beNtshona Koloni, kuquka imigaqo-nkqubo ejonge ukufezekisa:</p> <ul style="list-style-type: none"> • Ukukhuselwa nokulondolozwa kwamafa emveli embali yendalo, embali yenkcubeko, emizila yezinto nabantu ababephila apha eNtshona Koloni; ukwenzela ukulungiselela izizukulwana zangoku nezizayo. • ILifa leMveli leNtshona Koloni kufuneka liqhube imigaqo-nkqubo ethile njengendlela yokuxhasa oku.

4.2 Imithetho ekufuneka ilandelwe

Imithetho yelizwe	Umthombo wolwazi	Ingcaciso
UMthetho ka-1999 woVimba baMafa eMveli eSizwe	UMthetho wama-25 ka-1999	Ukucebisa uMphathiswa malunga nokuqhutywa kwalo Mthetho. I-HWC ikwanoxanduva lokuseka iindlela neenkqubo zokwenza oko kubekwe kulo Mthetho.
UMthetho ka-1999 woLawulo lweeMali zikaRhulumente	UMthetho woku-1 ka-1999	Njengequmrhu likarhulumente, iHWC kufuneka ibe nendlela esebenzayo yokulawula imali, ngokuhambelana noko kubekwe kulo Mthetho.
UMthetho ka-2000 wokuKhuthaza uFikelelo kuLwazi	UMthetho wesi-2 ka-2000	Lo Mthetho unika ilungelo lokufikelela kuzo zonke iirekhodi ezigcinwe ngurhulumente, amaziko karhulumente kunye namaziko abucala. Phakathi kwezinto ezenzayo iHWC kunye nawo onke amanye amaqumrhu karhulumente nawabucala, kufuneka: <ul style="list-style-type: none"> • aqulunqe isikhokelo esicacisela abantu indlela yokufaka isicelo sokufikelela kuLwazi olugcinwe lelo qumrhu; yaye • aqeshe igosa lezolwazi eliza kujongana nezicelo zokufikelela kuLwazi olugcinwe lelo qumrhu.
UMthetho ka-2000 wokuKhuthaza ubuLungisa kwezoMthetho	UMthetho wesi-3 ka-2000	Lo Mthetho: <ul style="list-style-type: none"> • ubeka imigaqo nezikhokelo ekufuneka zilandelwe ngabezomthetho xa bethatha izigqibo; • ufuna ukuba abezomthetho baxelele abantu malunga nelungelo labo lokujongwa ngokutya kwetyala okanye babhene kwakunye nelungelo labo lokucela izizathu zokubanjwa kwabo; • ufuna ukuba abezomthetho banike izizathu malunga nezigqibo abazithathayo; yaye • unika abantu ilungelo lokucela umngeni izigqibo zabezomthetho ezithe zakhutshwa enkundleni.
UMthetho ka-2013 wokuKhuselwa kweeNkcukacha zoMntu	UMthetho wesi-4 ka-2000	Lo mthetho ubeka iziko uxanduva lokuqinisekisa malunga noku kulandelayo: <ul style="list-style-type: none"> • Ukukhuthaza ukukhuselwa kweenkcukacha zomntu eziqokelelwe ngamaqumrhu karhulumente nawabucala; • Ukwazisa iimeko ezithile njengendlela yokuseka iimfuno ezisisiseko zokuqokelelwa kweenkcukacha zomntu. <p>Nanjengoko iHWC iziqokelela iinkcukacha zomntu xa ilungisa izicelo, kuya kufuneka iwulandele lo Mthetho wokukhuselwa kweeNkcukacha zoMntu.</p>

Imithetho yephondo	Umthombo wolwazi	Ingcaciso
ImiGaqo ka-2002 yokuLawulwa kooVimba baMafa eMveli eNtshona Koloni	iPN 336 yowama-25 kuOkthobha 2002	Le migaqo, ipapashwe ngumphathiswa wephondo ojongene nezobugcisa nenkcubeko, ingawona maxwebhu ayintsika yeHWC yaye inika owona msebenzi weli qumrhu kweli phondo ikwabeka neenkqubo ekufuneka zilandelwe.
ImiGaqo ka-2003 yokuLawulwa kooVimba baMafa eMveli eNtshona Koloni	iPN 298 yowama-29 kuAgasti 2003	Le migaqo ipapashwe liBhunga leHWC ukudandalazisa iinkqubo emazilandelwe ekufakeni izicelo kwiHWC. (Le migaqo ipapashwe ngalo mhla ngesiNgesi)
ImiGaqo ka-2003 yokuLawulwa kooVimba baMafa eMveli eNtshona Koloni	iPN 212 yowama-10 kuNovemba 2004	Le migaqo ipapashwe liBhunga leHWC ukudandalazisa iinkqubo emazilandelwe ekufakeni izicelo kwiHWC. (Le migaqo ipapashwe ngalo mhla ngesiXhosa nesiBhulu)

Imithetho yephondo	Umthombo wolwazi	Ingcaciso
ImiGaqo ka-2015 (yeLifa leMveli eNtshona Koloni) emalunga nenkqubo yokupapashwa kweengcaciso zezicwangciso zemigaqo-nkqubo gabalala nolawulo lolondolozo	iPN 7497/2015 kaSeptemba 2015	Le migaqo, ipapashwe liBhunga leHWC, icacisa iinkqubo ekufuneka zilandelwe ukupapasha nokuvuma iingcaciso zezicwangciso zemigaqo-nkqubo Gabalala kwanoLawulo loLondolozo.

4.3 Imigaqo-nkqubo ekufuneka ilandelwe

Umgqo-nkqubo	Ingcaciso
Imigaqo-nkqubo yelizwe	
UXwebhu lweNgcaciso loMithetho weLizwe oyilwayo omalunga nobuGcisa, iNkcubeko neLifa leMveli (1996) ¹	Olu xwebhu lunika umgaqo-sikhokelo olungiselelwe umgaqo-nkqubo welizwe nowephondo ngokubhekiselele kubugcisa, inkcubeko, amafa emveli, kunye neenkonzelo zamathala olwazi novimba bolwazi.
Imigaqo-nkqubo yeLifa leMveli eNtshona Koloni	
INcwadana esisikhokelo kwLifa leMveli leNtshona Koloni, yowama-20 kuSeptemba 2013, ehlaziywe ngo-2017.	INcwadana esisikhokelo equlethe yonke imigaqo-nkqubo, iinkqubo ezilandelwayo, izikhokelo nemigaqo yeli ziko. Isoloko ihlaziywa emva nje kokuba iBhunga livume umgaqo-nkqubo omtsha okanye lihlaziye umgaqo-nkqubo osele ukhona.

4.4 Izigwebo zenkundla ezihambelana neli ziko

Ityala lenkundla	Umthombo wolwazi	Ifuthe lalo kwiSebe iDCAS
<i>Qualidental Laboratories v Heritage Western Cape</i> [2007] SCA 170 (RSA)	Ityala leNkundla ePhakamileyo yeziBheni elingunamba 647/06	Esi sigwebo sangqina amagunya athwaliswe uMEC kunye neLifa leMveli eNtshona Koloni, magunya lawo ikukunyanzelisa imiqathango kwisakhiwo esithile ngokwecandelo lama-48 loMthetho ka-1999 wooVimba baMafa eMveli eLizwe.
<i>Top Performers (Pty) Ltd v Minister of Cultural Affairs and Recreation</i>	Ityala leNkundla ePhakamileyo yeNtshona Koloni elingunamba 5591/05	Esi sigwebo saba nefuthekazi kwiinkqubo zokubhena kunye namaqoqo okuxoxa amatyala achongwe nguMEC ngokwecandelo lama-49 loMthetho ka-1999 wooVimba baMafa eMveli eLizwe, ufundwa kunye noMgaqo 12 we-PN 336 ka-2003. ISebe i-DCAS kunye noMEC balandele amanyathelo okulungisa ukwenzela ukuqinisekisa ngokulandelwa kweenkqubo ezifanelekileyo zomthetho kwanokulungiselela ukufakwa kobungqina obutsha kwirekhodi yaloo nkqubo ilandelwa ngamaqoqo okuxoxa amatyala, ngokunjalo nokulandelwa ngcono kwemigaqo yobulungisa gabalala ngokwentetho ekhuthaza ukuviwa kwamacala omabini.
<i>Willows Properties (Pty) Ltd v Minister of Cultural Affairs and Sport</i>	Ityala leNkundla ePhakamileyo yeNtshona Koloni elingunamba 13521/08	Ummangali ufake isicelo esikhawulezileyo kwiNkundla ePhakamileyo ukuba inyanzele uMEC ukuba athathe isigqibo, kungenjalo akhuphe iRekhodi yeSigqibo ngokunxulumene nesibheni esifakwe kuMEC ngokwecandelo lama-49 loMthetho ka-1999 wooVimba baMafa eMveli eLizwe, ufundwa kunye nomgaqo 12(7) wePN 336 ka-2003. Ifuthe lesi sigwebo kwiSebe iDCAS kukuba liqinisekise ukuba amaqoqo axoxa amatyala azikhupha kwangoko iRekhodi zesiGqibo. Sele zenziwe iindlela zokulungisa oku.

¹ ISebe lezobugcisa neNkcubeko lelizwe lisakuqhuba ukuhlaziywa kolu xwebhu lwengcaciso yomthetho oyilwayo.

Ityala lenkundla	Umthombo wolwazi	Ifuthe lalo kwiSebe iDCAS
<i>Waenhuiskrans Arniston Ratepayers Association and Another v Verweide Eiendomsontwikkeling (Edms) Bpk and Others 1926/2008 [2009] ZAWCHC 181.</i>	Ityala leNkundla ePhakamileyo yeNtshona Koloni elingunamba 1926/2008	INkundla yaye yajonga ukuba iArhente yooVimba baMafa eMveli oMzantsi Afrika okanye iLifa leMveli leNtshona Koloni linawo na amagunya olawulo ngokubhekiselele kula maziko abekwe nguSAHRA njengamaziko akwiNqanaba loMgangatho woku-1 wokuBaluleka ngokwecandelo lama-35 nelama-36 loMthetho ka-1999 wooVimba baMafa eMveli eLizwe. INkundla yafumanisa ukuba nguSAHRA onamagunya okulawula kwiimeko ezinjalo. Esi sigwebo sibonisa ukuba iSebe iDCAS malixhase iLifa leMveli leNtshona Koloni kwezomthetho ukwenzela ukuba likwazi ukutolika imithetho, yaye kufuneka liqinisekise ukuba iHWC ilandela umsebenzi ewubekelwe ngokusemthethweni.
<i>Peter Gees v the Provincial Minister of Cultural Affairs and Sport, Western Cape, the Chairperson, Independent Appeal Tribunal, Heritage Western Cape, the City of Cape Town, City Bowl Ratepayers; & Residents' Association</i>	ICandelo leNtshona Koloni kwiNkundla ePhakamileyo yoMzantsi Afrika, unamba 6205/2015	INkundla iye yangqina ukuba ukunyanzeliswa kwemiqathango kuphantsi koMthetho ka-1999 wooVimba baMafa eMveli eLizwe, yaye kuyahambelana nalo Mthetho gabalala. Imiqathango inganyanzeliswa xa kukho imvume yokudiliza isakhiwo esidala esineminyaka engaphezu kwengama-60 ngokwecandelo 34(1) lalo Mthetho.
<i>Piketberg Local Heritage Committee and Another v Liebco Vleishandelaars Edms Bpk and others (Heritage Western Cape 2nd Respondent)</i>	ICandelo leNtshona Koloni kwiNkundla ePhakamileyo yoMzantsi Afrika, unamba 1103/2016	Isicelo sokuqwalaselwa ngokutsha kwesigqibo seKomiti yeendawo ezakhiweyo nokuma komhlaba (iBELCom) ephantsi kweHWC. I-BELCom yayinikwa imvume yokudiliza isakhiwo esikwiSiza 207 ePiketberg. IKomiti yeLifa leMveli yasePiketberg yafaka isicelo sokuba iNkundla ePhakamileyo isiqwalasele ngokutsha esi sigqibo nanjengoko yayisithi khangela ilandelwe imigaqo yePAJA. INkundla yaqwalasela umgaqo-nkqubo okhoyo ngoku weHWC ofuna ukuba iintlanganiso zichotshelwe namaqumrhu olondolozo abhalisiweyo kuphela, yaza yathi, njengokuba isigqibo esithathwayo sinokuchaphazela uluntu gabalala, kusafuneka kubanjwe iindibano noluntu. Oku kuthetha ukuba kusafuneka kuchotshelwe iingxoxo noluntu phambi kokuba iHWC ithathe isigqibo malunga nesicelo.

4.5 Amaphulo acwangciselwe ukuqhuba imigaqo-nkqubo

La maphulo okuqhuba lo mgaqo-nkqubo alapha ngezantsi acwangciselwe u-2018/19

Amaphulo acwangciselwe ukuqhuba imigaqo-nkqubo	Amaxesha okuyiqhuba
Imigaqo yecandelo lama-30 nelama-31: imigaqo enxulumene neendawo ezililifa lemveli kunye nokukhangelwa kokuma kwazo	31 Matshi 2019
Umgaqo-nkqubo waMafa eMveli angaBonakaliyo ojongene nokulawulwa koovimba bamafa emveli.	31 Matshi 2019

5. Uphononongo lwemeko

Ukususela oko lasekwayo ngoOkthobha ka-2002, iLifa leMveli eNtshona Koloni liqulunqe iindlela zokulawulwa kwezicelo ezifakwa kulo ngokoMthetho ka-1999 wooVimba baMafa eMveli eLizwe. Eli ziko sele lisaziwa njengogunyaziwe ophambili koovimba bamafa emveli kweli phondo.

Kule minyaka idlulileyo eli ziko liye lazama ukucacisa imiba ngemiba ngokuxulumene neyona misebenzi yalo. Nangona liphumelele nje ekusekeni imigaqo eliza kusebenza phantsi kwayo, ngokukodwa ngokunxulumene nokulandelelwa kwezicelo, iHWC isajonge ukunabisela umsebenzi wayo koogunyaziwe beendawo (koomasipala) ababonise umdla wokwenza imisebenzi yokulawulwa koovimba bamafa emveli endawo. I-HWC isaqhuba nokwakha intsebenziswano yokubambisana neSAHRA ngokweMemorandum yesiVumelwano ngokunxulumene nokulawulwa kweziza okanye iindawo ezikubaluleka kukumgangatho welizwe kodwa zikwiNtshona Koloni, kunye neminye imiba enika umdla kumntu wonke.

Ngenxa yokushokoxeka kwezixhobo zokusebenza, iHWC ikufumana kungumngeni ukuqhuba imiba ethile yomsebenzi wawo obekwe yiNHRA. Oku kuquka:

- Ukubekwa kweemonyamenti ezingaphezu kwama-2 500 ngokwamanqanaba athile omgangatho wokubaluleka, nebezisakuba zezelizwe kodwa ngoku ziluxanduva lwayo;
- ukubhengezwa koluhlu lweendawo ezintsha zamafa emveli ephondo, ukuze zibonise ukwahluka kwabantu beli phondo kunye neendawo zamafa emveli ebezisakungathathelwa ngqalelo ngaphambili;
- ukuxhasa ngemali ukuphonongwa komhlaba kunye nezintlu zamafa emveli, ukwenzela ukuchonga iingxaki zamafa emveli eziphuhliswayo, ngokwenjenjalo, isombulula ukukhabana kophuhliso nolondolozo;
- ukuqinisekisa ngokulandelwa kweNHRA, ngakumbi ngokubhekiselele kwimiqathango ebekwe kwiiphemithi nezinye iirekhodi zezigqibo;
- iinkqubo zongenelelo ezibonisa izinto ezintle ezenzelwa uluntu nokuzinzisa ifuthe elinokunikwa ngamafa emveli ekusombululeni iingxaki zentlalo, ukuzingca ngendawo nokuphucula ukuziqonda koluntu; ngokunjalo
- nokutolika amafa emveli ngokuxhoma iibhodi zengcaciso kunye nezinye iindlela, ngokwenjenjalo kufakwa igxalaba kwindlela uluntu oluwaqonda ngayo amafa emveli.

5.1 Imeko esiza kuqhutywa phantsi kwazo esi sicwangciso

I-HWC inoxanduva lokuchonga, ikhusele, ilondoloze, ilawule ize yazise oovimba bamafa emveli. Ngenxa yokungabi nabantu nazixhobo zaneleyo, iHWC ijonge ngokukodwa ukulandelelwa kwezicelo nokukhuselwa kwamafa emveli. Ezinye izicelo ezinzima kunye/okanye nezirhanisayo ziye zichotshelwe ziikomiti ngeekomiti zebhunga ezidibana rhoqo ngenyanga.

Kule minyaka idlulileyo, ziye zaya zisanda kakhulu izicelo ezilandelelwa kwiiNtlanganiso zamaGosa ezaMafa eMveli, ezichotshelwa rhoqo ngeveki. Le nto iye yabangela ukuba iHWC isebenzise abasebenzi abaninzi kangangoko ukwenzela ukumelana nale nqwaba yezicelo. I-NHRA idala indlela endindeneyo yokulawulwa koovimba bamafa emveli. Le ndlela ivumela ukuba la manqanaba mathathu orhulumento adlale indima kwinkqubo yokulawulwa koovimba bamafa emveli.

Iye yakhula imfuneko yokuxhobisa oogunyaziwe bendawo ukuba baseke iiNdawo zaMafa eMveli kunye neZintlu zaMafa eMveli. Njengendlela yokuhlangabezana noku, iHWC iqulunqe imigaqo esayilwayo eya kukhokela oomasipala ekulandeleni imigaqo yecandelo lama-30 nelama-31 leNHRA. I-HWC sele iqalise iingxoxo zoluntu loomasipala beNtshona Koloni.

Kule minyaka yakutsha nje kubonakala ukunyuka okukhulayo kwezicelo ezilandelelwe yiHWC. Nangona oku kubonisa ukukhula okuhle nanjengoko kubonisa ukuba uluntu luzithathela ingqalelo iimfuno zemithetho yamafa emveli, kukwabeke ubunzima emagxeni eli ziko, nanjengoko lingenabasebenzi baneleyo bokujongana nokwanda komsebenzi wabo.

I-HWC iqulunqe iNdlela yoLawulo lweeNkcukacha zaMafa eMveli (iHIMS) ekhoyo ngoku njengesixhobo sangaphakathi sokulawulwa koovimba bamafa emveli eli phondo abanokususwa kwiindawo zabo nabazinzileyo abangasukiyo. Ukuba ibhengeziwe imigaqo eyilwayo esandula kwenziwa yiSAHRA, iya kuba nefuthe kakhulu kwindlela iHWC enika ngayo ingxelo kwiSAHRA malunga nolawulo loovimba bamafa emveli kweli phondo. Oku kunokuphelela ekubeni kube nefuthe kwindlela emi ngayo iHIMS. Kusahlolwa isisombululo esinxulumanisa neNdlela yokuJongana noLwazi olumalunga nooVimba baMafa eMveli oMzantsi Afrika (iSAHRIS) esetyenziswa yiSAHRA.

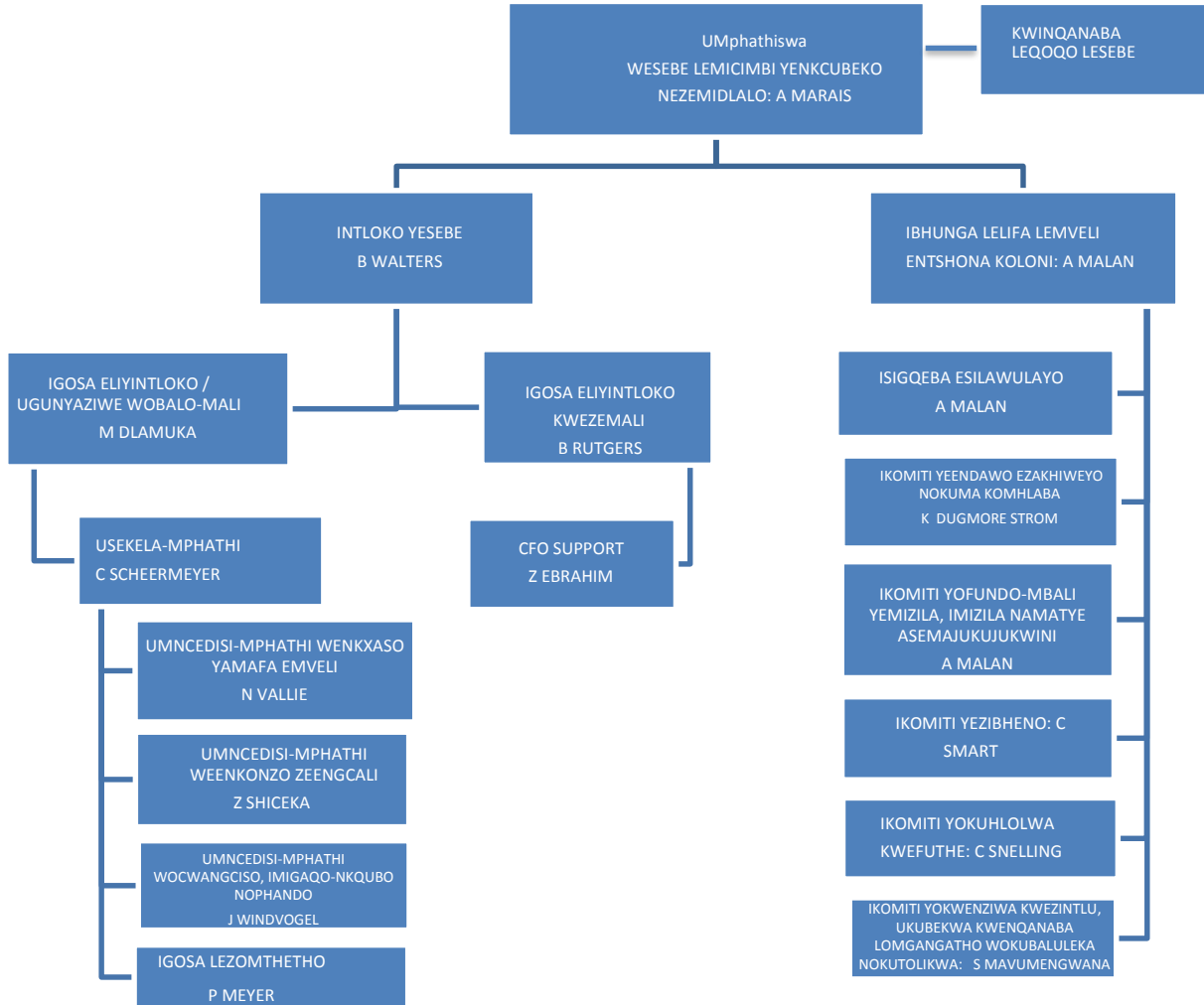
Ukulondolozwa kweNdawo yeLifa leMveli eliyiNdawo yeeMfene (iBaboon Point Provincial Heritage Site),

eseElands Bay, kuqhutywa ngenkxaso yegranti evela kwiNational Lottery Distribution Trust Fund. Le mali isetyenziselwa ukuxhobisa abantu bendawo ukuba basebenze njengabakhokeli babatyeleli banike nolwazi lokwazisa le ndawo ililifa lemveli elibalulekileyo.

ISebe lemiCimbi yeNkcubeko nezemiDlalo liqalise inkqubo yokubhala umthetho wephondo onxulumene namafa emveli. I-HWC iza kulinda isiphumo sale nkqubo yomthetho.

5.2 Imeko yeziko

Ukuma kweli Ziko



Ingqesho nezithuba zengqesho

Abasebenzi beHWC baqeshwe liSebe iDCAS.

5.3 Ingcaciso yenkqubo yokucwangcisa ukusebenza

IBhunga lineeseshoni zokucwangcisa ukusebenza eziye zahlaziya umbono, umgomo neemfundiso ezisisiseko ngokuhambelana nokunikwa kweenkonzo kunye nemeko yomgaqo-nkqubo ophangaleleyo. Oku kuphelele ekubeni kuhlaziye umbono nomgomo weHWC ebekwe kwisicwangciso sokusebenza sika-2015-2020. Ngaphezulu, iBhunga ligqibe ekubeni lihambelanise izalathi zeenkqubo ezithile, ukwenzela ukuqinisekisa ngokulungelelaniswa kwazo nombono weHWC. Eli qumrhu likwasebenzisana neSebe lemiCimbi yeNkcubeko nezemiDlalo ngokunxulumene nezicwangciso zonyaka-mali ka-2018/19.

6. Iinjongo eziphambili ezisekelwe kwiziphumo zeHWC

Nazi iinjongo eziphambili zeHWC:

INjongo ePhambili	Ukuchonga, ukukhusela, ukulondoloza, ukulawula nokwazisa oovimba bamafa emveli eNtshona Koloni.
Ingcaciso yeNjongo	Ukuchonga, ukukhusela, ukulondoloza, ukulawula nokwazisa oovimba bamafa emveli eNtshona Koloni ukulungiselela izizukulwana zangoku nezizayo.
Isizathu	Njengequmrhu likarhulumente, iHWC inyanzelwa nguMthetho wooVimba baMafa eMveli eLizwe (uMthetho wama-25 ka-1999) ukuba icebise uMphathiswa ekuchongeni, ekukhuseleni, ekulondolozeni, ekulawuleni nasekwaziseni oovimba bamafa emveli.
Okunxulumene nayo	Isebe elingentla: Ukukhuthazwa kokuphuhlisa nokuguqulwa kwezenzo zenkcubeko, ukulungiselela ukufaka igxalaba ekwakhweni kwesizwe; kulawulo olululo, uphuhliso lwentlalo nezinto ezinkulu zoluntu; kunye nokuhlunyiswa koqoqosho oluzinzileyo namathuba.

6.1 Ukunxulunyaniswa neenjongo eziphambili zephondo

IsiCwangciso seNkqubo yePhondo luhlu lweenjongo eziphambili eziphangaleleyo zoRhulumente weNtshona Koloni, apho kubekwa iziphumo ezicacileyo ekufuneka zifezekiswe kwithuba eliphakathi kunyaka-mali. Ezi njongo zibonisa iifundo nezinto eziphambili ezimele ukwenziwa nguRhulumente weNtshona Koloni yaye zisetyenziselwa ukuqhuba inkqubo endindeneyo nephuculweyo kwicandelo likarhulumente gabalala eNtshona Koloni.

Nazi iinjongo zePhondo eziPhambili zika-2015 ukuya ku-2019:



linjongo eziphambili zephondo ziboniswe apha ngentla:

Ilifa leMveli leNtshona Koloni lancedisa kwiPSG (injongo ephambili yephondo) 3 neyesi-4 ngale ndlela ilandelayo:

iPSG	Inxaxheba yeHWC
3	Ukudala imeko eyamkelayo ekhuthaza ukusetyenziswa okuzinzileyo koovimba bamafa emveli, ngendlela ekhuthaza ukwahluka iqinise impilo entle apha kwiPhondo leNtshona Koloni.
4	Ukukhuthaza ukubandakanywa kweentlobo ezahlukeneyo zabantu kunye nokuziqonda kwabantu ukuba bangoobani, ngokuthi kulondolozwe kulawulwe ngokundindeneyo oovimba bamafa enkcubeko yemveli, ngokomsebenzi wamaqumrhu olondolozo lwamafa emveli kunye nangeekomiti zeLifa leMveli leNtshona Koloni.

ICANDELO B: IINJONGO EZIPHAMBILI

7. Ilifa leMveli leNtshona Koloni

Injongo yeLifa leMveli leNtshona Koloni kukucebisa uMphathiswa malunga nokuqhutywa koMthetho wooVimba baMafa eMveli eNtshona Koloni (uMthetho wama-25 ka-1999), ngokwenjenjalo likhusela likwalawula oovimba bamafa emveli eNtshona Koloni.

7.1 IiNjongo eziPhambili

INJONGO EPHAMBILI EPHANGALELEYO:	Ukuchonga, ukukhusela, ukulondoloza, ukulawula nokwazisa oovimba bamafa emveli eNtshona Koloni.
IINJONGO EZIPHAMBILI:	Ukulawula indlela endindeneyo yokulawulwa koovimba bamafa emveli eNtshona Koloni.
INjongo ePhambili	Ukulawula indlela endindeneyo yokulawulwa koovimba bamafa emveli eNtshona Koloni
Ingcaciso yenjongo	Ukulawula indlela endindeneyo yokulawulwa koovimba bamafa emveli eNtshona Koloni eya kuqinisekisa ngokuchongwa, ukulondolozwa, ukukhuselwa kunye nokwaziswa koovimba bamafa emveli kulo lonke uluntu, kulungiselelwa izizukulwana zangoku nezizayo ekukhuthazeni ukulawulwa ngokukuko kwala mafa kuwo onke amanqanaba.
Esisiseko	<ul style="list-style-type: none"> • Iintlanganiso ezimiselweyo ezisi-8 ngonyaka zeBhunga kunye nesiGqeba esiLawulayo kusenzelwa ukuqhuba iNHRA. • Iintlanganiso ezimiselweyo ezingama-40 ngonyaka zeekomiti eziza kuthatha izigqibo malunga nezicelo zokuqhuba iNHRA. • Iintlanganiso ezingama-44 ngonyaka zamaGosa aMafa eMveli eziza kuthatha izigqibo malunga nezicelo ngokwabathunywa beBhunga abathunyelwe ukuqhuba iNHRA • Ukuncedisa ekulungisweni kwamaxwebhu okuchongwa kweeNdawo ezingaMafa eMveli eHlabathi eNtshona Koloni.
Isizathu	I-HWC nabalawuli bayo balawulwa nguMthetho wooVimba baMafa eMveli eLizwe.
Okunxulumene nayo	Isebe elingentla: Ukukhuthazwa kokuphuhlisa nokuguqulwa kwezenzo zenkcubeko, ukulungiselela ukufaka igxalaba ekwakhweni kwesizwe; kulawulo olululo, uphuhliso lwentlalo nezinto ezinkulu zoluntu; kunye nokuhlunyiswa koqoqosho oluzinzileyo namathuba

lithagethi zonyaka zeeNjongo eziPhambili 2018/19

Isalathi senjongo ephambili	Intsebenzo yokwenyani/ePhicothiweyo			Intsebenzo eqikelelwayo	lithagethi zexesha eliphakathi kunyaka-mali				
	2014/15	2015/16	2016/17	2017/18	2018/19	2019/20	2020/21	2021/22	2022/23
Inani leentlanganiso ezimiselweyo zeBhunga nezeeKomiti ezilungiselelwa ukulawula oovimba bamafa emveli eNtshona Koloni	91	100	106	92	92	92	92	92	92

7.2 Ukuthathelwa ingqalelo kwezixhobo nabasebenzi

Ingcaciso	2015/16	2016/17	2017/18	2018/19	2019/20	2020/21
Izibonelelo zenkxaso	2 270	3 000	1 611	1 736	1 844	1 927
Icala enokuvela kuyo ingeniso	1 558	1 800	1 621	1 365	1 433	1 504

7.3 UkuLawulwa kwemiNgcipheko enokuvela

Umngcipheko woku-1: Oovimba bamafa emveli abasemngciphekweni wokonakaliswa.

Indlela yokulwa nalo mngcipheko:

- Kuqeshwe umcebisi wezomthetho osisigxina oza kunika iingcebiso zomthetho.
- Kuqulunqwe izikhokelo eziphangaleleyo kwaqeqeshwa namagosa eHWC. I-HWC iqhuba ukuhlola xa kukho ukungalandeli mthetho.
- Ukubhexesha nokuncedisana nokufakwa kweeRejista zobhaliso lwaMafa eMveli kwi-IDP/SDF (Umgaqo-sikhokelo wokunatyiswa kokusetyenziswa komhlaba) woomasipala ngokweNHRA.
- Amagosa eHWC aphantsa ukwakha okungekho mthethweni aze akulandelele anike ingxelo kwiikomiti ezifanelekileyo ezisekwe ngokweNHRA ukuze zithathe izigqibo malunga namanyathelo aza kwenziwa ngabasebenzi.
- Iiwekshophu/uqeqesho lweHWC olwenziwa ngamagosa kamasipala onyanzeliso lomthetho kunye nabahloli bezakhiwo.
- Ukunikwa kweengxelo zezehlo kwenziwa ngqo luluntu kuCEO weHWC, nezithi zilandelelwe ngamaxesha omsebenzi.
- UMcebisi wezomthetho weHWC uza kunxibelelana nogunyaziwe wezotshutshiso ukwenzela ukuphucula ukukwazi kwakhe ukuzisa ezinkundleni amatyala amalunga nokophulwa kwemigaqo elawula amafa emveli.
- Ukusebenzisana noomasipala okumalunga nokulungiswa kwezintlu zamafa emveli, ukufumana ukuzibophelela kwabaLawuli boomasipala (umz. iintlanganiso zeMINMAYTECH) ukwenzela ukuba balwazi uxanduva lwabo ngokunxulumene nokukhuselwa koovimba bamafa emveli.
- Ukubhexesha iwekshophu zokwazisa malunga namafa emveli kumaqela achaphazelekayo aphantsi afana noluntu oluchaphazelekayo, amaqumrhu olondolozo kunye noomasipala.

- Ukubhalwa kwezikhokelo zidluliselwe koogunyaziwe bendawo kunye nemibutho yeengcali ngokunjalo namaqumrhu olondolozo, ngokunxulumene nokuba yintoni oovimba bamafa emveli kwanendlela yokuchonga abo vimba bamafa emveli.
- Ukuqulunqwa kwekhasi elitsha kwiwebhusayithi yeHWC nokuvela kumajelo onxibelelwano ukuze kwaziwe ngokubaluleka kwamafa emveli.
- Ukusebenzisana necandelo locwangciso lwedolophu leSebe lemiCimbi yezeNdalo kunye nokuCwangciselwa koPhuhliso (iDEADP) ukwenzela ukuba amafa emveli afakwe ngcono ekucwangciseni koomasipala, ngokwenjenjalo kusenzelwa ukulwa nomngcipheko wokungaphuhliseki kwawo
- Kuqulunqwe iSOP yokuhlola ifuthe kusetyenziswana neDEADP ukwenzela ukufaka la mafa emveli kulawulo lwendalo.
- Kuchotshelwe iingxoxo kunye nabanye oogunyaziwe bendawo ukwenzela ukukhawulezisa inkqubo yokuqulunqa izintlu zamafa emveli. Ezi zintlu ziza kuvumela oomasipala kunye neHWC ukuba bajongane nezicelo zeephemithi ngendlela ebonisa ubungcali, yaye engalibazisiyo. Le nto iza kwenza ukuba uluntu lubazi oovimba bamafa emveli abakwiindawo zikamasipala.
- Kwiimeko ezithile, kufakwe iibheji kwiindawo zamafa emveli ephondo.
- I-HWC ikhuthaza ukulawulwa kwendlela abafikelela ngayo ooGunyaziwe bolawulo olufanelekileyo (umz. umnini-fama, oogunyaziwe bendawo, iingcali zezamafa emveli) kwiindawo zobugcisa obusematyeni, njengenxalenye yezicwangciso zolawulo lwazo.
- I-HWC ilandelela izicelo ikhuphe neephemithi zokususwa ngobungcali beegrafiti kwiindawo zobugcisa obusematyeni eNtshona Koloni.
- I-HWC ixelela iBhunga neeKomiti zayo malunga nendlela zokuziphatha ngokungekho mthethweni okwenziwa luluntu okanye iingcali, lize iBhunga neeKomiti zikudlulisele oko kuCEO othi yena athathe izigqibo malunga nokutshutshiswa kwabo bantu.

Umngcipheko wesi-2: Ukungakwazi kutsala mdla wabasebenzi abanezakhono ezifanelekileyo nakubagcina bengafuni kumka.

Indlela yokulwa nalo mngcipheko:

- Ukusetyenziswa kwamagosa e-EPWP ekuncediseni ngemisebenzi yokuba ngabamkeli kwicandelo lezemali nelamafa emveli.
- Ukuqaliswa okungalibazisiyo kweengxoxo kukwanikezelwa iintetho ezinxulumene namafa emveli eNtshona Koloni ezikolweni, eziyunivesithi nakwiikholeji. Kuphinde kubekho nemfuneko yokuqondwa ngokukuko kweyona ntsingiselo ithethwa ngamafa emveli ngokunxulumene nokucwangcisa, inzululwazi, ukuyilwa kwezakhiwo kunye nomthetho.

8. Iithagethi zonyaka kunye nezalathi zentsebenzo yenkqubo ka-2018/19

IINDLELA EZILUNGISELELWE INTSEBENZO YEPHONDO							
Izalathi zeNtsebenzo yeNkqubo	Intsebenzo yokwenyani/ ePhicothiweyo			Intsebenzo eqikelelwayo 2017/18	Iithagethi zexesha eliphakathi		
	2014/15	2015/16	2016/17		2018/19	2019/20	20120/21
1	Inani leentlanganiso ezimiselweyo ngonyaka zeBhunga kunye nesiGqeba esiLawulayo kusenzelwa ukuqhuba iNHRA.	8	9	8	8	8	8
2	Inani leentlanganiso ezimiselweyo zeekomiti apho kuthathwa khona izigqibo malunga nezicelo zokuqhuba iNHRA*	36	40	43	36	40*	40
3	Inani leentlanganiso zabasebenzi apho kuthathwa khona izigqibo malunga nezicelo ngokwabameli abasuka kwiBhunga abeze kuqhuba iNHRA	47	46	59	44	44	44

* Ibhunga livume ukuba isalathi sentsebenzo 'Inani leentlanganiso ezimiselweyo zeekomiti ezijongana nokukhangelwa kokuma komhlaba kunye nezicelo zokhuselo olusesikweni', sifakwe phantsi kwesalathi sesi-2 ukuqala ngowoku-1 kuEpreli ka-2018.

9. Iithagethi zekota yonyaka-mali ka-2018/19

Isalathi seNtsebenzo	unxulumaniso nePGS	Ihuba lokunika ingxelo	Iithagethi yonyaka	Iithagethi zekota				
				eyoku-1	eyesi-2	eyesi-3	eyesi-4	
1	Inani leentlanganiso ezimiselweyo zeBhunga kunye nesiGqeba salo esiLawulayo kusenzelwa ukuqhuba iNHRA	3 no-4	Ngekota	8	2	2	2	2
2	Inani leentlanga ezimiselweyo zeekomiti apho kuthathwa khona izigqibo malunga nezicelo zokuqhuba iNHRA	3 no-4	Ngekota	40	10	10	10	10
3	Inani leentlanganiso zabasebenzi apho kuthathwa khona izigqibo malunga nezicelo ngokwabameli abasuka kwiBhunga ukwenzela ukuqhuba iNHRA	3 no-4	Ngekota	44	11	11	11	11

10. UkuDityansiwa kweethagethi zendlela ekuqhutywa ngayo kunye nebhajethi kwakunye neMTEF

liNgqikelelo zeNkcitho

ILifa leMveli leNtshona Koloni

Inkqubo	Isiphumo esiphicothiweyo			Inkcitho eqikelelwayo	Ingqikelelo yeethagethi zexesha eliphakathi kunyaka-mali		
	2014/15	2015/16	2016/17		2017/18	2018/19	2019/20
R iwaka							
ILifa leMveli leNtshona Koloni	2 104	3 305	3 582	3 232	3 101	3 277	3 431
Isixa esingekapheleli	2 104	3 305	3 582	3 232	3 101	3 277	3 431
limali ezitsalwa ngqo kwiNgxowa yeNgeniso yeLizwe	-	-	-	-	-	-	-
Iyonke	2 104	3 305	3 582	3 232	3 101	3 277	3 431
Uhlelo ngokoqoqosho							
linlawulo zangoku	2 104	3 305	3 582	3 232	3 101	3 277	3 431
Imbuyekezo yabasebenzi							
Impahla neenkonzapho:							
Unxibelelwano	2	2					
linkonzo zekhompyutha					32	36	40
Abacebisi, obanini-khontrakthi kunye neenkonzophuhliso ezikhethekileyo	812	1 337	1 273	749			
Ubhaliso lwezintlu zamafa emveli	4						
Ukulungiswa nokugcinwa kwazo zikwimeko esebenzayo kunye Namaxabiso okuqhutywa kwazo							
Ukurentiswa kweendawo zokusebenzela							
Ukuthatha uhambo nezibonelelo ezinxulumene nako	157	203	172	334	363	364	382
lindleko zophicotho-zincwadi	110	55	81	100	97	110	116
Izibhengezo	77	62	77	128	35	95	100
Ezinye ²	942	1 646	1 979	1 921	2 574	2 672	2 792
Inzala nerenti yemihlaba li-transaction zemali kwiasethi nasematyaleni							
limali ezidluliswayo nezibonelelo eziya:	-	-		-			
Kwiphondo nakoomasipala							
Iiarhente neekhawunti zesebe kunye neekhawunti liyunivesithi							
Amaqumrhu karhulumente kunye namashishini abucala							
Oorhulumente bangaphandle kunye namaziko amazwe ngamazwe							
Amaziko angenzi nzuzo							
Ezamaziko ezinokuzibonisa							
Ukuhlawulelwa kweeasethi ezinkulu	-	-		-			

Ilifa leMveli leNtshona Koloni - IsiCwangciso seNkqubo

Izakhiwo nezinye izakhiwo ezingasukiyo							
Oomatshini nezixhobo ezincedisa umsebenzi (equipment) liasethi ezizinziweyo							
Isoftwe nezinye iiasethi ezingaphathekiyo							
Umhlaba kunye neeasethi ezisemhlabeni							
apho: Kukho imbuyekezo yezakhiwo ezikhulu							
Iyonke	2 104	3 305	3 582	3 232	3 101	3 277	3 431

² Kuquka isibonelelo sokuchophela iintlanganiso zeLifa leMveli leNtshona Koloni

IsiHlomelo A. Ingcaciso yezibonisi zemiba ethile

1. Isalathi senjongo ephambili

Isihloko sesalathi	Inani leentlanganiso ezimiselayo zeBhunga nezeeKomiti zalo ezibanjelwa ukulawula oovimba bamafa emveli eNtshona Koloni
Ingcaciso emfutshane	Intlanganiso ezimiselayo zeBhunga neSigqeba esilawulayo, ezinye iikomiti zeBhunga ezimiselayo.
Injongo/ukubaluleka	Ukuqhuba umsebenzi woGunyaziwe wooVimba baMafa eMveli ePhondo ngokweNHRA nokuqinisekisa ukuba izigqibo ezithathwayo ziyahambelana nomtheho kunye nemigaqo-nkqubo.
Umthombo/ukuqokelelwa kwedatha	Uluhlu lweentlanganiso, iiajenda, amaphepha obhaliso lwabakhoyo kunye nemizuzu yeentlanganiso.
Indlela yokubalwa	Ukubala okulula
Imida yedatha	Izicelo ezingagqitywanga
Uhlobo lwesalathi	Okulindeleke njengesiphumo nefuthe
Uhlobo lokubala	Oluqhubelekayo
Umjikelelo owokunikwa kwengxelo	Rhoqo ngonyaka
Isalathi esitsha	Asikho
Intsebenzo elindelekileyo (okukhutshwayo)	Ngokwethagethi
Uxanduva lwesalathi	USekela-Mphathi
Umngcipheko ophambili	Imingeni enxulumene nokufezekiswa kweemfuno zekhoram nanjengoko amalungu iziingcali ezizimeleyo ezingaqeshwanga yiHWC okanye isebe.
Indlela yokuwuthomalalisa	Ikhelenda yeentlanganiso ezimiselayo ivunywa liBhunga ize idluliselwe kwabo bachaphazelekayo kwakunyaka owandulela loo nyaka wokuchotshelwa kwezo ntlanganiso. IBhunga kunye nesiGqeba esiLawulayo bakhutshelwa imiyalezo ebakhumbuza malunga neentlanganiso ezo, kwangeveki eyandulela intlanganiso ecwangcisiweyo; ukuze amalungu atsho kwangoko ukuba ayaphumelela na. Oolwesihlanu babekelwe bucala ukuze amaGosa ezaMafa eMveli akwazi ukujongana nezicelo.

2. Izalathi zeNtsebenzo yamaCandelo athile

2.1	Isihloko sesalathi	Inani leentlanganiso zeBhunga kunye nesiGqeba esiLawulayo ezimiselayo ngonyaka kusenzelwa ukuqhuba iNHRA.
	Ingcaciso emfutshane	Intlanganiso ezimiselayo zekota zeBhunga nesiGqeba esiLawulayo.
	Injongo/ukubaluleka	Ukuqhuba umsebenzi woGunyaziwe wooVimba baMafa eMveli ePhondo ngokweNHRA kunye nokuthatha izigqibo ezihambelana nalo Mthetho.
	Umthombo/ukuqokelelwa kwedatha	Imihla yeentlanganiso ezimiselayo, amaphepha obhaliso lwabakhoyo, iiajenda nemizuzu yeentlanganiso
	Indlela yokubalwa	Ukubala okulula
	Imida yedatha	Azikho
	Uhlobo lwesalathi	Okulindeleke njengesiphumo nefuthe
	Uhlobo lokubala	Oluqhubelekayo
	Umjikelelo owokunikwa kwengxelo	Ngekota
	Isalathi esitsha	Asikho
	Intsebenzo elindelekileyo (okukhutshwayo)	Ngokwethagethi
	Uxanduva lwesalathi	USekela-Mphathi
	Umngcipheko ophambili	Imingeni emalunga neemfuno zekhoram zeentlanganiso, nanjengoko amalungu iziingcali ezizimeleyo ezingaqeshwanga leli ziko.

	Indlela yokuwuthomalalisa	Ikhelenda yeentlanganiso ezimiselweyo ivunywa liBhunga ize idluliselwe kwabo bachaphazelekayo kwakunyaka owandulela loo nyaka wokuchotshelwa kwezo ntlanganiso. IBhunga kunye nesiGqeba esiLawulayo bakhutshelwa imiyalezo ebakhumbuzo malunga neentlanganiso ezo, kwangeveki eyandulela intlanganiso ecwangcisiweyo; ukuze amalungu atsho kwangoko ukuba ayaphumelela na.
--	----------------------------------	--

2.2	Isihloko sesalathi	Inani leentlanga ezimiselweyo zeeKomiti apho kuthathwa khona izigqibo malunga nezicelo zokuqhuba iNHRA
	Ingcaciso emfutshane	Iintlanganiso ezimiselweyo zekomiti yeHWC nezithatha izigqibo ezisekelwe kumgaqo-sikhokelo wabameli.
	Injongo/ukubaluleka	Ukujonga izicelo ezifunyenweyo kunye nokuthatha izigqibo egameni leBhunga leHWC.
	Umthombo/ukuqokelelwa kwedatha	Imihla yeentlanganiso ezimiselweyo, amaphepha obhaliso lwabakhoyo, iijenda nemizuzu yeentlanganiso.
	Indlela yokubalwa	Ukubala okulula
	Imida yedatha	Azikho
	Uhlobo lwesalathi	Okulindeleke njengesiphumo nefuthe
	Uhlobo lokubala	Oluqhubelekayo
	Umjikelelo owokunikwa kwengxelo	Ngekota
	Isalathi esitsha	Asikho
	Intsebenzo elindelekileyo (okukhutshwayo)	Ngokwethagethi
	Uxanduva lwesalathi	USekela-Mphathi
	Umngcipheko ophambili	Iminyaka emalunga neemfuno zeeKhoram zeentlanganiso, nanjengoko amalungu aizingcali ezizimeleyo ezingaqeshwanga leli ziko.
	Indlela yokuwuthomalalisa	Ikhelenda yeentlanganiso ezimiselweyo ivunywa liBhunga ize idluliselwe kwabo bachaphazelekayo kwakunyaka owandulela loo nyaka wokuchotshelwa kwezo ntlanganiso. Imiyalezo ekhumbuzo malunga neentlanganiso eya kukhutshwa ngeveki eyandulela intlanganiso ecwangcisiweyo, ukuze amalungu atsho kwangoko ukuba ayaphumelela na.

2.3	Isihloko sesalathi	Inani leentlanganiso zabasebenzi apho kuthathwa khona izigqibo malunga nezicelo ngokwabameli abasuka kwiBhunga ukuze kuqhubwe iNHRA
	Ingcaciso emfutshane	Iintlanganiso ezimiselweyo zamaGosa ezaMafa emveli apho kuthathwa khona izigqibo ngokwabathunywa beBhunga.
	Injongo/ukubaluleka	Ukulandelela izicelo nokuthatha izigqibo ngokwabathunywa beentlanganiso zamaGosa ezaMafa eMveli
	Umthombo/ukuqokelelwa kwedatha	Imihla yeentlanganiso ezimiselweyo, amaphepha obhaliso lwabakhoyo, iijenda nemizuzu yeentlanganiso.
	Indlela yokubalwa	Ukubala okulula
	Imida yedatha	Izicelo ezingagqitywanga
	Uhlobo lwesalathi	Isalathi sezinto ekuphunywa nazo
	Uhlobo lokubala	Oluqhubelekayo
	Umjikelelo owokunikwa kwengxelo	Ngekota
	Isalathi esitsha	Asikho
	Intsebenzo elindelekileyo (okukhutshwayo)	Ngokwethagethi
	Uxanduva lwesalathi	USekela-Mphathi
	Umngcipheko ophambili	Ukungakwazi kwamaGosa ezaMafa emveli ukusoloko echophela iintlanganiso ezicwangcisiweyo ngenxa yoxinzelelo kunye nogxalathelwano lwezicelo ekufuneka ejongene nazo.
	Indlela yokuwuthomalalisa	Imivulo ibekelwe bucala ukuze amaGosa ezaMafa eMveli akwazi ukujongana nezicelo.

ISIHLOMELO B. UTSHINTSHO KWISALATHI SENJONGO EPHAMBILI

1. Esi salathi senjongo ephambili sikwiAPP ka-2017/2018 sifundeka ngolu hlobo:

1.1 Inani leentlanganiso ezimiselweyo zeBhunga nezeeKomiti ezilungiselelwa ukulawula oovimba bamafa emveli eNtshona Koloni.

1.2 Esi salathi senjongo ephambili sikwiAPP ka-2017/18 (p. 16) sifundeka ngolu hlobo ngoku :

Ukulawulwa kwendlela endindeneyo yokulawulwa koovimba bamafa emveli eNtshona Koloni.

2. Emva keseshoni yokuCwangcisela ukuSebenza kwelifa leMveli leNtshona Koloni kunyaka-mali ka-2017/2018, umbono, umgomo neemfundiso ezisisiseko zeLifa leMveli leNtshona Koloni zitshintshile kwezo zonyaka-mali odlulileyo ukwenzela ukuzilungelelanisa nomsebenzi weSebe nokuba zibonise ngcono injongo yeHWC (jonga apha ngezantsi utshintsho kumbono; umgomo neemfundiso ezisisiseko).

2.1 Umbono ka-2017/2018

Ukubhiyozela, ukugcina ngokukhuselekileyo, ukulungisa nokukhathalela oovimba abahlukeneyo bamafa emveli eedolophu neelali zabantu beNtshona Koloni ngokukhuthaza ukuzingca ngamafa emveli apha thekayo nangabonakaliyo, ngokukodwa ngokubhekiselele kwabo bantu bebesakujongelwa phantsi.

Umbono ka-2018/2019

Ukuchongwa okungalibazisiyo okuquka konke kwakunye nokulawulwa okuzinzileyo koovimba bamafa emveli.

2.2 Umgomo ka-2017/2018

Ngokuqulunqa, ukuqhuba nokugcina isicwangciso-nkqubo esindindeneyo solawulo olusebenzayo loovimba bamafa emveli eNtshona Koloni, ilifa leMveli leNtshona Koloni liya kuqinisekisa ngokuchongwa, ukulawulwa, ukukhuselwa nokwaziswa koovimba bamafa emveli kulo lonke uluntu lwethu nokulungiselela izizukulwana zangoku nezizayo.

Umgomo ka-2018/2019

Ilifa leMveli leNtshona Koloni liqinisekisa ngokuchongwa okundindeneyo, ukulawulwa ngokukuko, ukulondolozwa nokwaziswa koovimba bemveli abagcinelwe izizukulwana zangoku nezizayo.

2.3 limfundiso ezisisiseko 2017/2018

Ukukhathala, ulwazi olupheleleyo, ukuthembeka, ukunyaniseka, ukuza nezinto ezintsha, kunye nokuhlangabezana neemfuno.

limfundiso ezisisiseko 2018/2019

Ukukhathala, ulwazi olupheleleyo, ukuthembeka, ukunyaniseka, ukuza nezinto ezintsha, ukuhlangabezana neemfuno, ukubandakanya konke kunye nentlonipho.

Heritage Western Cape
Protea Assurance Building, Greenmarket Square, Cape Town, 8001
Postal Address: Private Bag X9067, Cape Town, 8000
tel: +27 483 5959 fax: +27 21 483 9845
Email: ceoheritage@westerncape.gov.za

ILifa leMveli leNtshona Koloni
Kwisakhiwo iProtea Assurance, eGreenmarket Square, eKapa, 8001
Idilesi yePosi: Private Bag X9067, Cape Town, 8000
umnxeba: +27 483 5959 ifeksi: +27 21 483 9845
i-imeyile: ceoheritage@westerncape.gov.za

Erfenis Wes-Kaap
Protea Assuransie Gebou, Groentemarkplein, Kaapstad, 8001
Posadres: Privaatsak X9067, Kaapstad, 8000
tel: +27 483 5959 faks: +27 21 483 9845
e-pos: ceoheritage@westerncape.gov.za



**Western Cape
Government**

Cultural Affairs and Sport

PR52/2018 - ISBN: 978-0-621-46150-3