



Western Cape
Government

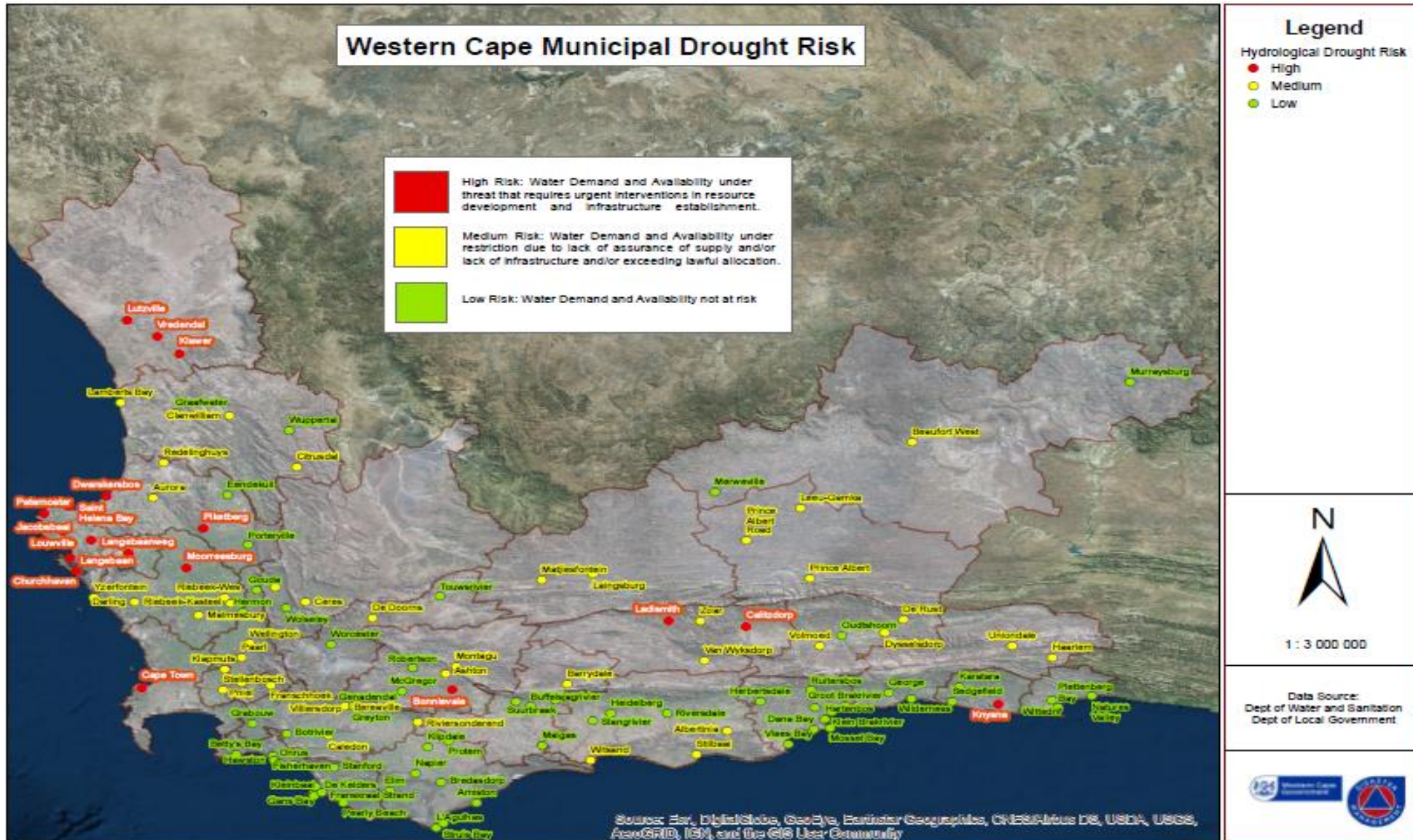
BETTER TOGETHER.

BUSINESS CONTINUITY PLANNING FOR WATER SHORTAGES & OUTAGES

Helen Davies
Department of Economic Development & Tourism

20 March 2018

Drought status across the Western Cape – Municipalities & Towns



Red - 'high risk' municipalities / towns reflect where the urban water demand is outstripping the sustainable supply

Yellow - may highlight medium risk, *but* demand is becoming dangerously close to threatening supply

WC state of dams 18.97%

City of Cape Town disaster phases



WE ARE HERE



- LEVEL 6B Restrictions – 1 Feb 2018
- Phase 1 characterised by reducing demand, water rationing through limiting supply & advanced pressure mgt.

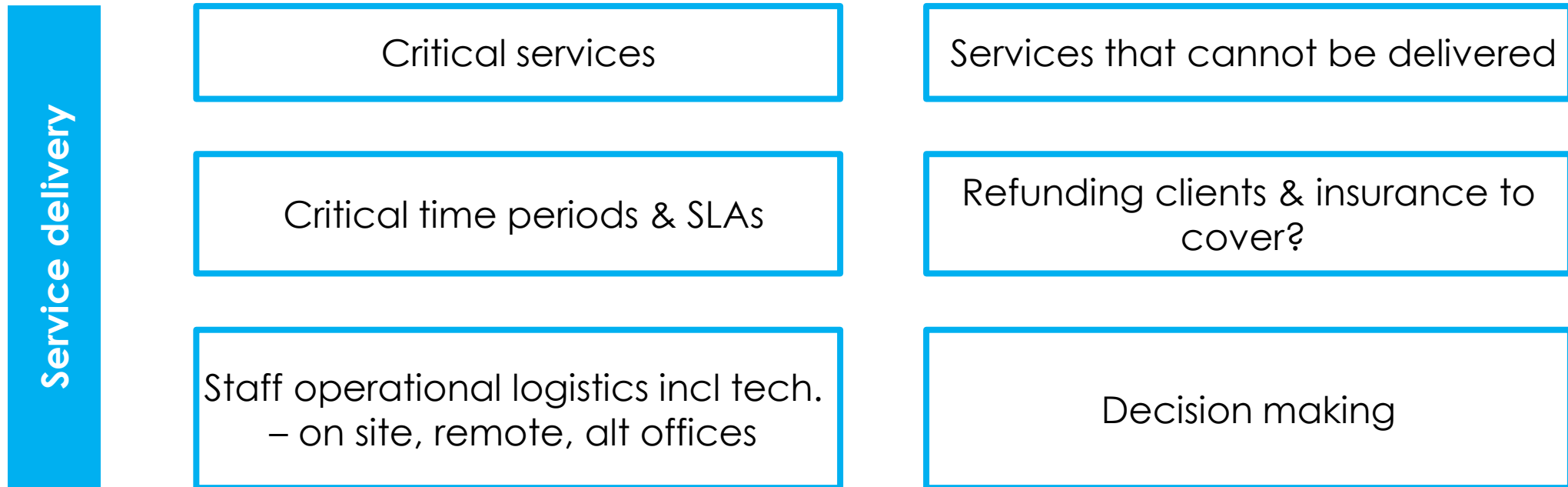
- Triggered at 13.5% surface water levels of the WCWSS6 largest dams
- Switch off water system of most residential areas
- Collection of water (25lpppd) from PODs
- All private, public and military health facilities, public schools & other critical services will be provided with water
- Maintain water to strategic economic nodes & bulk water made available to businesses ex nodes

Regional contingency planning

- Aim - avoid Day Zero by stretching water resources until winter's rainfall
- City (2018) - reduced consumption; (2019) reduced consumption & supply augmentation
- Municipalities (2018 & beyond) – reduced consumption & supply augmentation
- Contingency plans for municipalities (& some towns) – under development - Provincial Disaster Management Centre.
- **Each business needs to develop its own Business Continuity Plan (BCP)**
- Good BCP - often helps identify additional areas of water saving
- Some elements of BCP needed with water restrictions & low water pressure – i.e. not only Day Zero
- Current status - any investment in implementing a BCP - focus on supporting medium – long term water resilience given climate change etc.

Developing a BCP

- BCP guideline on <https://www.westerncape.gov.za/110green/water>
- To help avoid day zero – everything possible to reduce usage (while maintaining operations) – water management plan & audit regularly
- Develop BCP for phase 2 & 3 of disaster - escalates for each phase of disaster management



Developing a BCP cont.

Water demand

Water saving actions

Water intensive facilities – shut / scale down (e.g. air con)

Check water supply systems (pumps & storage)

Water use – critical services

Shut off water systems dependent on water flow – min. damage

Move planned maintenance forward

Staff

Staff – who on site, home, flexi

Managing deliverables & hours

Awareness – emergency plan

Reassigning functions

Negotiate changes

Financial assistance

Developing a BCP cont.

Drinking water & sanitation

Drinking water & sanitation – on & off site

Enabling water collection

Staff household water

Minimise sanitation blockages

Facilities management

Tenant needs

Natural ventilation

Cleaning staff – hours & conditions

Hand sanitizers – high traffic

Communication

Communication plan – staff, suppliers, clients

Staff awareness - regular

Communications rollout – channels, frequency, timing

Supplier BCPs

Developing a BCP

Safety & security

Process equipment switch offs / protection

Fire management system – pressure & storage

Site protection – working hours & water on site

Insurance risks

General

BCP readiness test

Staff contacts

Finance procedures / systems / sign offs

Lead times of equipment

WCG BCP progress

- All 13 WCG departments & 4 entities have BCPs (some draft)
- WCG Department of Health has developed BCPs with all hospitals
- A few depts. have done dry-runs - key lesson learnt from dry runs: Each BCP needs to include an effective call tree – i.e. who calls who and for what.

Water Crisis Economic Impact Analysis Survey

Engagements

QID	<input type="text"/>	Water savings achieved (kl/month) in the last 1 year	<input type="text"/>	Support needed by the business to ensure its survival in the crisis	<input type="text"/>
Date of new entry/ update	<input type="text"/>	Water savings achieved (%) in the last 1 year	<input type="text"/>	Any opportunities as a result of the drought	<input type="text"/>
District municipality	<input type="text"/>	Not municipal water supplies i.e. no potable (e.g. boreholes, desalination, treated waste water, rainwater tanks)	<input type="text"/>	Does the business' SA or global network support the business' water resilience planning in any way?	<input type="text"/>
Name of organisation	<input type="text"/>	Has your business considered using or implemented onsite re-use of water (greywater re-use and process water re-use)?	<input type="text"/>	Business continuity planning for a possible day zero – i.e. SEVERE water rationing / shedding	<input type="text"/>
Town/city	<input type="text"/>	What is the risk to your business's survival should water availability be decreased by 45%, 80% or if there is no water (please quantify where possible) in respect of:		Willing to be a case study?	<input type="text"/>
Does the business have further branches / offices in other parts of SA or globally?	<input type="text"/>	*Scaling down of production		FOR INTERNAL USE ONLY	
Contact person	<input type="text"/>	*Quality of production		Date of engagement	<input type="text"/>
Contact number	<input type="text"/>	*Loss of turnover		Nature of engagement	<input type="text"/>
Mobile number	<input type="text"/>	*Loss of Jobs		Lead organisation	<input type="text"/>
Email address	<input type="text"/>	*Postponement / cancellation of new investments / orders / bookings		Lead person	<input type="text"/>
Website	<input type="text"/>	*Loss in competitiveness		Supported by	<input type="text"/>
Number of employees:		*Loss of customers		Key issues	<input type="text"/>
Permanent	<input type="text"/>	*Loss of Exports		Outcome/ way forward	<input type="text"/>
Contract	<input type="text"/>	*Closure		Outstanding Matters	<input type="text"/>
Seasonal	<input type="text"/>				
Sector/ organisation type	<input type="text"/>	Is business confidence currently being affected	<input type="text"/>		
Water consumption (kl/month)	<input type="text"/>	Any potential impact of the water crisis on the business' value chain	<input type="text"/>		
Water savings target and target year	<input type="text"/>	Length business can sustain its operations at the current rate of water restrictions (Indicate time in months or years)	<input type="text"/>		
Water savings actions implemented	<input type="text"/>				
Please indicate approximately when these were implemented – i.e. since 2010, last 2 years etc.	<input type="text"/>				
Cost of interventions / actions to date	<input type="text"/>				
Water savings actions planned	<input type="text"/>				



Thank You



**Western Cape
Government**

BETTER TOGETHER.

Helen Davies

Chief Director: Green Economy

Department of Economic Development & Tourism

Tel: +27 (21) 483 7845

Email: Helen.davies@westerncape.gov.za

www.westerncape.gov.za