

## ELECTRICITY CONSUMPTION

# 1 kWh

Electricity production and consumption is often measured in units of kilowatt hours (kWh). When a machine consumes 1 kWh, it has been running at a rate of 1000 watts for a period of 1 hour. It means the amount of electricity consumed is directly related to the wattage of appliances

## WHAT CAN I DO WITH 1 kWh?

WATCH  FOR 6 AND A HALF HOURS

BAKE A CAKE IN AN  FOR 1 HOUR

KEEP  ON FOR 5 AND A HALF HOURS

WASH ONE 5 KG LOAD OF LAUNDRY

## HOW MUCH ELECTRICITY DOES THE AVERAGE PERSON CONSUME EVERY YEAR?

ELECTRICITY CONSUMPTION PER CAPITA



## HOW MUCH ELECTRICITY COMMON HOUSEHOLD APPLIANCES CONSUME?



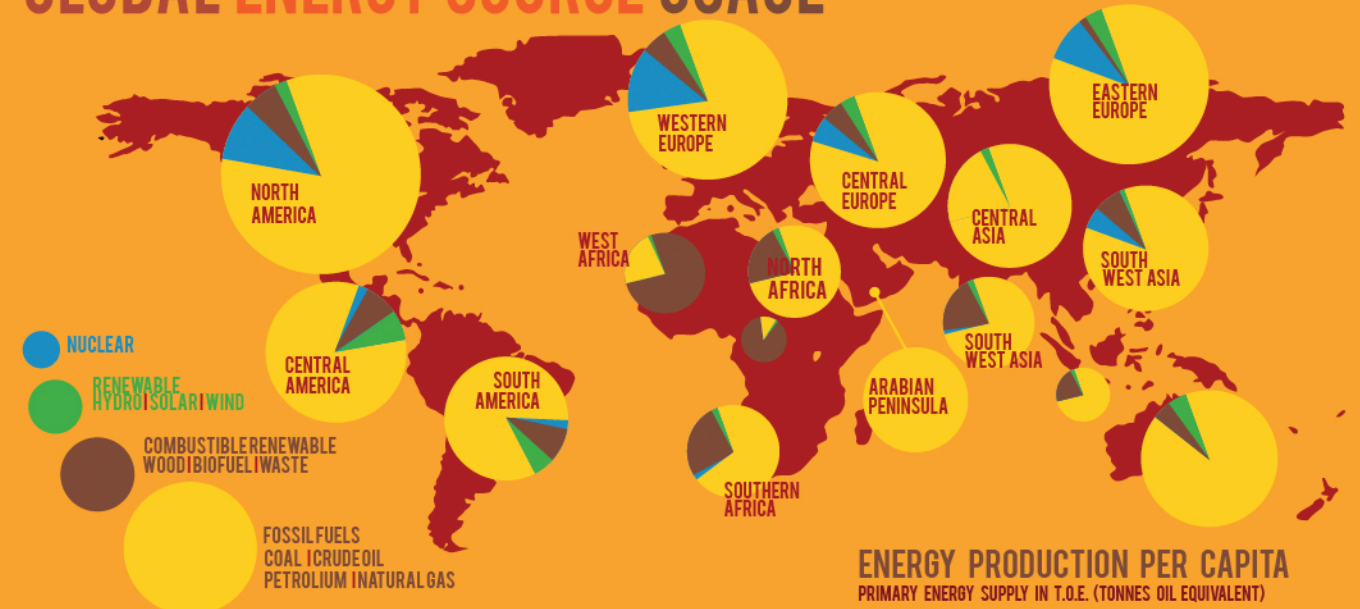
SOURCE: UNEP

## ELECTRICITY PRODUCTION

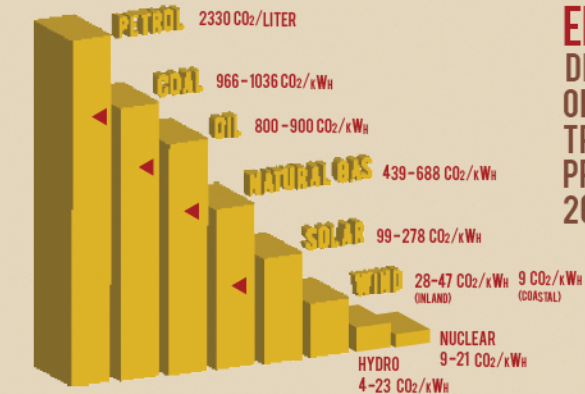
## ENERGY SOURCES



## GLOBAL ENERGY SOURCE USAGE



## CO<sub>2</sub> EMISSIONS FROM ELECTRICITY PRODUCTION & FUEL COMBUSTION



EMISSIONS DEPEND ON EFFICIENCY OF TECHNOLOGY USED  
TRIANGLES (◀) SHOW PROJECTIONS FOR 2005-2020 TECHNOLOGY

SOURCE: UNEP