



DEPARTMENT OF RURAL DEVELOPMENT AND LAND REFORM



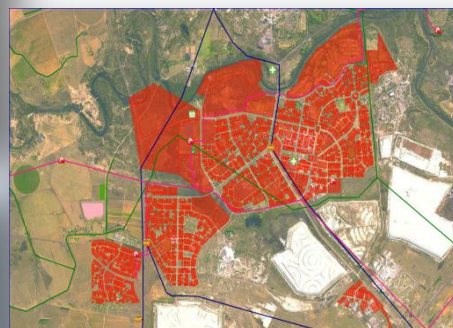
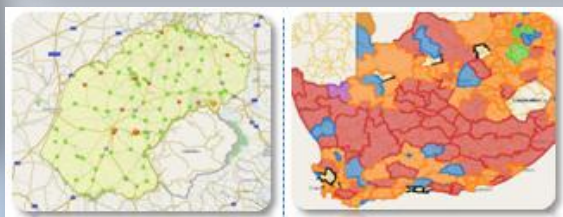
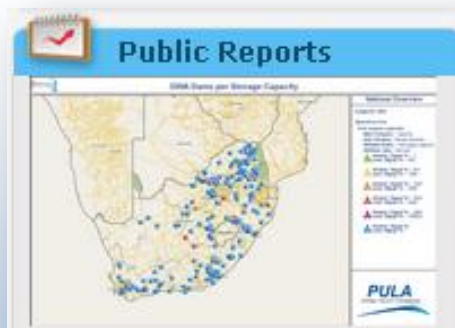
INTEGRATED SPATIAL INFORMATION MANAGEMENT SYSTEM FOR THE FREE STATE PROVINCE

RDLR-0065 (2010-2011)

REPORT TITLE

**Spatial Development Framework
Xhariep District Municipality**

06 June 2012 (Version 1)



Prepared for:

Department Rural Development & Land Reform
Chief Directorate: Spatial Planning & Information
Flaxley House 301, Du Toitspan rd. Kimberley, 8301

Prepared by:

PULA strategic resource management
Monument Office Park, Pretoria
Omni Building, 73 Aliwal str. Bloemfontein
P.O. Box 2354, Brooklyn Square, 0075



CONTENTS

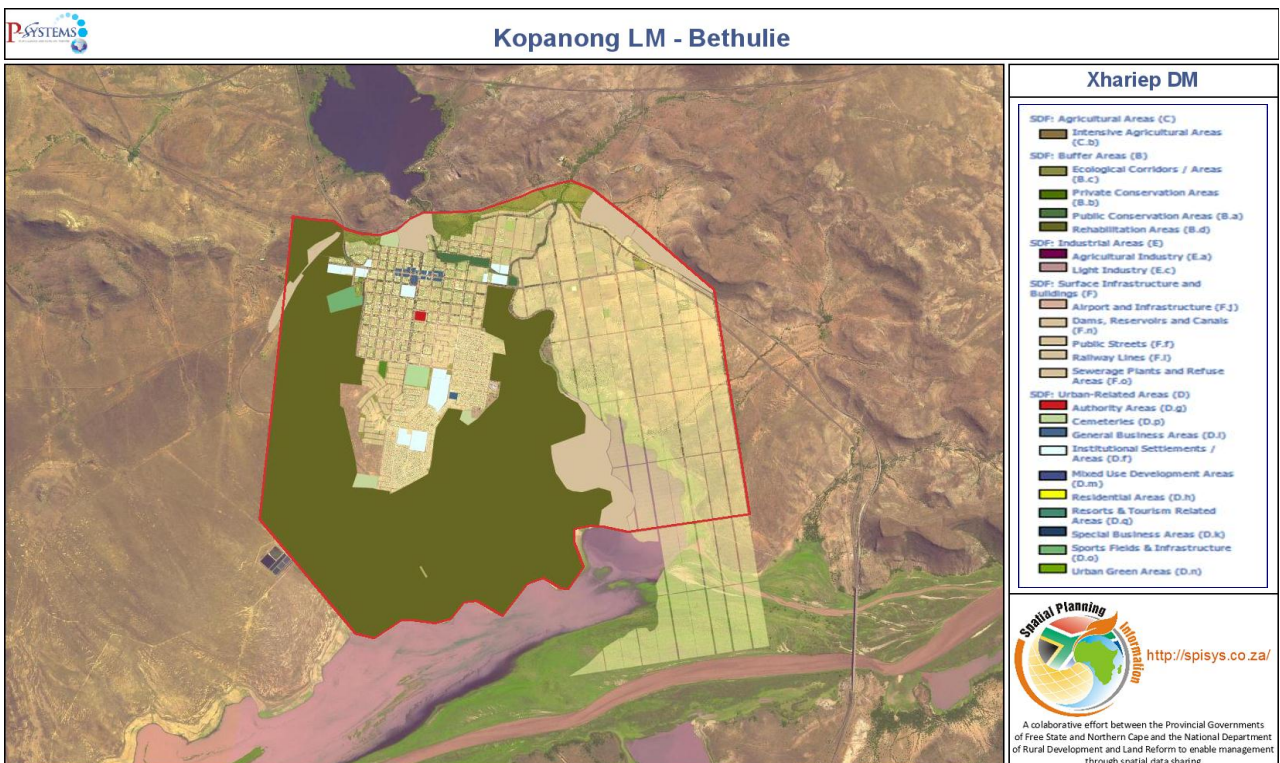
1	SPATIAL DEVELOPMENT FRAMEWORK.....	3
1.1	Kopanong Local Municipality	3
1.2	Mohokare Local Municipality	8
1.3	Naledi Local Municipality	10
1.4	Letsemeng Local Municipality.....	12

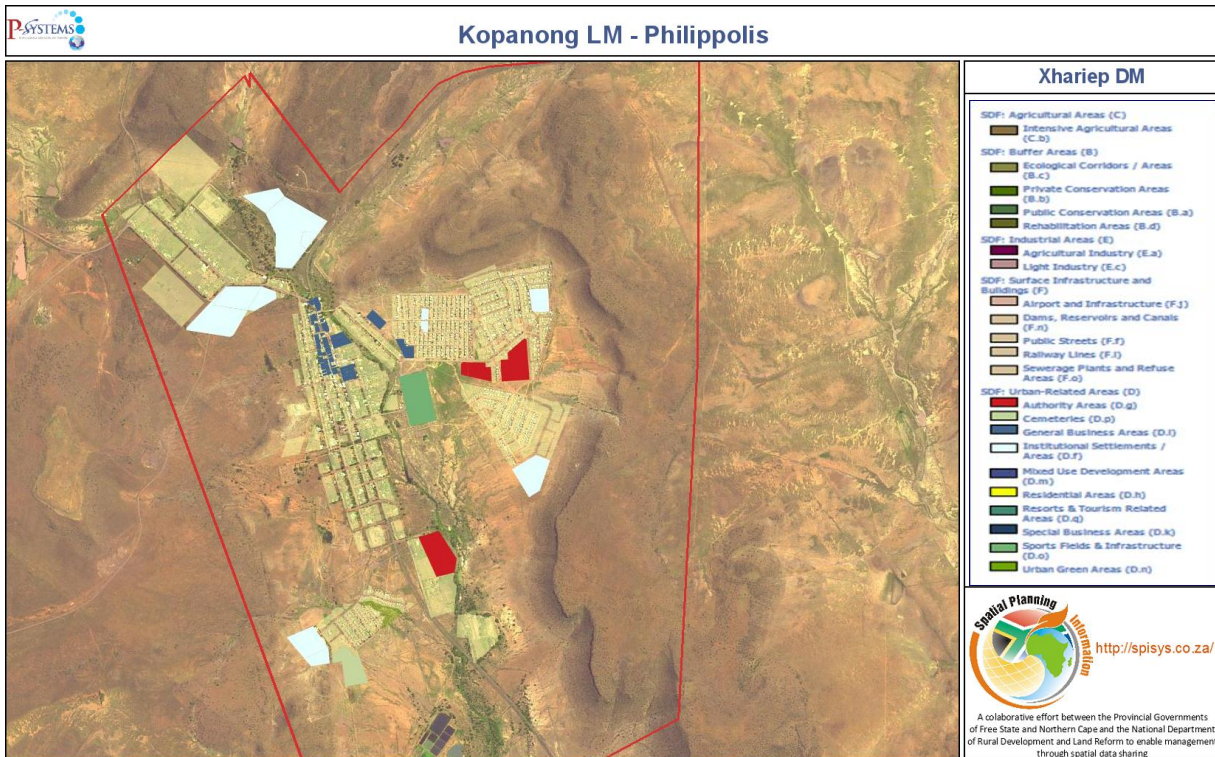
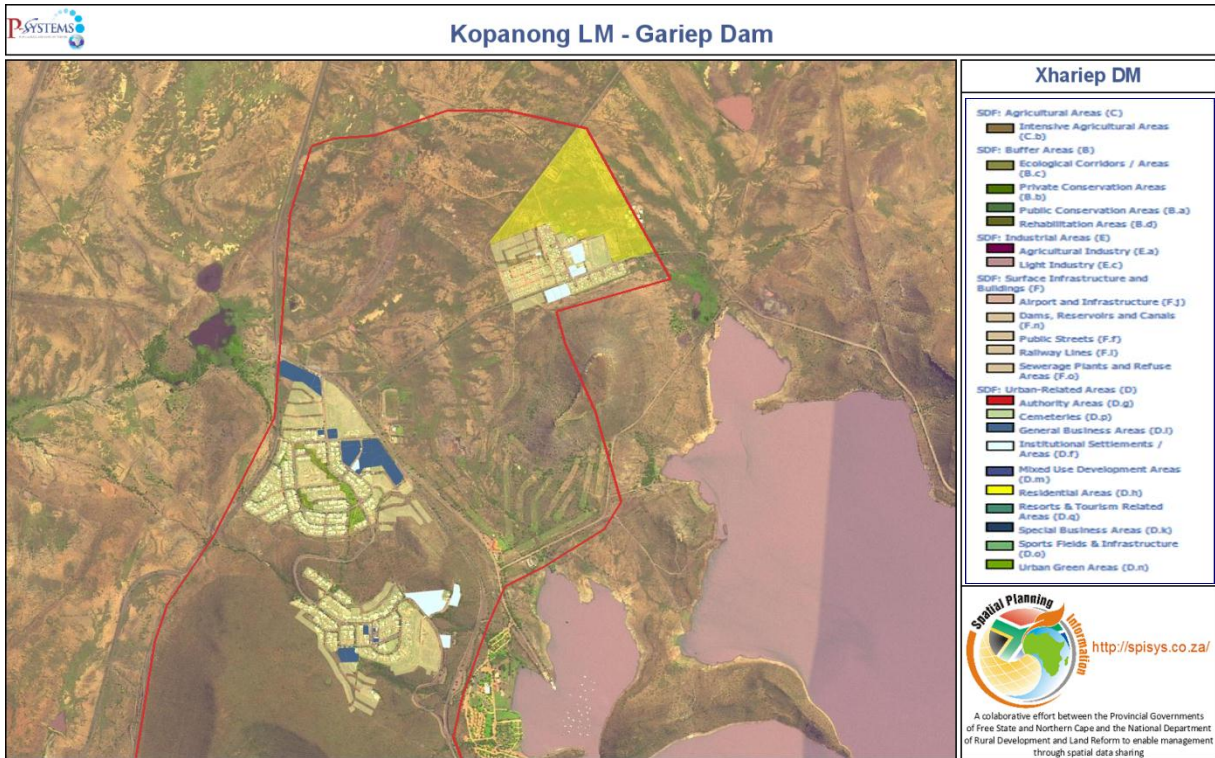


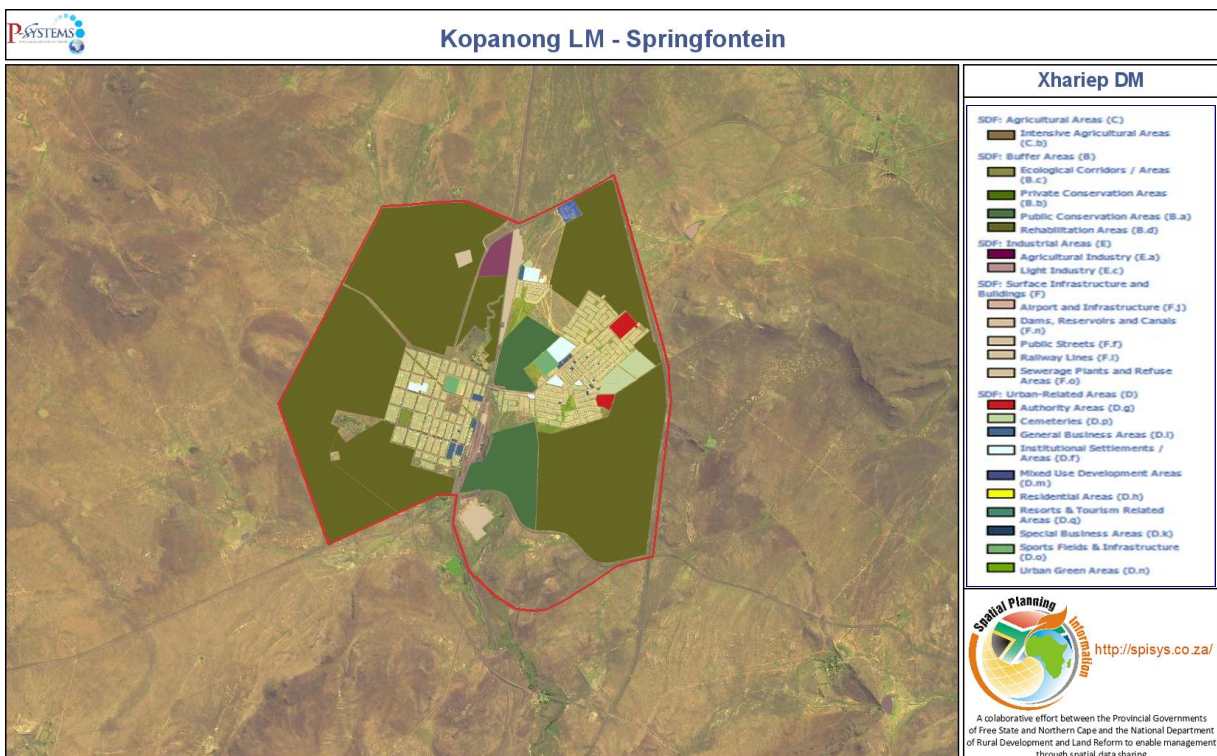
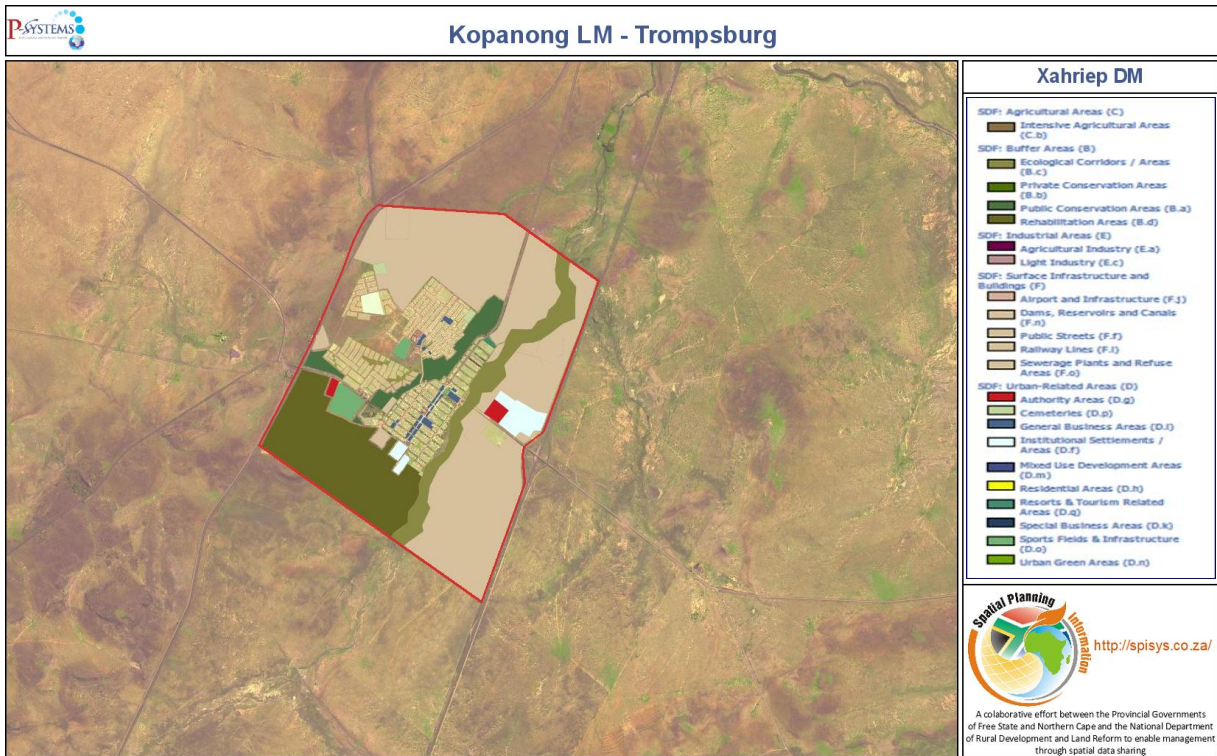
1 Spatial Development Framework

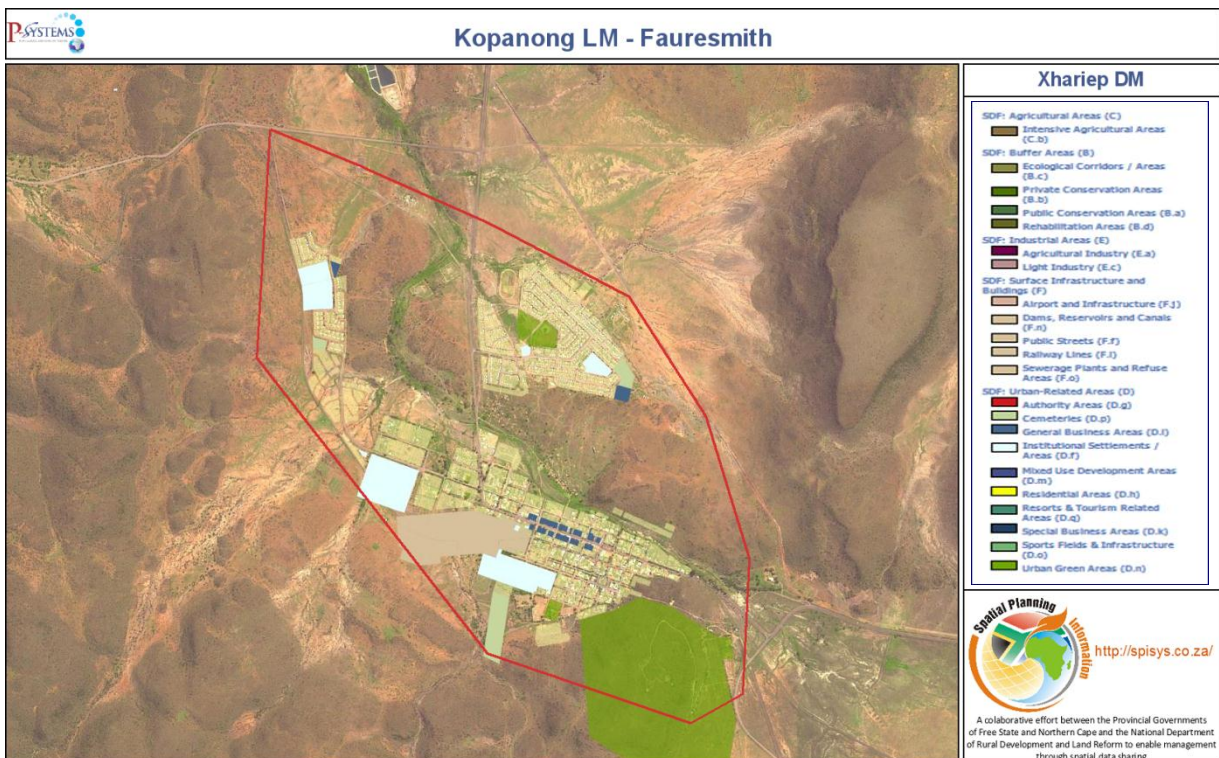
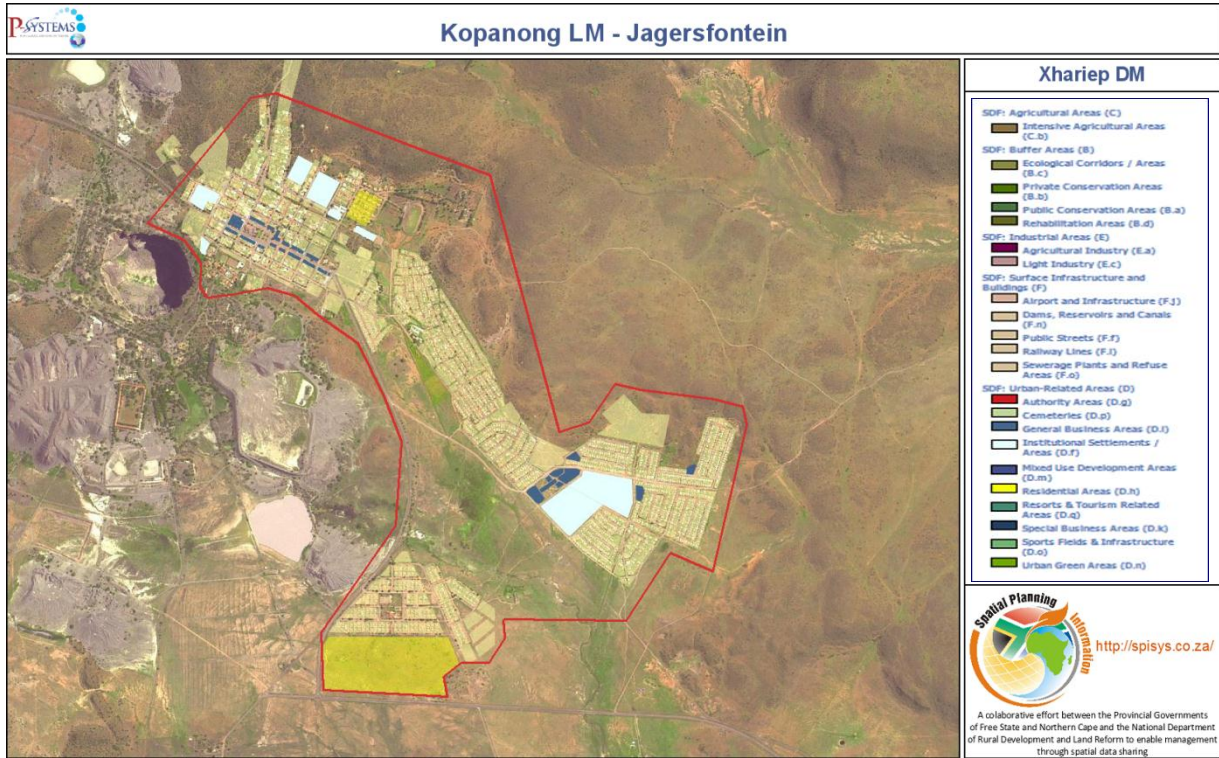
1.1 Kopanong Local Municipality

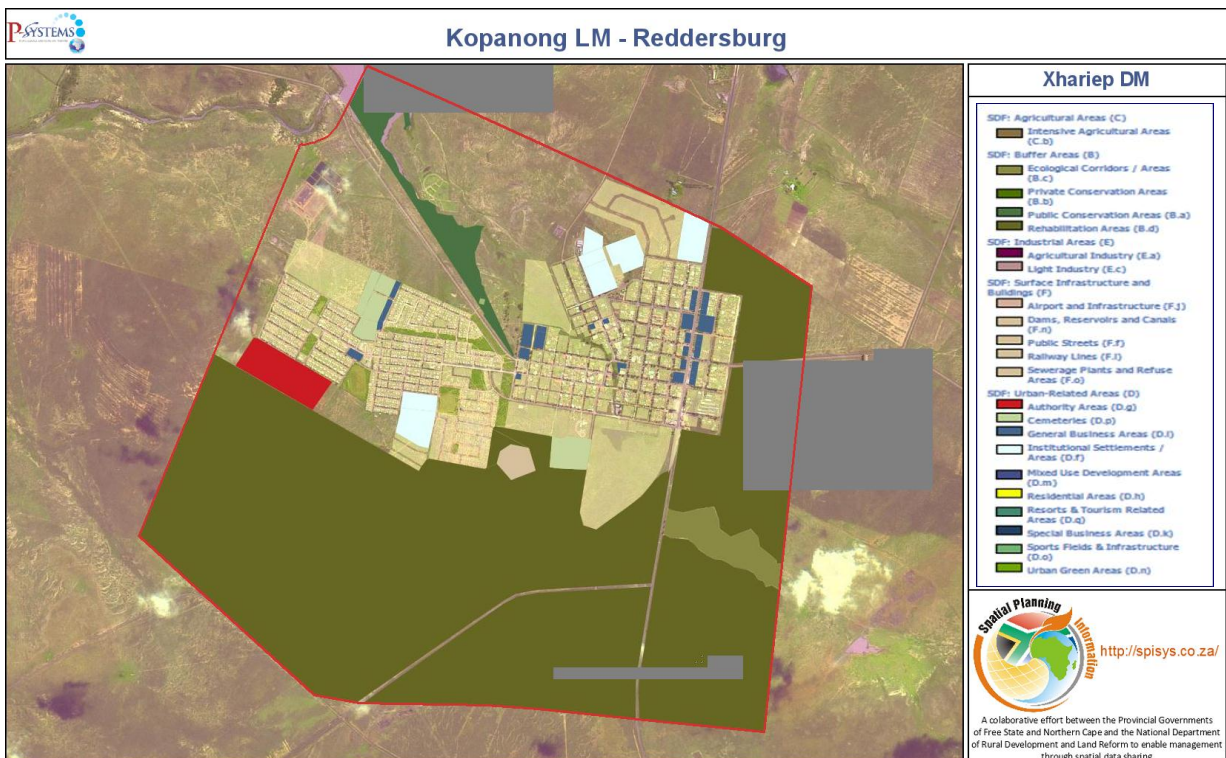
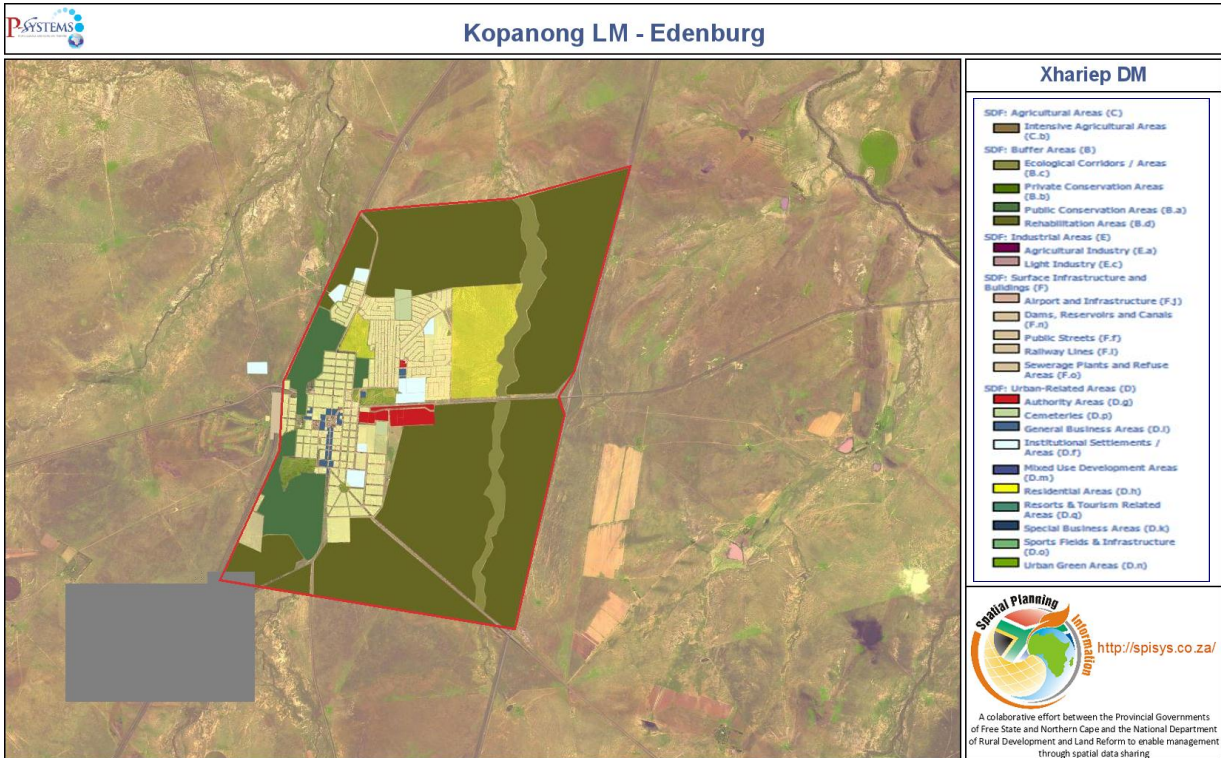
Spatial Development Layer	Areas	Hectares	M ²
SDF: Buffer Areas (B) -> Ecological Corridors / Areas (B.c)	4	24755.44056	247554405.6
SDF: Buffer Areas (B) -> Rehabilitation Areas (B.d)	27	82087.08862	820870886.2
SDF: Agricultural Areas (C) -> Extensive Agricultural Areas (C.a)	6	120165.7871	1201657871
SDF: Agricultural Areas (C) -> Intensive Agricultural Areas (C.b)	6	151947.1378	1519471378
SDF: Industrial Areas (E) -> Industrial Development Zone (E.b)	1	159165.4068	1591654068
SDF: Surface Infrastructure and Buildings (F) -> Dams Reservoirs and Canals (F.n)	4	22769.22291	227692229.1
SDF: Surface Infrastructure and Buildings (F) -> Railway Lines (F.i)	18	44728.24502	447282450.2
SDF: Surface Infrastructure and Buildings (F) -> Sewerage Plants and Refuse Areas (F.o)	6	86557.71769	865577176.9
SDF: Urban-Related Areas (D) -> Rural Settlements (D.d)	1	95268.84449	952688444.9
SDF: Urban-Related Areas (D) -> Institutional Settlements / Areas (D.f)	92	69413.3443	694133443
SDF: Urban-Related Areas (D) -> Authority Areas (D.g)	21	28520.94495	285209449.5
SDF: Urban-Related Areas (D) -> Residential Areas (D.h)	21886	47166.437	471664374.6
SDF: Urban-Related Areas (D) -> Future Residential Areas (D.h)	13	134.0151431	1340151.431
SDF: Urban-Related Areas (D) -> General Business Areas (D.i)	653	3.73851	37385.1
SDF: Urban-Related Areas (D) -> Future General Business Areas (D.i)	2	2.159270617	21592.70617
SDF: Urban-Related Areas (D) -> Urban Green Areas (D.n)	102	55076.61785	550766178.5
SDF: Urban-Related Areas (D) -> Sports Fields & Infrastructure (D.o)	8	62007.58308	620075830.8
SDF: Urban-Related Areas (D) -> Cemeteries (D.p)	24	56840.92237	568409223.7
SDF: Urban-Related Areas (D) -> Resorts & Tourism Related Areas (D.q)	1	0.942892612	9428.926116





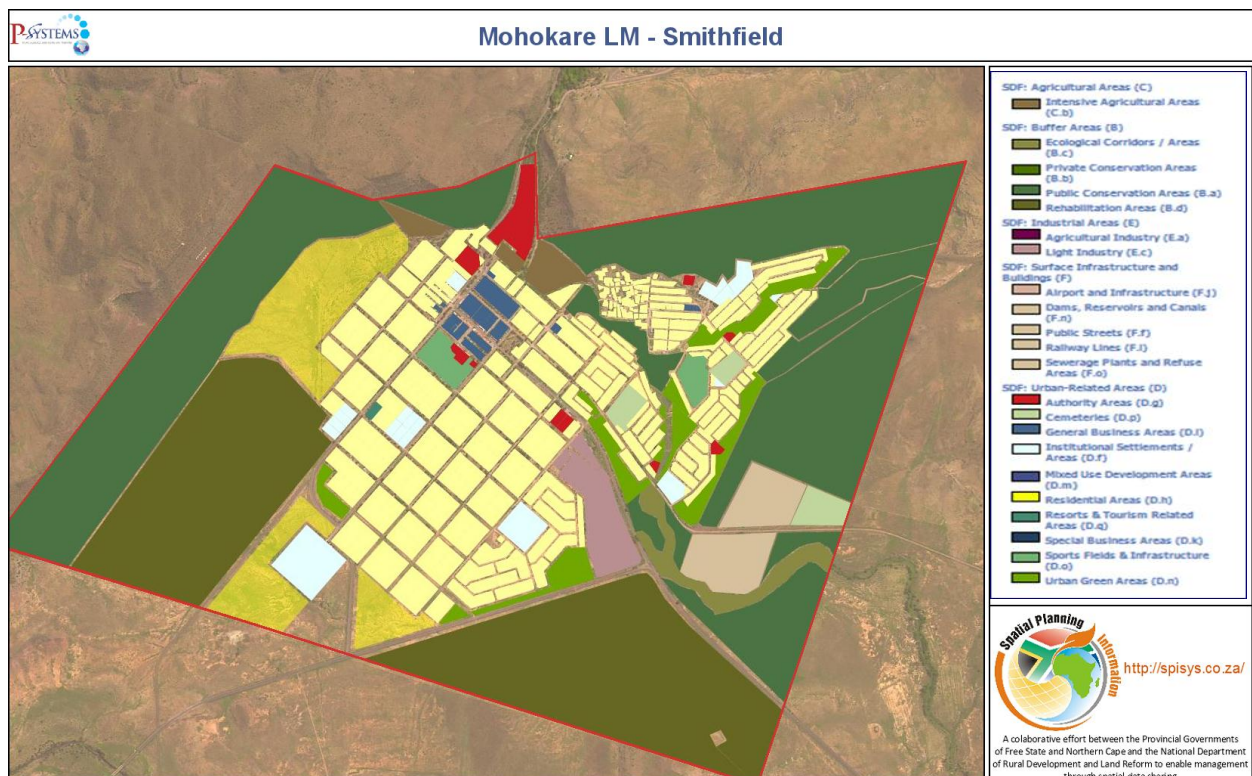






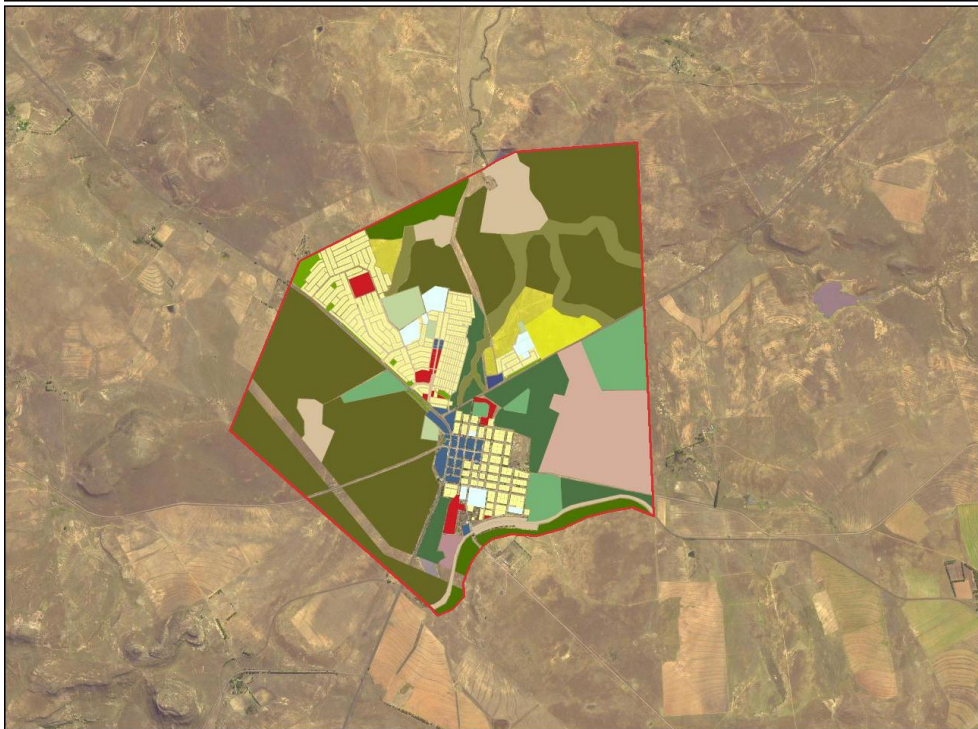
1.2 Mohokare Local Municipality

Spatial Development Layer	Areas	Hectares	M ²
SDF: Buffer Areas (B) -> Rehabilitation Areas (B.d)	22	93991.5958	939915958
SDF: Agricultural Areas (C) -> Intensive Agricultural Areas (C.b)	17	12980.40688	129804068.8
SDF: Industrial Areas (E) -> Agricultural Industry (E.a)	9	1.725410749	17254.10749
SDF: Industrial Areas (E) -> Light Industry (E.c)	110	26877.32931	268773293.1
SDF: Urban-Related Areas (D) -> Authority Areas (D.g)	107	82808.10801	828081080.1
SDF: Urban-Related Areas (D) -> Cemeteries (D.p)	18	13625.98718	136259871.8
SDF: Urban-Related Areas (D) -> Institutional Settlements / Areas (D.f)	136	79924.97436	799249743.6
SDF: Urban-Related Areas (D) -> Residential Areas (D.h)	12142	20784.76822	207847682.2
SDF: Urban-Related Areas (D) -> Future Residential Areas (D.h)	4	46.48120293	464812.0293
SDF: Urban-Related Areas (D) -> General Business Areas (D.i)	640	89892.21742	898922174.2
SDF: Urban-Related Areas (D) -> Special Business Areas (D.k)	1	97428.29786	974282978.6
SDF: Urban-Related Areas (D) -> Mixed Use Development Areas (D.m)	42	8801.812175	88018121.75
SDF: Urban-Related Areas (D) -> Urban Green Areas (D.n)	69	67004.99438	670049943.8
SDF: Urban-Related Areas (D) -> Sports Fields & Infrastructure (D.o)	25	22318.54642	223185464.2
SDF: Urban-Related Areas (D) -> Resorts & Tourism Related Areas (D.q)	2	125961.0073	1259610073
SDF: Surface Infrastructure and Buildings (F) -> Public Streets (F.f)	15	0.527309031	5273.090315
SDF: Surface Infrastructure and Buildings (F) -> Railway Lines (F.i)	10	25803.41275	258034127.5
SDF: Surface Infrastructure and Buildings (F) -> Airport and Infrastructure (F.j)	1	44202.97377	442029737.7
SDF: Surface Infrastructure and Buildings (F) -> Dams Reservoirs and Canals (F.n)	4	22209.09766	222090976.6
SDF: Surface Infrastructure and Buildings (F) -> Sewerage Plants and Refuse Areas (F.o)	6	11882.35888	118823588.8





Mohokare LM-Rouxville



Xhariep DM

- SDF: Agricultural Areas (C)
- Intensive Agricultural Areas (C.b)
- SDF: Buffer Areas (B)
- Ecological Corridors / Areas (B.c)
- Private Conservation Areas (B.b)
- Public Conservation Areas (B.a)
- Rehabilitation Areas (B.d)
- SDF: Industrial Areas (E)
- Agricultural Industry (E.a)
- Light Industry (E.c)
- SDF: Surface Infrastructure and Buildings (F)
- Airport and Infrastructure (F.j)
- Dams, Reservoirs and Canals (F.n)
- Public Streets (F.f)
- Railway Lines (F.i)
- Sewerage Plants and Refuse Areas (F.o)
- SDF: Urban-Related Areas (D)
- Authority Areas (D.q)
- Cemeteries (D.p)
- General Business Areas (D.j)
- Institutional Settlements / Areas (D.f)
- Mixed Use Development Areas (D.m)
- Residential Areas (D.h)
- Resorts & Tourism Related Areas (D.g)
- Special Business Areas (D.k)
- Sports Fields & Infrastructure (D.o)
- Urban Green Areas (D.n)

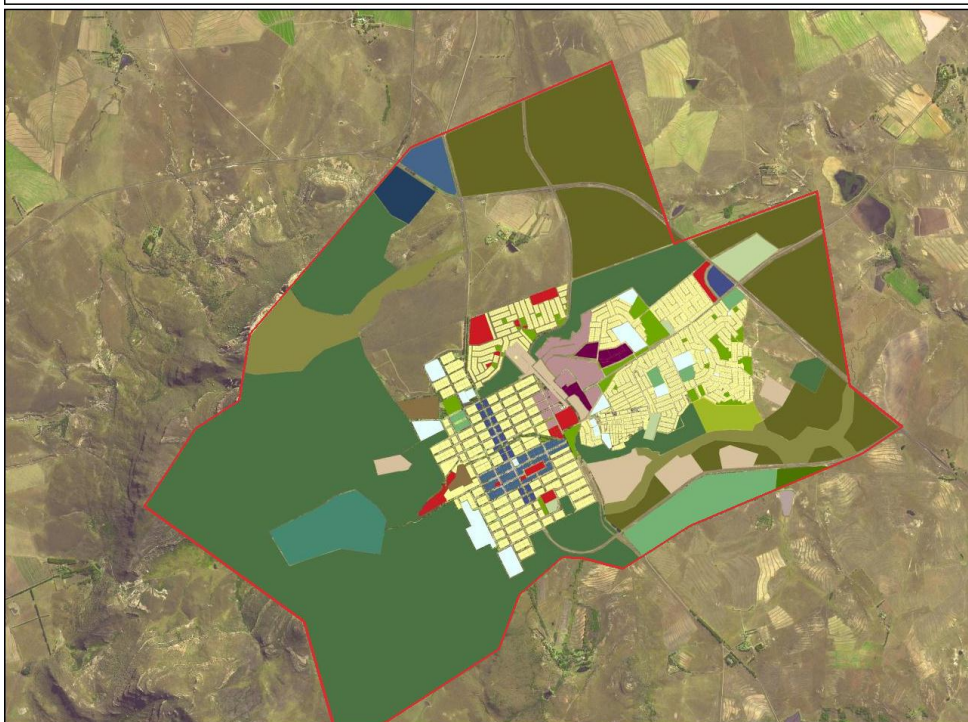


<http://spisys.co.za/>

A collaborative effort between the Provincial Governments of Free State and Northern Cape and the National Department of Rural Development and Land Reform to enable management through spatial data sharing.



Mohokare LM - Zastron



- SDF: Agricultural Areas (C)
- Intensive Agricultural Areas (C.b)
- SDF: Buffer Areas (B)
- Ecological Corridors / Areas (B.c)
- Private Conservation Areas (B.b)
- Public Conservation Areas (B.a)
- Rehabilitation Areas (B.d)
- SDF: Industrial Areas (E)
- Agricultural Industry (E.a)
- Light Industry (E.c)
- SDF: Surface Infrastructure and Buildings (F)
- Airport and Infrastructure (F.j)
- Dams, Reservoirs and Canals (F.n)
- Public Streets (F.f)
- Railway Lines (F.i)
- Sewerage Plants and Refuse Areas (F.o)
- SDF: Urban-Related Areas (D)
- Authority Areas (D.q)
- Cemeteries (D.p)
- General Business Areas (D.j)
- Institutional Settlements / Areas (D.f)
- Mixed Use Development Areas (D.m)
- Residential Areas (D.h)
- Resorts & Tourism Related Areas (D.g)
- Special Business Areas (D.k)
- Sports Fields & Infrastructure (D.o)
- Urban Green Areas (D.n)

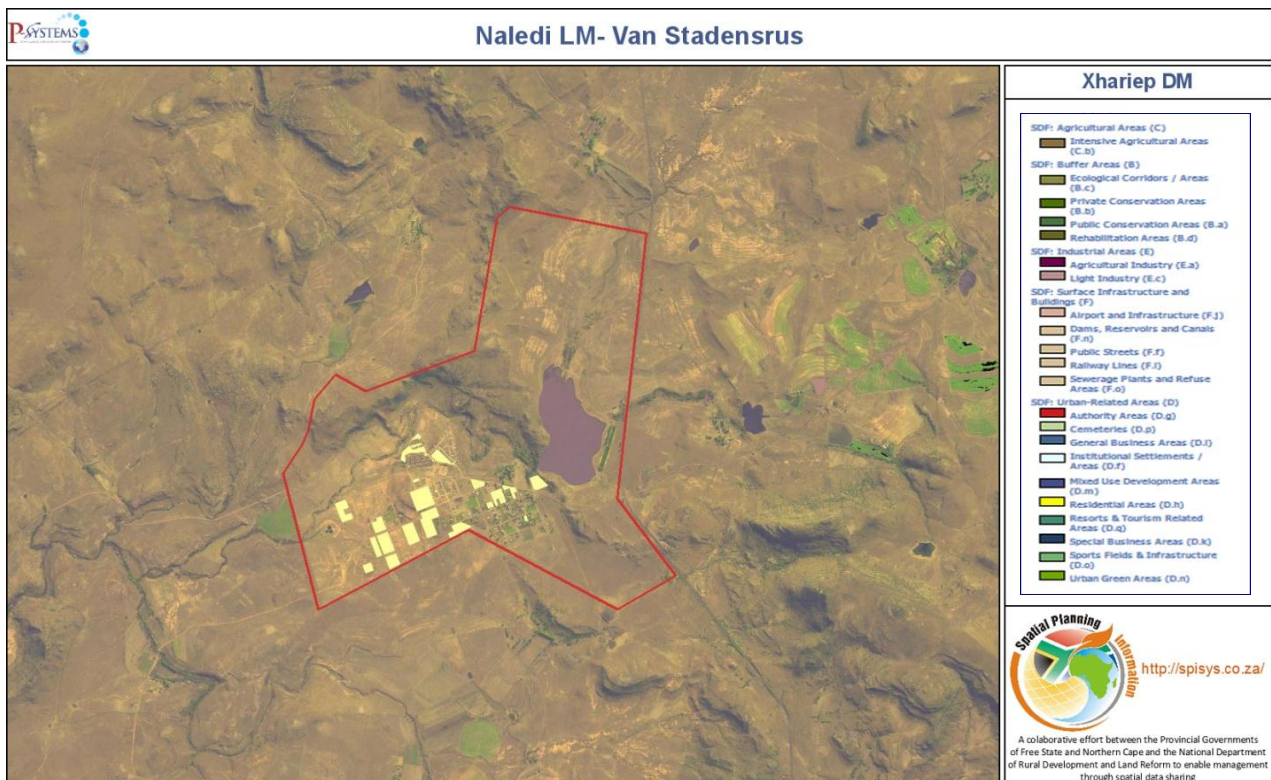


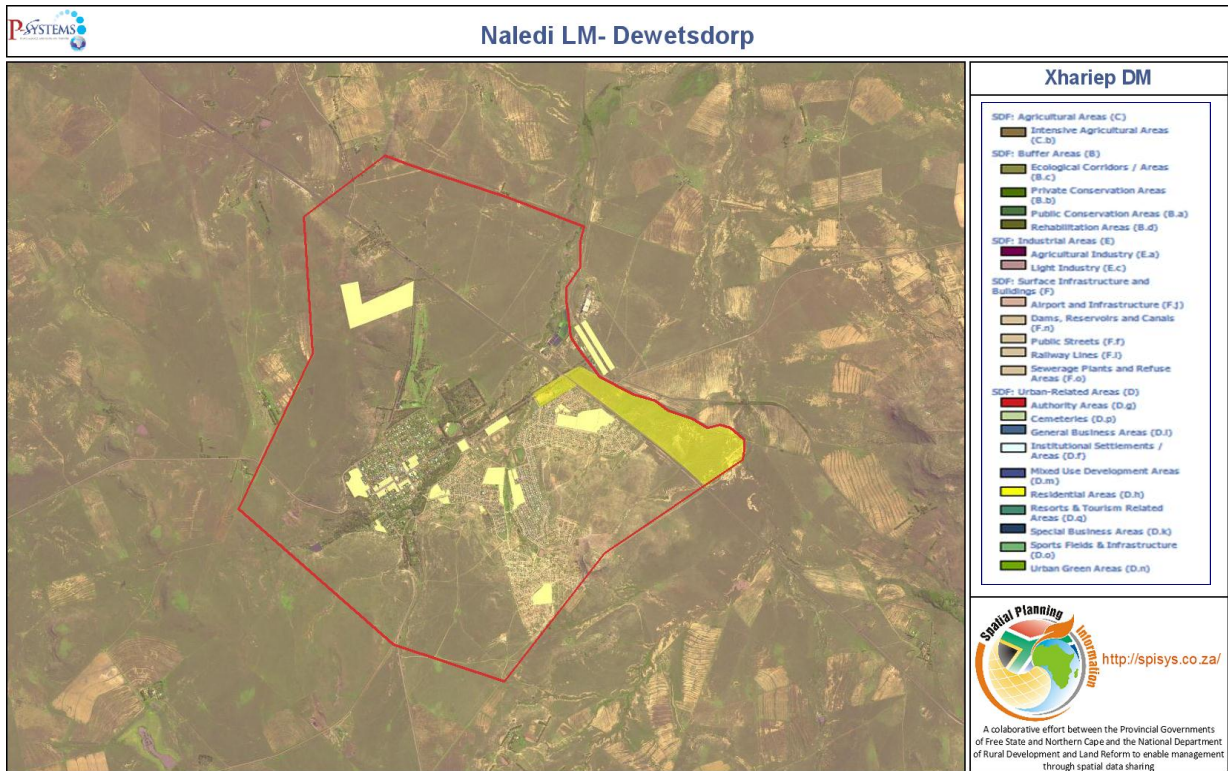
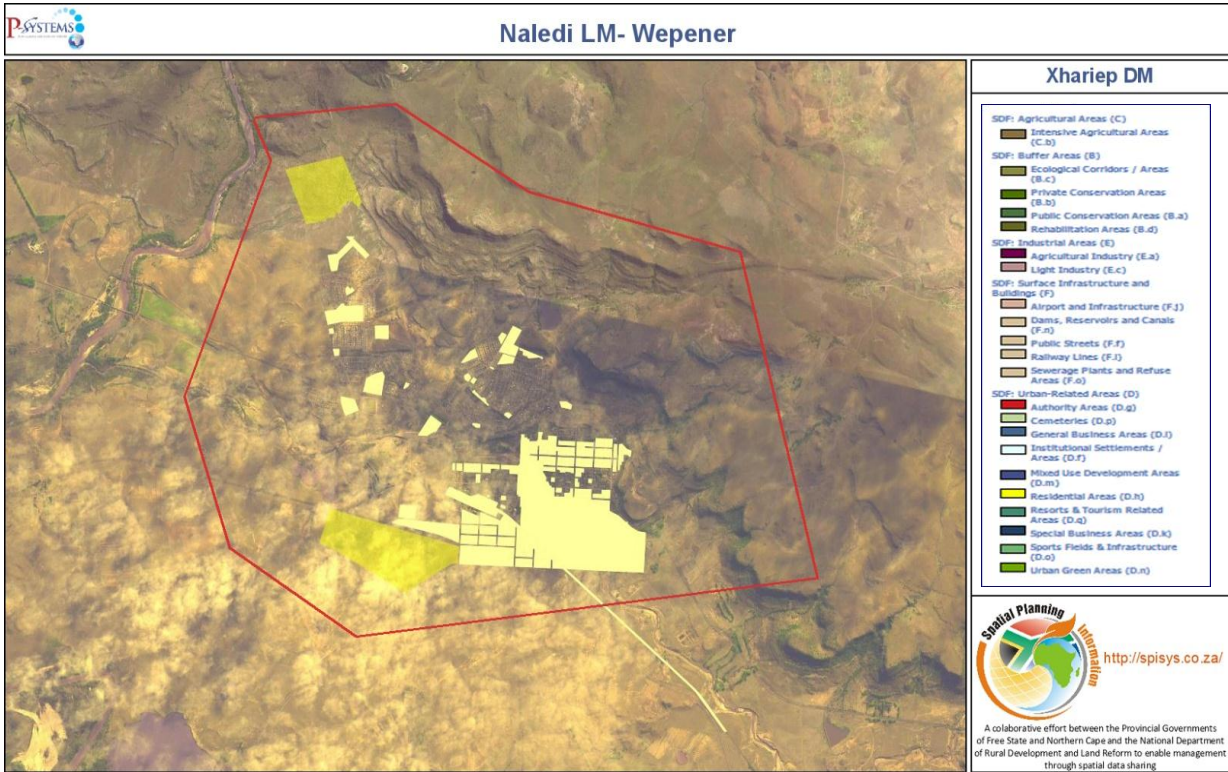
<http://spisys.co.za/>

A collaborative effort between the Provincial Governments of Free State and Northern Cape and the National Department of Rural Development and Land Reform to enable management through spatial data sharing.

1.3 Naledi Local Municipality

Spatial Development Layer	Areas	Hectares	M ²
SDF: Urban-Related Areas (D) -> Cemeteries (D.p)	2	2.477062613	24770.62613
SDF: Urban-Related Areas (D) -> Residential Areas (D.h)	582	143939.8909	1439398909
SDF: Urban-Related Areas (D) -> Future Residential Areas (D.h)	10	58.82515958	588251.5958
SDF: Urban-Related Areas (D) -> Sports Fields & Infrastructure (D.o)	5	1.358284485	13582.84485
SDF: Urban-Related Areas (D) -> Urban Green Areas (D.n)	6	15.38796495	153879.6495





1.4 Letsemeng Local Municipality

Spatial Development Layer	Areas	Hectares	M ²
SDF: Industrial Areas (E) -> Light Industry (E.c)	76	1.388517203	13885.17203
SDF: Surface Infrastructure and Buildings (F) -> Railway Lines (F.i)	5	0.939559531	9395.595314
SDF: Surface Infrastructure and Buildings (F) -> Sewerage Plants and Refuse Areas (F.o)	6	0.282241572	2822.415723
SDF: Urban-Related Areas (D) -> Institutional Settlements / Areas (D.f)	20	16.72026939	167202.6939
SDF: Urban-Related Areas (D) -> Authority Areas (D.g)	150	0.230657788	2306.577883
SDF: Urban-Related Areas (D) -> Residential Areas (D.h)	10133	2952.552	29525523.93
SDF: Urban-Related Areas (D) -> Future Residential Areas (D.h)	8	34.64465	346446.5
SDF: Urban-Related Areas (D) -> General Business Areas (D.i)	337	0.95786	9578.63
SDF: Urban-Related Areas (D) -> Urban Green Areas (D.n)	3	17.0053777	170053.777
SDF: Urban-Related Areas (D) -> Sports Fields & Infrastructure (D.o)	11	6.131961278	61319.61278
SDF: Urban-Related Areas (D) -> Cemeteries (D.p)	18	3.529771152	35297.71152

