



rural development & land reform

Department:
Rural Development and Land Reform
REPUBLIC OF SOUTH AFRICA

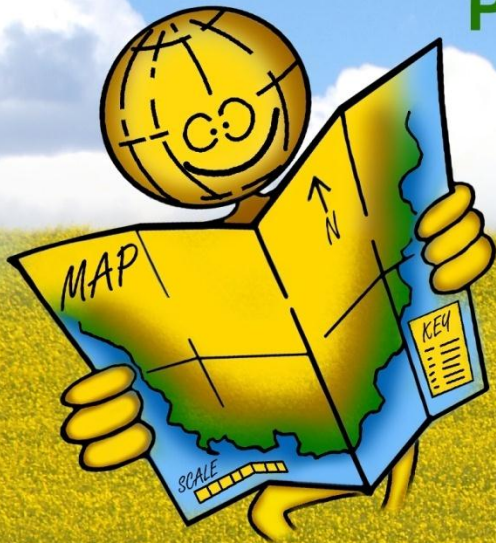


Brian Engel

MapAware

Enhancing Map Use Skills

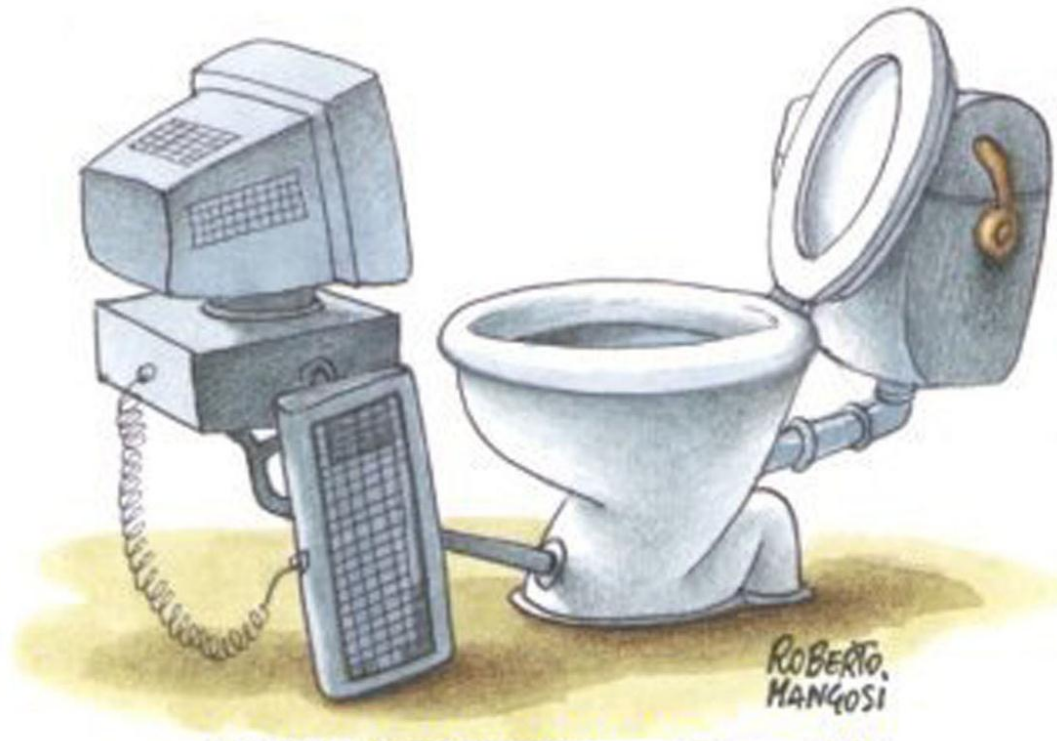
Promoting Geo-Spatial Awareness



So little time.....

.....so much to deliver

up-skilling on the job



GIS and Basic Map Use Skills



Map Use Skills



Map Use Skills
Map Use Skills
Map Use Skills
Map Use Skills

Map Use Skills

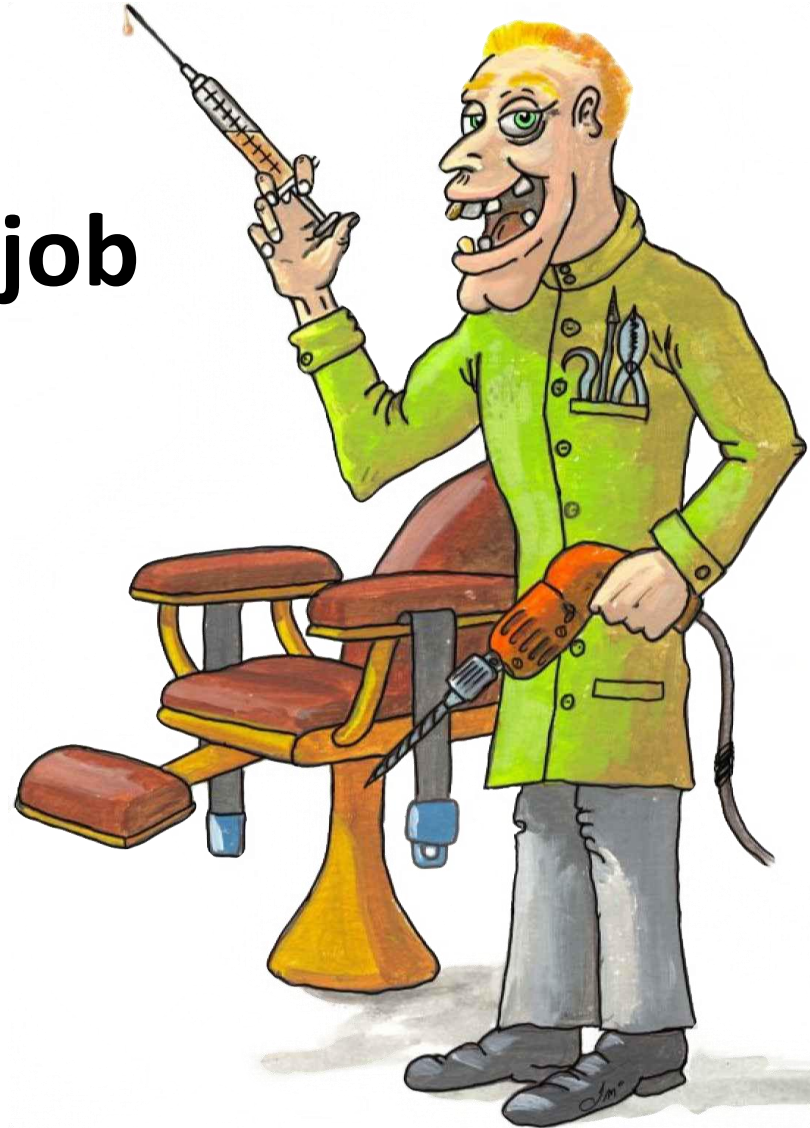
Map Use Skills

Map Use Skills

Map Use Skills

Map Use Skills

**The right tools...
for the job**



Bridging the gap



Imagery





1490

1495

1500

1505

1510

1515

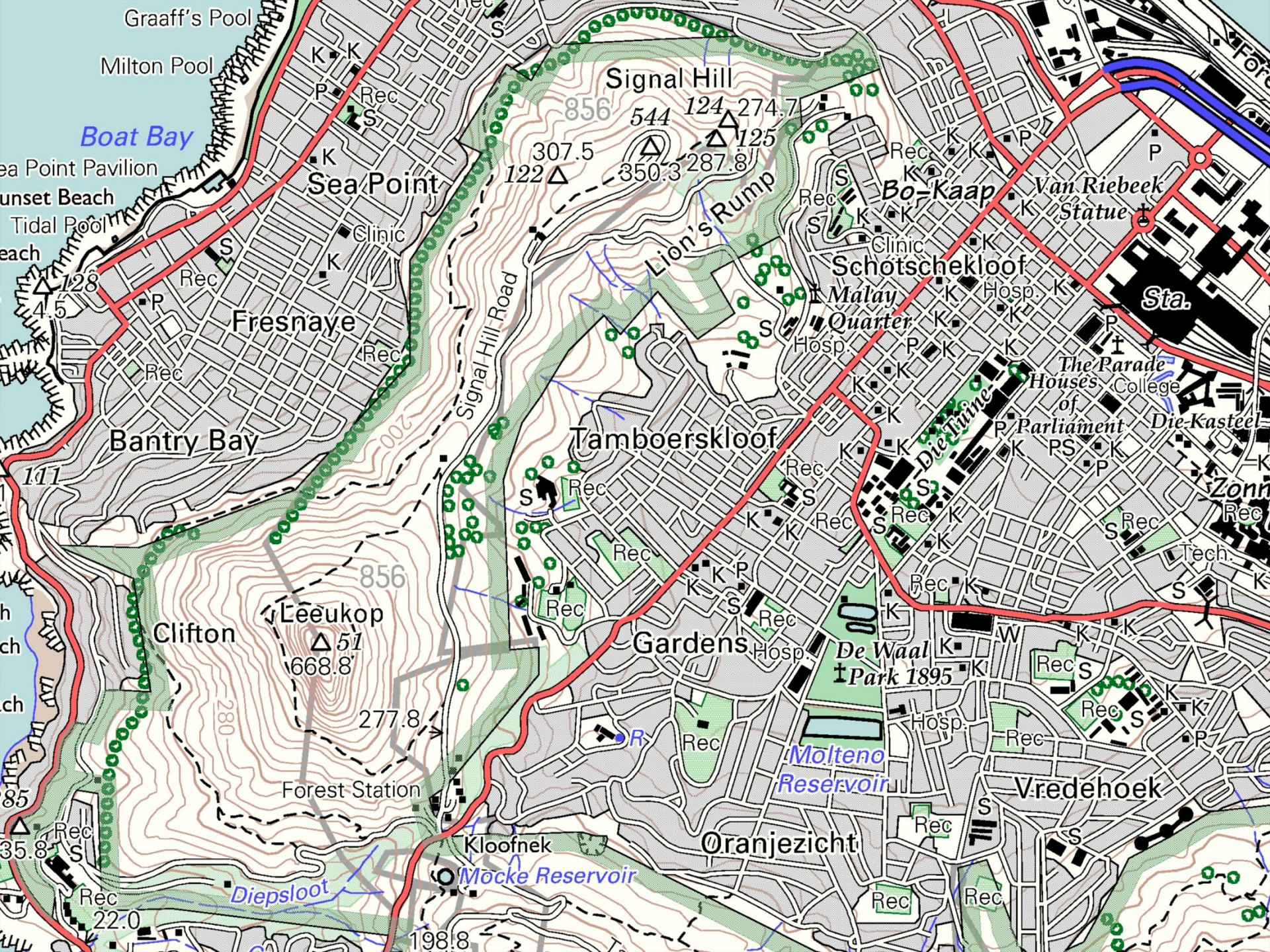
1520

1525

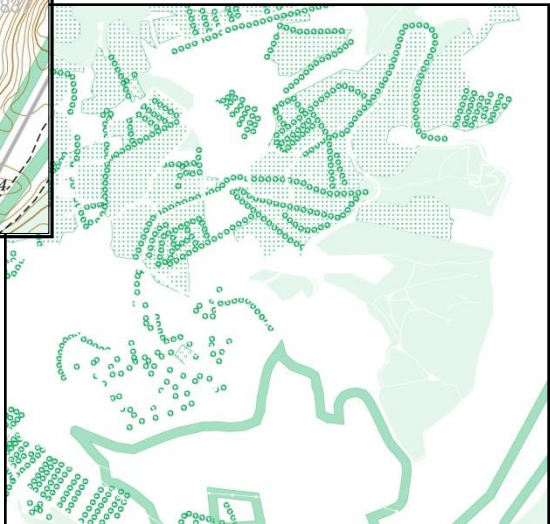
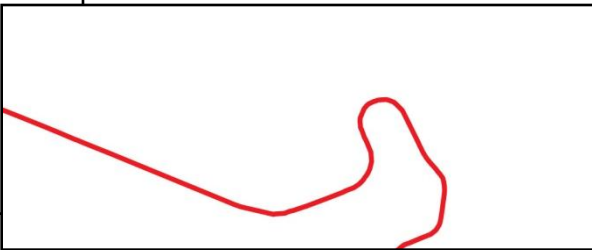
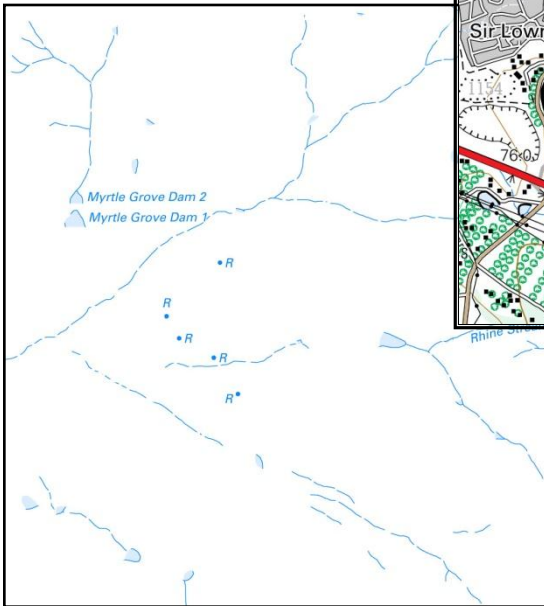
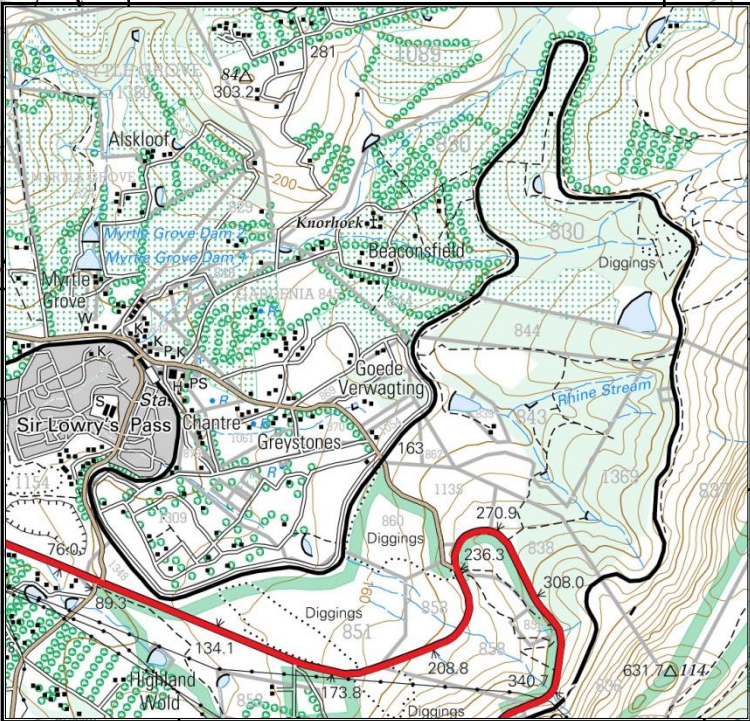
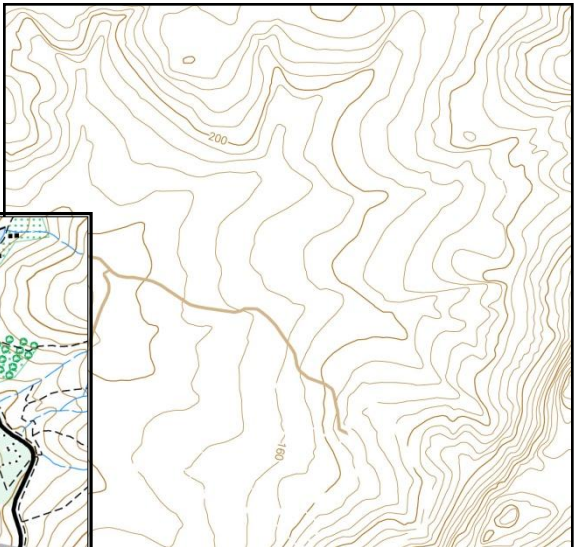
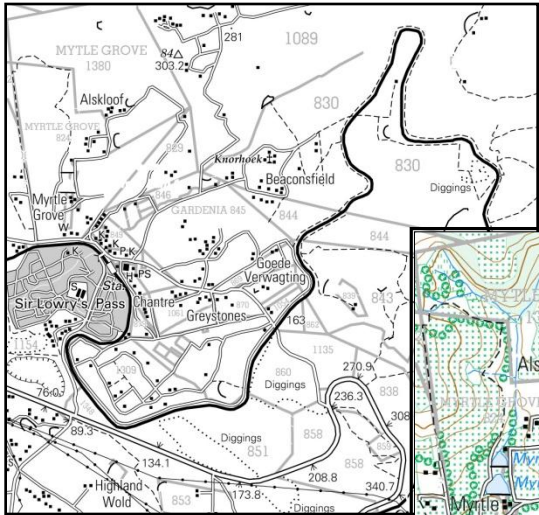
1530

1535

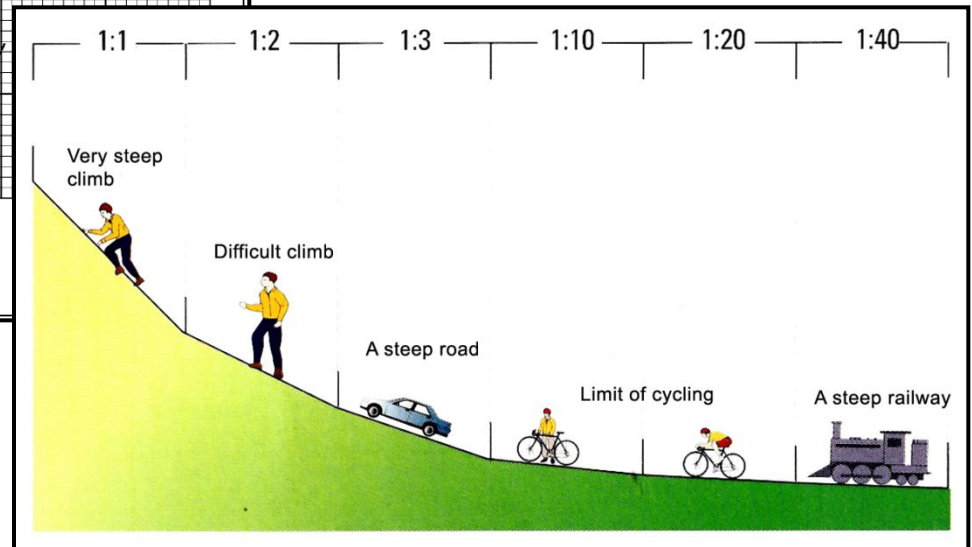
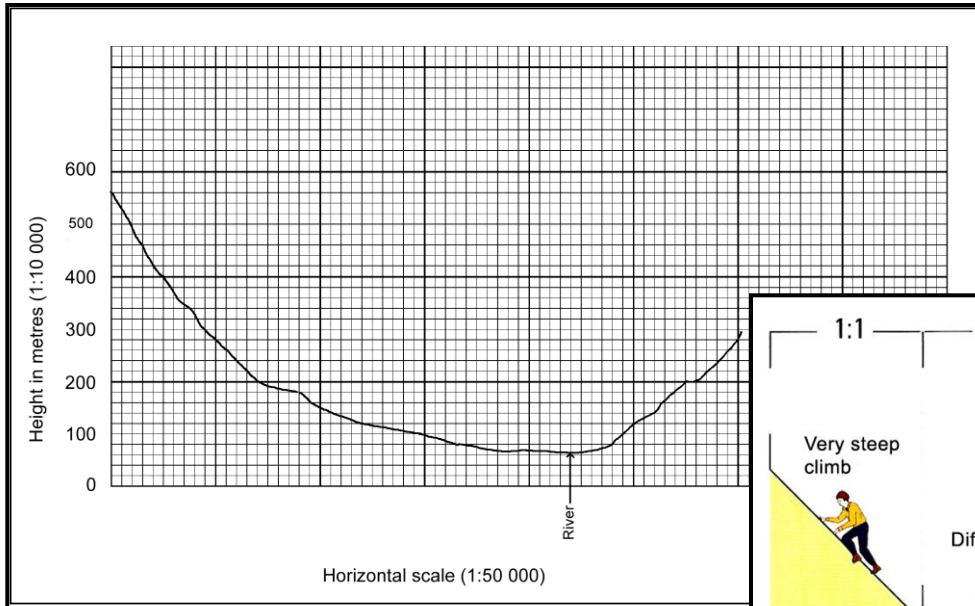
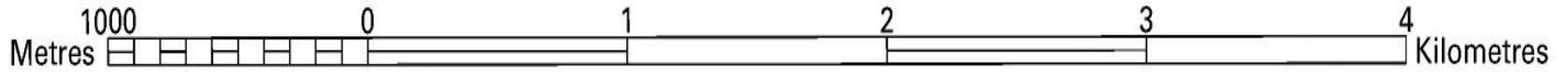
1540



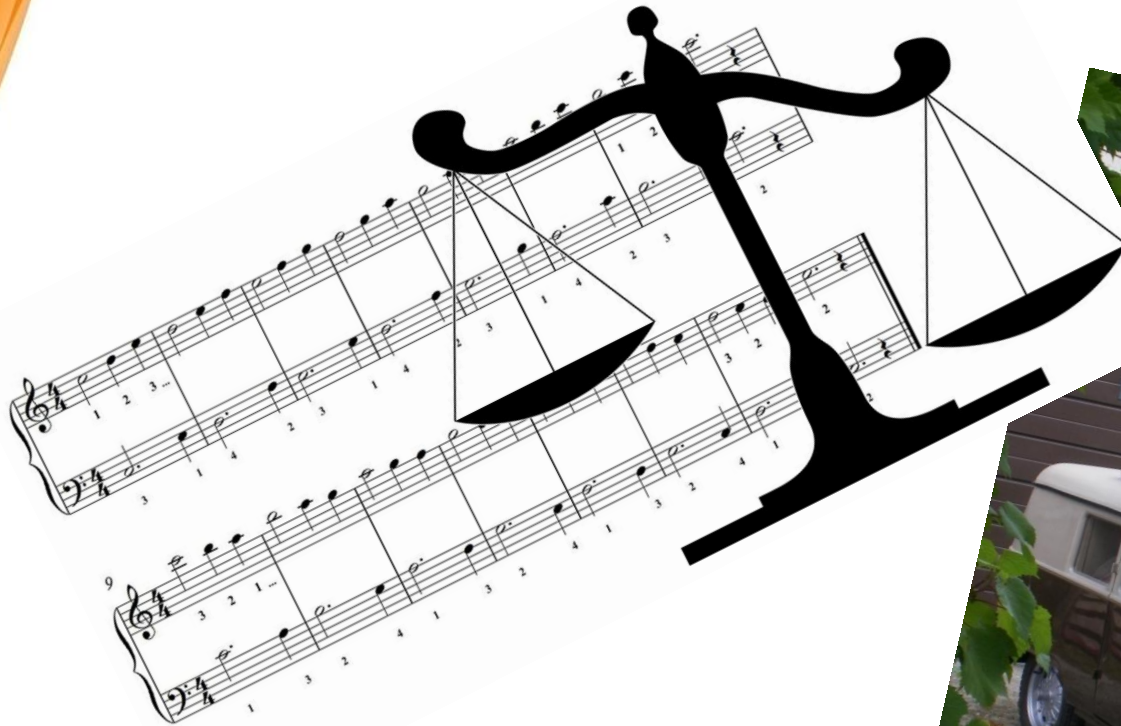




Geographical Techniques



User-friendly applications



A close-up photograph of a green tree frog with white horizontal stripes on its back, hanging upside down from a thin branch. The frog's head is at the bottom, and its body extends upwards. The background is dark and out of focus, showing some green leaves and branches.

Location

Location

Location

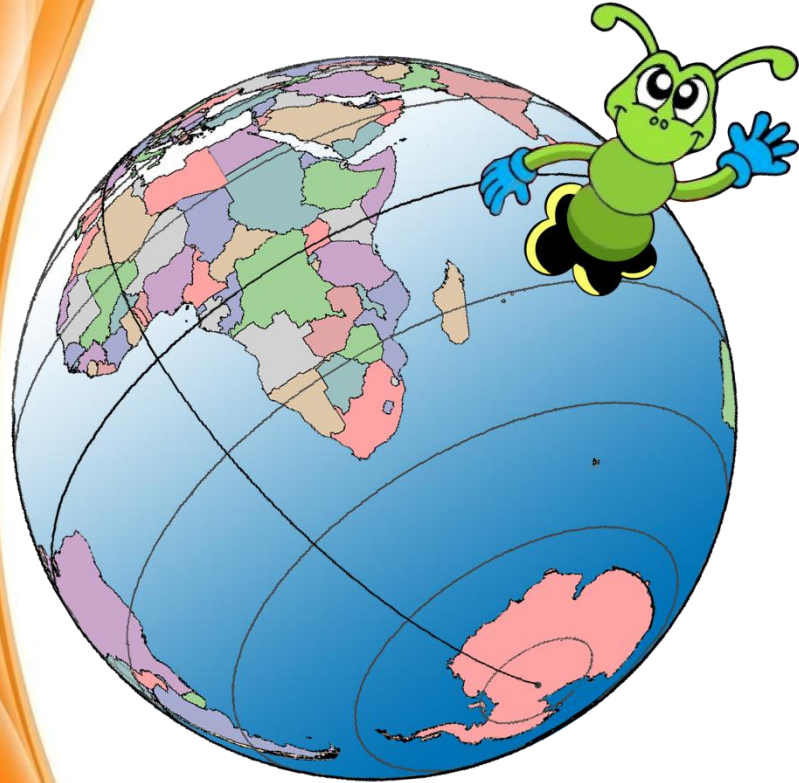
Photograph by Tim Laman

Where am I?

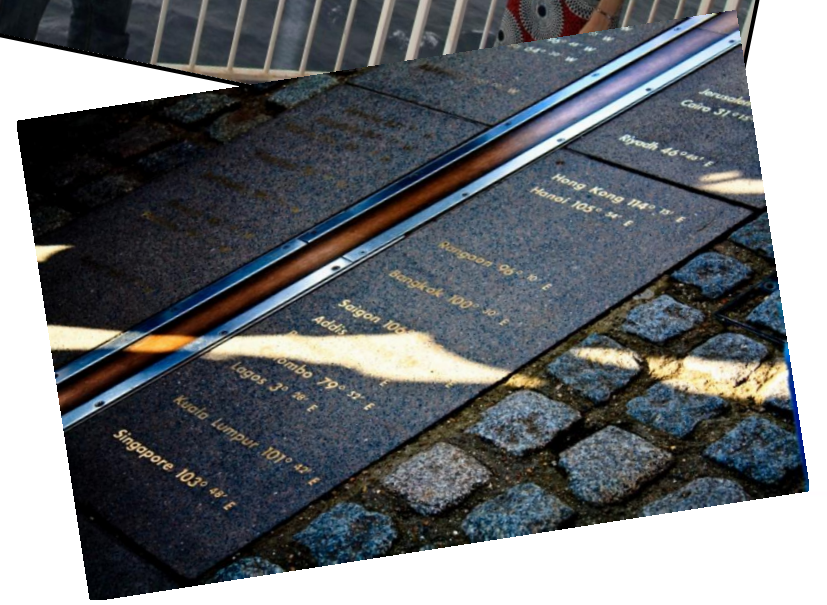
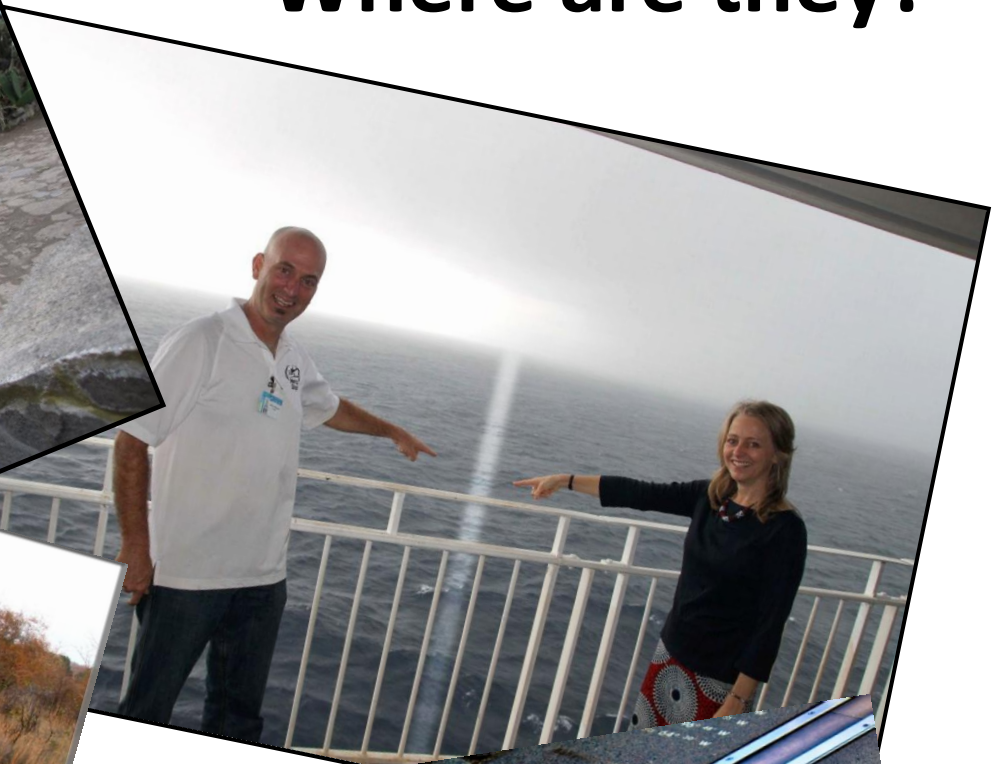
 **NATIONAL
GEOGRAPHIC**

© 2008 National Geographic Society. All rights reserved.

Geographical Co-ordinates



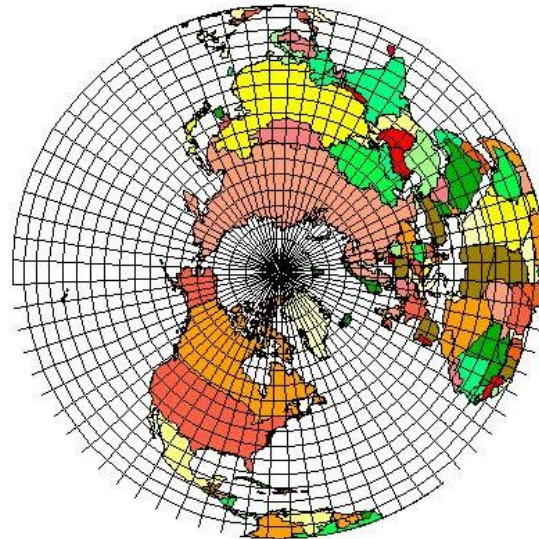
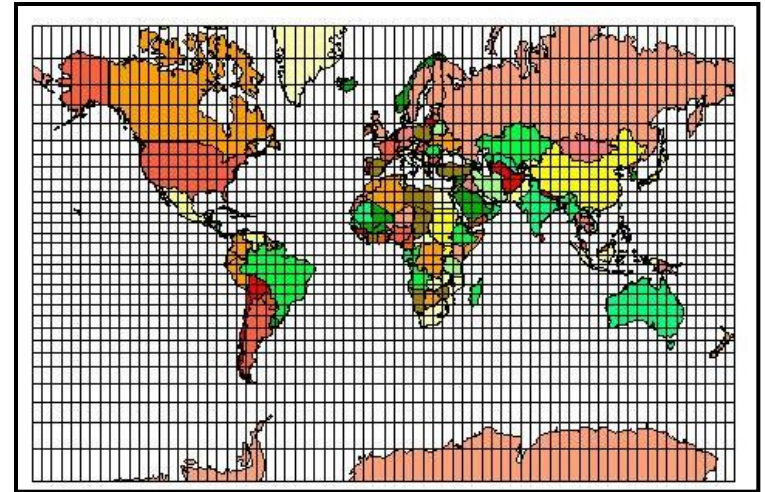
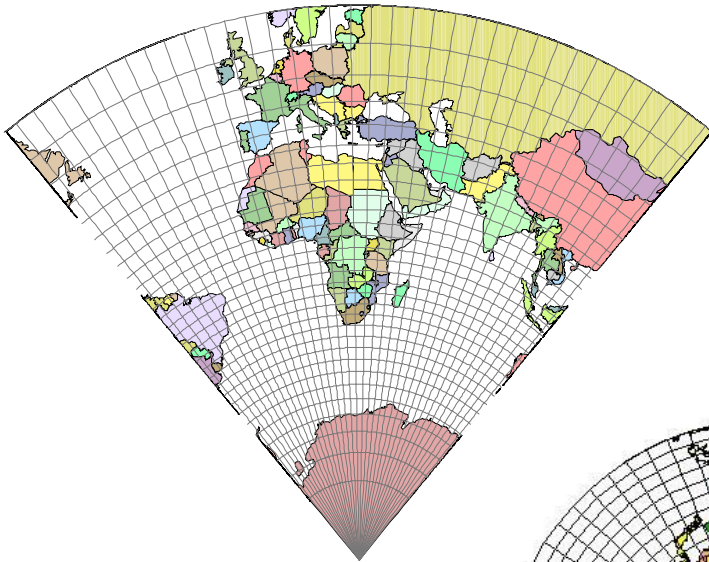
Where are they?



Plotting Geographical Co-ordinates



Projections

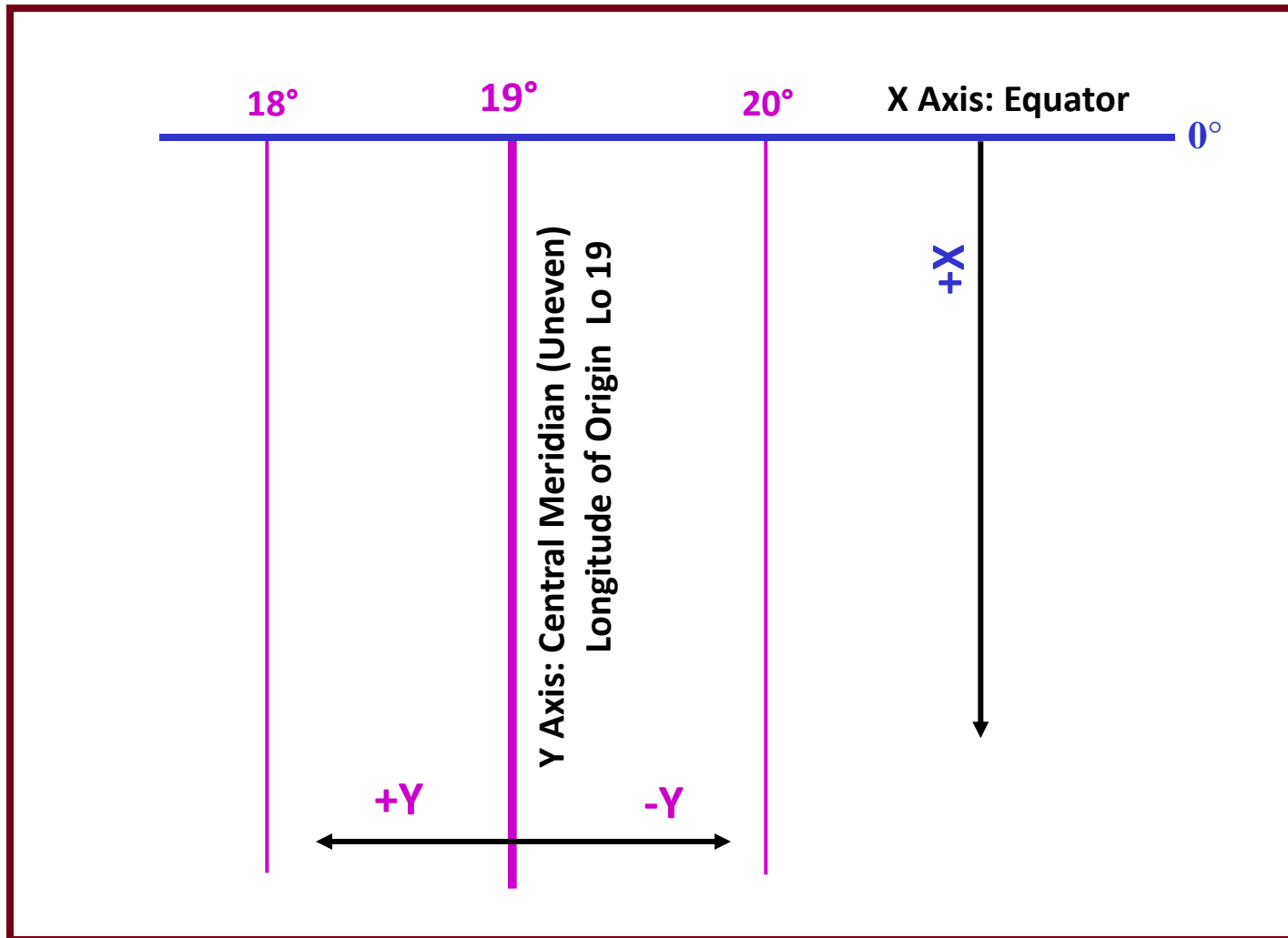


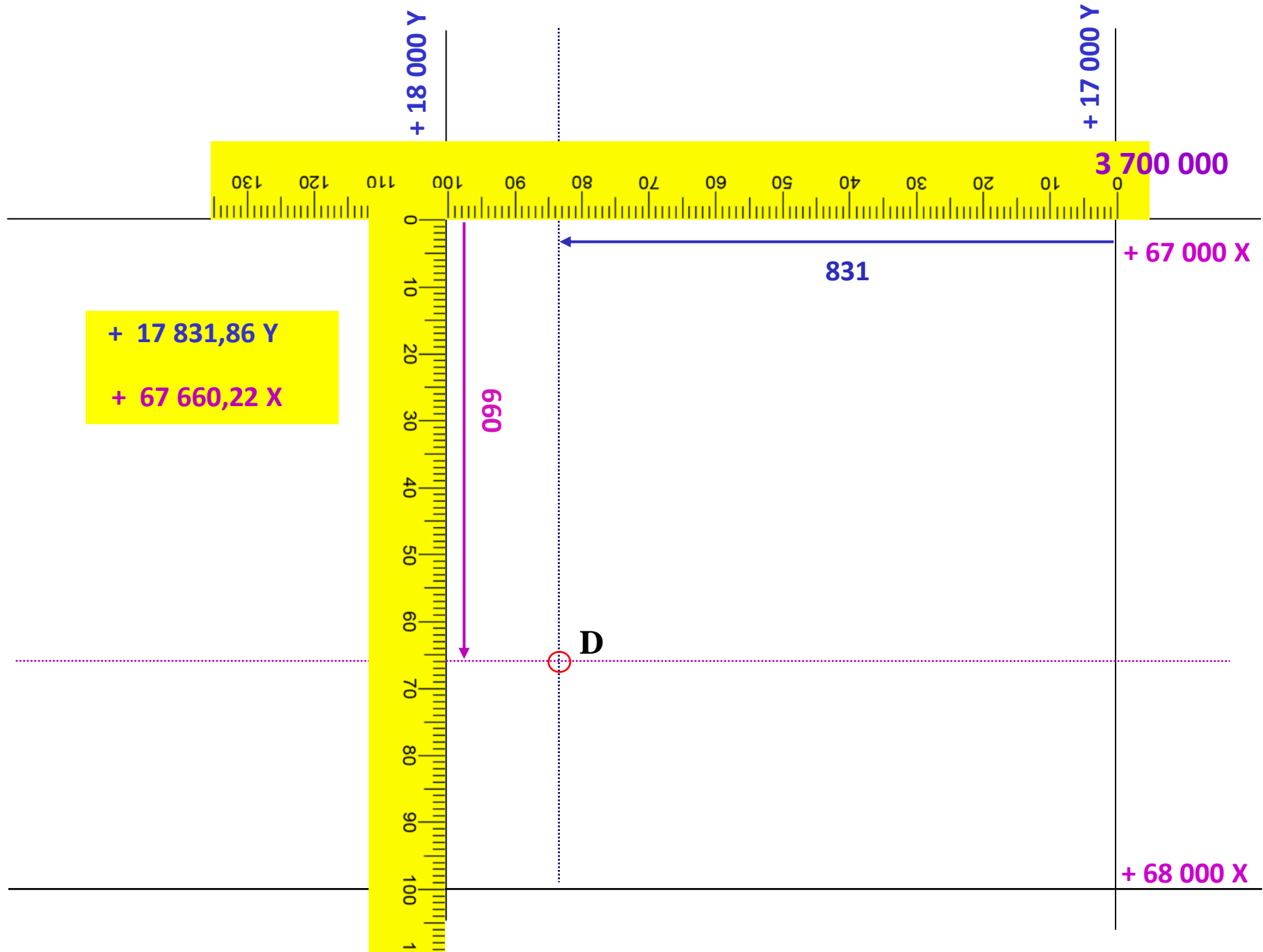
Understanding Cadastre





The South African Co-ordinate System





GPS Practical



+50000

+49500



+3758500

+3759000

Hands-on



just a little pain.....



A step in the right direction....

hopefully



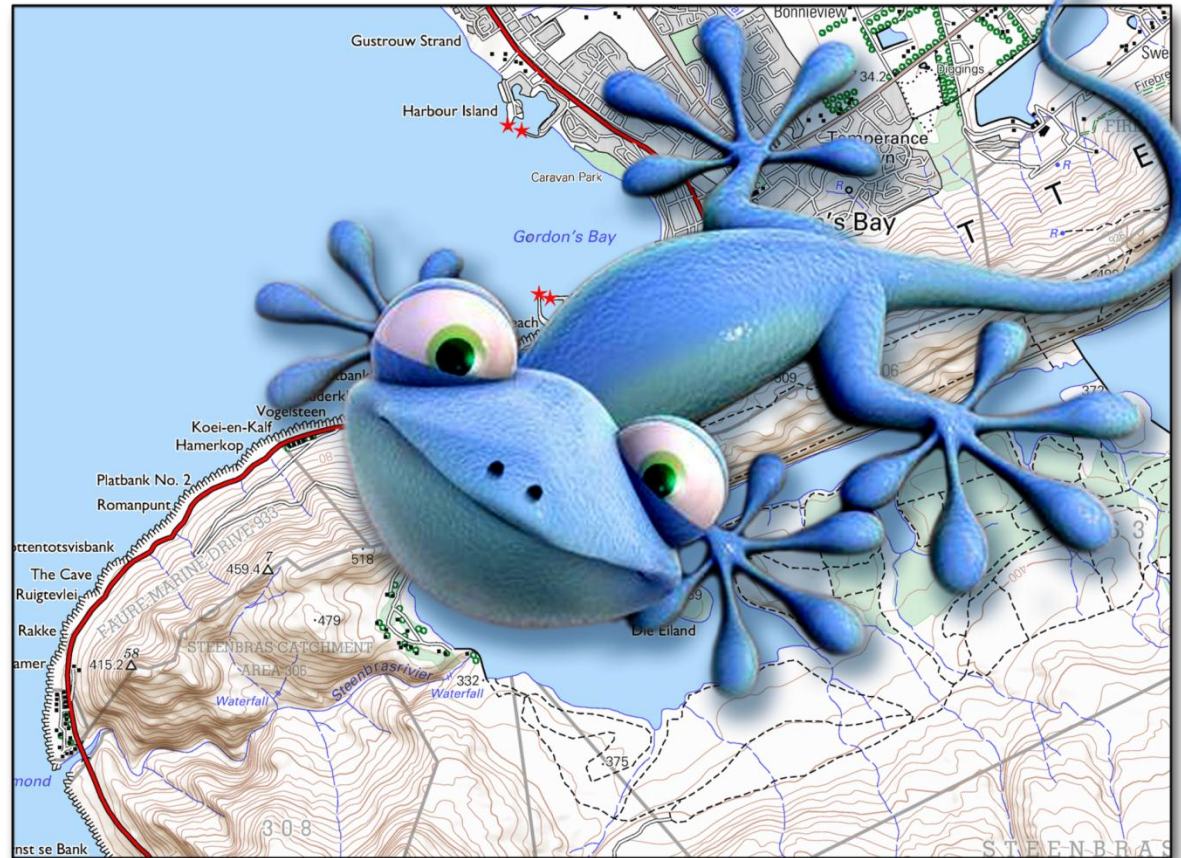
Geo-spatial Information for Development



Any questions or comments.....



Thank you



bengel@ruraldevelopment.gov.za

021 658 4341

082 939 6060