



Find a wide range of products for home, work and play in this catalogue - all made with recycled material.

*You're not recycling until you're buying recycled!*



Making products from recycled material diverts waste from land fills and returns them into the manufacturing system. "Closing the loop" this way saves on materials and energy for mining, processing and transport, which in turn reduces carbon and methane greenhouse gas emissions and climate change impacts. Recycling creates added employment and small business opportunities.



Produced by the Provincial Department of Environmental Affairs and Development Planning as part of the 2Wise2Waste programme - one of the Province's eco-efficiency initiatives.



2Wise2Waste



Printed on recycled paper.



A buyer's guide to products made with recycled materials.

# RECYCLED PRODUCTS CATALOGUE & CONTACT INDEX

Western Cape - 2010

Provincial Department of Environmental Affairs  
and Development Planning

HOMEWARE & GIFTS

GARDEN & OUTDOOR

INDUSTRIAL

CLOTHING & ACCESSORIES

BUILDING & CONSTRUCTION

OFFICE PRODUCTS

CONTACTS



# Foreword from the Department

The “Buy Recycled” marketing campaign forms an integral part of the Department of Environmental Affairs and Development Planning’s strategy to stimulate the Recycling Economy in the Western Cape. Buying products made from recycled material reduces one’s ecological footprint but also diverts the amount of waste from entering our over-stretched landfill sites. The diversion of waste and the reintroduction of this material into our economy contribute to our economic growth with lesser environmental pressure. The use of recycled material as input material into the production of products, in place of or complementing virgin material supports the recovery of recyclables. The demand for recyclables in particular by the manufacturing sector contributes to sustain and potentially grow the jobs in the waste recovery and conversion sector in the Western Cape. This campaign demonstrates our commitment to mainstream sustainability and to optimise resource-use efficiency as one of the avenues to creating an open opportunity society for all in the Western Cape.

The catalogue demonstrates that discarded material can have tremendous value if it is carefully collected and transformed or upgraded with quality in mind. It also makes it easier to find and buy products that will do the least harm when they are produced.

The 2010 catalogue is the third edition since its inception in 2008 when the “buy recycled” campaign was launched. This campaign has in particular provided a marketing platform for SMMEs that have incorporated recycle into their products alongside larger companies that have demonstrated their environmental responsibility. We will therefore continue to explore ways to stimulate recycling that benefits our citizens and the environment. An increase in the number of products exhibited in this catalogue and the positive responses from the public bears further testimony that this economy is vibrant and has a huge growth potential.

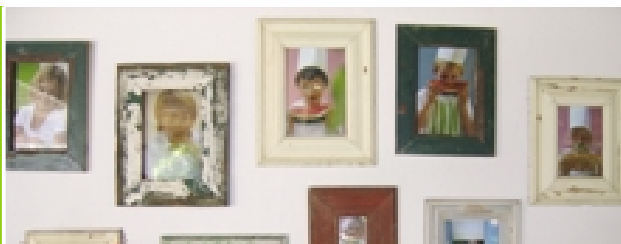
I therefore urge society at large to support this campaign and contribute towards the much needed economic recovery that is in line with the triple bottom line. This will undoubtedly benefit citizens and businesses in the province.

Anton Bredell

Minister: Local Government

Environmental Affairs and Development Planning

Provincial Government of the Western Cape



# Welcome!

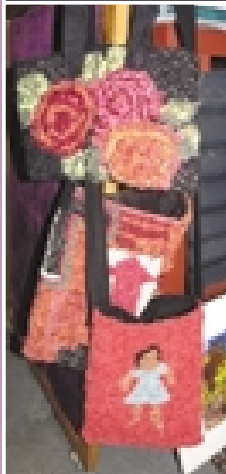
This is the third edition of a Recycled Product Catalogue for the Western Cape and, we believe, South Africa

In it you will find a range of items for homeware, garden, outdoor, clothing and accessories - made of waste materials recovered in the Western Cape and recycled into new unique products.

The product selection process included advertisements in the regional press calling for product listing, research with recycling companies and referrals from contacts and stakeholders in the industry.

Buying recycled saves on new materials and energy required for mining, processing and transport – which in turn reduces carbon and methane greenhouse gas emissions and climate impacts.

Use this catalogue as a handy guide to closing the loop as part of your contribution to the community and environment.



**2Wise2Waste**

## FURTHER ENQUIRIES:

Belinda Langenhoven

Tel: 021 483 2971 Fax: 021 483 2979

[blangenh@pgwc.gov.za](mailto:blangenh@pgwc.gov.za)

Private Bag X9086, Cape Town, 8001

3 Dorp Street, Cape Town, 8001

Department of Local Government,  
Environmental Affairs and Development Planning  
Province of the Western Cape



# 2Wise2Waste



One of the Province's eco-efficiency initiatives, the 2Wise2Waste programme focuses on minimising environmental impacts of provincial government departments through initiatives such as minimizing resource use and wastage, improving water and energy efficiencies and green procurement practices.

We need to live more lightly and greener on the earth, because the degradation of our environment is compromising not only our survival, but the survival of most other living beings on the planet. We can no longer ignore the impact we have on the earth's ecosystems.

The time has now arrived to take responsibility for the consequences of our lifestyles. By conserving water and energy, buying natural products, walking or riding a bicycle instead of driving, reducing waste, reusing what you can and recycling wherever possible can make a very huge impact in saving our environment and creating a sustainable lifestyle.



Thanks to all those who generously gave their time in providing leads and contacts to help us compile the information contained herein.



Produced by the:  
Department of Affairs and Development Planning  
Directorate: Waste Management  
Private Bag X9086, Cape Town, 8000

## Disclaimers

1. The Provincial Government cannot endorse companies, individuals, or organisations or their products listed, in this catalogue, which is produced as a public service to stimulate the recycling economy of the Western Cape.

2. While all reasonable effort has been made to ensure accuracy, the Provincial Government of the Western Cape and their service providers cannot be held liable for errors of fact or omission.

Copyright on all printed material (except product supplied photography) is held by the Provincial Government of the Western Cape.



# CONTENTS

The estimated percentage of recycled material content of products is listed under their contact details. This information is supplied by the producers.

Benches; Buckets;  
Compost; Curtain Rods;  
Frames; Glassware;  
Hangers; Lights & Lamps;  
Refuse Bags; Worm Bins.



02

HOMEWARE & GIFTS

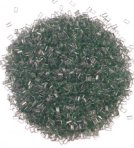
Benches; Decks;  
Jungle Gyms; Tables.



13

GARDEN & OUTDOOR

HIPS & PP; Plastic Pellets;  
Plastic Sheeting; Recycled  
Solvents; Rubber Crumb;  
Solid Polystyrene Chip.



17

INDUSTRIAL

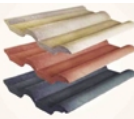
Accessories & Gift Boxes;  
Badges & Broaches;  
Bags; Jewellery;  
Refurbished Hangers.



20

CLOTHING & ACCESSORIES

Bricks; DPM; Expanded  
Polystyrene Blocks &  
Sheets; Isotherm;  
Roof Tiles; Sub-base.



23

BUILDING & CONSTRUCTION

Stationary &  
Document Holders;  
Office Paper.



26

OFFICE PRODUCTS



29

CONTACTS

## GLASSWARE

Glasses and vases which are handcrafted from discarded bottles

### The Carpenter's Shop

Contact: Delene Roberts

Tel: 021 461 5508 Fax: 021 461 8766

Physical Address: 14A Roeland Street,  
Cape Town, 8000

P.O. Box 3766, Cape Town, 8001

E-mail: [info@tcs.org.za](mailto:info@tcs.org.za)

Website: [www.tcs.org.za](http://www.tcs.org.za)



Recycled content (estimated): 100%

## RECYCLED GIFTS AND HOMEWARE

Frames and clocks made from recycled cooldrink cans, re-used cd's and Lp records

### Metamorphosis

Contact: Steve & Theresa Norton

Tel: 044 382 5889

Physical Address: Metamorphosis (Shop),  
12 Main Road, Cnr Long Street, Knysna

E-mail: [metamorphosis@cyberperk.co.za](mailto:metamorphosis@cyberperk.co.za)

Website: [www.metamorphosisknysna.co.za](http://www.metamorphosisknysna.co.za)



Recycled content (estimated): 75%

## PLASTIC GARMENTS HANGERS, REGRIND STYRENE, REGRIND

Refurbished garment hangers for clothing manufacturers

### Hangerman (Pty) Ltd

Contact: Wardah Gafielden

Tel: 021 701 1595 Fax: 021 701 5053

Physical Address: 21 Steenberg, Cape  
Town, 7947

E-mail: [wardah@hangerman.co.za](mailto:wardah@hangerman.co.za)

Website: [www.hangerman.co.za](http://www.hangerman.co.za)



Recycled content (estimated): 100%

## PLASTIC ANIMALS, TIN FLOWERS AND ANIMALS, TIN CARS, BOTTLETOP CANDLESTICKS

Wide range of handmade craft products made from collected and recycled materials such as tin, wire, plastics, paper, bottle tops and steel.

### Umlungu African Art Dealers

Contact: Robert Vogel

Tel: 021 447 6617 Fax: 086 5012034

Physical Address: 4 Bowden Road,  
Observatory, 7925

E-mail: zulurob@iafrica.com

Recycled content (estimated): 90-100%



## LAMPS, CD's AND BOOK RACKS, CLOCKS

Lamps, Cd racks, book racks made from invasive alien woods mainly from Port Jackson.

### Alien Woods Arts and Crafts

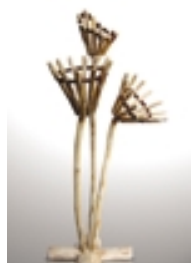
Contact: Samuel Richards / Melissa Richards

Tel: 021 715 6535 Cell: 083 8672816

Physical Address: 15 Ninth Avenue Retreat,  
7945

E-mail: samueljrichards@googlemail.com

Recycled content (estimated): 90-100%



## RANGE OF ECO LIGHTS AND RECYCLED GLASS TUMBLERS

Eco lights and recycled glass tumblers

### Eco Design Architects and Consultants

Contact: Andy Horn

Tel: 021 462 1614

Fax: 021 461 3198

Physical Address: 6th Floor, 79 Roeland  
Street, Cape Town 8001

E-mail: andy@ecodesignarchitects.co.za

: info@ecodesignarchitects.co.za

Recycled content (estimated): 50-100%





## RECYCLED LEATHER AND RUBBER PRODUCTS –PROMOTIONAL ITEMS

Keyrings, sandals, magazine holders, promotional items and many more

### Woodheads

Contact: Richard Harris

Tel: 021 461 7185

Physical Address: 29 Caledon Street,  
Cape Town 8000

E-mail: info@woodheads.co.za

Website: www.woodheads.co.za

Recycled content (estimated): 80% - 100% of leather or rubber



## RECYCLED RECORD CLOCKS

Recycled record clocks – decorated old vinyls and sealed with varnish

### WOW –World of Wonder

Contact: Brue & Jean Goodall

Tel: 021 447 3814

C4 Oude Molen Village, Alexandra Rd,  
Pinelands, 7405

E-mail: wow1@absamail.co.za

Website: www.worldofwonder.co.za

Recycled content (estimated): 50%



## NOTES

## JAMBEES

Pencils made from papermache and other recyclable objects using bottles, newspaper, yoghurt cups and found natural objects such as jacaranda and bluegum.

### Papermache Creations

Contact: Jenee Rosse  
 Cell: 076 910 7148 Tel: 021 790 5874  
 Physical Address: 6 Peterhof Road,  
 Meadows, Houtbay, 7860  
 E-mail: jeneerosse@telkomsa.net

Recycled content (estimated): 90%  
 other 10% is wall paper paste and paint



## SD TOWNSHIP ART AND CRAFT

3D pictures of informal settlements using materials such as board, wood, coldrink cans and craft paints.

### Sithembele Art & Craft

Contact: Sithembele Mgadi  
 Cell: 073 200 8990  
 Physical Address: 57170 Nkululeka  
 Street, Harare, Khayelitsha, 7784  
 E-mail: sithembele.mgadi@gmail.com

Recycled content (estimated): 50%



## UNIQUE ARTWORKS

These products are made from recycled bark, paper, and wooden crates material. A consulting service for home and office interiors and gardens are also provided.

### Zamani-Art and Design

Contact: Bradley Bailey or Richard  
 Cell: 083 6959495  
 E-mail: bradley@zamani-art.co.za/  
 zamani-art@hotmail.com  
 Website: www.zamani-art.co.za  
 Physical address: 24 Denver Road  
 Rondebosch East, Cape Town, 7780

Recycled content (estimated): 60-100%



## OLD WOODEN PHOTO FRAMES, CROSSES, BLACKBOARDS AND MIRRORS

Old wood is used to create items such as photo frames, blackboards within a frame for jotting down a shopping list & wooden brackets for keys and clothes.

### VZ Frames

Contact: Piet van Zyl & De Wet le Roux

Tel: 021 883 3597

Physical Address: Parrot Heights,  
Unit 4, Hulett Street, Stellenbosch, 7600

E-mail: piet@senorchef.co.za

Recycled content (estimated): 85% - 90%



## TOYS (MUSICAL INSTRUMENTS), MOBILE FISH, EDUCATIONAL TOYS ETC...

All products made from 2L plastic bottles, this company also performs workshops at various schools.

### My Daddy

Contact: Robert Rudolph

Cell: 082 399 3598

Physical Address: 65 Lily Street,  
Bellville South 7530

E-mail: mydaddy@bellville-south.co.za

Recycled content (estimated): 100%



## COBOX

Gift boxes made from recycled coca-cola bottles and paper serviettes.

### The Way Home

Contact: Joy Way

Tel: 022 713 3134

Physical Address: 1 Ibis Street,  
Vredenburg, 7380

E-mail: thejoyous@telkomsa.net

Recycled content (estimated): 90% recycled

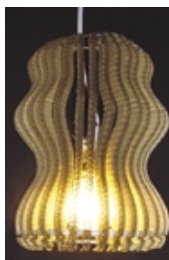


## POLYETHYLENE SHEETING FOR BUILDING, PACKAGING AND AGRICULTURE

Corrugated Cardboard Lampshade and Wire and bead lampshade.

### Beehyv Arts

Contact: Sandile B Kula  
 Cell: 082 926 1221  
 Fax: 021 556 3856  
 Physical Address: 39 Ntutyana Street, Litha Park



## RECYCLED METAL RIM AND STAINED GLASS LIGHTS, SCRAP METAL AND GLASS WALL DECORATIONS

### Danelle Hugo Designs

Contact: Danelle Hugo-van Eeden  
 Tel: 023 340 4551  
 Physical Address: Rivierplaas, Worcester  
 Website: [www.danellehugodesigns.co.za](http://www.danellehugodesigns.co.za)  
 E-mail: [info@danellehugodesigns.co.za](mailto:info@danellehugodesigns.co.za)

Recycled content (estimated): 50-95% recycled



## HEARTCOASTERS, TEA-BAG STANDS, MARINE MIRROR

An extensive range of unique products, all decorated with hand painted recycled T-bags. Greeting cards, coasters and handbags.

### Original T-Bag Design

Contact: Jill Heyes  
 Tel: 021 790 0887  
 Fax: 086 5423213  
 Physical Address: Units 3&4 Kronendal Business Park, Main Road, Hout Bay  
 Website: [www.originaltbagdesigns.co.za](http://www.originaltbagdesigns.co.za)  
 E-mail: [info@tbagdesigns.co.za](mailto:info@tbagdesigns.co.za)

Recycled content (estimated): ±98%



## WOODEN SLABS, TABLE TOPS, VASES, PLATES AND STOOLS

These products are made from wood pellets and designed to form beautiful décor for offices and home furniture.

### Twak Wood

Contact: Bianca Black

Cell: 079 5030151 Fax: 086 6330580

Physical Address: 19 Frank Townsend Road, Whiteriver

Website: [www.twakwood.co.za](http://www.twakwood.co.za)

E-mail: [biancablack@vodamail.co.za](mailto:biancablack@vodamail.co.za)

Recycled content (estimated): 100% recycled



## HANDWOVEN CARPETS

Beautiful hand woven rugs using waste salvaged from fabric manufactured.

### Barrydale Weavers

Contact: Carol Morris

Cell: 082 5093447 Fax: 028 5721488

Physical Address: Laing Street, Barrydale, Western Cape

Website: [www.barrydaleweavers.co.za](http://www.barrydaleweavers.co.za)

E-mail: [carol@mud.co.za](mailto:carol@mud.co.za)

Recycled content (estimated): 95% recycled



## RECYCLED ANIMALS, BROCHURES, KEY RINGS AND PAPER GIFT BOXES ALL MADE FROM RECYCLED MATERIAL

A variety of products made from recycled material.

### Kunye (Home Power T A Kunye)

Contact: Pam Xapa

Tel: 021 685 7720 Fax: 021 685 1537

Physical Address: Crawford House, Cnr Alber & Highway Roads, Mowbray, Cape Town

Website: [www.kunye.org](http://www.kunye.org)

E-mail: [info@kunye.org](mailto:info@kunye.org)

Recycled content (estimated): 100% recycled



## “STRAPPED”, AN ENVIRO-FRIENDLY LIGHTING RANGE WITH A DIFFERENCE

These lights are made by hand with packaging straps and wire mesh. CFC light fitting is used in the range which include wall sconces and pendants.

### Felix Holm

Contact: Felix Holm

Cell: 082 9238293 Fax: 021 557 5456

Physical Address: Montebello Design

Centre Shop 31, Newlands Avenue,  
Newlands, Cape Town

Website: [www.mooi.co.za](http://www.mooi.co.za) E-mail: [strapped@mooi.co.za](mailto:strapped@mooi.co.za)

Recycled content (estimated): 10-75% recycled



## LIGHT: GREEN LIGHTS

Colourful flower ball, milk handle form ball all made from recycled plastic.

### Heath Nash

Contact: Colleen Williams

Tel: 021 447 5757 Fax: 086 5252663

Physical Address: 2 Mountain Road

Woodstock, 7925, Cape Town

Website: [www.heathnash.com](http://www.heathnash.com)

E-mail: [hadmin@mweb.co.za](mailto:hadmin@mweb.co.za)

Recycled content (estimated): 98% recycled



## FASHIONABLE RECYCLED BAGS

Transforming discarded vinyl billboards into well designed products for resale. The service offers designing you custom made or corporate products such as grocery, laptops sleeves or wallets.

### Nicola Grayson

Contact: Nicola Grayson

Tel: 021 5535619 Fax: 086 5221261

Physical Address: 2 Starboard Way,

Atlantic Beach Golf Estate Melkbos, 7441

Website: [www.nicolagrayson.co.za](http://www.nicolagrayson.co.za)

E-mail: [fashion@nicolagrayson.co.za](mailto:fashion@nicolagrayson.co.za)

Recycled content (estimated): 95% recycled



## PLASTIC BAGS, BLACK REFUSE & CLEAR BAGS

Clear and black bags available in various sizes and made from 100% recycled plastic.

### Pref-Pak Plastics

Contact: Haydon Wood  
Tel: 021 982 7093  
Email: mwkaren2@mweb.co.za  
Physical Address: Unit 2,  
25 Tarentaal Crescent, Okavango



## PLASTICS AND REFUSE BAGS

Black bags made from recycled plastic in various sizes.

### Tuffy-Brands

Contact: Rory Murray  
Tel: 021 385 1626  
E-mail: Rmurray@tuffy.co.za  
Website: www.tuffy.co.za  
Physical address: 3 Gulfstream Avenue,  
Airport City



Recycled content (estimated): 70%

## BIODEGRADABLE FOOD PACKAGING

### Green Home Products Pty Ltd

Contact: Catherine Morris  
Tel: 021 762 6033 Fax: 021 762 0885  
E-mail: info@greenhome.co.za  
Website: www.greenhome.co.za  
Physical address: Unit 24, Plantation  
Centre, Plantation Road, Ottery, 7780

Recycled content (estimated): 100%



## ARTWORK MADE FROM RECYCLED MATERIAL

We specialize in the recycling of tins; e.g. animals lampshades, world globes.

### Mixed Ideaz Art and Craft CC

Contact: Godfrey & Andrew Dombuleni

Cell: 083 562 2224

Physical Address: 82 Coleridge Rd,  
Salt River, Cape Town

E-mail: [mixedideaz@webmail.co.za](mailto:mixedideaz@webmail.co.za)

Website: [www.flickr.com/photos/mixedideaz](http://www.flickr.com/photos/mixedideaz)

Recycled content (estimated): 80%



## STREETWISE

Bottletop and Wire Soccerball.

### Gift Warehouse

Contact: Nikki Scott

Tel: 021 460 8374

E-mail: [scott@cput.ac.za](mailto:scott@cput.ac.za)

Physical address: 75 Harrington Street,  
3rd Floor, Cape Town

Recycled content (estimated): 85%



## NOTES



## MILK BOTTLE LIGHTS, BOTTLETOP PRODUCTS, CAN CARS AND ANIMALS, PLASTIC BAG CREATURES, RECYCLED GLASS MOSAIC AND LP CLOCKS

### Little Shoppe & studio.

Contact: Alda du Plooy

Tel: 073 2317445

Physical Address: 3 Warrington Place, Harbour Road, Hermanus

Website: [www.facebook.com:littleshoppe](http://www.facebook.com:littleshoppe)

E-mail: [thelittleshoppe@whalemail.co.za](mailto:thelittleshoppe@whalemail.co.za)

Recycled content (estimated): 40-100% recycled



## WOODEN TOYS

Toys made from recycled wood.

### Wooden Toys

Contact: Wilna Bekker

Tel: 021 904 5077 Fax: 021 902 1209

Physical Address: 7 Luarimerway Penhill, 7100

E-mail: [wbekker48@gmail.com](mailto:wbekker48@gmail.com)

Recycled content (estimated):

98% recycled



## NOTES

## BENCHES AND TABLES

Recycled pallets to make dog house, tables and benches.

### Vuka Mzantsi Carpentry and Joinery

Contact: Lamech Zingela

Tel: 073 061 5980 or 076 992 8753

Physical Address : 5988 Zwelibanzi,  
Samora Machel, Phillippi

Recycled content (estimated): 100%



## WORM FARMS, WORM CASTINGS, WORM TEA, BOKASHI BINS AND BOKASHI BRAN

Recycled worm farms and by-products.

### EA Distributors

Contact: Emile and Avril

Tel: 021 715 1431

Cell: 082 8230757 (Emile)

Physical Address: 14 Drumblair

Crescent, Tokai, 7945

Website: [www.eadistributors.wordpress.com](http://www.eadistributors.wordpress.com)

E-mail: [eadistributors@telkomsa.net](mailto:eadistributors@telkomsa.net)

Recycled content (estimated): 100% recycled kitchen waste



## BENCHES AND TABLES

Benches, tables, decks, boardwalks, recycled roof sheeting, IBR sheets, corrugated sheets, flat sheets, clip boards paneling and walling made from recycled plastics.

### Timber Plastics

Contact: Moray Stephens

Tel: 021 790 7345 / 084 867 2479

E-mail address: [morays@mweb.co.za](mailto:morays@mweb.co.za)

Website: [www.timberplastics.co.za](http://www.timberplastics.co.za)

Physical Address: 18 Nooitgedacht  
Drive, Houtbay, 7806

Recycled content (estimated): 100%



## WORMS

Worm casting- letting worms eat your wastes, you'll end up with one of the best soil amendments.

### Patrick Beneke Worm Bins

Contact: Patrick Beneke

Tel: 021 981 8570 / 073 967 3185

E-mail:

Patrick.beneke@capetown.gov.za

Physical Address: 109 Northpine drive,  
Brakenfell, 7570

Vermi content (estimate): 100%



## PHOTO FRAME

Used Timber is recycled, from used / discarded building materials or from rubbish dumps.

### Wanadoo

Contact: Paul & Dylan Erasmus

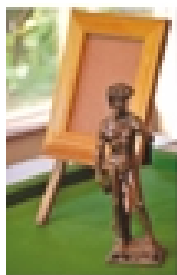
Tel: 082 697 3388 or 044 870 7333

Fax no: 044 870 7333

E-mail: candylan@mweb.co.za

Physical Address: Tarentaal Bos Farm,  
District Blanco, George

Recycled content (estimated): 98%



## CAN CRASHER

Wet waste, green waste and paper waste.

### Full Cycle

Contact: Mary Murphy

Tel: 021 789 2922

E-mail: mail@fullcycle.co.za

Website: www.fullcycle.co.za

Physical address: Worm Farm,  
Noordhoek farm Village, Noordhoek, 7979

Recycled content (estimated): 100%



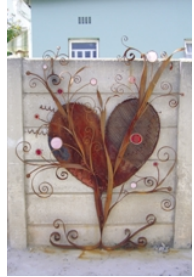
## GARDEN DECOR

Recycled scrap metal and glass wall decorations.

### Danelle Hugo Designs

Contact: Danelle Hugo- van Eeden  
Tel: 023 340 4551 Fax: 023 340 4551  
E-mail: info@danellehugodesigns.co.za  
Website: www.danellehugodesigns.co.za  
Physical Address: Rivierplaas,  
Worcester, 6849

Recycled content (estimated): 95%



## COMPOST, LAWN DRESSING AND TOPSOIL

Composted products aerobically produced. No weeds, no smells, organically certified products by ecocert Afrisco.

### Soil and More Reliance

Contact: Mia van Rooyen  
Cell: 072 609 1414  
Tel: 021 951 3161 Fax: 021 951 3167  
E-mail: Mia@reliance.co.za  
Website: www.reliance.co.za  
Physical Address: Sacks Circle,  
Bellville South, Cape Town

Recycled content (estimated): 100%



## COMPOST TIMBERS, WORM BINS AND IRRIGATION SYSTEM

Products manufactured from recycled car tyres or tubes and other waste saving devices as well as composters.

### Aquatrap

Contact: Mark Algra  
Tel: 021 696 8340  
E-mail: markalgra@yahoo.com  
Physical Address: 16 Sybrant road,  
Sybrant Park

Recycled content (estimated): 80-90%



## WIRE AND TIN RADIO'S, TIN GECKOS, PEN-HOLDERS MADE FROM OLD FOOD CANS

Lucky Fish Pen made from old discharged can.

### Streetwires

Contact: Cathy Ronaasen  
Tel: 021 426 2475 Fax: 021 426 0860  
E-mail: [cathy@streetwires.co.za](mailto:cathy@streetwires.co.za)  
Physical Address: 77 Shortmarket Street,  
Cape Town

Recycled content (estimated): 10-100%



## CAN-O-WORMS, WORM FACTORY, WORM CAFÉ, BOKASHI, COMPOSTMAKERS, WORM HAMMOCK, WASTE PLASCANS, VERMICOMPOST

Wet waste, green waste and paper waste. Training, education and carbon foot printing solutions.

### Full Cycle

Contact: Mary Murphy  
Tel: 021 789 2922 Fax: 086 6188865  
Physical Address: Worm Farm,  
Noordhoek Farm Village, Noordhoek  
Website: [www.fullcycle.co.za](http://www.fullcycle.co.za)  
E-mail: [mail@fullcycle.co.za](mailto:mail@fullcycle.co.za)

Recycled content (estimated): 100% recycled polypropylene



## BIN

All products are maintenance free, made from recycled content and are all recyclable and price competitive.

### The Little Shoppe & studio

Contact: Alda Du Plooy  
Cell: 073 231 7445  
E-mail: [thelittleshoppe@whalemail.co.za](mailto:thelittleshoppe@whalemail.co.za)  
Website: [www.facebook.com:littleshoppe](http://www.facebook.com:littleshoppe)  
Physical Address: 3 Warrington Place, Harbour Road,  
Hermanus, 7200 Recycled content (estimated): 40-100%



## RECYCLED RUBBER, INTERLOCKING FLOORING AND MATS

Interlocking hard wearing floor surface and drainage mats made from thermoplastics rubber compounds. These are suitable for workshops, canteens, bars, bakkie mats, machine shops, wet areas, gyms & crèches.

### Regenerated Waste Products CC (RUBALOY)

Contact: Derek Berold

Tel: 021 951 6418 Fax : 021 951 6424

E-mail: dberold@rubaloy.co.za

Website: www.rubaloy.co.za

Physical Address: Cnr Peter Barlow Road and Sacks Circle, Bellville South, 7053

Recycled content (estimated): 98%



## STYLISTED, ECO FRIENDLY AFRO-CHIC PLANTS CONTAINER

The doodle pots are made from recycled plastic containers, glued together and paper mached.

### Soanesbury wacky doodle pots

Contact: Alison Prest

Tel: 021 689 5266/082 899 1461

Fax: 021 689 5266

E-mail: soanes@mweb.co.za

Website: www.flowerschool.co.za

Physical Address: 3 Bushwood Road, Little Mowbray, 7700

Recycled content (estimates): 100%



## OUTDOOR FURNITURE, CRATES, STORAGE BOXES AND BINS

Outdoor Products made from injected moulded plastics.

### GoldSun Industries (Pty) Ltd

Contact: Xandra Anderson

Tel: 021 577 1115 Fax : 021 577 1755

E-mail: xandra@goldsun.co.za

Website: www.goldsun.co.za

Physical Address: C/O Neil Hare and Johan Heyns street, Atlantis

Recycled content (estimated): 100%



## STEEL AND PVC DRUMS

Make use of old recycled metal drums reconditioned and refurbished to suit clients needs.

### Peninsula Drums

Contact: Chocky Moodley/ Nigel Cottle

Tel: 021 374 1161 Fax : 021 374 7012

E-mail: chockym@iafrica.com

Website: www.peninsuladrums.com

Physical Address: Hilda Close,  
Philippi Industria

Recycled content (estimated): 100%



## STEEL, NYLON FIBRE, CRUMB RUBBER

Make use of old recycled tyres to produce rubber products, steel from scrap tyres as well as nylon products.

### SA Tyre Recyclers (Pty) Ltd

Contact: Ika Van Niekerk

Cell: 072 173 5702 Tel: 021 577 1704

Fax no: 021 577 3964

E-mail: ika@satyrerecyclers.com

Website: www.satyrerecyclers.com

Physical Address: Harry Alexander Close,  
Atlantis

Recycled content (estimated): 100%



## IFCO CRATES

These sturdy, polypropylene plastic crates are made from recycling broken crates into new ones. Used for fruits and vegetables transportation around the world, these are reusable crates and have a unique folding design.

### IFCO Systems

Contact: Jonathan Wither

Tel: 021 976 9450

E-mail: ifco@mweb.co.za

Physical Address: Fresh Produce  
Terminal, D Berth, Table Bay Harbour



## BIODIESEL

1. Biodiesel from used cooking
2. Natural soap from biodiesel by-products
3. Kettles from used cooking oil buckets
4. Biodiesel processors

### **Green Diesel**

Contact: Craig Waterman

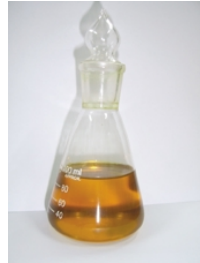
Tel: 021 919 2166 Fax: 021 919 6628

E-mail: [info@green-diesel.co.za](mailto:info@green-diesel.co.za)

Website: [www.green-diesel.co.za](http://www.green-diesel.co.za)

Physical Address: 11A Traka Street,  
Kaymor, Stikland, Bellville

Recycled content (estimated): 40-80%



INDUSTRIAL

Fibre grade RPET suitable for geo textiles, polyester fibre garments strapping, etc.

### **Extrupet (PTY) Ltd**

Contact: Suresh Menon

Tel: 011 865 8360 Fax: 011 865 4254

E-mail: [suresh@extrupet.com](mailto:suresh@extrupet.com)

Website: [www.extrupet.com](http://www.extrupet.com)

Physical Address: 100 Dekema Road,  
Wadeville, 1422

Recycled content (estimated): 100%



## NOTES



## HAND BAGS

Product is made from old recycled sack, used fabric strips as well as natural jute and organic cotton bags for useful handbags.

### Grayson Designs

Contact: Nicola Grayson

Tel: 021 553 5619

E-mail: [fashion@nicolagrayson.co.za](mailto:fashion@nicolagrayson.co.za)

Website: [www.nicolagrayson.co.za](http://www.nicolagrayson.co.za)

Physical address: 2 Starboard Way,  
Atlantic Beach, Golf Estate, Melkbos,  
Cape Town, 7441

Recycled content (estimated): 95%



## RECYCLED LP RECORD COVER HANDBAGS

Colour trimmed bags with record covers of your choice on either side.

### WOW –World of Wonder

Contact: Brue & Jean Goodall

Tel: 021 447 3814

C4 Oude Molen Village, Alexandra Rd,  
Pinelands, 7405

E-mail: [wow1@absamail.co.za](mailto:wow1@absamail.co.za)

Website: [www.worldofwonder.co.za](http://www.worldofwonder.co.za)

Recycled content (estimated): 50%



## RECYCLED LEATHER AND RUBBER PRODUCTS –PROMOTIONAL ITEMS

Keyrings, sandals, magazine holders, promotional items and many more.

### Woodheads

Contact: Richard Harris

Tel: 021 461 7185

Physical Address: 29 Caledon Street,  
Cape Town 8000

E-mail: [info@woodheads.co.za](mailto:info@woodheads.co.za)

Website: [www.woodheads.co.za](http://www.woodheads.co.za)

Recycled content (estimated): 80% - 100% of leather or rubber



## BARK JEWELRY

These products are made from of eucalyptus tree bar and sleeper wood with is 80% recyclable materials.

### Zamani Art and Design

Contact: Bradley Bailey or Richard

Cell: 083 6959495

E-mail: [bradley@zamani-art.co.za](mailto:bradley@zamani-art.co.za)/

[zamani-art@hotmail.com](mailto:zamani-art@hotmail.com)

Website: [www.zamani-art.co.za](http://www.zamani-art.co.za)

Physical address: 24 Denver Road,  
Rondebosch East, 7780

Recycled content (estimated):60-100%



## JEWELRY

Magic wallets are made of from reclaimed genuine leather and fabric.

### Switch Wallet

Contact: Byron Darroch

Cell: 078 1690515

E-mail: [byron@switchwallets.co.za](mailto:byron@switchwallets.co.za)

Website: [www.switchwallets.co.za](http://www.switchwallets.co.za)

Physical address: 3 Roseleigh Court,  
37 Rosmead Avenue, Oranjezicht, 8001

Recycled content (estimated):90%



## CERAMIC AND RECYCLED GLASS JEWELRY

Jewelry pendants made of ceramic clay and decorated with glaze and recycled wine bottle glass.

### Earthbutter Beads

Contact: Desiree Malan

Cell: 082 8623649 Fax: 021 8732786

E-mail: [earthbutterbeads@gmail.com](mailto:earthbutterbeads@gmail.com)

Website: [www.earthbutterbeads.blogspot.com](http://www.earthbutterbeads.blogspot.com)

Physical address: Breytenbach Kultuursentrum,  
Cnr Burger and Malherbe Street, Wellington, 7655

Recycled content (estimated):30-100%



## LITTLE BOTTLES, WIRE BASKETS, LAMP SHADES AND RAGS BAGS

Rag bags made of recycled materials.

### Little Shoppe & studio

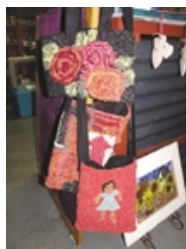
Contact: Alda du Plooy

Tel: 073 2317445

Physical Address: 3 Warrington Place,  
Harbour road, Hermanus, Western Cape

Website: [www.facebook.com:littleshoppe](http://www.facebook.com:littleshoppe)

E-mail: [thelittleshoppe@whalemail.co.za](mailto:thelittleshoppe@whalemail.co.za)



Recycled content (estimated): 40-80% recycled

## UNIQUE AND FASHIONABLE ACCESSORIES, BAGS AND WALLETS

Stationary holders, wallets, bags and document holders all made from recycled paper.

### Olly Molly

Contact: Gemma Coll

Tel: 021 868 0199 Cell: 083 4526453

E-mail: [info@ollymolly.co.za](mailto:info@ollymolly.co.za)

Physical Address: P.O. Box 932,  
Huguenot, 7645

[www.ollymolly.co.za](http://www.ollymolly.co.za)

E-mail: [info@ollymolly.co.za](mailto:info@ollymolly.co.za)



Recycled content (estimated): 90% recycled

## NOTES

## TIMBER PLASTIC PRODUCTS

Timber Plastics recycled plastic products as well as Tetra Pak cartons and uses the materials to manufacture multiple products.

### **Timber Plastics**

Contact: Mark Gibson

Tel: 0861 8467527

E-mail: mark@timberplastics.co.za

Website: www.timberplastics.co.za

Physical address: 83 Wriggle Road,  
Heriotdale

Recycled content (estimated): 100%



## THERMGUARD CELLULOSE FIBRE CEILING INSULATION

The fibrous grey matrix contains 70% recycled newspaper treated to be fire retardant. Up to 89% reduction in heat flow as tested by SABS.

### **Thermo Insulations CC**

Contact: Jason May

Tel: 021 855 5300

E-mail: thermguard@absamail.co.za

Website: www.thermguard.co.za

Recycled content (estimated): 70%



## POLYSTYRENE CHIPS FOR PACKAGING, POLYSTYRENE REGRIND (FLAKES) – FOR BEANBAGS FILLING & NURSERY INDUSTRIES

### **Isolite Moulding**

Contact: Gerrit / Gloria

Tel: 021 951 6100 Fax: 021 951 6712

E-mail: sales@isolite.co.za

Recycled content (estimated): 70%



## ROOF TILES

Roof tiles and ridges manufactured from a blend of 100% recycled plastics and sand.

### **Resintile**

Contact: Maria Muller

Cell: 082 338 5744 Fax: 086 527 4133

E-mail: maria@resintile.co.za

Website: www.resintile.co.za

Physical address: 28 Alkmaar Street,  
Paarl



Recycled content (estimated): 100%

## POLYETHYLENE SHEETING FOR BUILDING, PACKAGING AND AGRICULTURE

### **J10 Plastics**

Contact: Ezio Miglietta

Tel: 021 931 6158

Fax: 021 931 6255

Physical Address: 7 Birch Beaconvale,  
Howard Place, 7450

Website: www.jtenplastics.co.za

E-mail: sales@jtenplastics.co.za



Recycled content (estimated): 100% recycled

## SCAFFOLDING AND ROOF ECO-DECKING

All products are maintenance free made from recycled content and recycled material.

### **GreenTech**

Contact: Greg Armage

Tel: 021 761 5030

E-mail: greg@greentech.za.com

www.greentech.za.com

Physical address: Unit 94 B Urban Spin,  
Diep River, 7800



Recycled content(estimated): 50-100%

## ISOTHERM

Thermal insulation made from 100% recycled PET soft drinks bottles suitable for roofs, walls and geysers. Isotherm is 100% people friendly, safe and easy to install.

### **Brits Nonwoven**

Contact: Albert Hoenck

Tel: 021 577 1490

Email: alberth@brits.co.za

Website: www.isootherm.co.za

Physical Address: John v Niekerk Street,  
Atlantis Industria

Recycled content (estimated): 100%



## VARIOUS ECO-FRIENDLY PRODUCTS

Various products that are eco friendly aimed at improving the footprint of households and any other average person.

### **Sustainable Living**

Contact: Zeke Murphy/

Thorne Van de Merwe

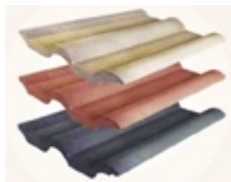
Telephone no: 021 701 2028

E-mail address: info@sustainable.co.za

Website: www.sustainable.co.za

Physical Address: 9B Bell Crescent Close,  
The green building, Westlake Business Park,  
7945, Cape Town

Recycled content (estimated): 50%



## BRICKS

Recycled crushed aggregate is used to make durable, low heat transfer bricks, blocks, retaining wall blocks, decking blocks, paving and landscaping products suitable for all types of building.

### **Cape Brick**

Contact: Jacques Tresfon

Tel: 021 511 2006 Fax: 021 510 2172

E-mail: finance@capebrick.com

Physical address: 19 Voortrekker Road,  
Salt River, Cape Town, 7925

Recycled content (estimated): 15-70%



## ALBUMS AND GIFTS

Products made of recycled paper and natural products such as rooibos tea, mielie leaf, seaweed and river reeds.

### Iziko Lo Lwazi

Contact: Fezeka Djani

Tel: 021 790 2273 Fax: 021 790 2273

E-mail: izikoll@gmail.com

Website: www.izikoll.co.za

Physical address: 1 Baviaanskloof Road, Hout Bay, 7806

Recycled content (estimated): 90%



## TONERS AND CARTRIDGES

Used cartridges are collected from customers and business. Cartridges are dissembled and cleaned and replaced with parts.

### Heldertech

Contact: Alan Bradley

Tel: 021 854 8071

E-mail: alan@heldertech.co.za

Website: www.heldertech.co.za

Physical address: Unit 2, Pro Dev Park, Gants Strand

Recycled content (estimated): 80%



## RECYCLED GIFTS AND HOMEWARE

Frames and clocks made from recycled cooldrink cans, re-used cd's and Lp records.

### Metamorphosis

Contact: Steve & Theresa Norton

Tel: 044 382 5889

Physical Address: Metamorphosis (Shop) 12 Main Road, Cnr Long Street, Knysna

E-mail: metamorphosis@cyberperk.co.za

Website: www.cyberperk.co.za/metamorphosis

Recycled content (estimated): 80% and 90%



## DESKTOP EARTH FRIENDLY PENCILS, RULERS, LANYARDS, PENCIL CASES AND DESKPADS

Paper notepads and pens made from old recycled tyres.

### Intelligent Marketing CC

Contact: Clyde Edwin Parton

Tel: 021 418 0963 Fax: 086 548 9005

E-mail: [hello@imgreen.co.za](mailto:hello@imgreen.co.za)

Website: [www.imgreen.co.za](http://www.imgreen.co.za)

Physical address: Suite 413 MSK House, Cnr. Buitengragt and Riebeek Street, Cape Town

Recycled content (estimated): 90-100%



## STATIONERY HOLDERS AND CASES

Stationery holders and document cases made from paper from printing firms or recycling plants.

### Olly Molly

Contact: Gemma Coll

Tel: 083 452 6453

E-mail: [info@ollymolly.co.za](mailto:info@ollymolly.co.za)

[www.ollymolly.co.za](http://www.ollymolly.co.za)

Physical address: The Barn, Non Pareil, Roggeland Road, Dal Josafat, Paarl

Recycled content (estimated): 90%



## PENS, PENCILS, FILES, ERASERS, FILING PRODUCTS AND MANY MORE

### Mason Complete Office Solutions

Contact: Dave Boule

Tel: 021 530 4100 Fax: 021 530 4190

E-mail: [dave@mason-cos.co.za](mailto:dave@mason-cos.co.za)

Website: [www.mason-cos.co.za](http://www.mason-cos.co.za)

Physical address: 12 Thor Circle, Viking Place, Thornton

Recycled content (estimated): 90-100%





## STATIONARY HOLDERS

---

Products are made from old boxes, milk paperboard cartons and sea stones & shells

### **Sea craft**

Contact: Michelle Williams

Cell: 073 465 6057 Fax: 022 492 3822

Physical Address: 574 Kareeboom Ave,  
Darling 7345



---

## NOTES

**CONTACTS: A/B/C/D**

Name:



Name:



Name:



Name:



Name:



Name:



Name:



Name:



Name:



Name:



Name:



Name:



Name:



# CONTACTS: E/F/G/H

Name:



Name:



Name:



Name:



Name:



Name:



Name:



Name:



Name:



Name:



Name:



Name:



Name:



E  
F  
G  
H

CONTACTS

# CONTACTS: I/J/K/L

Name:



Name:



Name:



Name:



Name:



Name:



Name:



Name:



Name:



Name:



Name:



Name:



Name:



I  
J  
K  
L

CONTACTS

# CONTACTS: M/N/O/P

Name:



Name:



Name:



Name:



Name:



Name:



Name:



Name:



Name:



Name:



Name:



Name:



Name:



M  
N  
O  
P

CONTACTS

# CONTACTS: Q/R/S/T/U

Name:



Name:



Name:



Name:



Name:



Name:



Name:



Name:



Name:



Name:



Name:



Name:



Name:



Q  
R  
S  
T  
U

CONTACTS

# CONTACTS: V/W/X/Y/Z

Name:



Name:



Name:



Name:



Name:



Name:



Name:



Name:



Name:



Name:



Name:



Name:



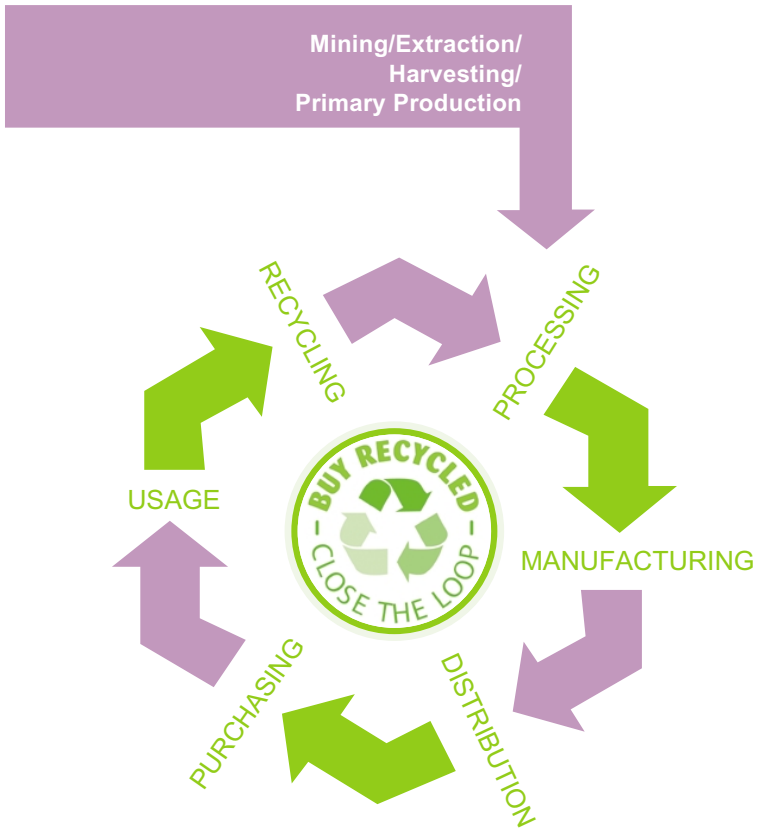
Name:



V  
W  
X  
Y  
Z

CONTACTS

# The recycling loop



## BUYING RECYCLED HAS MANY BENEFITS.

When you close the loop and buy products made from recycled materials you save energy, prevent pollution and create employment.

Making products from recycled materials saves between 35 to 90 percent of the energy that is needed to extract, refine and manufacture products from new raw materials.

Closing the loop also reduces the amount of pollutants and toxins re-leased from energy generation.

It is estimated that ten times more jobs are associated with recycling and the manufacturing of goods from recycled products that with waste disposal.

Look out for products with recycled content when you buy, and recycle and reduce your environmental impact at work and home.

(source: Solid Waste & Recycling Magazine, December/January 2007 edition)