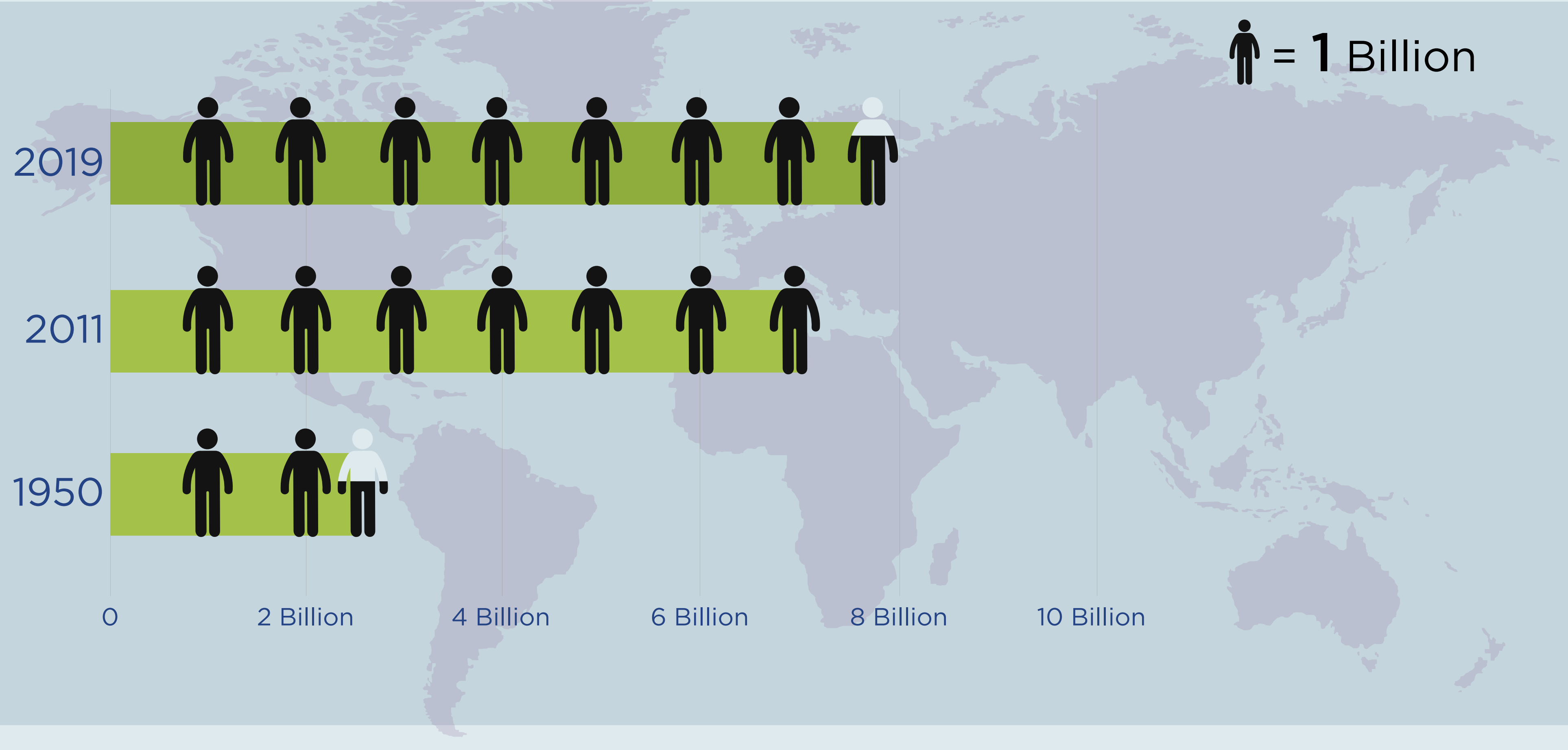


World Population Day 2019

World population growth

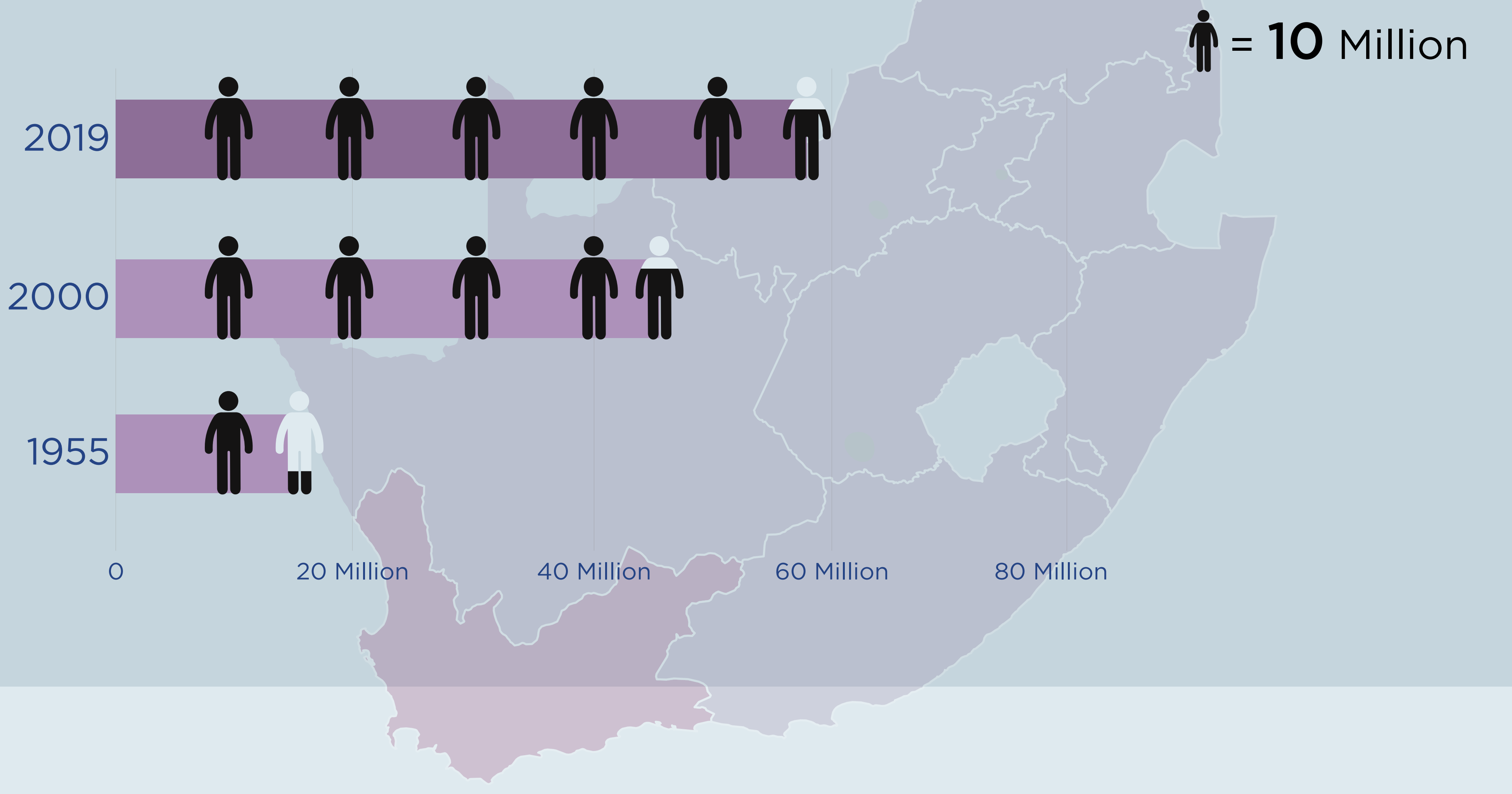


7.7 Billion people and growing

10% increase between 2011 - 2019

180% increase between 1950 - 2011

Population growth in South Africa



58 Million people

26% increase between 2000 - 2019

197% increase between 1950 - 2000

Population growth in the Western Cape



6.8 Million people

17% increase between 2011 - 2019

34% increase between 2000 - 2011

Unsustainable population growth will contribute negatively to:

- Food security
- Living standards
- Environmental pressures and climate change
- Unemployment
- Poverty levels

