



Western Cape Government
Provincial Treasury

Socio-economic Profile
Saldanha Bay Municipality

2014

Working paper

To obtain additional information of this document, please contact:

Western Cape Provincial Treasury
Local Government Budget Office
Private Bag X9165
7 Wale Street
Cape Town
tel: +27 21 483 3386 **fax:** +27 21 483 4680

This publication is available online at www.westerncape.gov.za

Contents

Saldanha Bay Municipality at a glance	1
Introduction	3
1. Demographics	4
2. Education	5
3. Health	6
4. Economic performance	7
5. Employment	9
6. Poverty	11
7. Safety and security	11
8. Access to basic services	12
9. Concluding remarks	13
Annexure A: Socio-economic snapshot	15
Annexure B: Access to basic services in municipalities across the Western Cape	17
Annexure C: Crime in municipalities across the West Coast District	18

Tables

Table 1	Education indicators in West Coast District, 2011 - 2014	5
Table 2	Healthcare facilities in West Coast District, 2014	6
Table 3	HIV/AIDS and TB treatment and care in the West Coast District, 2012/13 - 2013/14	6
Table 4	Child and maternal health in the West Coast District, 2014	7
Table 5	Net employment, 2000 - 2013	10
Table 6	Access to basic services in West Coast District	12

Figures

Figure 1	Saldanha Bay's population projections 2013 - 2017	4
Figure 2	Saldanha Bay's population age distribution, 2013	4
Figure 3	Municipal contribution to real GDP, 2000 - 2013	8
Figure 4	Saldanha Bay Municipality sectoral composition: 2011 (%)	9
Figure 5	Unemployment rates, 2001 - 2011	10
Figure 6	Percentage of households living in poverty 2001 - 2010	11
Figure 7	Crime in Saldanha Bay Municipality, 2004/05 to 2013/14	12

Saldanha Bay Municipality

Saldanha Bay Municipality at a glance

POPULATION

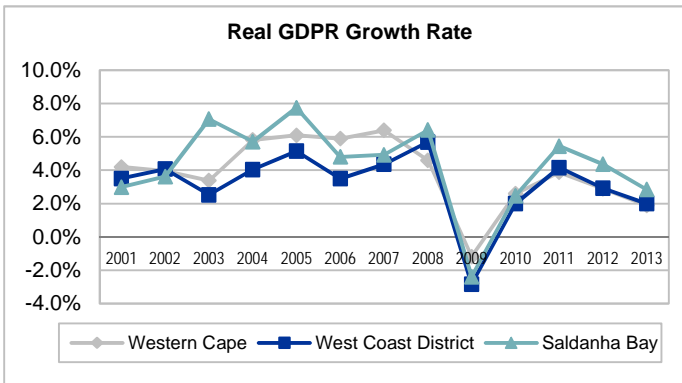
Population size (2013)	103 312
Share of District population (2013)	25.6 per cent
Average annual population growth 2011 - 2017	3.24 per cent

ECONOMY

Regional Gross Domestic Product 2013 (2005 constant prices)
R3 655 million

Share of District economy

32.12 per cent

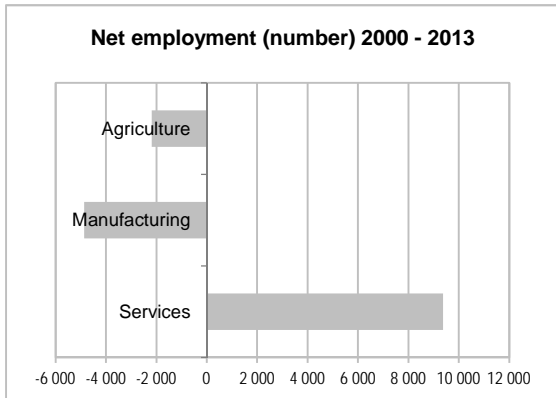
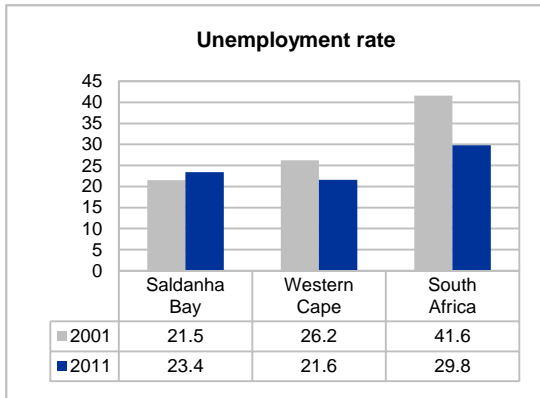


Top 3 contributing sectors, 2011 (GVA)

Finance, insurance, real estate and business services (31.7%)
General government (17.7%)
Manufacturing (13.3%)

Sector	Trend 2000 - 2013	Recovery 2010 - 2013
Agriculture	3.4	5.7
Manufacturing	-1.7	0.6
Services	6.8	5.0

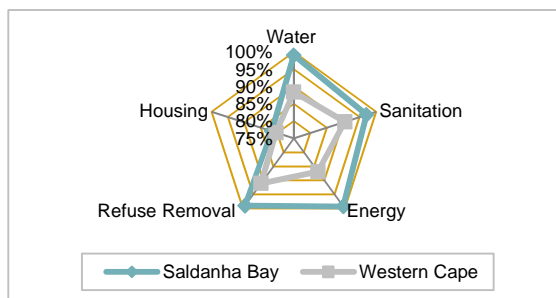
LABOUR MARKET



DEVELOPMENT

Indicator	Saldanha Bay	Western Cape
Literacy rate (2011)	86.7%	87.2%
Poverty rate (2010)	23.9%	22.1%
Human Development Index (2012)	0.71	0.71
Gini coefficient (2012)	0.56	0.60

ACCESS TO BASIC SERVICES, 2013



Introduction

Regional profiles provide the Western Cape municipalities with data and information which may assist in planning, budgeting and the prioritisation of municipal services. It is acknowledged that municipalities across the Western Cape have different capacities and therefore will use the information in this publication to suit their own needs.

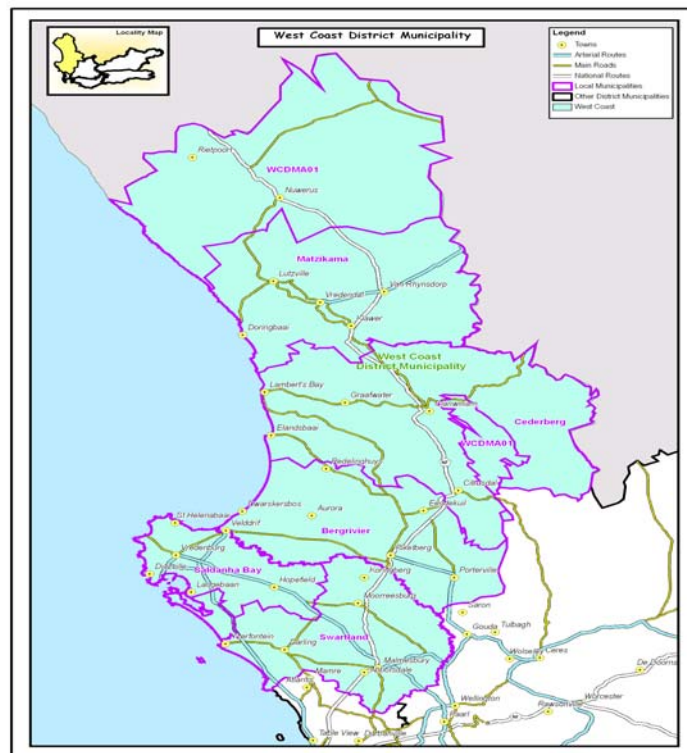
The areas covered in this profile include information on demographics, education, health, crime, poverty, housing, municipal services, labour force, economy and environmental management. Furthermore, the population projections 2013 - 2017, updated administrative data relating to health, education and South African Police Service Crime Statistics are updates from the Socio-economic Profile (SEP-LG) 2013. These updates complement Chapter 7: Socio-economic analysis and economic performance of the Municipal Economic Review and Outlook (MERO) 2014 which was published in October 2014.

The indicators reflect the socio-economic reality of municipalities. As such valuable insight can be gained as to the developmental challenges faced by communities residing within a specific geographical area.

This profile uses data primarily sourced from Statistics South Africa, administrative data from sector departments, the MERO, Global Insight Regional Explorer and Quantec. The data sourced from sector departments are the most recent that is available. The latest survey data available at municipal level from Statistics South Africa include the 2011 Census; whilst comparisons are also made with the 2001 Census.

The format of the profiles has been adjusted to focus the analysis at regional/district level whilst municipal specific profiles will also be made available separately.

The information contained in this profile therefore highlights information for the Saldanha Bay Municipality in relation to the broader Western Cape Province.

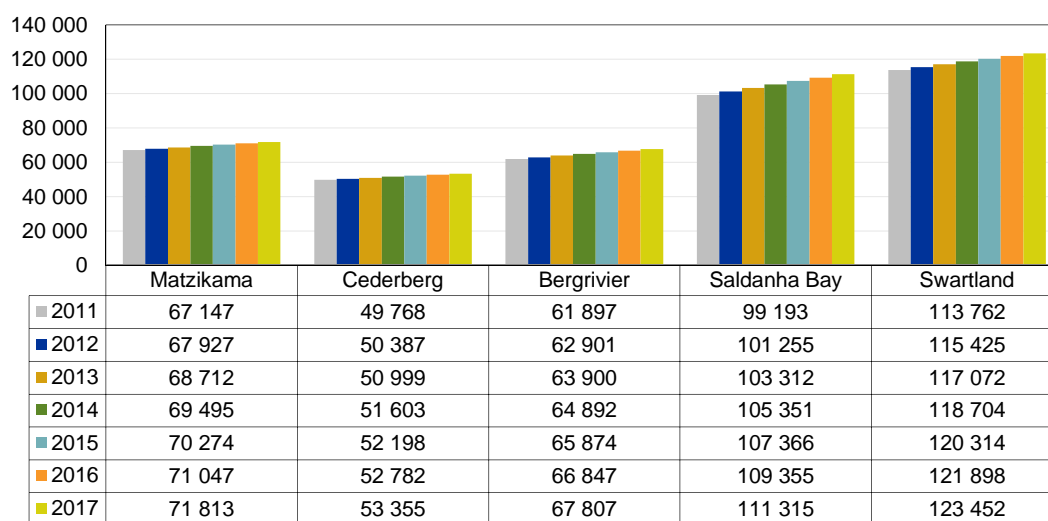


1. Demographics

1.1 Population

As per Census 2011, the Western Cape population composes of 11.25 per cent of the total population of the country with 5.8 million persons, having increased from 4.5 million in 2001. Thus the Western Cape population grew at a rate of 2.6 per cent per annum between 2001 and 2011. This is faster than the national population growth rate of 1.5 per cent and is largely due to immigration to the Western Cape, where individuals believe they can obtain jobs and better standards of living.

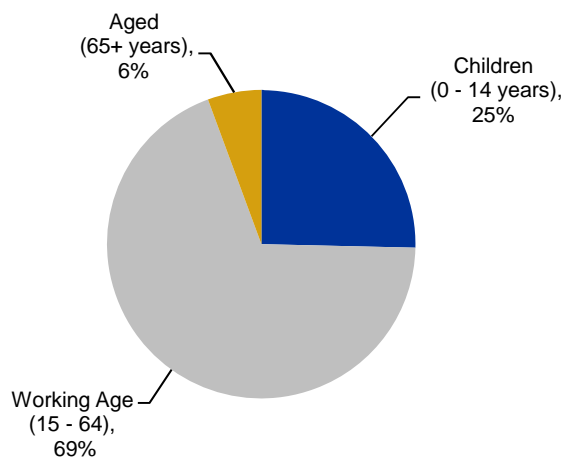
Figure 1 Saldanha Bay’s population projections 2013 - 2017



Source: Western Cape Department of Social Development, 2014

Saldanha Bay ranks second in terms of population size within the West Coast District with a figure of 103 312 people in 2013 compared to Swartland’s 117 072 for the same year. A moderate projection is predicted for 2017 with the figure rising to 111 315 people (increase of 8 003 persons).

Figure 2 Saldanha Bay’s population age distribution, 2013



Source: Western Cape Department of Social Development, 2014

Naturally the dominant economy of Saldanha Bay and the associated economic opportunity is a major factor for the projected rise in the population which is the steepest rise over the assessed period across the entire West Coast District. This is further strengthened by the dominant share of the total population by the working age category of persons (15 - 64).

2. Education

The literacy rate¹ in the Western Cape is 87.2 per cent which is higher than the literacy rate in the country as a whole of 80.9 per cent. The West Coast District (79.1 per cent) compares favourably to Cape Winelands (81.7 per cent), Overberg (81.1 per cent) and Eden (82.6 per cent) in terms of overall literacy. Saldanha Bay Municipality has the highest literacy rate compared to all municipalities in the West Coast District at 86.7 per cent. This is in line with the high levels of development in the Saldanha Bay Municipality.

Table 1 Education indicators² in West Coast District, 2011 - 2014

West Coast District	Learner enrolment (Gr 1-12 + LSEN)		Average Learner teacher ratio		Average Dropout rate		Drop in FET phase			% Literacy rate			No. of schools with libraries		No. of no fees schools	
	2013	2014	2012	2014	2012	2013	2011	2012	2013	2011	2012	2014	2012	2014		
Bergrivier	8 027	8 015	26.9	27.5	40.0%	28.9%	89.5	89.1	85.2	76.4	9	9	11	11		
Cederberg	7 533	7 455	27.8	27.9	41.6%	28.3%	97.9	90.9	91.6	73.2	8	8	20	18		
Matzikama	9 759	10 059	26.2	26.9	40.5%	44.6%	86.9	88.0	92.0	76.4	14	14	24	24		
Saldanha Bay	15 045	16 521	26.5	28.5	33.2%	33.0%	92.7	86.4	90.5	86.7	10	10	5	5		
Swartland	16 407	16 950	28.0	28.9	32.9%	28.3%	82.7	85.2	85.3	78.0	20	20	20	20		

Source: *Western Cape Education Department, 2014*

The learner enrolment figures rose marginally from 15 045 learners in 2013 to 16 521 in 2014, while the learner-teacher ratio declined to 28.5 per cent in 2014 from 26.5 per cent in 2013. A worrisome figure is the average dropout rate of 33.2 per cent in 2012, but the Matric pass rate witnessed an improvement from 86.4 per cent in 2001 to 90.5 per cent in 2013.

¹ The literacy rate is an indication of the levels of education and skill in the economy. It measures the proportion of persons aged 15 years and older with an education qualification of higher than Grade 7.

² For the "Drop % in FET phase" the enrolment for Grade 10 of 2011 is compared with the Grade 12 enrolment of 2013.

3. Health

3.1 Healthcare facilities

Table 2 Healthcare facilities in West Coast District, 2014

Regional area	Community Health Centres	Community Day Centres	Number of PHC clinics - fixed	Number of PHC clinics - non-fixed (Satellites)	Number of PHC clinics - non-fixed (mobiles)	Total number of PHC facilities (Fixed Clinics, CHCs and CDCs)	Number of district hospitals	Number of regional hospitals
Matzikama	0	0	5	9	4	5	1	0
Cederberg	0	0	6	0	4	6	2	0
Bergrivier	0	0	3	5	4	3	2	0
Saldanha Bay	0	0	8	2	2	8	1	0
Swartland	0	1	4	6	4	5	1	0
West Coast	0	1	26	22	18	27	7	0

Source: Western Cape Department of Health, 2014

Saldanha Bay has the majority of fixed/permanent structures accounting for eight clinics. Cederberg and Matzikama Municipalities follow closely with six and five clinics respectively. In total, Saldanha Bay accounts for thirteen healthcare facilities which are mirrored by Cederberg (12) and Bergrivier (13). Matzikama (19) tops the list for the number of healthcare facilities within the West Coast District, albeit the figure is bloated by the non-fixed 'satellite' clinics (9) which are encouraging given the rural status of the Matzikama area.

3.2 HIV/AIDS and Tuberculosis treatment and care

Table 3 HIV/AIDS and TB treatment and care in the West Coast District, 2012/13 - 2013/14

Regional area	HIV - Anti-retroviral treatment			Tuberculosis		
	ART patient load March 2013	ART patient load March 2014	Number of ART clinics/ treatment sites 2014	Number of TB patients 2012/13	Number of TB patients 2013/14	Number of TB clinics/ treatment sites 2014
Matzikama	569	812	7	1 004	1 015	23
Cederberg	880	1063	5	557	599	12
Bergrivier	466	601	9	395	425	16
Saldanha Bay	1 435	1779	5	852	867	15
Swartland	1 211	1298	13	700	667	19
West Coast	4 561	5553	39	3 508	3 573	85

Source: Western Cape Department of Health, 2014

Saldanha Bay has the heaviest Antiretroviral treatment (ART) patient load at 1 779 patients in March 2014, up from 1 435 patients the previous year. Given the proportion of this figure to the Saldanha Bay population figure and the anticipated population projections, this remains an area of concern. Tuberculosis (TB) appears to be relatively stable with a slight increase from 852 cases in 2012/13 to 867 cases in 2013/14. Interestingly, the number of TB clinics rank second lowest (15) after Cederberg (12) across the District.

3.3 Child and maternal health

Table 4 Child and maternal health in the West Coast District, 2014

Regional area	Child health			Maternal health				
	Full immunisation coverage rate	Number of severely malnourished children under 5 years	Severe malnutrition for children < 5 years per 100 000 population	Maternal mortality per 100 000 live births	Number of deliveries to women under 18 years	Delivery rate woman under 18 years	Number of Termination of Pregnancies performed	Termination of Pregnancy per 100 000 population
Matzikama	90.2	9	159	114	77	8.7	53	361
Cederberg	101.1	30	744	0	66	10.0	64	646
Bergrivier	93.7	1	24	0	59	11.8	20	170
Saldanha Bay	95.4	31	358	0	99	6.3	119	505
Swartland	102.9	4	57	75	114	8.5	96	514
West Coast	96.7	75	254	39	415	8.4	352	448

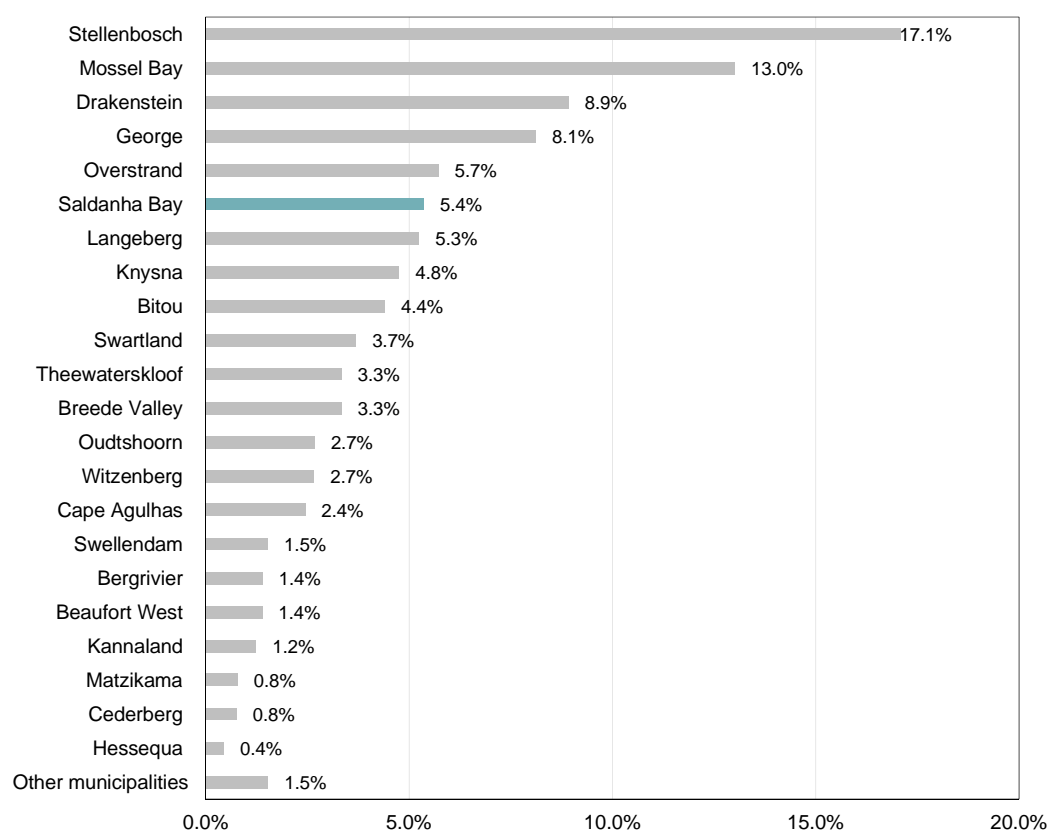
Source: Western Cape Department of Health, 2014

At a municipal level, the performance of infant healthcare is consistent across the District with most municipalities equalling 96.7 for immunisation. Saldanha Bay has recorded a figure of 95.4 per cent, slightly below that District rate. Severe malnutrition cases appear to display a disjointed picture with Saldanha Bay (31) and Cederberg (30) are notably higher than the surrounding municipalities which display figures of 9 or less cases.

Maternal mortality for Saldanha Bay reported zero cases while 'No. of deliveries to women under 18' (99) and 'Delivery rate woman under 18' (6.3 per cent) appear in line and modest when compared to District trends. The highest number of Terminations of Pregnancies were performed in Saldanha Bay (119) translating in a 'Termination of Pregnancy per 100 000 population' rate of 505; which appear to be a touch concerning with Health policies to prioritise this phenomenon.

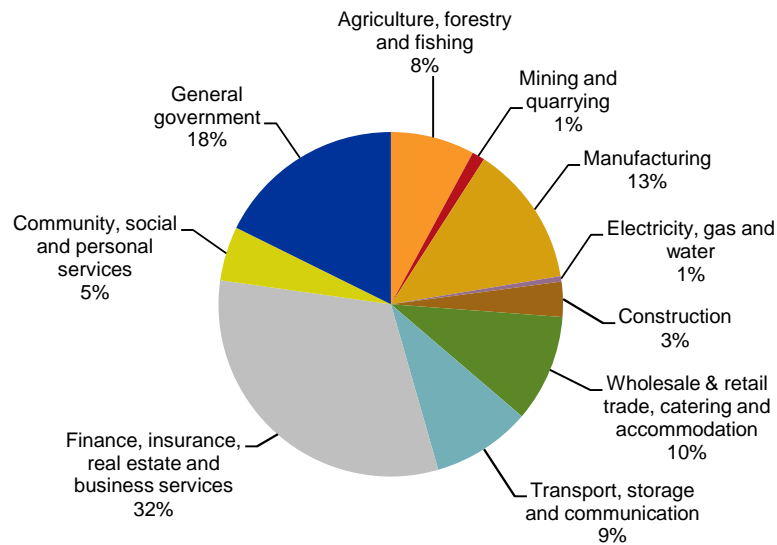
4. Economic performance

The West Coast District (WCD) real economic growth disappointed somewhat over the 2000s, i.e. when compared to economic growth in the Cape Metro and the other Western Cape districts - the average real GDP growth rate of 3.3 per cent per annum (2000 to 2011) was dragged down by a gradual contraction in the Agriculture, forestry and fishing sector (-0.4 per cent per annum).

Figure 3 Municipal contribution to real GDP, 2000 - 2013

Source: Quantec Research 2014 (MERO 2014)

The WCD regional economy grew by 3.2 per cent per annum in real terms over the period 2000 to 2013, while its workforce contracted on balance at a rate of 0.9 per cent per annum. While this growth performance is sub-par in the Western Cape, which grew by 3.9 per cent per annum on average, creating employment at an average annual rate of 0.4 per cent per annum, the District hosts two of the Province's top-10 leading growing non-metro municipalities, i.e. Saldanha Bay and Swartland - see Figure 3. Saldanha Bay contributed 5.4 per cent of the cumulative growth of the Province's non-metro municipalities, i.e. 6th on the list, and Swartland 3.7 per cent, i.e. 10th on the list. The ranking is determined by considering both the size and growth of the municipal economies. The Saldanha Bay and Swartland municipalities are both larger and faster growing in the WCD regional economy. Bergrivier, Matzikama and Cederberg, being mainly agriculture producing regions, are trailing in terms of growth and size and contributed a combined 3 per cent to the cumulative growth of the non-metro municipalities in the Province.

Figure 4 Saldanha Bay Municipality sectoral composition: 2011 (%)

Source: Quantec Research 2013, MERO 2013

In Saldanha Bay, the Finance and Business services appear to be more closely linked to a relatively large General government sector and – to a lesser extent – Manufacturing. Saldanha Bay's agricultural value added expanded strongly between 2004 and 2008 after which it has been moving sideways. The Saldanha Bay municipal Manufacturing sector real value added slumped in 2009 and has not really recovered from the recession impact; this slump is related to the recession impact on the metals industry in the region, which contracted by more than 30 per cent in 2009.

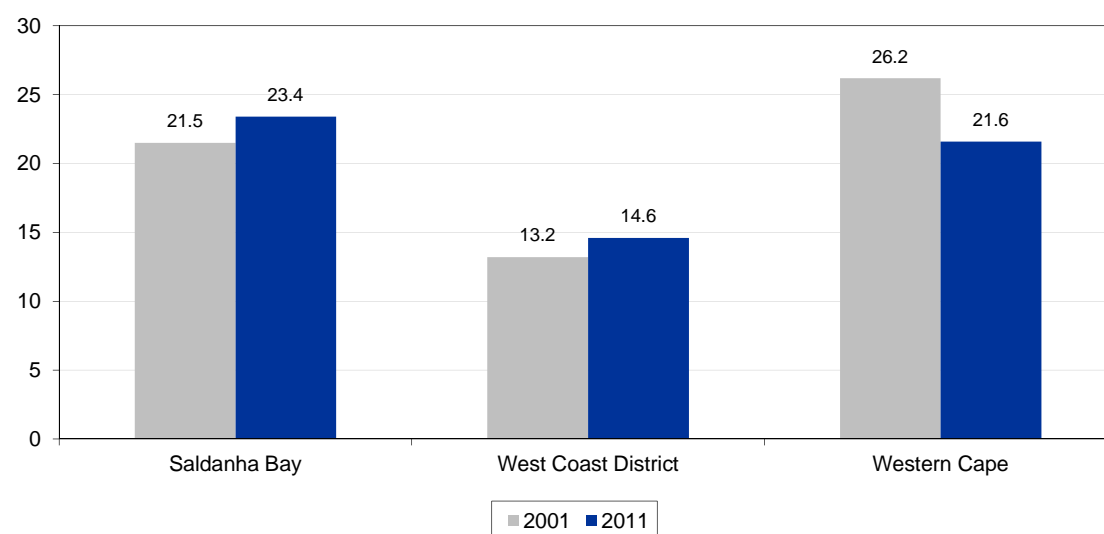
The pedestrian growth of the WCD manufacturing sector is explained to a large extent by the recessionary slump and only partial recoveries in key industries (metals and engineering, non-metal minerals, food and beverages and wood products) and the Saldanha Bay Municipality seems to be at the centre of the impact and – to a lesser extent – the Matzikama and Cederberg Municipalities (1.5 per cent).

The development of the IDZ in Saldanha Bay is likely to boost the fortunes of the local manufacturing sector, which could give rise to interesting linkages with the more buoyant Swartland and Bergvliet manufacturing sectors, in turn, stimulating supporting services activity as well. This is a factor that needs to be borne in mind with the development of the Saldanha Bay IDZ.

5. Employment

The size of Saldanha Bay's labour force is 44 829 people of which 34 359 is employed and 10 470 is unemployed. The unemployment rate was recorded as 23.4 per cent in 2011, the highest in the West Coast District.

In comparison with the District labour force, Saldanha Bay's labour force represents 27.1 per cent of the West Coast District labour force.

Figure 5 Unemployment rates, 2001 - 2011

Source: Statistics South Africa Census 2001 and 2011

The Finance, insurance, real estate and business services sector employed the most people (6 487) in 2011, followed by Wholesale and retail trade, catering and accommodation (3 976), Agriculture, forestry and fishing (2 972) and Manufacturing (2 470). The Transport, storage and communication sector employed the least people (1 170) followed by Construction (1 184).

Table 5 Net employment, 2000 - 2013

Regional area	Change in net employment (number)		
	Agricultural trend	Manufacturing trend	Services trend
	2000 - 2013	2000 - 2013	2000 - 2013
Matzikama	-3 260	-100	410
Cederberg	-3 910	-610	1 890
Bergrivier	-5 950	-490	2 000
Saldanha Bay	-2 190	-4 860	9 380
Swartland	-4 370	-1 680	2 000
Former West Coast DMA	-100	100	570
Total West Coast	-19 800	-7 600	16 200

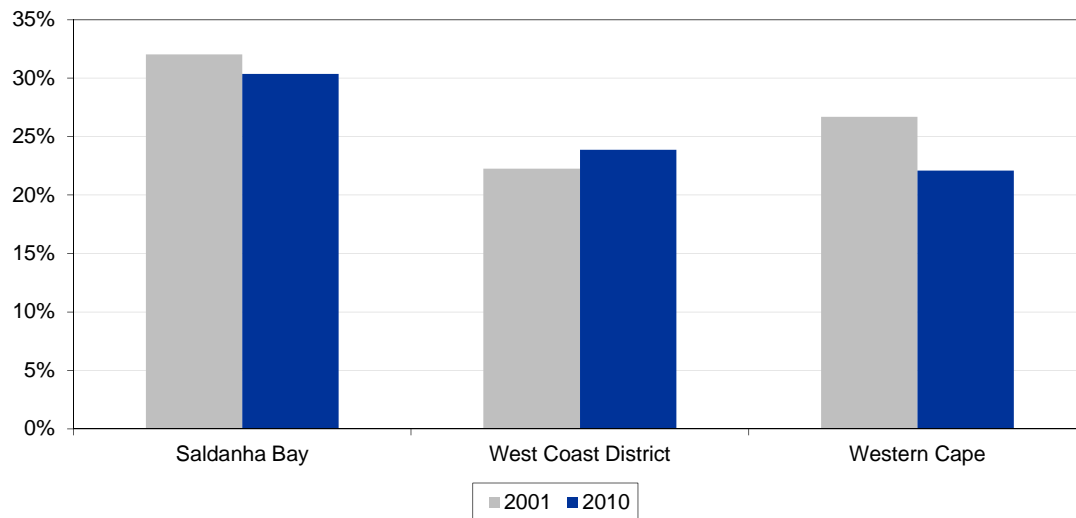
Source: Quantec Research 2014 (MERO 2014)

In relation to the net employment change for the dominant regional Broad sectors as per MERO 2014 (Agriculture, Manufacturing and Services), Saldanha Bay suffered net job losses in Agriculture (2 190) and Manufacturing (4 860). The net loss in Manufacturing had a severe impact on the entire West Coast region given the percentage share attributable to the Saldanha Bay component of this Broad sector (4 860 losses of a total net loss of 7 600 jobs for the WCD). Services on the other hand displayed robust growth in job creation/labour absorption of skilled labour accounting for 9 380 jobs during 2000 - 2013.

6. Poverty

The economic drivers of the region have recorded positive indices with Saldanha Bay and Swartland featuring prominently according to socio-economic index (SEP-LG 2013).

Figure 6 Percentage of households living in poverty 2001 - 2010



Source: IHS Global Insight, 2010

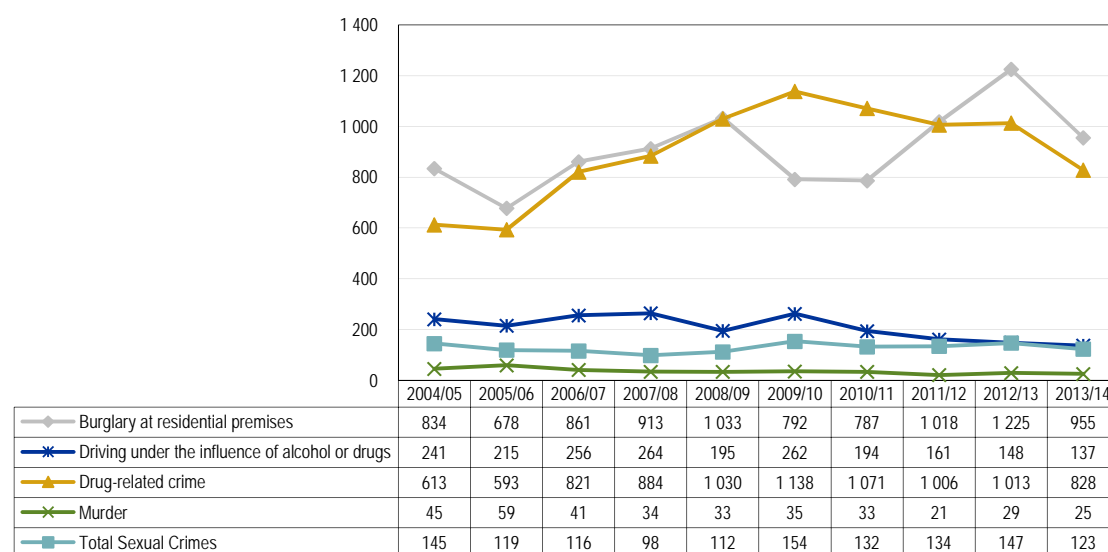
For the year 2010, rural based municipalities such as Cederberg (42.7 per cent), Berggrivier (33.8 per cent) and Matzikama (31.7 per cent) recorded alarming levels of poverty. Saldanha Bay Municipality has consistently recorded low poverty rates relative to its neighbouring municipalities hovering around 22 per cent - 23 per cent for the 2001 - 2010 periods. Saldanha Bay's poverty rates compare better than West Coast District (30.4 per cent) but slightly lower than that of the Province (22.1 per cent).

7. Safety and security

The safety of persons and property is vitally important to the physical and emotional well-being of people and business. Without the respect of person and property, it would be impossible for people to live peacefully, without fear of attack and for businesses to flourish.

Crime has a significant impact on the economy. It can hamper growth and discourage investment and capital accumulation. If it is not tackled with seriousness, it has the potential to derail both social and economic prosperity.

Peoples' general impressions, as well as the official statistics on safety and crime issues mould perceptions of areas as living spaces or place in which to establish businesses. The discussion in this section that follows is limited to the reported contact and property-related crime such as murder and sexual crimes, as well as crime heavily dependent on police action for detecting drug-related crimes and driving under the influence of alcohol/drugs; these are detailed in the figure below.

Figure 7 Crime in Saldanha Bay Municipality, 2004/05 to 2013/14

Source: South African Police Service, 2013/14

The categories pertaining to Residential burglaries and Drug-related crime are dominant in relation to crime within the Saldanha Bay Municipality. However, these two specific categories have declined somewhat since 2012/13 to the present period under review, 2013/14. Burglaries declined from a high of 1 225 in 2012/13 to 955 cases in 2013/14. Drug-related crime has made great strides in terms of curbing of this activity declining from 1 013 in 2012/13 to 828 in 2013/14 which is a notable achievement.

8. Access to basic services

The Access to Basic Services has showed little movement between 2011 - 2013. Water (99.2%), Sanitation (96.2%), Energy (97.1%) and Refuse Removal (96.5%) has remained relatively unchanged in 2013. Housing has shown a marginal decline from the 2011 figure of 82.1 per cent to 81.8 per cent in 2013.

Table 6 Access to basic services in West Coast District

Municipality	Water		Sanitation		Energy		Refuse removal		Housing	
	2011	2013	2011	2013	2011	2013	2011	2013	2011	2013
West Coast District	98.4%	98.3%	87.4%	87.4%	94.5%	94.4%	76.5%	76.6%	88.5%	88.3%
Matzikama	96.4%	96.4%	70.1%	70.0%	88.8%	88.7%	68.0%	76.6%	89.1%	88.9%
Cederberg	97.8%	97.8%	82.6%	82.5%	89.3%	89.2%	58.2%	58.2%	88.2%	88.0%
Bergrivier	98.4%	98.4%	89.8%	89.8%	94.8%	94.7%	67.1%	58.2%	94.5%	94.5%
Saldanha Bay	99.2%	99.2%	96.2%	96.2%	97.1%	97.1%	96.5%	96.5%	82.1%	81.8%
Swartland	99.0%	99.0%	90.8%	90.7%	97.7%	97.7%	76.1%	76.1%	91.3%	91.2%

Water: Piped water on community stand less than 200 m from dwelling
Sanitation: Flush toilet with septic tank
Energy: Electricity
Refuse removal: Removed by local authority at least once a week
Housing: Formal dwelling

Source: Quantec Research, 2014

The Municipality's biggest strength lies in water and energy provision as levels of access is the highest. Nevertheless, there is still room for improvement in terms of refuse removal, sanitation and particularly Housing at Saldanha Bay Municipality. This is crucial to improve the quality of life of households in the municipal area.

9. Concluding remarks

The developmental challenges facing the Saldanha Bay Municipality are real and many. As per the above analysis, the following areas require immediate intervention and policy shifts to support the numbers recorded to date:

1. Education – A worrisome figure is the average dropout rate of 33.2 per cent in 2012.
2. Health – rising HIV/AIDs and TB patient loads, low immunisation rates, and high termination of pregnancies.
3. Economic performance – The Saldanha Bay municipal Manufacturing sector real value added slumped in 2009 and has not really recovered from the recession impact; this slump is related to the recession impact on the metals industry in the region, which contracted by more than 30 per cent in 2009.
4. Basic Service Delivery – Some improvement has been shown in the provision of all basic services apart from housing within Saldanha Bay from 2001 to 2011 but remained stable thereafter. Access to formal housing has declined marginally from 82.1 to 81.1 per cent.

Annexure A

Socio-economic snapshot

Regional area	Population size			Unemployment rate		Youth unemployment		GDP (2013)		Growth Potential of Towns Study: Infrastructure Index 2013	Average household Income 2011 Stats SA												
	2001	2011	2000-2011)	2001	2011	2001	2011	GDP (R'000)	Real GDP growth (2000-2013)		None income	R1 - R4 800	R1 - R4 801 - R9 600	R19 601 - R38 200	R19 600 - R38 200	R19 601 - R38 201	R153 800 - R307 600	R153 801 - R307 601	R614 000 - R1 228 800	R614 001 - R1 228 801	R2 457 600 - R2 457 601+		
City of Cape Town	2 893 247	3 740 026	2.6%	29.2	23.9	36.8	31.9	185 662	49 647	4.1%	High	13.7%	2.7%	4%	10.6%	16%	14.5%	13%	11.9%	8.7%	3.6%	0.9%	0.5%
West Coast District	282 673	391 766	3.3%	13.2	14.6	17.3	18.2	11 382	28 173	3.3%	Low	8.2%	1.9%	3.3%	17.6%	24.7%	17.8%	11.8%	8.6%	4.4%	1.0%	0.4%	0.2%
Matzikama	50 207	67 147	2.9%	16.5	14.0	22.7	19.3	1 738	25 291	1.4%	Low	9.5%	1.9%	3.2%	17.8%	25.4%	21.1%	10.6%	6.4%	3%	0.8%	0.3%	0.2%
Cederberg	39 320	49 768	2.4%	10.2	10.5	13.3	13.8	1 013	19 858	2.2%	Medium	9.3%	1.4%	1.9%	13.5%	22.3%	22.4%	14%	9.1%	4.4%	0.8%	0.4%	0.4%
Bergvliet	46 330	61 897	2.9%	7.6	6.8	10.0	9.6	1 505	23 555	2.7%	High	13.9%	2.4%	4%	10.7%	17.4%	16.7%	15.2%	11.5%	6.1%	1.5%	0.4%	0.3%
Saldanha Bay	70 439	99 193	3.5%	21.5	23.4	26.8	30.4	3 655	35 382	4.4%	High	10.5%	1.7%	2.6%	13.4%	21.7%	20.1%	13%	9.5%	5.5%	1.5%	0.4%	0.2%
Swartland	72 118	113 762	4.7%	10.2	12.7	13.6	17.9	3 314	29 307	3.5%	High												
Cape Winelands District	629 490	787 490	2.3%	17.0	14.2	22.2	17.1	30 160	37 252	3.9%	Low	6.4%	1.9%	4%	18.5%	25.8%	20.9%	10.4%	6.8%	3.9%	0.9%	0.3%	0.2%
Witzenberg	83 570	115 946	3.3%	13.6	7.6	17.3	9.9	2 616	21 787	3.0%	Medium	13%	1.7%	3.1%	10.7%	17.2%	18.4%	13.9%	11%	7.4%	2.5%	0.7%	0.4%
Drakenstein	194 416	251 262	2.8%	22.8	17.6	29.5	24.6	9 405	36 535	2.9%	High	20.6%	2.1%	3.5%	10.2%	16.5%	15.5%	11.5%	8.5%	6.6%	3.3%	1%	0.7%
Stellenbosch	117 715	155 733	2.6%	16.9	15.2	23.1	21.5	10 117	5 111	5.1%	Medium	12%	1.7%	2.9%	14.9%	22.2%	19%	12.6%	8.5%	4.7%	1%	0.3%	0.2%
Breda Valley	146 034	166 825	1.3%	19.7	14.4	25.0	14.4	4 419	25 923	2.3%	Medium	9.7%	2.3%	4.4%	15.5%	24.9%	20%	11%	7.3%	3.6%	0.8%	0.2%	0.2%
Langeberg	81 274	97 724	1.9%	12.2	11.3	16.0	15.1	3 446	34 592	4.6%	Medium												
Overberg District	203 520	258 176	2.4%	17.5	17.0	22.4	21.4	8 083	30 403	5.2%	Medium	11.8%	1.8%	3.4%	17.7%	22.9%	19.1%	11.4%	7%	3.6%	0.9%	0.2%	0.2%
Theewaterskloof	93 276	108 790	1.6%	18.6	14.9	18.6	19.8	2 873	25 692	3.6%	High	16.4%	2.9%	4.1%	12%	17.4%	15.6%	13.7%	10.3%	5.2%	1.7%	0.4%	0.3%
Overstrand	55 735	80 432	3.7%	22.0	23.3	29.3	31.1	2 766	33 082	6.3%	High	9.6%	1.3%	2.5%	12.7%	22.8%	19.9%	14.2%	10.6%	4.7%	1.2%	0.3%	0.2%
Cape Agulhas	26 183	33 038	2.4%	13.6	13.8	19.5	19.5	1 400	41 536	5.3%	High	7.9%	1.3%	3.1%	14.3%	25.3%	20.5%	13.4%	8.2%	4.4%	0.9%	0.3%	0.3%
Swellendam	28 077	35 916	2.5%	15.7	11.4	22.1	15.0	1 021	27 785	4.6%	Medium												
Eden District	454 919	574 265	2.4%	23.4	22.5	31.2	29.3	20 362	34 655	5.2%	Low	8%	2.4%	4.7%	20.1%	28.1%	18.6%	9.3%	5.8%	2.1%	0.5%	0.2%	0.2%
Kannaland	23 975	24 767	0.3%	13.9	17.3	19.6	22.7	716	28 703	5.1%	High	7.9%	1.7%	3%	14.1%	22.5%	22.5%	14.3%	9%	3.6%	0.9%	0.3%	0.3%
Hessesqua	44 108	52 642	1.8%	14.0	14.1	19.8	18.5	1 057	19 749	1.3%	High	17.4%	2.8%	4.1%	12.5%	16%	15.4%	13.2%	10.5%	5.5%	1.7%	0.5%	0.4%
Mossel Bay	71 498	89 430	2.3%	24.7	22.9	32.5	29.9	5 651	61 186	7.5%	High	12.1%	2.6%	4.4%	13.2%	19.4%	17.3%	12.7%	9.8%	6%	1.7%	0.5%	0.3%
George	135 402	193 672	3.6%	27.8	20.7	34.5	27.6	6 149	30 889	4.0%	High	9%	2.3%	4.5%	16.3%	23.7%	18.9%	11.5%	8.4%	4.2%	0.8%	0.3%	0.2%
Oudtshoorn	84 691	95 933	1.3%	33.7	25.3	43.4	35.9	2 297	23 940	3.5%	Medium	18.1%	4.4%	5.5%	16.4%	19.7%	13.8%	9%	6.7%	4%	1.5%	0.5%	0.4%
Bloubaai	29 180	49 162	5.4%	26.3	30.1	33.4	37.9	1 662	32 411	7.7%	Low	16.4%	3.3%	4.3%	13.8%	18.8%	15%	11.1%	8.8%	5.6%	1.9%	0.6%	0.4%
Knysna	51 475	68 659	2.9%	28.3	24.8	35.1	32.3	2 507	35 593	5.6%	Medium												
Central Karoo District	60 482	71 011	1.6%	33.2	22.7	43.7	27.3	1 586	21 917	4.0%	Low	5.3%	2%	2.9%	20.9%	25.4%	21.8%	11%	6.6%	2.9%	0.7%	0.5%	0%
Langsburg	6 679	8 289	2.2%	26.3	17.9	37.0	22.0	145	17 364	2.3%	Low	6.3%	3.3%	6.1%	19.6%	26.7%	17.1%	9.4%	6.5%	3.6%	0.6%	0.3%	0.3%
Prince Albert	10 518	13 136	2.2%	35.0	19.4	44.5	25.4	225	16 786	4.0%	Low	9.5%	3.3%	5.8%	21.7%	23.8%	15.3%	9.5%	6.9%	3.2%	0.7%	0.2%	0.2%
Beaufort West	37 110	49 586	2.9%	38.2	25.5	49.7	34.5	1 087	21 485	3.8%	Medium												

Regional area	Literacy rate		Poverty rate		Human Development Index		Gini coefficient		ART patient load			Population <1 year fully immunised			
	2001	2011	2001	2010	2001	2011	2012	2001	2011	2012	2013	2014	2012	2013	2014
City of Cape Town	85.0%	90.5%	23.9%	19.7%	0.71	0.74	0.74	0.60	0.59	85 791	99 233	116 421	87.5%	89.5%	76.6%
West Coast District	71.0%	79.1%	32.0%	30.4%	0.63	0.67	0.67	0.59	0.58	3 547	4 561	5 553	97.1%	96.3%	96.7%
Matielkama	69.0%	76.4%	35.3%	31.7%	0.62	0.67	0.67	0.60	0.59	462	569	812	103.2%	105.4%	90.2%
Cederberg	66.0%	73.2%	41.2%	42.7%	0.59	0.64	0.65	0.62	0.61	666	880	1 063	91.0%	93.5%	101.1%
Bergvliet	70.0%	76.4%	34.2%	33.8%	0.61	0.66	0.66	0.56	0.58	343	466	601	93.1%	97.9%	93.7%
Saldanha Bay	79.0%	86.7%	22.3%	23.9%	0.67	0.71	0.71	0.57	0.55	1 127	1 435	1 779	85.1%	88.4%	95.4%
Swartland	69.0%	78.0%	32.8%	26.8%	0.62	0.66	0.66	0.58	0.59	929	1 211	1 298	118.2%	104.2%	102.9%
Cape Winelands District	72.0%	81.7%	30.9%	25.7%	0.63	0.69	0.68	0.60	0.58	11 830	14 170	17 463	90.0%	91.8%	100.2%
Witzenberg	65.0%	75.5%	29.8%	27.4%	0.58	0.65	0.65	0.59	0.59	1 678	2 008	2 786	73.2%	79.1%	66.7%
Drakenstein	77.0%	84.8%	27.2%	20.7%	0.65	0.70	0.70	0.59	0.56	4 103	4 627	5 276	99.8%	170.9%	105.5%
Stellenbosch	80.0%	84.9%	34.6%	25.8%	0.66	0.71	0.71	0.62	0.60	2 360	2 940	3 574	95.0%	94.0%	93.3%
Brede Valley	71.0%	82.1%	31.5%	27.0%	0.62	0.68	0.68	0.59	0.58	2 697	3 358	4 248	137.5%	100.6%	109.3%
Langeberg	62.0%	75.3%	34.1%	32.0%	0.58	0.66	0.66	0.58	0.57	992	1 237	1 579	49.7%	40.8%	63.4%
Overberg District	73.0%	81.1%	31.0%	29.6%	0.63	0.69	0.69	0.58	0.58	4 253	4 907	6 182	74.4%	75.8%	81.6%
Theewaterskloof	68.0%	78.4%	35.3%	35.0%	0.59	0.66	0.66	0.58	0.58	1 802	2 150	2 757	72.9%	82.7%	79.9%
Overstrand	81.0%	87.5%	25.6%	25.5%	0.70	0.73	0.73	0.56	0.58	1 614	2 034	2 506	75.5%	78.5%	80.3%
Cape Agulhas	76.0%	81.1%	25.1%	19.1%	0.67	0.70	0.70	0.56	0.57	228	299	372	76.8%	77.5%	85.3%
Swellendam	65.0%	74.2%	33.6%	30.7%	0.61	0.67	0.68	0.60	0.58	582	424	547	74.9%	74.4%	78.2%
Eden District	74.0%	82.6%	31.6%	21.7%	0.64	0.71	0.71	0.59	0.57	9 397	10 402	12 788	88.6%	102.8%	86.3%
Kannaland	60.0%	72.5%	43.8%	29.9%	0.56	0.66	0.65	0.59	0.57	32	100	273	70.1%	68.4%	74.3%
Hessesqua	70.0%	78.5%	28.9%	16.0%	0.63	0.70	0.70	0.56	0.54	235	364	482	85.4%	85.1%	86.4%
Mossel Bay	79.0%	85.7%	27.3%	12.4%	0.68	0.75	0.74	0.58	0.55	1 758	2 117	2 490	85.7%	88.9%	77.0%
George	76.0%	83.4%	26.2%	20.4%	0.66	0.71	0.71	0.58	0.56	3 377	3 886	4 534	89.2%	91.9%	87.6%
Oudtshoorn	71.0%	79.4%	43.8%	34.1%	0.59	0.66	0.66	0.59	0.57	867	740	1 109	86.6%	79.5%	90.3%
Blou	76.0%	85.8%	33.5%	27.2%	0.65	0.71	0.71	0.61	0.63	1 383	1 578	1 640	84.7%	85.5%	78.5%
Knysna	78.0%	85.1%	24.2%	15.0%	0.68	0.73	0.73	0.58	0.57	1 729	1 617	2 260	111.0%	116.4%	102.5%
Central Karoo District	63.0%	73.4%	38.7%	32.5%	0.57	0.65	0.65	0.59	0.57	715	949	1 174	80.3%	77.0%	79.2%
Laingsburg	58.0%	70.0%	37.6%	36.1%	0.56	0.65	0.64	0.59	0.57	62	78	119	94.7%	75.0%	89.4%
Prince Albert	59.0%	69.9%	44.1%	43.3%	0.55	0.63	0.63	0.61	0.57	61	131	151	53.0%	94.1%	82.4%
Beaufort West	68.0%	74.9%	37.5%	29.1%	0.58	0.65	0.65	0.59	0.56	592	740	904	89.0%	77.0%	77.2%

Annexure B

Access to basic services in municipalities across the Western Cape

Regional area	Percentage of Household with Minimal Service Level - Census 2001 - 2011									
	Water 2001	Water 2011	Sanitation 2001	Sanitation 2011	Energy 2001	Energy 2011	Refuse 2001	Refuse 2011	Housing 2001	Housing 2011
City of Cape Town	98.7%	99.3%	87.3%	91.1%	88.8%	94.2%	93.0%	94.0%	83.0%	89.5%
West Coast District	98.0%	99.2%	85.8%	92.0%	81.4%	94.8%	68.0%	76.0%	93.0%	93.0%
Matzikama	92.0%	96.0%	77.9%	83.6%	97.8%	98.7%	59.0%	68.0%	89.9%	88.4%
Cederberg	96.0%	98.0%	82.7%	89.1%	98.4%	96.4%	50.0%	58.0%	93.3%	87.1%
Bergrivier	94.0%	99.0%	88.4%	92.7%	98.8%	98.8%	57.0%	67.0%	93.4%	93.4%
Saldanha Bay	95.0%	99.0%	96.3%	97.1%	95.0%	99.3%	94.0%	97.0%	84.5%	81.7%
Swartland	93.0%	99.0%	85.7%	93.0%	96.8%	99.5%	70.0%	76.0%	93.4%	90.9%
Cape Winelands District	98.0%	99.2%	86.5%	93.2%	88.5%	93.2%	70.0%	80.0%	82.7%	91.2%
Witzenberg	94.9%	98.6%	86.3%	94.5%	95.7%	97.5%	58.0%	71.0%	89.0%	86.2%
Drakenstein	92.0%	99.0%	91.1%	95.1%	92.0%	97.3%	76.0%	86.0%	82.0%	85.0%
Stellenbosch	90.3%	94.9%	90.7%	94.0%	95.9%	95.3%	80.0%	97.0%	81.4%	75.1%
Breede Valley	93.4%	96.5%	87.6%	91.2%	95.1%	92.5%	66.0%	76.0%	87.2%	77.9%
Langeberg	92.8%	96.5%	83.5%	93.3%	97.7%	98.5%	62.0%	73.0%	92.9%	90.7%
Overberg District	98.8%	99.2%	84.7%	92.0%	83.9%	91.5%	77.0%	83.0%	87.9%	91.3%
Theewaterskloof	90.0%	96.9%	80.2%	87.4%	90.6%	92.8%	70.0%	79.0%	77.8%	80.3%
Overstrand	95.1%	98.6%	89.5%	96.5%	92.8%	94.8%	88.0%	92.0%	83.6%	80.1%
Cape Agulhas	97.3%	97.4%	86.9%	91.9%	99.1%	99.1%	79.0%	80.0%	91.3%	85.2%
Swellendam	93.2%	96.2%	83.2%	90.6%	99.0%	99.1%	71.0%	74.0%	88.4%	88.3%
Eden District	95.7%	97.8%	80.7%	87.1%	85.6%	91.4%	81.0%	86.0%	77.9%	91.1%
Kannaland	92.0%	94.0%	64.0%	78.0%	93.3%	98.1%	58.0%	66.0%	96.9%	96.3%
Hessequa	96.0%	98.0%	83.0%	92.0%	88.9%	98.4%	71.0%	79.0%	93.2%	93.8%
Mossel Bay	96.0%	96.0%	91.0%	93.0%	87.3%	97.0%	89.0%	93.0%	85.5%	85.9%
George	92.0%	96.0%	84.0%	89.0%	87.3%	94.1%	85.0%	88.0%	80.9%	83.9%
Oudtshoorn	93.0%	95.0%	82.0%	82.0%	87.6%	96.9%	81.0%	78.0%	87.0%	88.5%
Bitou	90.0%	93.0%	81.0%	84.0%	86.9%	90.6%	85.0%	88.0%	79.8%	72.2%
Knysna	84.0%	94.0%	83.0%	83.0%	81.0%	88.3%	85.0%	93.0%	68.6%	73.8%
Central Karoo District	98.9%	99.4%	85.5%	90.0%	83.9%	89.7%	77.7%	78.7%	96.9%	96.7%
Laingsburg	98.2%	99.4%	74.4%	83.1%	73.4%	83.3%	63.1%	59.5%	96.6%	96.6%
Prince Albert	98.0%	99.3%	79.0%	84.5%	80.0%	90.1%	71.6%	73.4%	94.2%	93.9%
Beaufort West	99.0%	99.4%	90.0%	92.8%	87.2%	93.4%	85.4%	83.7%	95.8%	97.9%
Western Cape	85.2%	88.4%	86.5%	90.5%	78.8%	86.9%	88.8%	91.1%	81.3%	80.4%
South Africa	61%	73.4%	53.8%	62.6%	51.4%	73.9%	57.0%	63.6%	68.5%	77.6%

Annexure C

Crime in municipalities across the West Coast District

Regional area	Crime per category											
	2004/05	2005/06	2006/07	2007/08	2008/09	2009/10	2010/11	2011/12	2012/13	2013/14		
Bergvliet												
Burglary at residential premises	146	138	153	141	145	177	153	211	259	205		
Driving under the influence of alcohol or drugs	70	94	112	116	73	73	91	70	52	66		
Drug-related crime	954	760	854	728	803	729	853	949	1 077	1 073		
Murder	19	11	12	15	19	18	12	10	7	11		
Total Sexual Crimes	60	72	79	106	98	87	85	85	89	81		
Cederberg												
Burglary at residential premises	235	194	144	155	171	188	193	226	207	227		
Driving under the influence of alcohol or drugs	51	69	80	75	90	91	75	70	63	48		
Drug-related crime	687	634	664	764	743	562	654	549	751	819		
Murder	22	29	25	15	25	16	24	27	33	26		
Total Sexual Crimes	111	91	106	111	109	113	127	151	128	133		
Matzikama												
Burglary at residential premises	328	180	177	188	278	284	238	276	324	350		
Driving under the influence of alcohol or drugs	84	84	86	113	89	104	152	98	77	101		
Drug-related crime	613	494	555	600	395	550	696	534	540	649		
Murder	25	40	31	36	25	30	28	26	26	32		
Total Sexual Crimes	133	104	140	137	113	160	139	156	156	172		
Saldanha												
Burglary at residential premises	834	678	861	913	1 033	792	787	1 018	1 225	955		
Driving under the influence of alcohol or drugs	241	215	256	264	195	262	194	161	148	137		
Drug-related crime	613	593	821	884	1 030	1 138	1 071	1 006	1 013	828		
Murder	45	59	41	34	33	35	33	21	29	25		
Total Sexual Crimes	145	119	116	98	112	154	132	134	147	123		
Swartland												
Burglary at residential premises	558	484	459	483	510	546	495	504	592	675		
Driving under the influence of alcohol or drugs	103	146	169	150	154	156	265	227	139	142		
Drug-related crime	592	519	629	711	803	1 052	1 145	1 405	1 509	1 878		
Murder	47	44	50	38	21	28	20	30	33	20		
Total Sexual Crimes	194	209	169	178	151	174	199	179	205	191		
West Coast District												
Burglary at residential premises	2 101	1 674	1 794	1 880	2 137	1 987	1 866	2 235	2 607	2 412		
Driving under the influence of alcohol or drugs	549	608	703	718	601	666	777	626	479	494		
Drug-related crime	3 459	3 000	3 523	3 687	3 774	4 031	4 419	4 443	4 890	5 247		
Murder	158	183	159	138	123	127	117	114	128	114		
Total Sexual Crimes	643	595	610	630	583	688	682	705	725	700		