



**Western Cape Government  
Provincial Treasury**

**Socio-economic Profile  
Matzikama Municipality**

**2014**

Working paper

To obtain additional information of this document, please contact:

Western Cape Provincial Treasury  
Local Government Budget Office  
Private Bag X9165  
7 Wale Street  
Cape Town  
**tel:** +27 21 483 3386 **fax:** +27 21 483 4680

This publication is available online at [www.westerncape.gov.za](http://www.westerncape.gov.za)

# Contents

Matzikama Municipality at a glance	1
Introduction	3
1. Demographics	4
2. Education	5
3. Health	6
4. Economic performance	7
5. Employment	9
6. Poverty	11
7. Safety and security	12
8. Access to basic services	12
9. Concluding remarks	13
Annexure A: Socio-economic snapshot	15
Annexure B: Access to basic services in municipalities across the Western Cape	17
Annexure C: Crime in municipalities across the West Coast District	18

## Tables

Table 1	Education indicators in West Coast District, 2011 - 2014	5
Table 2	Healthcare facilities in West Coast District, 2014	6
Table 3	HIV/AIDS & TB treatment care in West Coast District, 2012/13 to 2013/14	6
Table 4	Child and maternal Health in West Coast District, 2014	7
Table 5	Matzikama sectoral growth, 2000 - 2013	9
Table 6	Net employment, 2000 - 2013	10
Table 7	Household income across municipalities in West Coast District, 2011	11
Table 8	Access to basic services in the West Coast District	12

## Figures

Figure 1	Population projections, 2013 - 2017	4
Figure 2	Matzikama population age distribution, 2013	5
Figure 3	Matzikama sectoral composition: 2011	8
Figure 4	Municipal contribution to real GDP, 2000 - 2013	8
Figure 5	Unemployment rates, 2001 - 2011	10
Figure 6	Percentage of households living in poverty, 2001 - 2010	11
Figure 7	Crime in Matzikama Municipality, 2004/05 to 2013/14	12



# Matzikama Municipality

## Matzikama Municipality at a glance

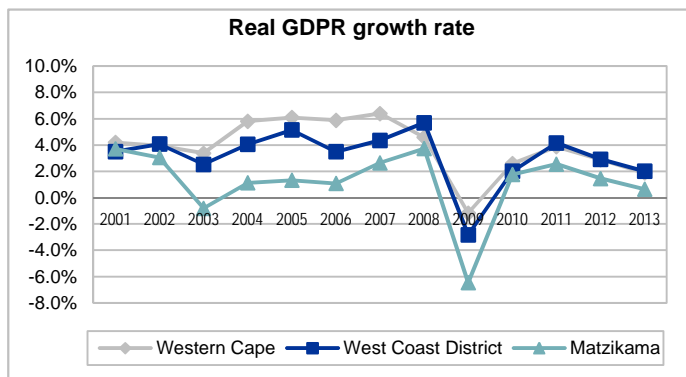
### POPULATION

Population size (2013)	68 712
Share of District population (2013)	17.01 per cent
Average annual population growth 2011 - 2017	2.7 per cent

### ECONOMY

Regional Gross Domestic Product 2013 (2005 constant prices)  
R1 938 million

Share of District economy  
15.27 per cent



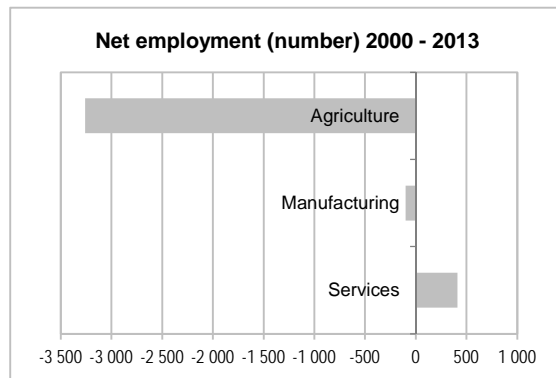
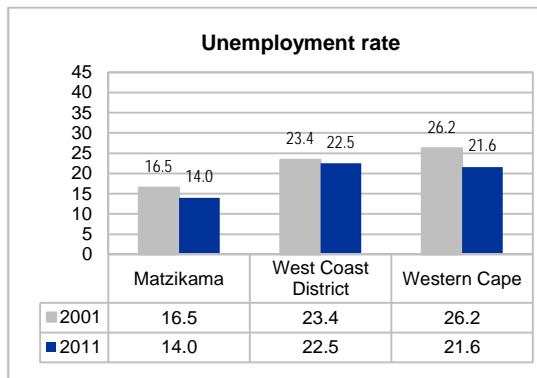
### Top 3 contributing sectors by sectorial composition, 2011 (GVA)

Agriculture, forestry and fishing (18.9%)  
Manufacturing (17.3%)  
Transport, storage and communication (16.2%)

### Real GDP growth yoy % per sector

Sector	Trend 2000 - 2013	Recovery 2010 - 2013
Agriculture	-0.3	0.5
Manufacturing	0.6	2.0
Services	3.3	1.9

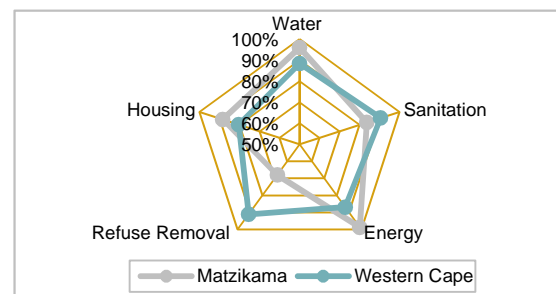
### LABOUR MARKET



### DEVELOPMENT

Indicator	Matzikama	Western Cape
Literacy rate (2011)	76.4%	87.2%
Poverty rate (2010)	31.7%	22.1%
Human Development Index (2012)	0.67	0.71
Gini coefficient (2012)	0.60	0.60

### ACCESS TO BASIC SERVICES, 2013





## Introduction

Regional profiles provide the Western Cape municipalities with data and information which may assist in planning, budgeting and the prioritisation of municipal services. It is acknowledged that municipalities across the Western Cape have different capacities and therefore will use the information in this publication to suit their own needs.

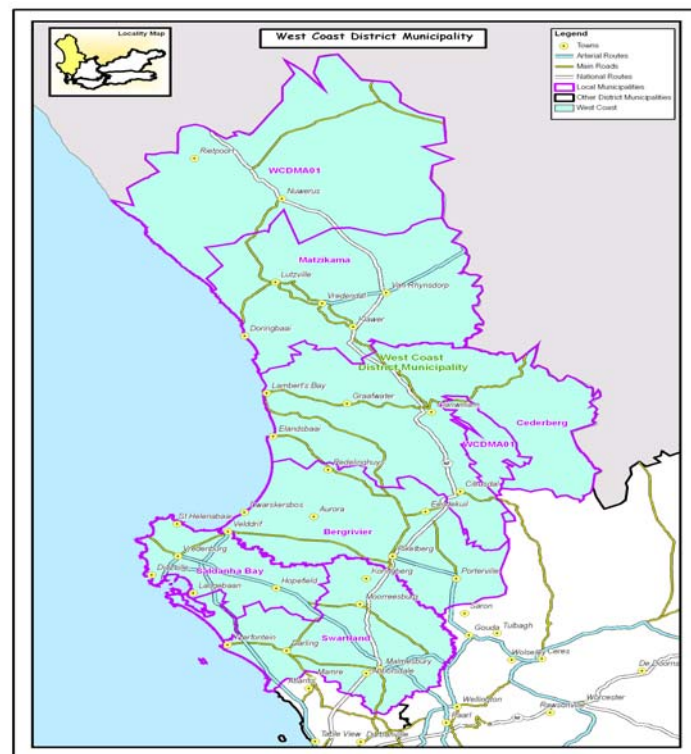
The areas covered in this profile include information on demographics, education, health, crime, poverty, housing, municipal services, labour force, economy and environmental management. Furthermore, the population projections 2013 – 2017, updated administrative data relating to health, education and South African Police Service Crime Statistics are updates from the Socio-economic Profile (SEP-LG) 2013. These updates complement Chapter 7: Socio-economic analysis and economic performance of the Municipal Economic Review and Outlook (MERO) 2014 which was published in October 2014.

The indicators reflect the socio-economic reality of municipalities. As such valuable insight can be gained as to the developmental challenges faced by communities residing within a specific geographical area.

This profile uses data primarily sourced from Statistics South Africa, administrative data from sector departments, the MERO, Global Insight Regional Explorer and Quantec. The data sourced from sector departments are the most recent that is available. The latest survey data available at municipal level from Statistics South Africa include the 2011 Census; whilst comparisons are also made with the 2001 Census.

The format of the profiles has been adjusted to focus the analysis at regional/district level whilst municipal specific profiles will also be made available separately.

The information contained in this profile therefore highlights information for the Matzikama Municipality in relation to the broader Western Cape Province.

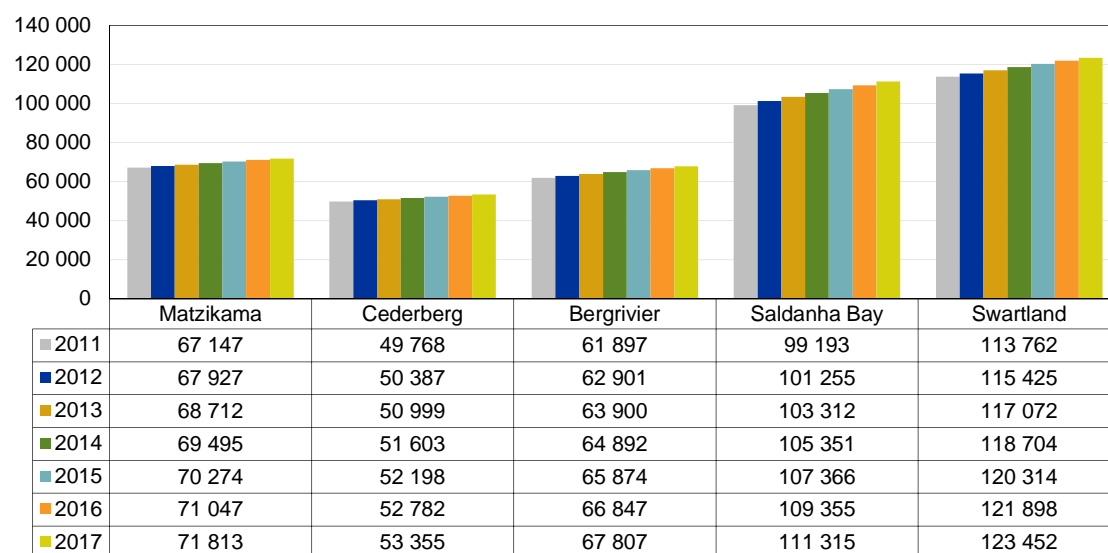


## 1. Demographics

As per Census 2011, the Western Cape population composes of 11.25 per cent of the total population of the country with 5.8 million persons, having increased from 4.5 million in 2001. Thus the Western Cape population grew at a rate of 2.6 per cent per annum between 2001 and 2011. This is faster than the national population growth rate of 1.5 per cent and is largely due to immigration to the Western Cape, where individuals believe they can obtain jobs and better standards of living.

The population of Matzikama accounts for the third largest proportion of the West Coast District population after Swartland and Saldanha Bay with a population of 67 147 and grew by 2.9 per cent on average per annum from 50 207 in 2001 to 67 147 in 2011.

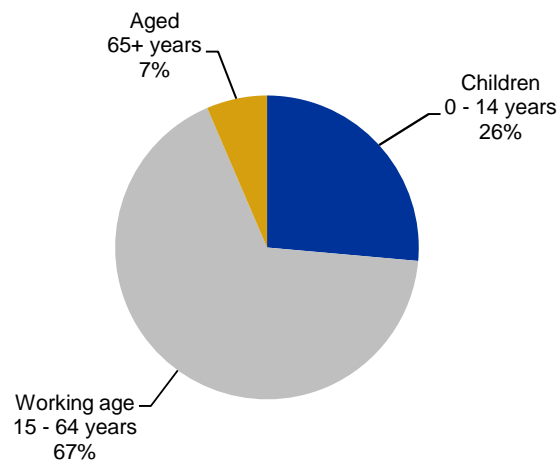
**Figure 1 Population projections, 2013 - 2017**



Source: Western Cape Department of Social Development, 2014

The projections for 2013 are in line with the prevailing trends for the past decade. Population numbers in Matzikama are projected to rise from 68 712 in 2013 to 71 813 in 2017 which is steady when compared to the marginal increases in the 'Bigger' municipal areas of Saldanha Bay and Swartland which account for a greater percentage share of the West Coast District's population and economic activity. This translates to an increased need to address the socio-economic and broad economic challenges within the Matzikama region going forward.



**Figure 2 Matzikama population age distribution, 2013**

Source: Western Cape Department of Social Development, 2014

In relation to the Age Distribution within the Matzikama Municipality, the working age segment of the population accounts for 67 per cent while 26 per cent is attributable to the 'children' category and 7 per cent making up the 'Aged' category. From an economic standpoint, the labour force appeared to be well endowed with a fair representation of youth. The 'Aged' category is small in comparison.

## 2. Education

The literacy rate<sup>1</sup> in the Western Cape is 87.2 per cent which is higher than the literacy rate in the country as a whole of 80.9 per cent. The West Coast District compares favourably to Cape Winelands (81.7 per cent), Overberg (81.1 per cent) and Eden (82.6 per cent) in terms of overall literacy. Matzikama Municipality has the second lowest literacy rate compared to all municipalities in the West Coast District at 76.4 per cent.

**Table 1 Education indicators in West Coast District, 2011 - 2014**

West Coast District	Learner enrolment (Gr 1-12 + LSEN)		Average Learner-teacher ratio		Average Dropout rate		Drop in FET phase			% Matric pass rate			% Literacy rate	No. of schools with libraries		No. of no fees schools	
	2013	2014	2012	2014	2012	2013	2011	2012	2013	2011	2012	2014	2012	2014			
Bergervier	8 027	8 015	26.9	27.5	40.0%	28.9%	89.5	89.1	85.2	76.4	9	9	11	11			
Cederberg	7 533	7 455	27.8	27.9	41.6%	28.3%	97.9	90.9	91.6	73.2	8	8	20	18			
<b>Matzikama</b>	<b>9 759</b>	<b>10 059</b>	<b>26.2</b>	<b>26.9</b>	<b>40.5%</b>	<b>44.6%</b>	<b>86.9</b>	<b>88.0</b>	<b>92.0</b>	<b>76.4</b>	<b>14</b>	<b>14</b>	<b>24</b>	<b>24</b>			
Saldanha Bay	15 045	16 521	26.5	28.5	33.2%	33.0%	92.7	86.4	90.5	86.7	10	10	5	5			
Swartland	16 407	16 950	28.0	28.9	32.9%	28.3%	82.7	85.2	85.3	78.0	20	20	20	20			

Source: Western Cape Education Department, 2014

The learner enrolment figures improved notably from 9 759 learners in 2013 to 10 059 in 2014 while the learner-teacher ratio remained relatively constant at 26.9 per cent in 2014 compared to 26.2 per cent in 2012. A worrisome figure is the average dropout rate of 40.5 per cent in 2012 while the Matric pass rate has increased to 92 per cent in

<sup>1</sup> The literacy rate is an indication of the levels of education and skill in the economy. It measures the proportion of persons aged 15 years and older with an education qualification of higher than Grade 7.

2013 from 88.0 per cent in 2012. This is encouraging given the levels of employment and associated skills sets required for value adding production across the Matzikama local economy which is discussed in the ensuing sections of this profile as well as in the MERO 2014.

### 3. Health

#### 3.1 Healthcare facilities

**Table 2 Healthcare facilities in West Coast District, 2014**

Regional area	Community Health Centres	Community Day Centres	Number of PHC clinics - fixed	Number of PHC clinics - non-fixed (Satellites)	Number of PHC clinics - non-fixed (mobiles)	Total number of PHC facilities (Fixed Clinics, CHCs and CDCs)	Number of district hospitals	Number of regional hospitals
Matzikama	0	0	5	9	4	5	1	0
Cederberg	0	0	6	0	4	6	2	0
Bergrivier	0	0	3	5	4	3	2	0
Saldanha Bay	0	0	8	2	2	8	1	0
Swartland	0	1	4	6	4	5	1	0
<b>West Coast</b>	<b>0</b>	<b>1</b>	<b>26</b>	<b>22</b>	<b>18</b>	<b>27</b>	<b>7</b>	<b>0</b>

Source: Western Cape Department of Health, 2014

Matzikama displays a fair spread of healthcare facilities for 2014. Fixed PHC clinics account for 5 of the West Coast's 26 clinics for this category. Matzikama lead the way with 9 non-fixed or satellite clinics which is the highest in the West Coast District while non-fixed (mobiles) equal the District trend of 4 per municipality. More interestingly, the total number healthcare facilities (19); is the highest total for a municipality in the District.

**Table 3 HIV/AIDS & TB treatment care in West Coast District, 2012/13 to 2013/14**

Regional area	HIV - Anti-retroviral treatment			Tuberculosis		
	ART patient load March 2013	ART patient load March 2014	Number of ART clinics/ treatment sites 2014	Number of TB patients 2012/13	Number of TB patients 2013/14	Number of TB clinics/ treatment sites 2014
Matzikama	569	812	7	1 004	1 015	23
Cederberg	880	1 063	5	557	599	12
Bergrivier	466	601	9	395	425	16
Saldanha Bay	1 435	1 779	5	852	867	15
Swartland	1 211	1 298	13	700	667	19
<b>West Coast</b>	<b>4 561</b>	<b>5 553</b>	<b>39</b>	<b>3 508</b>	<b>3 573</b>	<b>85</b>

Source: Western Cape Department of Health, 2014

The Antiretroviral treatment (ART) patient load has increased steadily for Matzikama from 569 in 2013 to 812 in March 2014. The number of ART sites (7) is second highest in the District compared to Swartland's 13. Worryingly, the number of Tuberculosis (TB) patients is considerably high (especially in view of the Matzikama population share) at 1 015 cases compared to the 867 of Saldanha Bay and 667 of Swartland. However, the number of TB clinics at 23 is the highest number recorded in the West Coast District.

**Table 4 Child and maternal Health in West Coast District, 2014**

Regional area	Child health			Maternal health				
	Full immunisation coverage rate	Number of severely malnourished children under 5 years	Severe malnutrition for children < 5 years per 100 000 population	Maternal mortality per 100 000 live births	Number of deliveries to women under 18 years	Delivery rate woman under 18 years	Number of Termination of Pregnancies performed	Termination of Pregnancy per 100 000 population
Matzikama	90.2	9	159	114	77	8.7	53	361
Cederberg	101.1	30	744	0	66	10.0	64	646
Bergrivier	93.7	1	24	0	59	11.8	20	170
Saldanha Bay	95.4	31	358	0	99	6.3	119	505
Swartland	102.9	4	57	75	114	8.5	96	514
<b>West Coast</b>	<b>96.7</b>	<b>75</b>	<b>254</b>	<b>39</b>	<b>415</b>	<b>8.4</b>	<b>352</b>	<b>448</b>

Source: Western Cape Department of Health, 2014

The full immunisation coverage rate of 90.2 is the lowest in the West Coast District and below the District average of 96.7. Severe malnutrition cases accounted for 159 per 100 000 children under 5 years of age which well below the District's average. Maternal mortality is a cause for concern with 114 cases reported topping the populous area of Saldanha Bay by 39 cases. The termination of pregnancies is second lowest in the West Coast region at 361 per 100 000 of the population.

#### 4. Economic performance

The three municipalities of particular concern to overall economic growth within the WCD, i.e. Bergrivier (2.8 per cent per annum), Cederberg (2.2 per cent) and Matzikama (1.5 per cent), have a notable contraction of the Agriculture sector as a key feature.

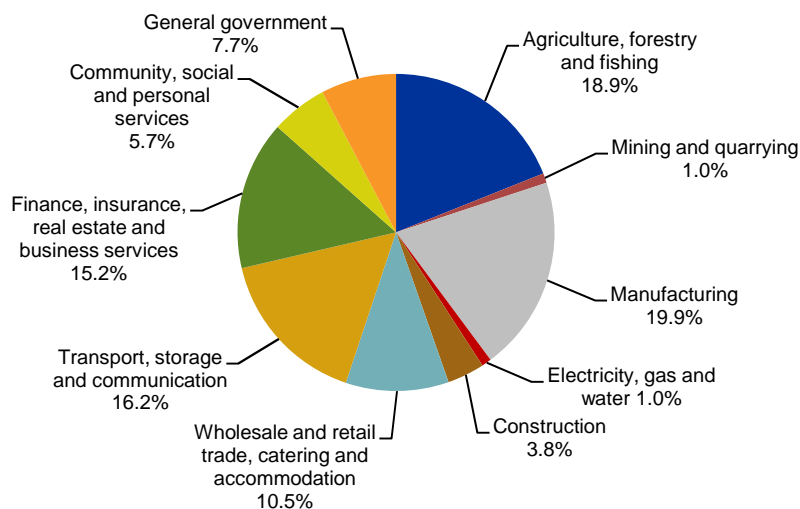
Given the relative importance of the Agriculture sector within the Matzikama municipal economy and its implications for rural employment, the short-term economic prospects look bleak.

The pedestrian growth of the WCD Manufacturing sector is explained to a large extent by the recessionary slump and only partial recoveries in key industries (metals and engineering, non-metal minerals, food and beverages and wood products) and the Saldanha Bay Municipality seems to be at the centre of the impact and – to a lesser extent – the Matzikama and Cederberg Municipalities.

All the WCD municipal Services sectors expanded noticeably over the 2000 - 2011 period, with the Matzikama Services sector expanding the slowest, i.e. by around 2.7 per cent per annum.

Manufacturing is the largest contributing sector towards GDP in Matzikama (19.9 per cent). This is followed by Agriculture, forestry and fishing (18.9 per cent) and Transport, storage and communication (16.2 per cent). The smallest contributing sectors are Electricity, gas and water and Mining and quarrying at 1.0 per cent each.

**Figure 3 Matzikama sectoral composition: 2011**

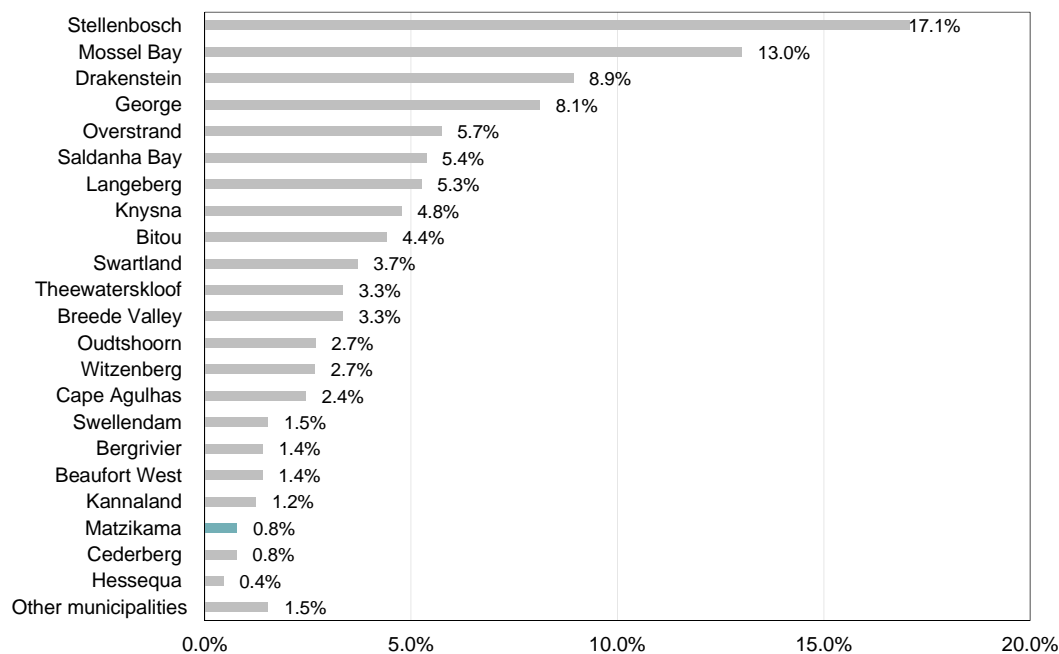


Source: Quantec Research 2013 (MERO 2013)

The pedestrian growth of the WCD Manufacturing sector is explained to a large extent by the recessionary slump and only partial recoveries in key industries (metals & engineering, non-metal minerals, food & beverages and wood products) and the Saldanha Bay Municipality seems to be at the centre of the impact and – to a lesser extent – the Matzikama and Cederberg Municipalities (1.5 per cent).

While the recovery in the Manufacturing sector has been encouraging, producers will find tight selling conditions in the local consumer market over the near term, even in the relatively livelier durable goods market (benefiting from low interest rates and competitive pricing in a more lucrative consumer segment).

**Figure 4 Municipal contribution to real GDP, 2000 - 2013**



Source: Quantec Research 2014 (MERO 2014)

In relation to the municipal percentage contribution to the Province's growth and size (MERO 2014), Matzikama accounts for 0.8 per cent of the total for the period 2000 – 2013. This places the economic challenges of the Municipality into context as well as the rural nature of activity which prevails. Linkages to the Saldanha Bay IDZ and surrounding economic roleplayers of Swartland will be vital in growing the economy and improving general levels of development.

**Table 5 Matzikama sectoral growth, 2000 - 2013**

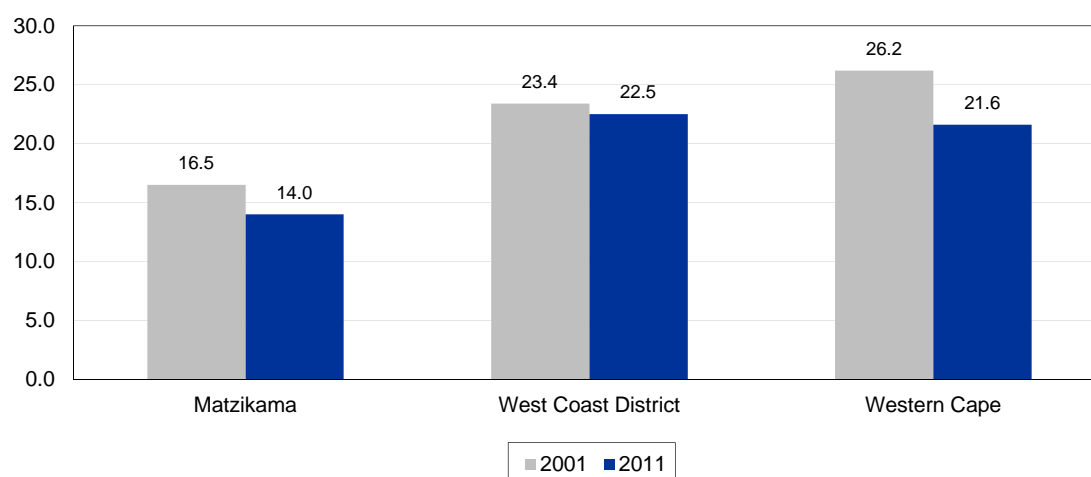
Regional area	Agricultural trend	Manufacturing trend	Services trend
	2000 - 2013	2000 - 2013	2000 - 2013
Matzikama	-0.3	0.6	3.3
Cederberg	-1	1	4.5
Bergrivier	-2.1	4	4.7
Saldanha Bay	3.4	-1.7	6.8
Swartland	0.3	2	5.2
Former West Coast DMA	3.8	21.5	7.6
<b>Total West Coast real GDP sector growth</b>	<b>-0.2</b>	<b>0.8</b>	<b>5.4</b>

Source: Quantec Research 2014 (MERO 2014)

The real GDP sector growth for broad sectors namely, Agriculture, Manufacturing and to a lesser extent Services has been static for the period 2000 – 2013 within the Matzikama Municipality, mirroring the District trends. Agriculture contracted by 0.3 per cent while Manufacturing represented by and large by Agro-processing grew by 0.6 per cent. Services which represent the highly skilled labour segment of the Municipality grew by 3.3 per cent.

## 5. Employment

The unemployment rate within the West Coast District gives a somewhat disjointed overview in 2011 when compared to the economic performance of the municipalities over the last decade or so. Cederberg Municipality (10.5 per cent) and Matzikama Municipality (14.0 per cent) record moderate unemployment statistics in light of their economic standing within the District. Swartland Municipality at 12.7 per cent is also relatively favourable but the major concern is that of Saldanha Bay at 23.4 per cent albeit with the second largest working age population of 44 829 persons.

**Figure 5 Unemployment rates, 2001 - 2011**

Source: Statistics South Africa Census 2001 and 2011

According to the MERO 2013 profile, the size of Matzikama's labour force is 27 695 people of which 23 806 is employed and 3 889 is unemployed. The unemployment rate was recorded as 14 per cent in 2011, which is 0.6 per cent lower than the District.

The Matzikama labour force constitutes 41.2 per cent of the population of the municipal area, of which 35.4 per cent is employed and 5.7 per cent are unemployed. In comparison to the District labour force, Matzikama's labour force represents 16.7 per cent of the West Coast District labour force.

**Table 6 Net employment, 2000 - 2013**

Regional area	Change in net employment (number)		
	Agricultural trend	Manufacturing trend	Services trend
	2000 - 2013	2000 - 2013	2000 - 2013
Matzikama	-3 260	-100	410
Cederberg	-3 910	-610	1 890
Bergrivier	-5 950	-490	2 000
Saldanha Bay	-2 190	-4 860	9 380
Swartland	-4 370	-1 680	2 000
Former West Coast DMA	-100	100	570
<b>Total West Coast</b>	<b>-19 800</b>	<b>-7 600</b>	<b>16 200</b>

Source: Quantec Research 2014 (MERO 2014)

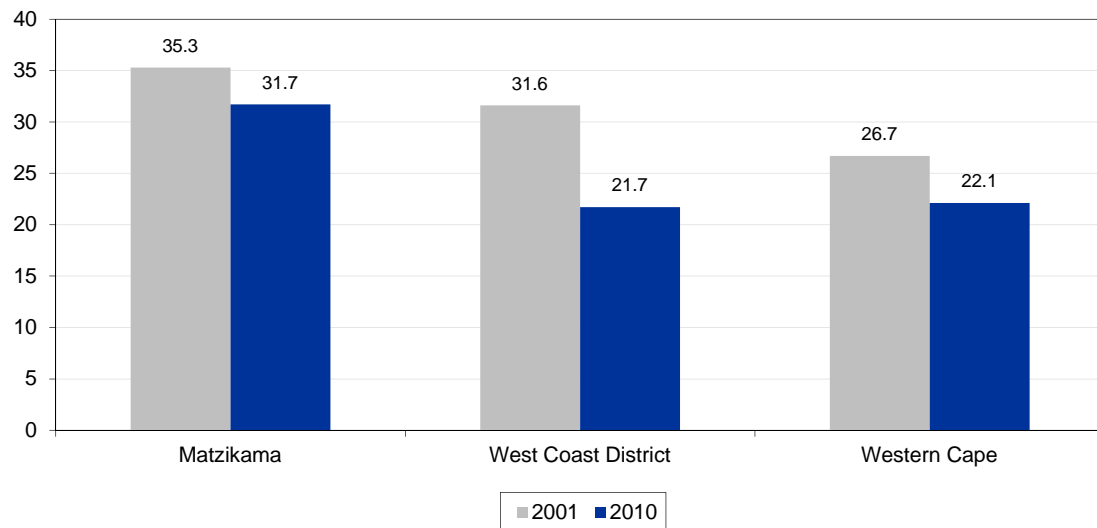
The Agriculture, forestry and fishing sector employed the most people (2 845) in 2011, followed by wholesale and retail trade, catering and accommodation (2 219), Manufacturing (1 240), Finance, insurance, real estate and business services (1 041). The Transport, storage and communication sector employed the least people (779) followed by Construction (843).

The biggest net job losses occurred in the in the Agriculture, forestry and fishing (3 260), and to a lesser extent Manufacturing (100) whilst the Services sectors created 410 jobs.

## 6. Poverty

The socio-economic index (SEP-LG 2013) gives a better reflection of the Socio-economic status within the West Coast District with Matzikama and Cederberg in need of added resources and assistance for this particular category, as is consistent with most of the SEP-LG 2013 profile. The economic drivers of the region have recorded positive indices with Saldanha Bay and Swartland featuring prominently.

**Figure 6 Percentage of households living in poverty, 2001 - 2010**



Source: IHS Global Insight, 2010

For the year 2010, rural based municipalities such as Cederberg (42.7 per cent), Bergrivier (33.8 per cent) and Matzikama (31.7 per cent) recorded alarming levels of poverty. This trend appears to be consistent for the entire assessed period. In comparison to the provincial and District Poverty Rates, Matzikama ranks lowly with Poverty Rates of 35.3 and 31.7 per cent recorded in 2001 and 2010 respectively.

**Table 7 Household income across municipalities in West Coast District, 2011**

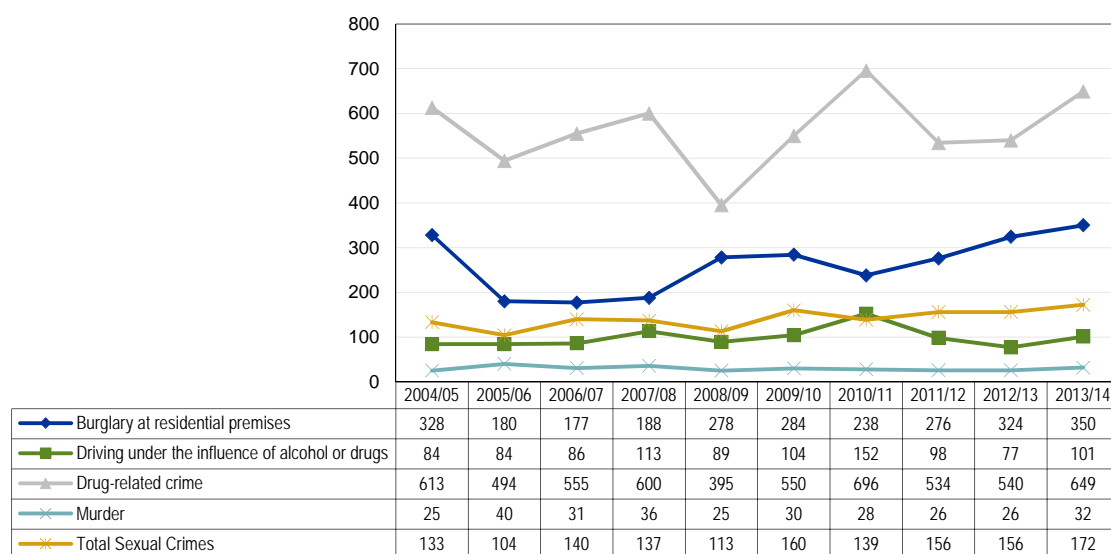
West Coast District	None income	R1 - R4 800	R4 801 - R9 600	R9 601 - R19 600	R19 601 - R38 200	R38 201 - R76 400	R76 401 - R153 800	R153 801 - R307 600	R307 601 - R614 400	R614 001 - R1 228 800	R1 228 801 - R2 457 600	R2 457 601+
Matzikama	8.2%	1.9%	3.3%	17.6%	24.7%	17.8%	11.8%	8.6%	4.4%	1.0%	0.4%	0.2%
Cederberg	9.5%	1.9%	3.2%	17.8%	25.4%	21.1%	10.6%	6.4%	3%	0.8%	0.3%	0.2%
Bergrivier	9.3%	1.4%	1.9%	13.5%	22.3%	22.4%	14%	9.1%	4.4%	0.8%	0.4%	0.4%
Saldanha Bay	13.9%	2.4%	4%	10.7%	17.4%	16.7%	15.2%	11.5%	6.1%	1.5%	0.4%	0.3%
Swartland	10.5%	1.7%	2.6%	13.4%	21.7%	20.1%	13%	9.5%	5.5%	1.5%	0.4%	0.2%

Source: Quantec Research, 2014

Household income within the Matzikama Municipality is concentrated around the R9 601 – R19 600 (17.6 per cent), R19 601 – R38 200 (24.7 per cent), and R38 201 – R76 400 (17.8 per cent) per annum income bands. This is consistent with the West Coast region's surrounding municipalities who are concentrated in similar income groups. However, the percentage of households vary significantly across municipalities with Saldanha Bay and Swartland leading the way in this area given the size of their dominant economies across the region.

## 7. Safety and security

**Figure 7 Crime in Matzikama Municipality, 2004/05 to 2013/14**



Source: South African Police Service, 2013/14

Drug-related crime is the dominant category for Matzikama currently standing at 649 cases for 2013/14 having peaked 696 cases in 2010/11. Burglaries are placed second with a gradual increase annually to the current figure of 350 cases in 2013/14. Given the rural nature of the economy and the associated socio-economic challenges that typify the Matzikama topography, the surge in drug-related crime is a worrying factor. Other crimes like driving under influence of alcohol/drugs, murder and sexual crimes all show an upward trend over past two years. The overall crime situation in Matzikama has thus worsened.

## 8. Access to basic services

The Access to Basic Services has showed little movement between 2011 – 2013. Water (96.4 per cent), Sanitation (70 per cent) and Energy (88.7 per cent) has remained relatively unchanged in 2013 while Refuse Removal (76.6 per cent) has improved notably from the 2011 level of 68 per cent. Housing has shown a marginal decline from the 2011 figure of 89.1 per cent to 88.9 per cent in 2013.

**Table 8 Access to basic services in the West Coast District**

Regional area	Water		Sanitation		Energy		Refuse Removal		Housing	
	2011	2013	2011	2013	2011	2013	2011	2013	2011	2013
West Coast District	98.4%	98.3%	87.4%	87.4%	94.5%	94.4%	76.5%	76.6%	88.5%	88.3%
Matzikama	96.4%	96.4%	70.1%	70.0%	88.8%	88.7%	68.0%	76.6%	89.1%	88.9%
Cederberg	97.8%	97.8%	82.6%	82.5%	89.3%	89.2%	58.2%	58.2%	88.2%	88.0%
Bergrivier	98.4%	98.4%	89.8%	89.8%	94.8%	94.7%	67.1%	58.2%	94.5%	94.5%
Saldanha Bay	99.2%	99.2%	96.2%	96.2%	97.1%	97.1%	96.5%	96.5%	82.1%	81.8%
Swartland	99.0%	99.0%	90.8%	90.7%	97.7%	97.7%	76.1%	76.1%	91.3%	91.2%

Source: Quantec Research, 2014



The Municipality's biggest strength lies in water and energy provision as levels of access is the highest. Nevertheless, there is still room for improvement in terms of refuse removal and sanitation at Matzikama Municipality. This is crucial to improve the quality of life of households in the municipal area.

## **9. Concluding remarks**

The developmental challenges facing the Matzikama Municipality are real and many. As per the above analysis, the following areas require immediate intervention and policy shifts to support the numbers recorded to date:

1. Education – the low literacy rates when compared to District averages.
2. Economic performance – the decline of the Agriculture and manufacturing sectors.
3. Employment – the dwindling labour force as a whole and the job losses associated with decline in Agriculture.
4. Poverty – The higher than average poverty rate when compared to District averages.
5. Basic Service Delivery – the extremely low figures recorded for Refuse removal.



Annexure A

Socio-economic snapshot

Regional area	Population size			Unemployment rate		Youth unemployment		GDP (2013)		Growth Potential of Towns Study: Infrastructure Index 2013	Average household Income 2011 Stats SA												
	2001	2011	Average annual growth (2000-2011)	2001	2011	2001	2011	GDP (R'000)	Real GDP growth (2000-2013)		None income	R1 - R4 800	R1 - R4 801 - R9 600	R19 600 - R38 200	R19 601 - R38 201	R38 201 - R76 400	R76 401 - R153 800	R153 801 - R307 600	R307 601 - R614 400	R614 401 - R1 228 801	R1 228 801 - R2 457 600	R2 457 601 - R4 915 201	
City of Cape Town	2 893 247	3 740 026	2.6%	29.2	23.9	36.8	31.9	185 662	49 647	4.1%	High	13.7%	2.7%	4%	10.6%	16%	14.5%	13%	11.9%	8.7%	3.6%	0.9%	0.5%
West Coast District	282 673	391 766	3.3%	13.2	14.6	17.3	18.2	11 382	28 173	3.3%	Low	8.2%	1.9%	3.3%	17.6%	24.7%	17.8%	11.8%	8.6%	4.4%	1.0%	0.4%	0.2%
Matzikama	50 207	67 147	2.9%	16.5	14.0	22.7	19.3	1 738	25 291	1.4%	Low	9.5%	1.9%	3.2%	17.8%	25.4%	21.1%	10.6%	6.4%	3%	0.8%	0.3%	0.2%
Cederberg	39 320	49 768	2.4%	10.2	10.5	13.3	13.8	1 013	19 858	2.2%	Medium	9.3%	1.4%	1.9%	13.5%	22.3%	22.4%	14%	9.1%	4.4%	0.8%	0.4%	0.4%
Bergvliet	46 330	61 897	2.9%	7.6	6.8	10.0	9.6	1 505	23 555	2.7%	High	13.9%	2.4%	4%	10.7%	17.4%	16.7%	15.2%	11.5%	6.1%	1.5%	0.4%	0.3%
Saldanha Bay	70 439	99 193	3.5%	21.5	23.4	26.8	30.4	3 655	35 382	4.4%	High	10.5%	1.7%	2.6%	13.4%	21.7%	20.1%	13%	9.5%	5.5%	1.5%	0.4%	0.2%
Swartland	72 118	113 762	4.7%	10.2	12.7	13.6	17.9	3 314	29 307	3.5%	High	10.5%	1.7%	2.6%	13.4%	21.7%	20.1%	13%	9.5%	5.5%	1.5%	0.4%	0.2%
Cape Winelands District	629 490	787 490	2.3%	17.0	14.2	22.2	17.1	30 160	37 252	3.9%	Low	6.4%	1.9%	4%	18.5%	25.8%	20.9%	10.4%	6.8%	3.9%	0.9%	0.3%	0.2%
Witzenberg	83 570	115 946	3.3%	13.6	7.6	17.3	9.9	2 616	21 787	3.0%	Low	13%	1.7%	3.1%	10.7%	17.2%	18.4%	13.9%	11%	7.4%	2.5%	0.7%	0.4%
Drakenstein	194 416	251 262	2.6%	22.8	17.6	29.5	24.6	9 405	36 535	2.9%	Medium	20.6%	2.1%	3.5%	10.2%	16.5%	15.5%	11.5%	8.5%	6.6%	3.3%	1%	0.7%
Stellenbosch	117 715	155 733	2.8%	16.9	15.2	23.1	21.5	10 117	5 111	5.1%	High	12%	1.7%	2.9%	14.9%	22.2%	19%	12.6%	8.5%	4.7%	1%	0.3%	0.2%
Breda Valley	146 034	166 825	1.3%	19.7	14.4	25.0	14.4	4 419	25 923	2.3%	Medium	9.7%	2.3%	4.4%	15.5%	24.9%	20%	11%	7.3%	3.6%	0.8%	0.2%	0.2%
Langeberg	81 274	97 724	1.9%	12.2	11.3	16.0	15.1	3 446	34 592	4.6%	Medium	11.8%	1.8%	3.4%	17.7%	22.9%	19.1%	11.4%	7%	3.6%	0.9%	0.2%	0.2%
Overberg District	203 520	258 176	2.4%	17.5	17.0	22.4	21.4	8 083	30 403	5.2%	Medium	11.8%	1.8%	3.4%	17.7%	22.9%	19.1%	11.4%	7%	3.6%	0.9%	0.2%	0.2%
Theewaterskloof	93 276	108 790	1.6%	18.6	14.9	18.6	19.8	2 873	25 692	3.6%	High	16.4%	2.9%	4.1%	12%	17.4%	15.6%	13.7%	10.3%	5.2%	1.7%	0.4%	0.3%
Overstrand	55 735	80 432	3.7%	22.0	23.3	29.3	31.1	2 766	33 082	6.3%	High	9.6%	1.3%	2.5%	12.7%	22.8%	19.9%	14.2%	10.6%	4.7%	1.2%	0.3%	0.2%
Cape Agulhas	26 183	33 038	2.4%	13.6	13.8	19.5	19.5	1 400	41 536	5.3%	High	7.9%	1.3%	3.1%	14.3%	25.3%	20.5%	13.4%	8.2%	4.4%	0.9%	0.3%	0.3%
Swellendam	28 077	35 916	2.5%	15.7	11.4	22.1	15.0	1 021	27 785	4.6%	Medium	8%	2.4%	4.7%	20.1%	28.1%	18.6%	9.3%	5.8%	2.1%	0.5%	0.2%	0.2%
Eden District	454 919	574 265	2.4%	23.4	22.5	31.2	29.3	20 362	34 655	5.2%	Low	7.9%	1.7%	3%	14.1%	22.5%	22.5%	14.3%	9%	3.6%	0.9%	0.3%	0.3%
Kannaland	23 975	24 767	0.3%	13.9	17.3	19.6	22.7	716	28 703	5.1%	High	17.4%	2.8%	4.1%	12.5%	16%	15.4%	13.2%	10.5%	5.5%	1.7%	0.5%	0.4%
Hessesqua	44 108	52 642	1.8%	14.0	14.1	19.8	18.5	1 057	19 749	1.3%	High	12.1%	2.6%	4.4%	13.2%	19.4%	17.3%	12.7%	9.8%	6%	1.7%	0.5%	0.3%
Mossel Bay	71 498	89 430	2.3%	24.7	22.9	32.5	29.9	5 651	61 186	7.5%	High	9%	2.3%	4.5%	16.3%	23.7%	18.9%	11.5%	8.4%	4.2%	0.8%	0.3%	0.2%
George	135 402	193 672	3.6%	27.8	20.7	34.5	27.6	6 149	30 889	4.0%	Medium	18.1%	4.4%	5.5%	16.4%	19.7%	13.8%	9%	6.7%	4%	1.5%	0.5%	0.4%
Oudtshoorn	84 691	95 933	1.3%	33.7	25.3	43.4	35.9	2 297	23 940	3.5%	Low	16.4%	4.4%	5.5%	16.4%	19.7%	13.8%	9%	6.7%	4%	1.5%	0.5%	0.4%
Bloubaai	29 180	49 162	5.4%	26.3	30.1	33.4	37.9	1 662	32 411	7.7%	Medium	16.4%	3.3%	4.3%	13.8%	18.8%	15%	11.1%	8.8%	5.6%	1.9%	0.6%	0.4%
Knysna	51 475	68 659	2.9%	28.3	24.8	35.1	32.3	2 507	35 593	5.6%	Medium	5.3%	2%	2.9%	20.9%	25.4%	21.8%	11%	6.6%	2.9%	0.7%	0.5%	0%
Central Karoo District	60 482	71 011	1.6%	33.2	22.7	43.7	27.3	1 586	21 917	4.0%	Low	6.3%	3.3%	6.1%	19.6%	26.7%	17.1%	9.4%	6.5%	3.6%	0.6%	0.3%	0.3%
Langsburg	6 679	8 289	2.2%	26.3	17.9	37.0	22.0	145	17 364	2.3%	Low	9.5%	3.3%	5.8%	21.7%	23.8%	15.3%	9.5%	6.9%	3.2%	0.7%	0.2%	0.2%
Prince Albert	10 518	13 136	2.2%	35.0	19.4	44.5	25.4	225	16 786	4.0%	Low	9.5%	3.3%	5.8%	21.7%	23.8%	15.3%	9.5%	6.9%	3.2%	0.7%	0.2%	0.2%
Beaufort West	37 110	49 586	2.9%	38.2	25.5	49.7	34.5	1 087	21 485	3.8%	Medium	9.5%	3.3%	5.8%	21.7%	23.8%	15.3%	9.5%	6.9%	3.2%	0.7%	0.2%	0.2%

Regional area	Literacy rate		Poverty rate		Human Development Index		Gini coefficient		ART patient load			Population <1 year fully immunised			
	2001	2011	2001	2010	2001	2011	2012	2001	2011	2012	2013	2014	2012	2013	2014
<b>City of Cape Town</b>	85.0%	90.5%	23.9%	19.7%	0.71	0.74	0.74	0.60	0.59	85 791	99 233	116 421	87.5%	89.5%	76.6%
<b>West Coast District</b>	71.0%	79.1%	32.0%	30.4%	0.63	0.67	0.67	0.59	0.58	3 547	4 561	5 553	97.1%	96.3%	96.7%
Matielkama	69.0%	76.4%	35.3%	31.7%	0.62	0.67	0.67	0.60	0.59	462	569	812	103.2%	105.4%	90.2%
Cederberg	66.0%	73.2%	41.2%	42.7%	0.59	0.64	0.65	0.62	0.61	666	880	1 063	91.0%	93.5%	101.1%
Bergvliet	70.0%	76.4%	34.2%	33.8%	0.61	0.66	0.66	0.56	0.58	343	466	601	93.1%	97.9%	93.7%
Saldanha Bay	79.0%	86.7%	22.3%	23.9%	0.67	0.71	0.71	0.57	0.55	1 127	1 435	1 779	85.1%	88.4%	95.4%
Swartland	69.0%	78.0%	32.8%	26.8%	0.62	0.66	0.66	0.58	0.59	929	1 211	1 298	118.2%	104.2%	102.9%
<b>Cape Winelands District</b>	72.0%	81.7%	30.9%	25.7%	0.63	0.69	0.68	0.60	0.58	11 830	14 170	17 463	90.0%	91.8%	100.2%
Witzenberg	65.0%	75.5%	29.8%	27.4%	0.58	0.65	0.65	0.59	0.59	1 678	2 008	2 786	73.2%	79.1%	66.7%
Drakenstein	77.0%	84.8%	27.2%	20.7%	0.65	0.70	0.70	0.59	0.56	4 103	4 627	5 276	99.8%	170.9%	105.5%
Stellenbosch	80.0%	84.9%	34.6%	25.8%	0.66	0.71	0.71	0.62	0.60	2 360	2 940	3 574	95.0%	94.0%	93.3%
Brede Valley	71.0%	82.1%	31.5%	27.0%	0.62	0.68	0.68	0.59	0.58	2 697	3 358	4 248	137.5%	100.6%	109.3%
Langeberg	62.0%	75.3%	34.1%	32.0%	0.58	0.66	0.66	0.58	0.57	992	1 237	1 579	49.7%	40.8%	63.4%
<b>Overberg District</b>	73.0%	81.1%	31.0%	29.6%	0.63	0.69	0.69	0.58	0.58	4 253	4 907	6 182	74.4%	75.8%	81.6%
Theewaterskloof	68.0%	78.4%	35.3%	35.0%	0.59	0.66	0.66	0.58	0.58	1 802	2 150	2 757	72.9%	82.7%	79.9%
Overstrand	81.0%	87.5%	25.6%	25.5%	0.70	0.73	0.73	0.56	0.58	1 614	2 034	2 506	75.5%	78.5%	80.3%
Cape Agulhas	76.0%	81.1%	25.1%	19.1%	0.67	0.70	0.70	0.56	0.57	228	299	372	76.8%	77.5%	85.3%
Swellendam	65.0%	74.2%	33.6%	30.7%	0.61	0.67	0.68	0.60	0.58	582	424	547	74.9%	74.4%	78.2%
<b>Eden District</b>	74.0%	82.6%	31.6%	21.7%	0.64	0.71	0.71	0.59	0.57	9 397	10 402	12 788	88.6%	102.8%	86.3%
Kannaland	60.0%	72.5%	43.8%	29.9%	0.56	0.66	0.65	0.59	0.57	32	100	273	70.1%	68.4%	74.3%
Hessesqua	70.0%	78.5%	28.9%	16.0%	0.63	0.70	0.70	0.56	0.54	235	364	482	85.4%	85.1%	86.4%
Mossel Bay	79.0%	85.7%	27.3%	12.4%	0.68	0.75	0.74	0.58	0.55	1 758	2 117	2 490	85.7%	88.9%	77.0%
George	76.0%	83.4%	26.2%	20.4%	0.66	0.71	0.71	0.58	0.56	3 377	3 886	4 534	89.2%	91.9%	87.6%
Oudtshoorn	71.0%	79.4%	43.8%	34.1%	0.59	0.66	0.66	0.59	0.57	867	740	1 109	86.6%	79.5%	90.3%
Blou	76.0%	85.8%	33.5%	27.2%	0.65	0.71	0.71	0.61	0.63	1 383	1 578	1 640	84.7%	85.5%	78.5%
Knysna	78.0%	85.1%	24.2%	15.0%	0.68	0.73	0.73	0.58	0.57	1 729	1 617	2 260	111.0%	116.4%	102.5%
<b>Central Karoo District</b>	63.0%	73.4%	38.7%	32.5%	0.57	0.65	0.65	0.59	0.57	715	949	1 174	80.3%	77.0%	79.2%
Laingsburg	58.0%	70.0%	37.6%	36.1%	0.56	0.65	0.64	0.59	0.57	62	78	119	94.7%	75.0%	89.4%
Prince Albert	59.0%	69.9%	44.1%	43.3%	0.55	0.63	0.63	0.61	0.57	61	131	151	53.0%	94.1%	82.4%
Beaufort West	68.0%	74.9%	37.5%	29.1%	0.58	0.65	0.65	0.59	0.56	592	740	904	89.0%	77.0%	77.2%

## Annexure B

## Access to basic services in municipalities across the Western Cape

Regional area	Percentage of Household with Minimal Service Level - Census 2001 - 2011									
	Water 2001	Water 2011	Sanitation 2001	Sanitation 2011	Energy 2001	Energy 2011	Refuse 2001	Refuse 2011	Housing 2001	Housing 2011
<b>City of Cape Town</b>	98.7%	99.3%	87.3%	91.1%	88.8%	94.2%	93.0%	94.0%	83.0%	89.5%
<b>West Coast District</b>	98.0%	99.2%	85.8%	92.0%	81.4%	94.8%	68.0%	76.0%	93.0%	93.0%
Matzikama	92.0%	96.0%	77.9%	83.6%	97.8%	98.7%	59.0%	68.0%	89.9%	88.4%
Cederberg	96.0%	98.0%	82.7%	89.1%	98.4%	96.4%	50.0%	58.0%	93.3%	87.1%
Bergrivier	94.0%	99.0%	88.4%	92.7%	98.8%	98.8%	57.0%	67.0%	93.4%	93.4%
Saldanha Bay	95.0%	99.0%	96.3%	97.1%	95.0%	99.3%	94.0%	97.0%	84.5%	81.7%
Swartland	93.0%	99.0%	85.7%	93.0%	96.8%	99.5%	70.0%	76.0%	93.4%	90.9%
<b>Cape Winelands District</b>	98.0%	99.2%	86.5%	93.2%	88.5%	93.2%	70.0%	80.0%	82.7%	91.2%
Witzenberg	94.9%	98.6%	86.3%	94.5%	95.7%	97.5%	58.0%	71.0%	89.0%	86.2%
Drakenstein	92.0%	99.0%	91.1%	95.1%	92.0%	97.3%	76.0%	86.0%	82.0%	85.0%
Stellenbosch	90.3%	94.9%	90.7%	94.0%	95.9%	95.3%	80.0%	97.0%	81.4%	75.1%
Breede Valley	93.4%	96.5%	87.6%	91.2%	95.1%	92.5%	66.0%	76.0%	87.2%	77.9%
Langeberg	92.8%	96.5%	83.5%	93.3%	97.7%	98.5%	62.0%	73.0%	92.9%	90.7%
<b>Overberg District</b>	98.8%	99.2%	84.7%	92.0%	83.9%	91.5%	77.0%	83.0%	87.9%	91.3%
Theewaterskloof	90.0%	96.9%	80.2%	87.4%	90.6%	92.8%	70.0%	79.0%	77.8%	80.3%
Overstrand	95.1%	98.6%	89.5%	96.5%	92.8%	94.8%	88.0%	92.0%	83.6%	80.1%
Cape Agulhas	97.3%	97.4%	86.9%	91.9%	99.1%	99.1%	79.0%	80.0%	91.3%	85.2%
Swellendam	93.2%	96.2%	83.2%	90.6%	99.0%	99.1%	71.0%	74.0%	88.4%	88.3%
<b>Eden District</b>	95.7%	97.8%	80.7%	87.1%	85.6%	91.4%	81.0%	86.0%	77.9%	91.1%
Kannaland	92.0%	94.0%	64.0%	78.0%	93.3%	98.1%	58.0%	66.0%	96.9%	96.3%
Hessequa	96.0%	98.0%	83.0%	92.0%	88.9%	98.4%	71.0%	79.0%	93.2%	93.8%
Mossel Bay	96.0%	96.0%	91.0%	93.0%	87.3%	97.0%	89.0%	93.0%	85.5%	85.9%
George	92.0%	96.0%	84.0%	89.0%	87.3%	94.1%	85.0%	88.0%	80.9%	83.9%
Oudtshoorn	93.0%	95.0%	82.0%	82.0%	87.6%	96.9%	81.0%	78.0%	87.0%	88.5%
Bitou	90.0%	93.0%	81.0%	84.0%	86.9%	90.6%	85.0%	88.0%	79.8%	72.2%
Knysna	84.0%	94.0%	83.0%	83.0%	81.0%	88.3%	85.0%	93.0%	68.6%	73.8%
<b>Central Karoo District</b>	98.9%	99.4%	85.5%	90.0%	83.9%	89.7%	77.7%	78.7%	96.9%	96.7%
Laingsburg	98.2%	99.4%	74.4%	83.3%	73.4%	83.3%	63.1%	59.5%	96.6%	96.6%
Prince Albert	98.0%	99.3%	79.0%	84.5%	80.0%	90.1%	71.6%	73.4%	94.2%	93.9%
Beaufort West	99.0%	99.4%	90.0%	92.8%	87.2%	93.4%	85.4%	83.7%	95.8%	97.9%
Western Cape	85.2%	88.4%	86.5%	90.5%	78.8%	86.9%	88.8%	91.1%	81.3%	80.4%
South Africa	61%	73.4%	53.8%	62.6%	51.4%	73.9%	57.0%	63.6%	68.5%	77.6%

