



Western Cape Government • Wes-Kaapse Regering • URhulumente weNtshona Koloni

PROVINCE OF THE WESTERN CAPE

PROVINSIE WES-KAAP

IPHONDO LENTSHONA KOLONI

Provincial Gazette Extraordinary

8420

Friday, 30 April, 2021

Buitengewone Provinsiale Koerant

8420

Vrydag, 30 April 2021

Isongezelelo kwiGazethi yePhondo

8420

uLwesihlanu, 30 kuTshazimpuzi 2021

Registered at the Post Office as a Newspaper

CONTENTS

(*Reprints are obtainable at Room M21, Provincial Legislature Building, 7 Wale Street, Cape Town 8001.)

Provincial Notice

The following Provincial Notice is published for general information:

- 39 Department of Environmental Affairs and Development Planning: National Environmental Management: Protected Areas Act, 2003 (Act 57 of 2003): Declaration of Sunshine Nature Reserve..... 2
- 40 Department of Environmental Affairs and Development Planning: National Environmental Management: Protected Areas Act, 2003 (Act 57 of 2003): Declaration of Viljoensdrift Nature Reserve 11

As 'n Nuusblad by die Poskantoor Geregistreer

INHOUD

(*Afskrifte is verkrygbaar by Kamer M21, Provinsiale Wetgewer-gebou, Waalstraat 7, Kaapstad 8001.)

Provinsiale Kennisgewing

Die volgende Provinsiale Kennisgewing word vir algemene inligting gepubliseer:

- 39 Departement van Omgewingsake en Ontwikkelingsbeplanning: "National Environmental Management: Protected Areas Act, 2003" (Wet 57 van 2003): Verklaring van Sunshine Natuurreservaat 5
- 40 Departement van Omgewingsake en Ontwikkelingsbeplanning: "National Environmental Management: Protected Areas Act, 2003" (Wet 57 van 2003): Verklaring van Viljoensdrift Natuurreservaat 13

Ibhaliswe ePosini njengePhephandaba

IZIQUATHO

(*Ushicilelo oLutsha lufumaneka kwigumbi M21, kwiSakhiwo sePhondo seNdlu yoWiso-Mthetho, 7 Wale Street, eKapa 8001.)

ISaziso sePhondo

Esi saziso silandelayo sipapashelwe ukunika ulwazi ngokubanzi:

- 39 ISebe leMicimbi yoKusingqongileyo noCwangciso loPhuhliso: UkuLondolozwa kweNdalo yeSizwe: UMthetho weeNdawo zoLondolozo eziKhuselweyo, 2003 (Umthetho 57 ka-2003): IsiBhengezo seNdawo yoLondolozo lweNdalo yaseSunshine 8
- 40 ISebe leMicimbi yoKusingqongileyo noCwangciso loPhuhliso: KuMthetho woKulondolozwa kweNdalo yeSizwe: UMthetho weeNdawo zoLondolozo eziKhuselweyo, 2003 (Umthetho wama-57 ka-2003): IsiBhengezo seNdawo yoloNdolozo lweNdalo yase-Viljoensdrift 15

PROVINCIAL NOTICE

The following Provincial Notice is published for general information.

DR H.C. MALILA,
DIRECTOR-GENERAL

Provincial Legislature Building,
Wale Street,
Cape Town.

PROVINSIALE KENNISGEWING

Die volgende Provinsiale Kennisgewing word vir algemene inligting gepubliseer.

DR H.C. MALILA,
DIREKTEUR-GENERAAL

Provinsiale Wetgewer-gebou,
Waalstraat,
Kaapstad.

ISAZISO SEPHONDO

Esi saziso silandelayo sipapashelwe ukunika ulwazi ngokubanzi.

GQIR H.C. MALILA,
MLAWULI-JIKELELE

ISakhiwo sePhondo,
Wale Street,
eKapa.

PROVINCIAL NOTICE

P.N. 39/2021

30 April 2021

**DEPARTMENT OF ENVIRONMENTAL AFFAIRS AND DEVELOPMENT
PLANNING**

**NATIONAL ENVIRONMENTAL MANAGEMENT: PROTECTED AREAS ACT, 2003
(ACT 57 OF 2003)**

DECLARATION OF SUNSHINE NATURE RESERVE

I, Anton Wilhelm Bredell, Provincial Minister of Local Government, Environmental Affairs and Development Planning in the Western Cape, under section 23(1)(a)(i) of the National Environmental Management: Protected Areas Act, 2003 (Act 57 of 2003), declare a nature reserve on:

1. Remainder of Portion 3 of the Farm Uitnood No. 129 Robertson, situated in the Langeberg Municipality, Division of Robertson, Western Cape Province;
In extent: 796, 4642 (Seven Hundred and Ninety-Six comma Four Six Four Two hectares);
Held by Deed of Transfer No. T33834/1980;
2. Remainder of the Farm Annex Goedemoed No. 127 Robertson, situated in the Langeberg Municipality, Division of Robertson, Western Cape Province;
In extent: 592, 4832 (Five Hundred and Ninety-Two comma Four Eight Three Two) hectares;
Held by Deed of Transfer No. T33834/1980;
3. Remainder of the Farm Goedemoed No. 128 Robertson, situated in the Langeberg Municipality, Division of Robertson, Western Cape Province;
In extent: 421, 6808 (Four Hundred and Twenty-One comma Six Eight Zero Eight) hectares;
Held by Deed of Transfer No. T33834/1980;
4. Portion 28 (Riverside) (a portion of Portion 21) of the Farm Goedemoed No. 128 Robertson, situated in the Langeberg Municipality, Division of Robertson, Western Cape Province;
In extent: 59, 7231 (Fifty-Nine comma Seven Two Three One) hectares;
Held by Deed of Transfer No. T33834/1980;

5. Portion 1 of the Farm Annex Goedemoed No.127 Robertson, situated in the Langeberg Municipality, Division of Robertson, Western Cape Province;
In extent: 364, 0832 (Three Hundred and Sixty-Four comma Zero Eight Three Two) hectares;
Held by Deed of Transfer No. T69811/1993;
6. Portion 94 (a portion of Portion 8) of the Farm Goedemoed No.128 Robertson, situated in the Langeberg Municipality, Division of Robertson, Western Cape Province;
In extent: 141, 5820 (One Hundred and Forty-One comma Five Eight Two Zero) hectares;
Held by Deed of Transfer No. T69811/1993; and
7. Remainder of Portion 8 of the Farm Goedemoed No. 128 Robertson, situated in the Langeberg Municipality, Division of Robertson, Western Cape Province;
In extent: 162, 1185 (One Hundred and Sixty-Two comma One One Eight Five) hectares;
Held by Deed of Transfer No. T24416/1996.

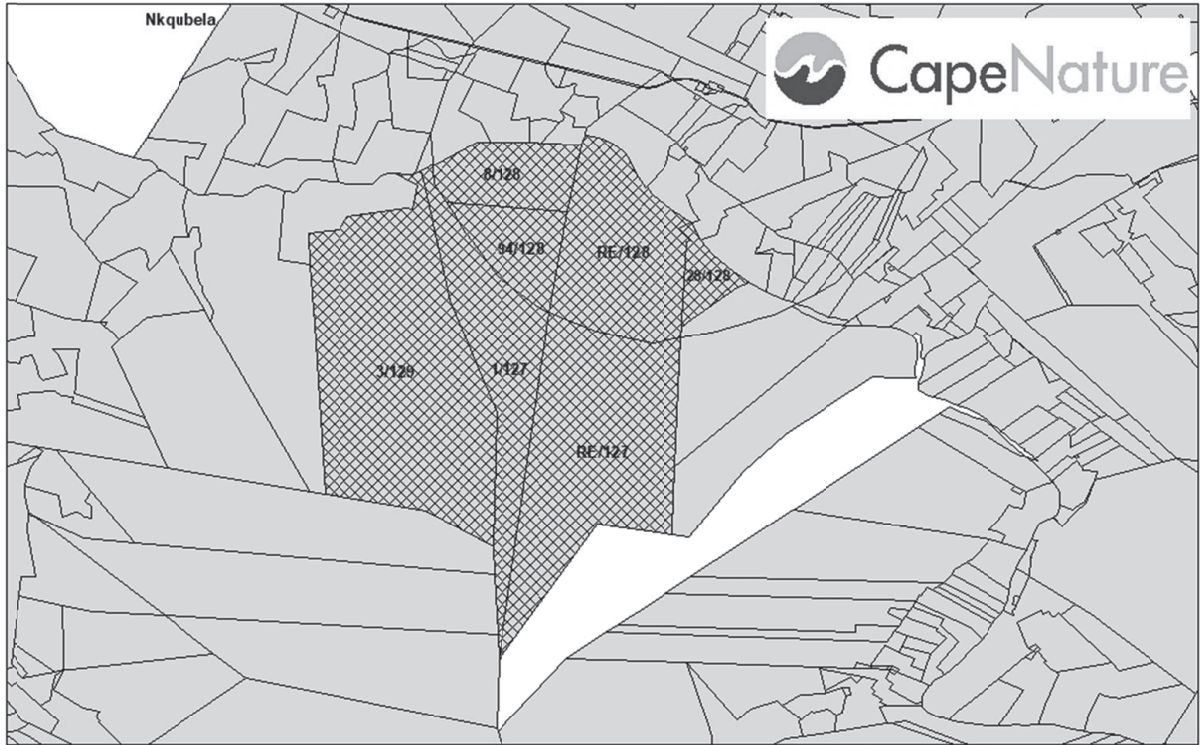
I assign the name “Sunshine Nature Reserve” to the reserve, of which the boundaries are reflected on the map and Surveyor-General Diagrams No. 2878/2019 as set out in the Schedule.

Signed at Cape Town this 17th day of March 2021.

AW BREDELL
PROVINCIAL MINISTER OF LOCAL GOVERNMENT, ENVIRONMENTAL AFFAIRS
AND DEVELOPMENT PLANNING

SCHEDULE

SUNSHINE NATURE RESERVE

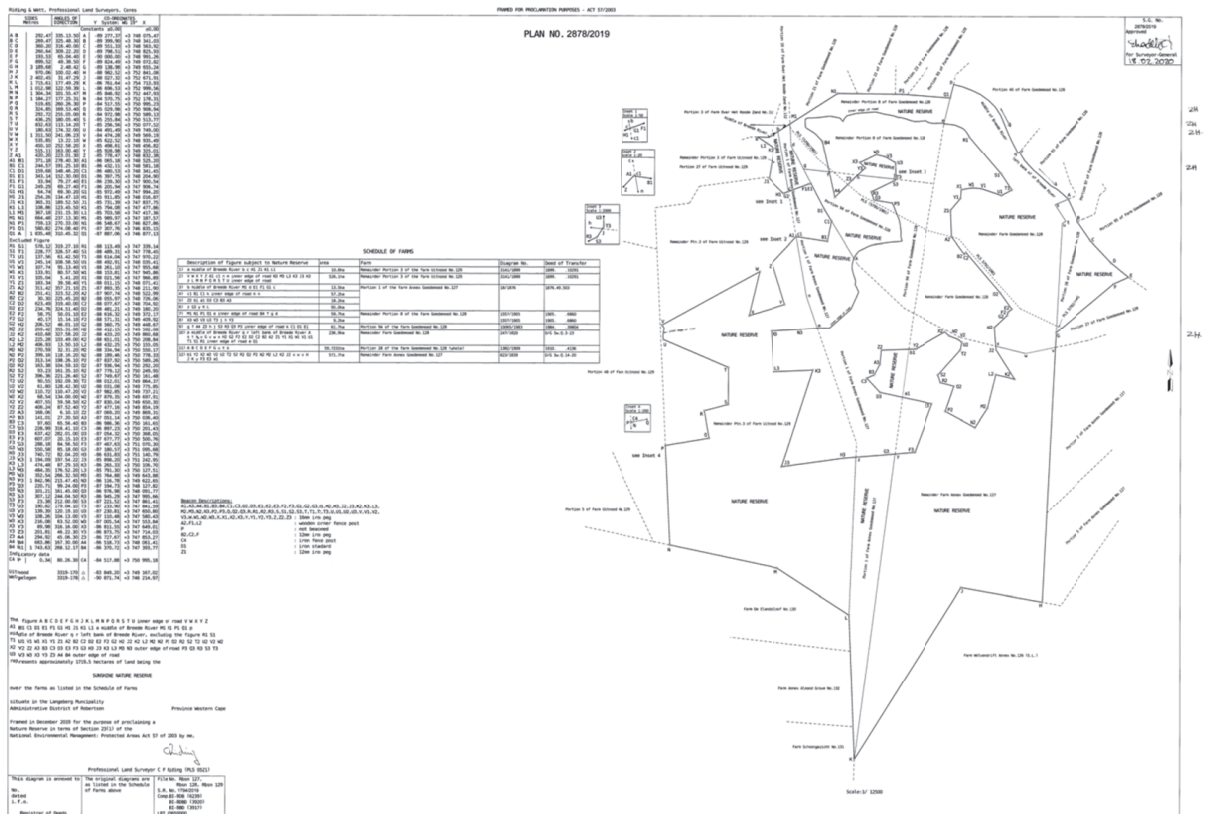


Sunshine Nature Reserve
 Farm/Erven Boundary



Map Information:
WGS84, UTM ZONE 35S

Date: 13 January 2020
Compiler: E. Voges



PROVINSIALE KENNISGEWING

P.K. 39/2021

30 April 2021

DEPARTEMENT VAN OMGEWINGSAKE EN ONTWIKKELINGSBEPLANNING**“NATIONAL ENVIRONMENTAL MANAGEMENT: PROTECTED AREAS ACT, 2003”
(WET 57 VAN 2003)****VERKLARING VAN SUNSHINE NATUURRESERVAAT**

Ek, Anton Wilhelm Bredell, Provinsiale Minister van Plaaslike Regering, Omgewingsake en Ontwikkelingsbeplanning in die Wes-Kaap, kragtens artikel 23(1)(a)(i) van die “National Environmental Management: Protected Areas Act, 2003” (Wet 57 van 2003), verklaar ’n natuurresewaat op:

1. Restant van Gedeelte 3 van die Plaas Uitnood Nr. 129 Robertson, geleë in die Langeberg Munisipaliteit, Afdeling van Robertson, Provinsie Wes-Kaap;
Groot: 796, 4642 (Sewe Honderd Ses-en-Neëntig komma Vier Ses Vier Twee hektaar;
Gehou kragtens Transportakte Nr. T33834/1980;
2. Restant van die Plaas Annex Goedemoed Nr. 127 Robertson, geleë in die Langeberg Munisipaliteit, Afdeling van Robertson, Provinsie Wes-Kaap;
Groot: 592, 4832 (Vyf Honderd Twee-en-Neëntig komma Vier Ag Drie Twee) hektaar;
Gehou kragtens Transportakte Nr. T33834/1980;
3. Restant van die Plaas Goedemoed Nr. 128 Robertson, geleë in die Langeberg Munisipaliteit, Afdeling van Robertson, Provinsie Wes-Kaap;
Groot: 421, 6808 (Vier Honderd Een-en-Twintig komma Ses Ag Nul Ag) hektaar;
Gehou kragtens Transportakte Nr. T33834/1980;
4. Gedeelte 28 (Riverside) (’n gedeelte van Gedeelte 21) van die Plaas Goedemoed Nr. 128 Robertson, geleë in die Langeberg Munisipaliteit, Afdeling van Robertson, Provinsie Wes-Kaap;
Groot: 59, 7231 (Nege-en-Vyftig komma Sewe Twee Drie Een) hektaar;
Gehou kragtens Transportakte Nr. T33834/1980;
5. Gedeelte 1 van die Plaas Annex Goedemoed Nr. 127 Robertson, geleë in die Langeberg Munisipaliteit, Afdeling van Robertson, Provinsie Wes-Kaap;
Groot: 364, 0832 (Drie Honderd Vier-en-Sestig komma Nul Ag Drie Twee) hektaar;
Gehou kragtens Transportakte Nr. T69811/1993;

6. Gedeelte 94 (’n gedeelte van Deel 8) van die Plaas Goedemoed Nr. 128 Robertson, geleë in die Langeberg Munisipaliteit, Afdeling van Robertson, Provinsie Wes-Kaap;
Groot: 141, 5820 (Een Honderd Een-en-Veertig komma Vyf Ag Twee Nul) hektaar;
Gehou kragtens Transportakte Nr. T69811/1993; en
7. Restant van Gedeelte 8 van die Plaas Goedemoed Nr. 128 Robertson, geleë in die Langeberg Munisipaliteit, Afdeling van Robertson, Provinsie Wes-Kaap;
Groot: 162, 1185 (Een Honderd Twee-en-Sestig komma Een Een Ag Vyf) hektaar;
Gehou kragtens Transportakte Nr. T24416/1996.

Ek ken die naam “Sunshine Natuureservaat” toe aan die reservaat, waarvan die grense op die kaart en die Landmeter-generaal diagram Nr. 2878/2019 weergegee word, soos uiteengesit in die Bylae.

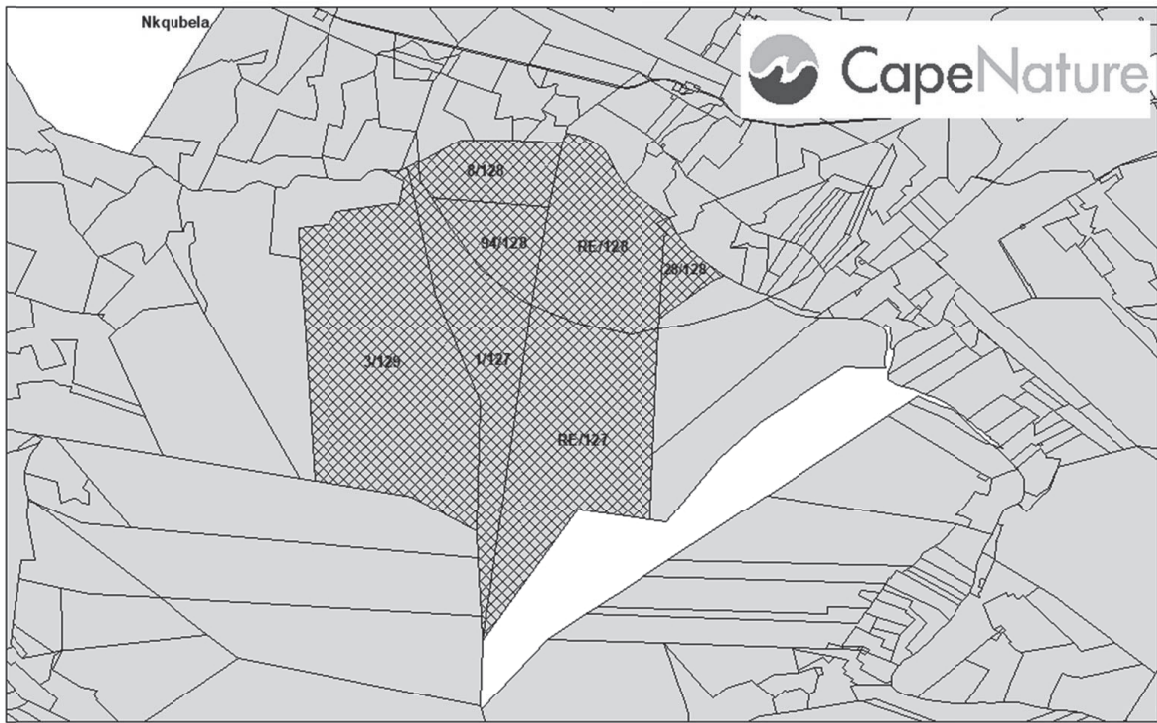
Geteken te Kaapstad op hierdie 17de dag van Maart 2021.

AW BREDELL

**PROVINSIALE MINISTER VAN PLAASLIKE REGERING, OMGEWINGSAKE
EN ONTWIKKELINGSBEPLANNING**

BYLAE

SUNSHINE NATUURRESERVAAT

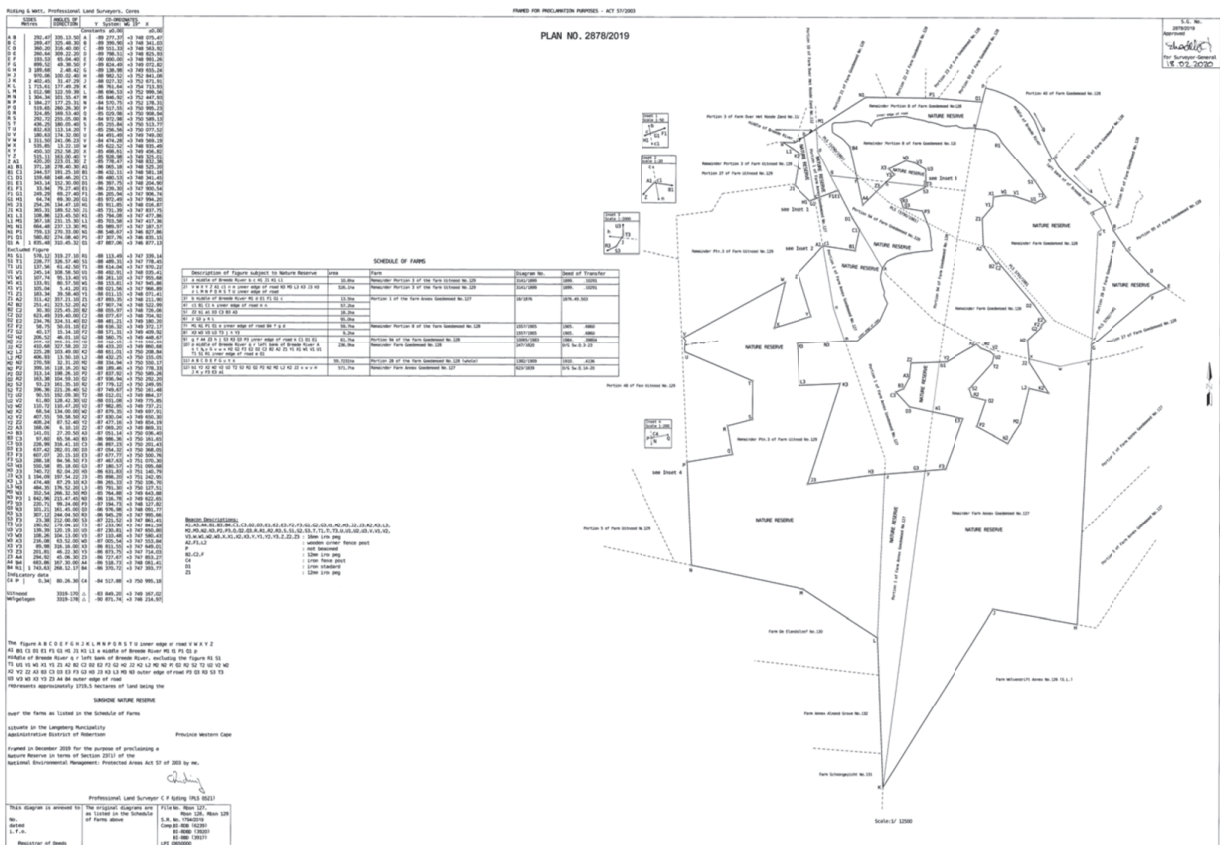


Sunshine Nature Reserve
Farm/Erven Boundary



Map Information:
WGS84, UTM ZONE 35S

Date: 13 January 2020
Complier: E. Voges



ISAZISO SEPHONDO

I.S. 39/2021

30 kuTshazimpuzi 2021

ISEBE LEMICIMBI YOKUSINGQONGILEYO NOCWANGCISO LOPHUHLISO**UKULONDOLOZWA KWENDALO YESIZWE: UMTHETHO WEENDAWO
ZOLONDOLOZO EZIKHUSELWEYO, 2003 (UMTHETHO 57 KA-2003):****ISIBHENGEZO SENDAWO YOLONDOLOZO LWENDALO YASESUNSHINE**

Mna, Anton Wilhelm Bredell, uMphathiswa wePhondo woRhulumente weNgingqi, iMicimbi yokuSingqongileyo noCwangciso loPhuhliso eNtshona Koloni, ngaphantsi kwecandelo 23(1)(a)(i) lokuLondolozwa kweNdalo yeSizwe: UMthetho weeNdawo zoLondolozo eziKhuselweyo, ka-2003 (uMthetho 57 ka-2003), ndibhengeza indawo yolondolozo lwendalo ekwi:

1. ndawo eseleyo yeNxenye yesi-3 yeFama iUitnood enguNombolo 129 Robertson, ekuMasipala waseLangeberg, iCandelo laseRobertson, kwiPhondo laseNtshona Koloni;
Ubungakanani: 796, 4642 (Iihektare Ezingamawaka Angamakhulu Asixhenxe Namashumi Alithoba Anesithandathu ikhoma Isine Isithandathu Isine Isibini;
Ephantsi kweSiqinisekiso soNikezelo loMhlaba esinguNombolo T33834/1980
2. ndawo eseleyo kwiFama i-Annex Goedemoed enguNombolo 127 Robertson, ekuMasipala waseLangeberg, iCandelo laseRobertson, kwiPhondo laseNtshona Koloni;
Ubungakanani: 592, 4832 (Amawaka Angamakhulu Amahlanu Namashumi Alithoba Anesibini ikhoma Isine Isibhozo Isithathu Isibini) eehektare;
Ephantsi kweSiqinisekiso soNikezelo loMhlaba esinguNombolo T33834/1980
3. ndawo eseleyo kwiFama iGoedemoed enguNombolo 128 Robertson, ekuMasipala waseLangeberg, iCandelo laseRobertson, kwiPhondo laseNtshona Koloni;
Ubungakanani: 421, 6808 (Amakhulu Amane Namashumi Amabini Ananye ikhoma Isithandathu Isibhozo Iqanda Isibhozo) eehektare;
Ephantsi kweSiqinisekiso soNikezelo loMhlaba esinguNombolo T33834/1980
4. nxenye 28 (Riverside) (inxenye yeNxenye 21) yeFama iGoedemoed enguNombolo 128 Robertson, ekuMasipala waseLangeberg, iCandelo laseRobertson, kwiPhondo laseNtshona Koloni;
Ubungakanani: 59,7231 (Amashumi Amahlanu Anethoba ikhoma Isixhenxe Isibini Isithathu Isinye) eehektare;
Ephantsi kweSiqinisekiso soNikezelo loMhlaba esinguNombolo T33834/1980

5. nxenye 1 yeFama i-Annex Goedemoed enguNombolo 127 Robertson, ekuMasipala waseLangeberg, iCandelo laseRobertson, kwiPhondo laseNtshona Koloni;
Ubungakanani: 364, 0832 (Amakhulu Amathathu Namashumi Amathandathu Anesine ikhoma Iqanda Isibhozo Isithathu Isibini) eehektare;
Ephantsi kweSiqinisekiso soNikezelo loMhlaba esinguNombolo T69811/1993
6. nxenye 94 (inxenye yeNxenye 8) yeFama iGoedemoed enguNombolo 128 Robertson, ekuMasipala waseLangeberg, iCandelo laseRobertson, kwiPhondo laseNtshona Koloni;
Ubungakanani: 141, 5820 (Ikhulu Elinye Namashumi Amane Anesine ikhoma Isihlanu Isibhozo Isibini Iqanda) eehektare;
Ephantsi kweSiqinisekiso soNikezelo loMhlaba esinguNombolo T69811/1993
7. ndawo eseleyo yeNxenye 8 yeFama iGoedemoed enguNombolo 128 Robertson, ekuMasipala waseLangeberg, iCandelo laseRobertson, kwiPhondo laseNtshona Koloni;
Ubungakanani: 162, 1185 (Ikhulu Elinye Namashumi Amathandathu Anesibini ikhoma Isinye Isinye Isibhozo Isihlanu) eehektare;
Ephantsi kweSiqinisekiso soNikezelo loMhlaba esinguNombolo T24416/1996

Ndinikezela ngegama elithi “Ulondolozo lweNdalo iFontein iSunshine” kule ndawo yolondolozo, emida yayo eboniswe kwidayagram kaNocanda-Jikelele enguNombolo 2878/2019 njengoko kubonisiwe kwiShedyuli.

Sisayinwe e-Kapa ngalo mhla 17 kwinyanga yoKwindla 2021.

AW BREDELL

**UMPHATHISWA WEPHONDO WORHULUMENTE WENGINQI, IMICIMBI
YOKUSINGQONGILEYONOCWANGCISO LOPHUHLISO**

PROVINCIAL NOTICE

P.N. 40/2021

30 April 2021

**DEPARTMENT OF ENVIRONMENTAL AFFAIRS AND DEVELOPMENT
PLANNING****NATIONAL ENVIRONMENTAL MANAGEMENT: PROTECTED AREAS ACT, 2003
(ACT 57 OF 2003)****DECLARATION OF VILJOENSDRIFT NATURE RESERVE**

I, Anton Wilhelm Bredell, Provincial Minister of Local Government, Environmental Affairs and Development Planning in the Western Cape, under section 23(1)(a)(i) of the National Environmental Management: Protected Areas Act, 2003 (Act 57 of 2003), declare a nature reserve on:

1. Portion 27 (Viljoens Drift) (a portion of Portion 2) of the Farm Goedemoed No. 128 Robertson, situate in the Langeberg Municipality, Division Robertson, Western Cape Province;
In extent 54, 7267 (Fifty-Four comma Seven Two Six Seven) hectares;
Held by Deed of Transfer Number T87880/1996;
2. Remainder of Portion 2 of the Farm Annex Goedemoed No. 127 Robertson, situate in the Langeberg Municipality, Division Robertson, Western Cape Province;
In extent 213, 2848 (Two Hundred and Thirteen comma Two Eight Four Eight) hectares;
Held by Deed of Transfer Number T87880/1996.

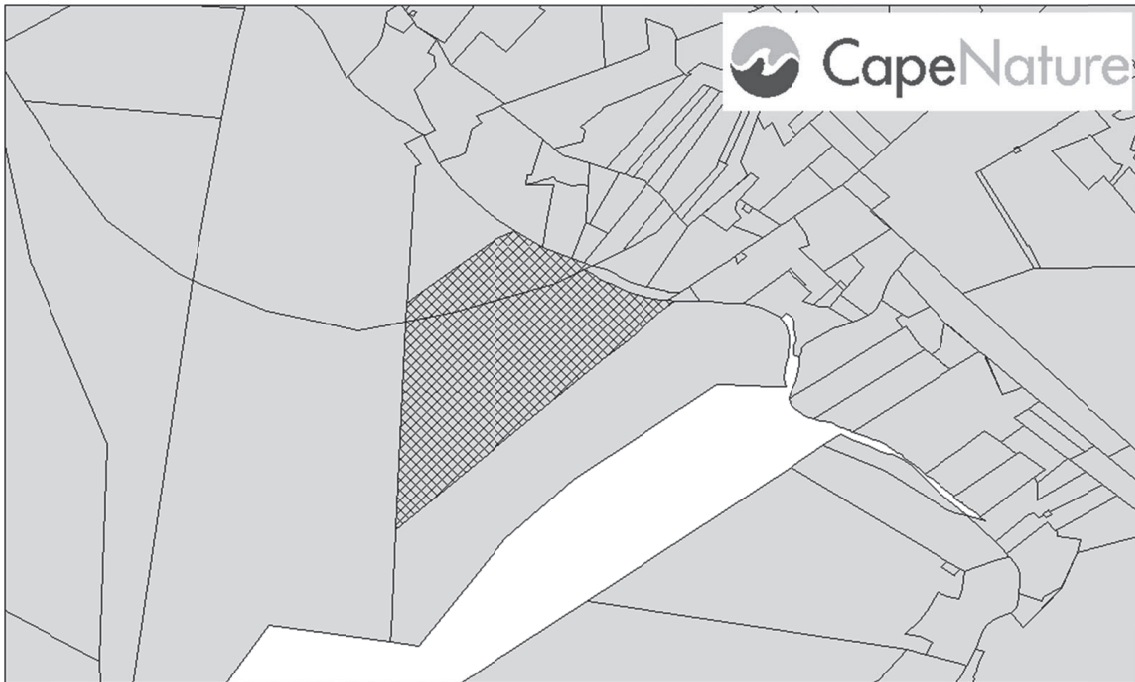
I assign the name “Viljoensdrift Nature Reserve” to the reserve, of which the boundaries are reflected on the map and Surveyor-General Diagram No. 2879/2019 as set out in the Schedule.

The Surveyor-General Diagram No. 2879/2019 may also be viewed at:
<https://www.capenature.co.za/care-for-nature/stewardship/>.

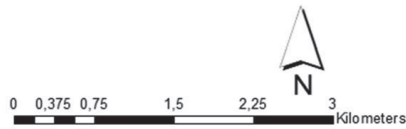
Signed at Cape Town this 8th day of March 2021.

AW BREDELL
**PROVINCIAL MINISTER OF LOCAL GOVERNMENT, ENVIRONMENTAL AFFAIRS
AND DEVELOPMENT PLANNING**

SCHEDULE



Viljoensdrift Nature Reserve
 Farm/Erven Boundary



Map Information Projection: WGS84, UTM Zone 35S
 Date: 01 December 2020
 Compiler: E. Voges

FRAMED FOR PROCLAMATION PURPOSES - ACT 57/2003

PLAN NO. 2879/2019
SCALE: 1:500

S.E. No. 2378/2009
 Shaded
 for Proclamation
 18.02.2020

SCHEDULE OF FARMS

Description of figure subject to Nature Reserve	Area	Units	Ezinyaniso	Date of Transfer
11 a R.C. of inner edge of road 'g' from edge of road 'f' to outer edge of road 'h'	15,96	Portions 2 of the farm numbered No.122	130/1/200	15.06.08
12 a Inner edge of road 'b' to 'c'	1,28			
13 a Inner edge of road 'c' to 'd' to 'e' to 'f' to 'g' to 'h' to 'i' to 'j' to 'k' to 'l' to 'm' to 'n' to 'o' to 'p' to 'q' to 'r' to 's' to 't' to 'u' to 'v' to 'w' to 'x' to 'y' to 'z'	32,14	Portion 2 of the farm numbered No.122	130/1/200	15.06.08
14 a Inner edge of road 'b' to 'c' to 'd' to 'e' to 'f' to 'g' to 'h' to 'i' to 'j' to 'k' to 'l' to 'm' to 'n' to 'o' to 'p' to 'q' to 'r' to 's' to 't' to 'u' to 'v' to 'w' to 'x' to 'y' to 'z'	1,28			

Notes:
 1. All areas shown are subject to the provisions of the Nature Reserves Act, 1956 (Act No. 93 of 1956).
 2. The boundaries of the Nature Reserves are shown by a dashed line.
 3. The boundaries of the farms are shown by a solid line.
 4. The boundaries of the roads are shown by a solid line with a dashed center line.
 5. The boundaries of the water bodies are shown by a solid line with a wavy center line.
 6. The boundaries of the other features are shown by a solid line.

PROVINSIALE KENNISGEWING

P.K. 40/2021

30 April 2021

DEPARTEMENT VAN OMGEWINGSAKE EN ONTWIKKELINGSBEPLANNING**“NATIONAL ENVIRONMENTAL MANAGEMENT: PROTECTED AREAS ACT,
2003” (WET 57 VAN 2003)****VERKLARING VAN VILJOENSDRIFT NATUURRESERVAAT**

Ek, Anton Wilhelm Bredell, Provinsiale Minister van Plaaslike Regering, Omgewingsake en Ontwikkelingsbeplanning in die Wes-Kaap, kragtens artikel 23(1)(a)(i) van die “National Environmental Management: Protected Areas Act, 2003” (Wet 57 van 2003), verklaar ’n natuurreserveaat op:

1. Gedeelte 27 (Viljoens Drift) (’n gedeelte van Gedeelte 2) van die Plaas Goedemoed Nr. 128 Robertson, geleë in die Langeberg Munisipaliteit, Afdeling Robertson, Provinsie Wes-Kaap;
Groot: 54, 7267 (Vier-en-Vyftig komma Sewe Twee Ses Sewe) hektaar;
Gehou kragtens Transportakte Nr. T87880/1996; en
2. Restant van Gedeelte 2 van die Plaas Annex Goedemoed Nr. 127 Robertson, geleë in die Langeberg Munisipaliteit, Afdeling Robertson, Provinsie Wes-Kaap;
Groot: 213, 2848 (Twee Honderd en Dertien komma Twee Ag Vier Ag) hektaar;
Gehou kragtens Transportakte Nr. T87880/1996.

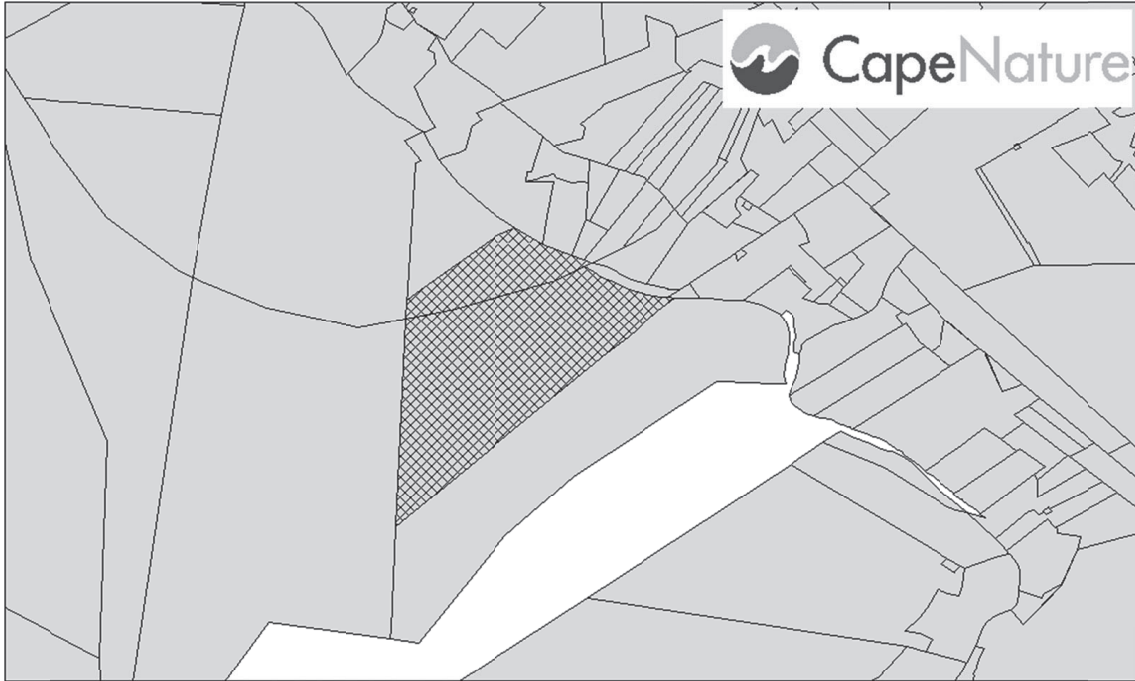
Ek ken die naam “Viljoensdrift Natuurreserveaat” toe aan die reserveaat, waarvan die grense weergegee word op die kaart en Landmeter-generaaldigram Nr. 2879/2019, soos uiteengesit in die Bylae.

Die Landmeter-generaaldigram Nr. 2879/2019 kan ook gevind word by:
<https://www.capenature.co.za/care-for-nature/stewardship/>.

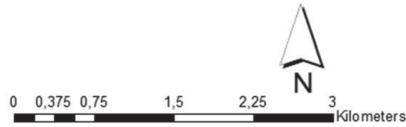
Geteken te Kaapstad op hede die 8ste dag van Maart 2021.

AW BREDELL**PROVINSIALE MINISTER VAN PLAASLIKE REGERING, OMGEWINGSAKE EN
ONTWIKKELINGSBEPLANNING**

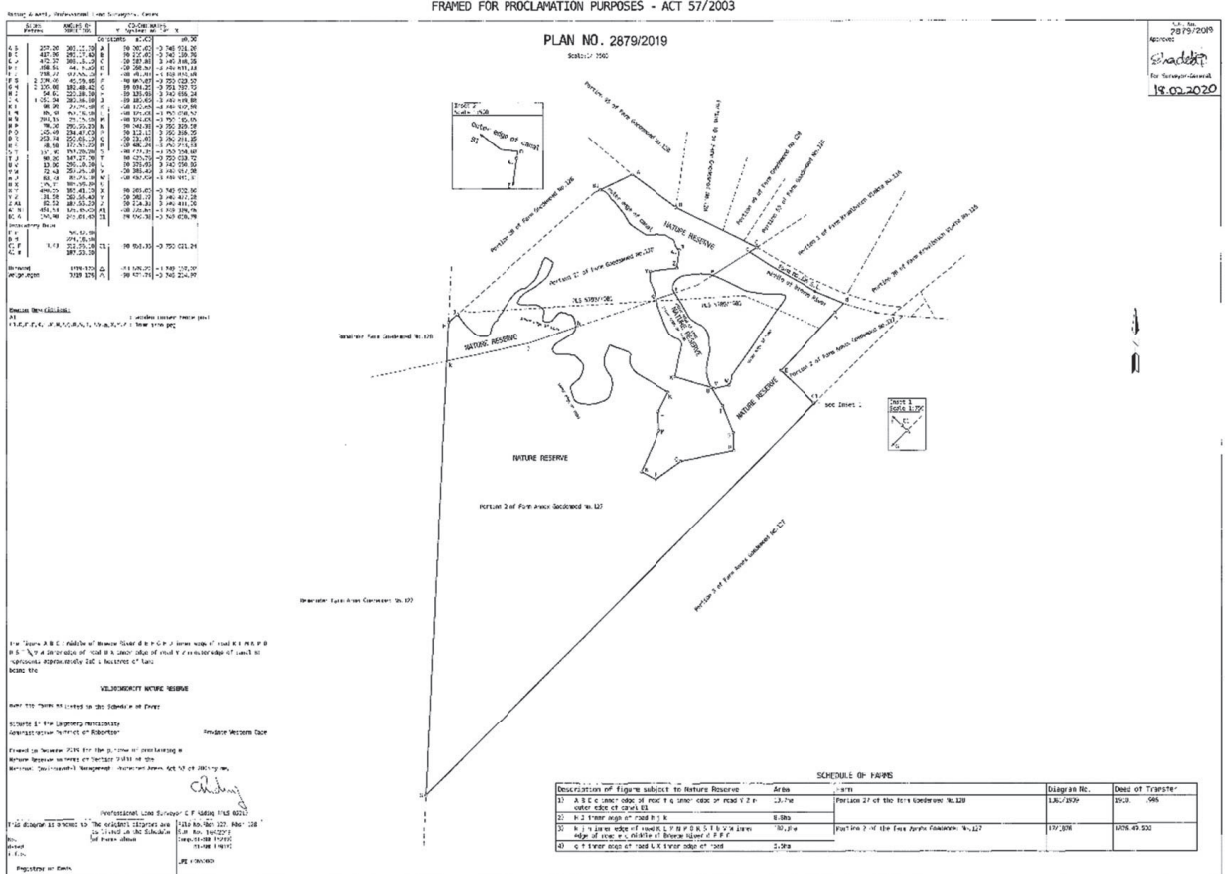
BYLAE



 Viljoensdrift Nature Reserve
 Farm/Erven Boundary



Map Information Projection:
WGS84, UTM Zone 35S
 Date: 01 Desember 2020
 Compiler: E. Voges



ISAZISO SEPHONDO

I.S. 40/2021

30 kuTshazimpuzi 2021

ISEBE LEMICIMBI YOKUSINGQONGILEYO NOCWANGCISO LOPHUHLISO**KUMTHETHO WOKULONDOLOZWA KWENDALO YESIZWE: UMTHETHO
WEENDAWO ZOLONDOLOZO EZIKHUSELWEYO, 2003
(UMTHETHO WAMA-57 KA-2003)****ISIBHENGEZO SENDAWO YOLONDOLOZO LWENDALO YASE-
VILJOENSDRIFT**

Mna, Anton Wilhelm Bredell, uMphathiswa wePhondo wooRhulumente beNdawo, iMicimbi yokuSingqongileyo noCwangciso loPhuhliso eNtshona Koloni, ngaphantsi kwecandelo 23(1)(a)(i) loMthetho Wokulondolozwa Kwendalo Yesizwe: UMthetho Weendawo Zolondolozo Ezikhuselweyo, 2003 (uMthetho 57 ka-2003), ndibhengeza indawo yolondolozo lwendalo ekwi:

1. Nxenye 27 (Viljoens Drift) (isahlulo seNxenye 2) yeFama yaseGoedemoed eguNombolo 128, ekuMasipala waseLangeberg, iCandelo laseRobertson, kwiPhondo leNtshona Koloni;
Eziihektare ezingama-54, -7267 (Amashumi aMahlanu aneSine ikoma Isixhenxe Isibini Isithandathu Isixhenxe) ngokobukhulu;
Ephantsi kweNombolo Yonikezelo loMhlaba engu-T87880/1996; kunye
2. Intsalela yeNxenye 2 yeFama i-Annex Goedemoed enguNombolo 127, ekuMasipala waseLangeberg, iCandelo laseRobertson, kwiPhondo leNtshona Koloni;
Eziihektare ezingama-213, 2848 (Amakhulu Amabini aneShumi elineSithathu ikoma Isibini Isibhozo Isine Isibhozo) ngokobukhulu;
Ephantsi kweNombolo Yonikezelo loMhlaba engu-T87880/1996.

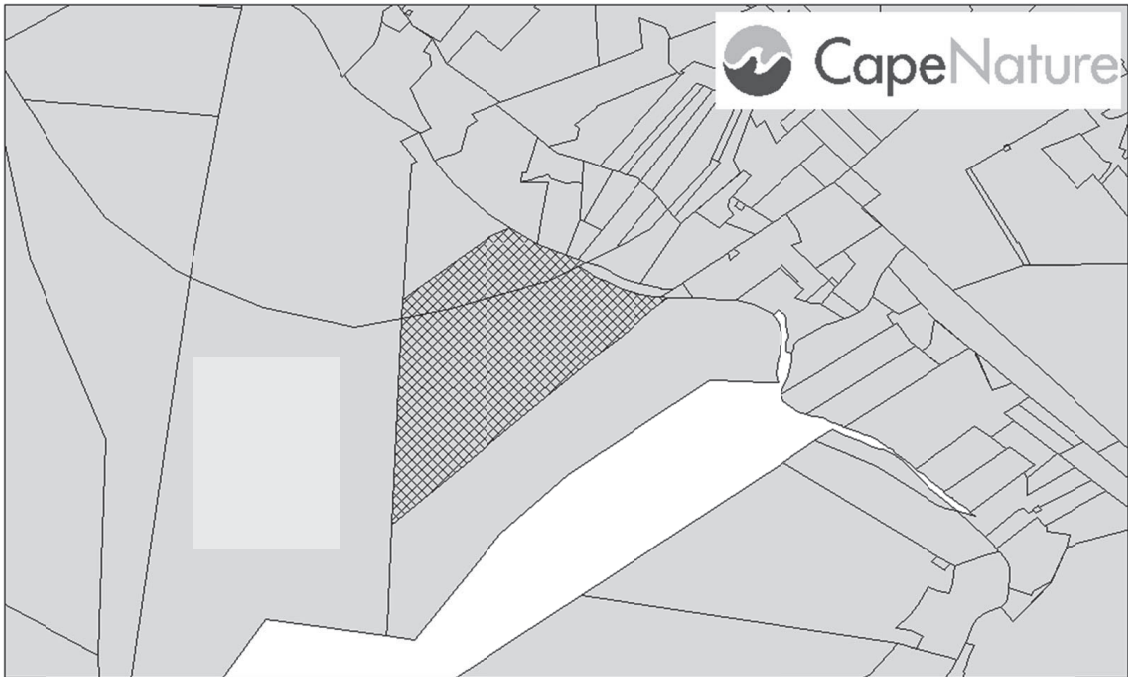
Ndinikezela ngegama elithi “Indawo yoLondolozo lweNdalo yaseViljoensdrift” kwindawo yolondolozo, enemida eboniswe kuMzobo kaNocanda-Jikelele onguNombolo 2879/2019 njengoko kubonisiwe kwiShedyuli.

Umzobo kaNocanda-Jikelele unokwazi ukubonwa kananjalo ku:-
<https://www.capenature.co.za/care-for-nature/stewardship/>.

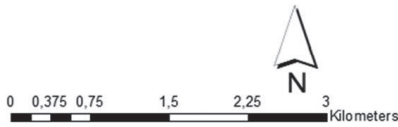
Sityikitywe e-Kapa ngalo mhla 8 kwinyanga yoKwindla 2021.

**AW BREDELL
UMPHATHISWA WEPHONDO WOORHULUMENTE BENDAWO, IMICIMBI
YOKUSINGQONGILEYO NOCWANGCISO LOPHUHLISO**

ISHEDYULI



 Viljoensdrift Nature Reserve
 Farm/Erven Boundary



Map Information Projection:
WGS84, UTM Zone 35S
 Date: 01 December 2020
 Compiler: E. Voges

