

2020/21 BUDGET IN A NUTSHELL

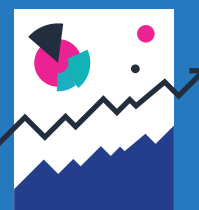


Our Commitment

"We are committed to accelerating human settlement delivery, while promoting social inclusion through the development of integrated, resilient, safe and sustainable human settlements in an open society."

Our 4 radical drivers:

1. Radical Acceleration of Housing Opportunities
2. Radical Implementation of Innovative Solutions
3. An Integrated Approach to Human Settlements.
4. Radical empowerment and job creation



Our Budget for 2020/21

R2.4billion
will be used to deliver

17,235
housing
opportunities

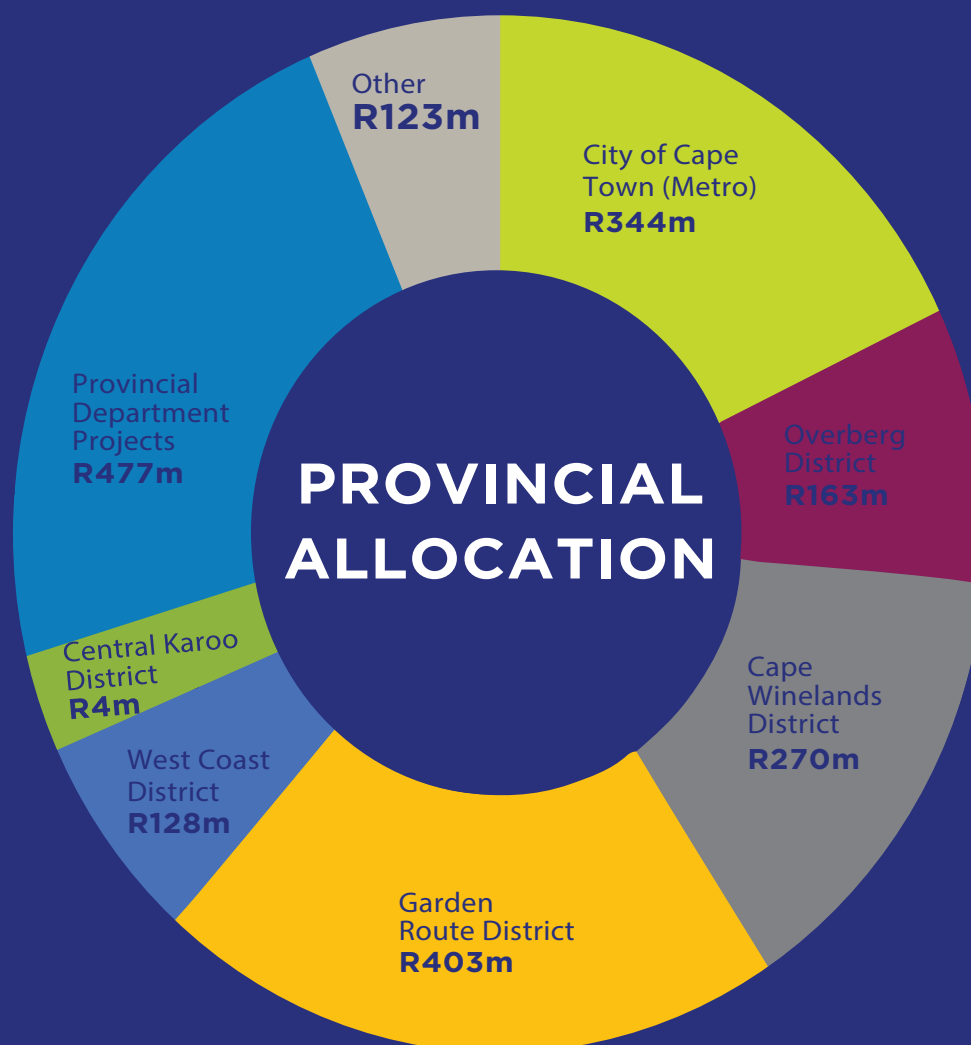


7,343
sites

9,892
units

EMPOWERMENT

Of our HSDG allocation, **50% (R1.2b)** will be awarded to contractors in designated groups (Previously disadvantage individuals, women, people with disabilities, small enterprises).



TITLE DEEDS

R67.9 million
to transfer **7 000**
title deeds

UISP

We will deliver over **2,000** sites (ie. 2,056) as part of the UISP

FLISP

1,593
subsidies to be
allocated

JOB CREATION

We will also facilitate **800**
job opportunities and train
150 young people
in the built
environment



PRIORITY HOUSING DEVELOPMENT AREAS (PHDA)

These areas are aimed at transforming human settlements and providing access to social and economic opportunities. We will develop integrated plans for the PHDAs by jointly planning and budgeting for human settlements with its key roleplayers, thereby ensuring spatial transformation.

SAFETY

The Department will ensure Human Settlements are designed and developed to prevent crime and foster safe and cohesive communities by including stoeps/patios, additional street lighting, and making provision for public open spaces.

GREEN PROCUREMENT

To mainstream and promote green outcomes in the construction of state-subsidised housing in the Western Cape. This will be done through promoting Excellence in Design for Greater Efficiency (EDGE) certification. EDGE is a green-building certifications system that encourages and promotes sustainable building methods.



Western Cape
Government

Human Settlements

Through our efforts we remain committed to Our Vision

Residents of the Western Cape have access to liveable, accessible, safe and multi-opportunity settlements.