

TRANSNET

delivering freight reliably

# 4<sup>th</sup> Port Of Cape Town Dialogue Session

Date: 20 January 2023

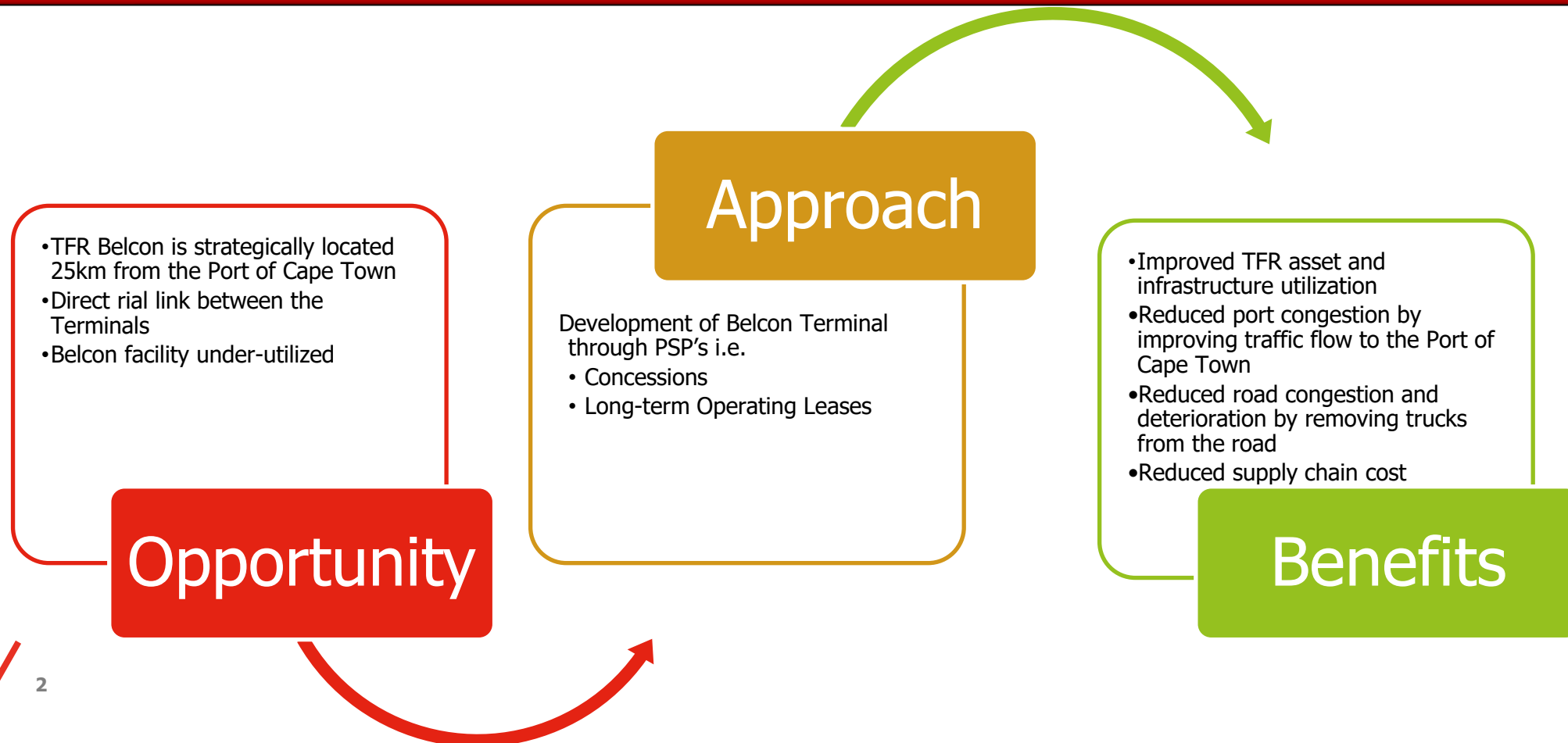




# Transnet Value Proposition for Belcon

## Main Purpose

- Optimize and integrate Terminal operation capacity to enable Transnet business growth initiatives
- Driving the road-to-rail strategy through reliable collaborative Transnet service offerings



# Belcon Developments

## Repurposing Transnet Park Terminal and Warehouse

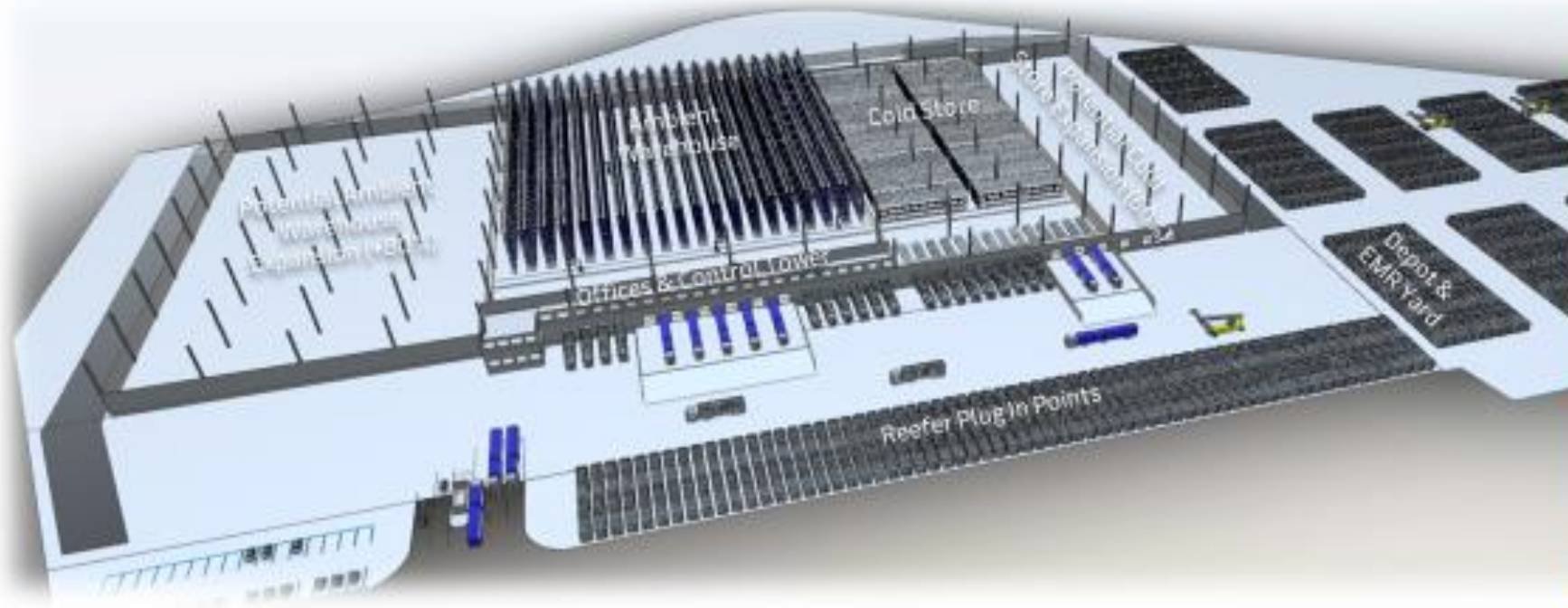


### Belcon Developments

- Increase cold chain capability – cold chain compliance to international quality standards
- PSP's: Tenders awarded to MEARSK and TITAN CARGO for long term lease of vacant land at Transnet Park to attract volumes from Road to Rail
  - ✓ Warehousing
  - ✓ Cold Storage - Increase reefer capacity (plug-points)
  - ✓ Container Depot
- Develop truck staging areas within Transnet Park facility to decongest Robert Sobukwe Road – Traffic Impact study to be conducted
- Build additional access road from Kasselsvlei into Transnet Park to ease traffic flow in and out of Transnet Park



# MEARSK Logistics Hub Proposed Development



## CREATING VALUE AND REDUCING COSTS THROUGH SUPPLY CHAIN INTEGRATION

- 1 Reducing supply chain cost, making South Africa more cost competitive globally
- 2 Removing min 80,000 trucks from roads reducing road congestion and deterioration
- 3 Reducing port gate congestion by 22%, improving flow in Cape Town Port
- 4 Growing TFR utilisation and Infrastructure
- 5 Creating permanent and temporary jobs, improving lives

### CAPABILITIES



**12,000 m<sup>2</sup>**  
Cold Store



**20,000 m<sup>2</sup>**  
Complex fulfilment Warehouse



**50,000 m<sup>2</sup>**  
Container depot and PTI facility



# MAERSK Logistics Hub Proposed Development



## Volume & Operational Commitments

Delivering on Government's road to rail initiatives & port decongestion strategies

**~73 736 FFE**  
Total FFE per year



### Short Haul (Import + Export)

**3** Bi-directional Trains    **36** Wagons

**216** FFE Daily

**1 368** FFE/Week\*

**71 136** FFE/Annual

\*3 bi-directional trains per day MON-FRI and 2 bi-directional trains on SAT/SUN



### Long Haul (Import + Export)

**1** Train a week    **50** Wagons

**50** FFE/Week\*

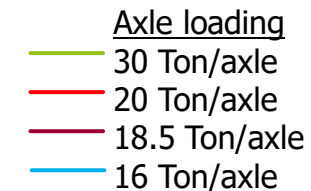
**2 600** FFE/Annual

CAPECOR is facing several challenges, once products have stabilised Maersk is committed to grow Upington & Hew River corridors. We estimate an additional 2 160 FFE p/a (not incl above)





# Overview of current Agri Sector Rail Initiatives



## Kakamas - Upington

Siding and lines currently in the market for concession, closing Feb'23

## Lutzville

To be awarded end Jan'23

## Belcon

Capacity increase initiatives:

- Warehousing
- Cold storage facilities
- Container park

## Worcester

Worcester terminal to be advertised Jan'23

## Klawer

Klawer terminal on hold

## Orchard

Orchard terminal to be advertised Jan'23

## Ashton

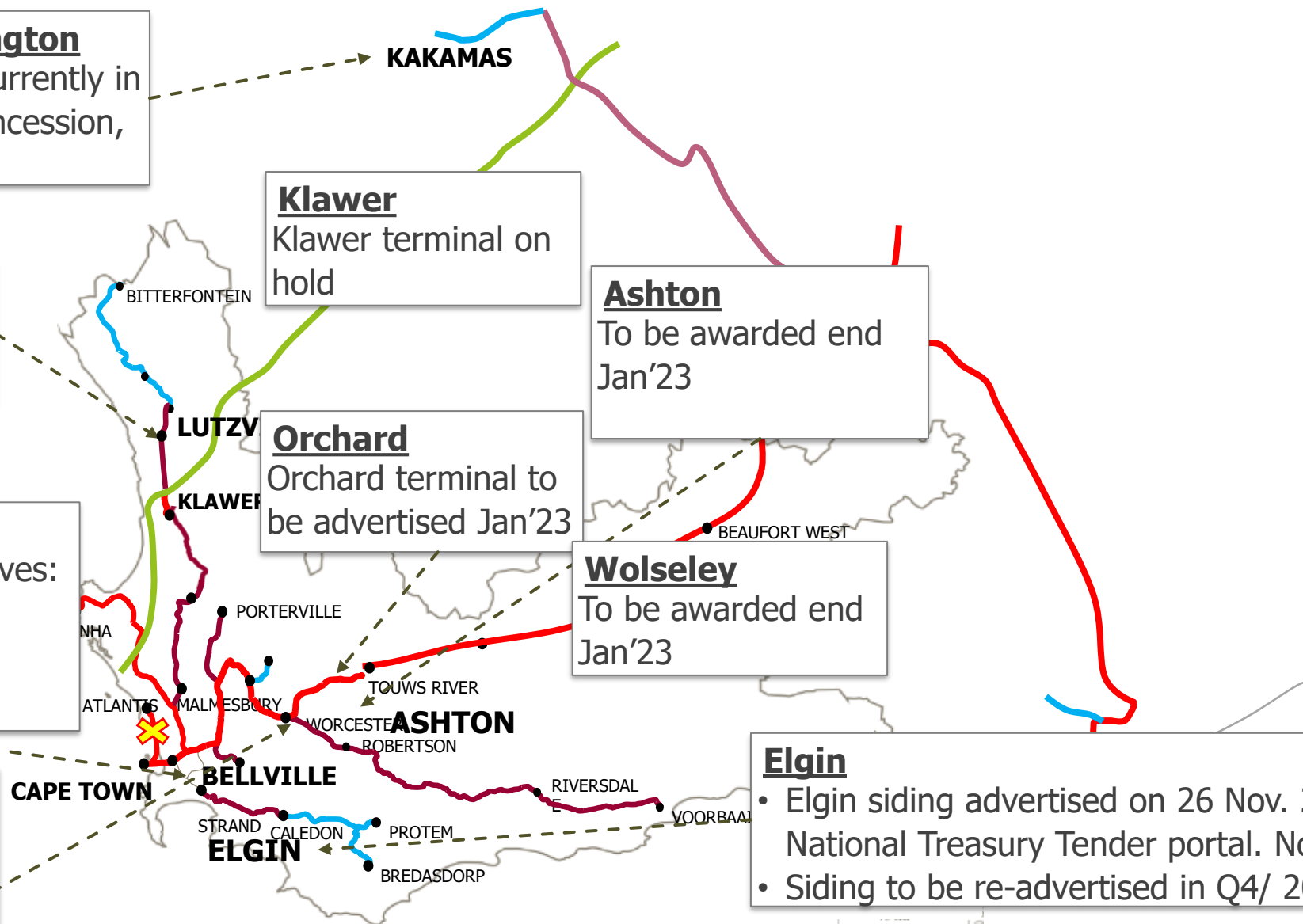
To be awarded end Jan'23

## Wolseley

To be awarded end Jan'23

## Elgin

- Elgin siding advertised on 26 Nov. 2021 via National Treasury Tender portal. No bids received
- Siding to be re-advertised in Q4/ 2022



# KEY CHALLENGES IMPACTING OPERATIONS

---

1. Cable theft – TFR busy reinstating the vandalized network
2. Locomotive Availability & Reliability



TRANSNET



delivering freight reliably

Thank you

