



Western Cape  
Government

# crime statistics 2022-23



DEPARTMENT OF POLICE OVERSIGHT AND COMMUNITY SAFETY

#### DISCLAIMER

Compiled by combining the four quarter crime statistics releases April 2022-March 2023

#### SOURCE

SAPS Crime Statistics  
[www.saps.gov.za/services/crimestats.php](http://www.saps.gov.za/services/crimestats.php)





# Contents

<b>Introduction .....</b>	<b>2</b>
<b>Part 1.....</b>	<b>3</b>
1. Western Cape Annual Crime Statistics .....	4
• 1.1. Contact Crimes.....	5
• 1.2. Sexual Offences.....	6
• 1.3. Contact Related Crimes.....	6
• 1.4. Property Related Crimes.....	7
• 1.5. Other Serious Crime .....	7
• 1.6. Community Reported Serious Crime .....	8
• 1.7. Crimes Detected as a Result of Police Action .....	9
<b>Part 2.....</b>	<b>10</b>
2. Western Cape District Crime Statistics .....	11
• 2.1. Winelands .....	12
• 2.2. Central Karoo .....	13
• 2.3. City of Cape Town .....	14
• 2.4. Garden Route.....	15
• 2.5. Overberg.....	16
• 2.6. West Coast .....	17
<b>Part 3.....</b>	<b>18</b>
3. Conclusion .....	19
<b>Appendix .....</b>	<b>20</b>



## Introduction

THE WESTERN  
CAPE, AND CITIES  
LIKE CAPE TOWN,  
FACE ADDITIONAL  
CHALLENGES  
RELATED TO GANG  
VIOLENCE, DRUG-  
RELATED CRIME,  
AND PROPERTY  
CRIME.

South Africa has been referred to as one of the most homicidal, violent, and dangerous places across the globe. The country has for many years experienced high crime rates, particularly violent crimes such as homicides, assaults, and robberies. The reasons for these high crime rates are complex and often linked to socioeconomic factors, inequality, unemployment, and other social issues.

The Western Cape, and cities like Cape Town, face additional challenges related to gang violence, drug-related crime, and property crime. The government has made efforts to address these issues through various strategies, law enforcement initiatives, and community engagement programs.

The South African Police Service release crime statistics quarterly and this is a summary of the crime statistics for 2022/23 – the period April 2022 to March 2023, derived from combining the four quarterly releases<sup>1</sup>.

<sup>1</sup> At the point of publication SAPs had not released the annual crime statistics for 2022/23. The final annual SAPS crime data may differ slightly from the combined quarterly data in this document

# Part 1

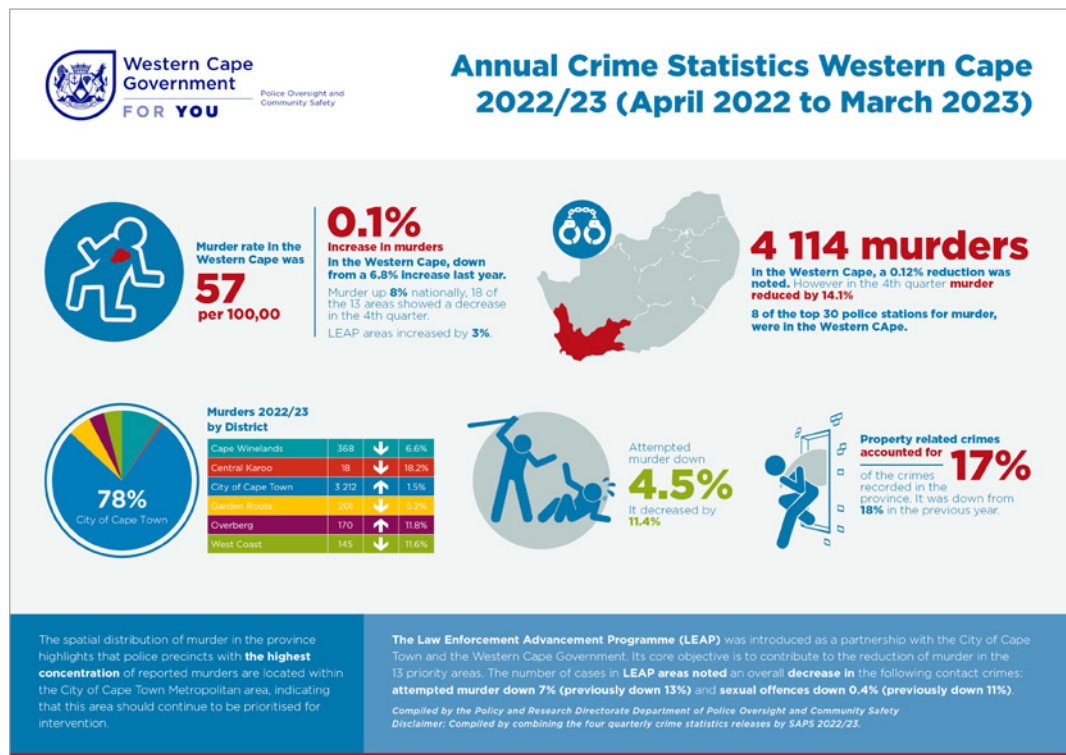


# 1. Western Cape Annual Crime Statistics

The crime statistics for the Western Cape for 2022/23 show promise however they also indicate that there is still a long way to go towards making the Western Cape safer through the implementation of the Premier's vision via the Safety Plan. Compared with 2021/22, murder increased slightly but a significant reduction is noted in the 4th quarter. Attempted murder was also down. Initiatives such as the Law Enforcement Advancement Plan in partnership with the City of Cape Town, provided more boots on the ground in identified priority areas in the metro and proved to be successful, with an overall reduction in attempted murder in these areas for the year. Contact sexual offences decreased by over a third, however increases were noted in attempted sexual offences, including the categories of rape and sexual assault.

There was an overall increase in contact related crimes and an increase in malicious damage to property and arson. There were increases in property related crimes in all areas and theft out of a motor vehicle was the highest category to increase, stock theft reduced slightly. All categories of other serious crime increased, commercial crime most significantly. There was a notable increase in community reported crime, indicating that more community members are reporting crimes to the police. Crimes detected as a result of police action were up in all areas, which is an indication of good or improved police work. High detection in the category of driving under the influence of alcohol and drugs was noted along with sexual offences detected as a result of police action.

INITIATIVES SUCH AS THE LAW ENFORCEMENT ADVANCEMENT PLAN IN PARTNERSHIP WITH THE CITY OF CAPE TOWN, PROVIDED MORE BOOTS ON THE GROUND IN IDENTIFIED PRIORITY AREAS.





THERE WAS AN OVERALL INCREASE OF 10.4% IN CONTACT CRIMES IN THE WESTERN CAPE, WITH A TOTAL OF 112 707 RECORDED CRIMES.

## 1.1. Contact Crimes

There was an overall increase in contact crimes in the Western Cape, the highest increases were for common robbery and assault, while attempted murder decreased. Murder increased slightly but a significant reduction was noted in the 4th quarter.

CRIME CATEGORY	REPUBLIC OF SOUTH AFRICA							WESTERN CAPE						
	2020/21	2021/22	DIFF	%	2022/23	DIFF	%	2020/21	2021/22	DIFF	%	2022/23	DIFF	%
Murder	19 972	25 181	5 209	26.1%	27 272	2 091	8.3%	3 848	4 109	261	6.8%	4 114	5	0.1%
Sexual Offences	46 214	52 694	6 480	14.0%	53 888	1 194	2.3%	6 437	7 163	726	11.3%	7 310	147	2.1%
Attempted murder	18 707	22 095	3 388	18.1%	24 939	2 844	12.9%	4 143	3 669	-474	-11.4%	3 503	-166	-4.5%
Assault with the intent to inflict grievous bodily harm	143 393	162 842	19 449	13.6%	169 558	6 716	4.1%	19 452	21 901	2 449	12.6%	23 460	1 559	7.1%
Common assault	149 442	169 963	20 521	13.7%	184 983	15 020	8.8%	33 857	37 702	3 845	11.4%	41 817	4 115	10.9%
Common robbery	37 648	41 600	3 952	10.5%	47 085	5 485	13.2%	7 354	8 221	867	11.8%	10 073	1 852	22.5%
Robbery with aggravating circumstances	119 841	132 788	12 947	10.8%	145 934	13 146	9.9%	19 050	19 292	242	1.3%	22 430	3 138	16.3%
<b>Total Contact Crimes (Crimes Against The Person)</b>	<b>535 217</b>	<b>607 163</b>	<b>71 946</b>	<b>13.4%</b>	<b>653 659</b>	<b>46 496</b>	<b>7.7%</b>	<b>94 141</b>	<b>102 057</b>	<b>7 916</b>	<b>8.4%</b>	<b>112 707</b>	<b>10 650</b>	<b>10.4%</b>

- There were 112 707 total contact crimes recorded in the Western Cape
- A 10.4% increase in total contact crimes is noted
- A slight increase of 0.1% is noted in murder (from 4 109 to 4 114 cases)
- Sexual offences increased by 2.1%
- Attempted murder decreased by 4.5% (from 3 669 to 3 503 cases)
- Assault with the intent to inflict grievous bodily harm increased by 7.1%
- Common assault increased by 10.9%
- Common robbery increased by 22.5%
- Robbery with aggravating circumstances increased by 16.3%

## 1.2. Sexual Offences

Contact sexual offences decreased by over a third, however increases were noted in attempted sexual offences, rape and sexual assault.

CRIME CATEGORY	REPUBLIC OF SOUTH AFRICA							WESTERN CAPE						
	2020/21	2021/22	DIFF	%	2022/23	DIFF	%	2020/21	2021/22	DIFF	%	2022/23	DIFF	%
Rape	36 330	41 739	5 409	14.9%	43 037	1 298	3.1%	4 442	4 843	401	9.0%	5 036	193	4.0%
Sexual assault	7 025	7 798	773	11.0%	7 599	-199	-2.6%	1 440	1 627	187	13.0%	1 679	52	3.2%
Attempted sexual offences	1 800	2 027	227	12.6%	2 378	351	17.3%	321	389	68	21.2%	405	16	4.1%
Contact sexual offences	1 059	1 130	71	6.7%	874	-256	-22.7%	234	304	70	29.9%	190	-114	-37.5%
<b>Total sexual offences</b>	<b>46 214</b>	<b>52 694</b>	<b>6 480</b>	<b>14.0%</b>	<b>53 888</b>	<b>1 194</b>	<b>2.3%</b>	<b>6 437</b>	<b>7 163</b>	<b>726</b>	<b>11.3%</b>	<b>7 310</b>	<b>147</b>	<b>2.1%</b>

- There were 7 310 sexual offences in the Western Cape
- A 2.1% increase in sexual offences is noted
- Rape increased by 4.0%
- Sexual Assault increased by 3.2%
- Attempted sexual offences increased by 4.1%
- Contact sexual offences decreased overall by 37.5% (from 304 to 190 cases)

THERE WERE  
7 310 SEXUAL  
OFFENCES IN THE  
WESTERN CAPE,  
A DECREASE OF  
OVER A THIRD.

## 1.3. Contact Related Crimes

There was an overall increase in contact related crimes including an increase in malicious damage to property and arson.

CRIME CATEGORY	REPUBLIC OF SOUTH AFRICA							WESTERN CAPE						
	2020/21	2021/22	DIFF	%	2022/23	DIFF	%	2020/21	2021/22	DIFF	%	2022/23	DIFF	%
Arson	3 238	4 102	864	26.7%	3 671	-431	-10.5%	674	711	37	5.5%	712	1	0.1%
Malicious damage to property	99 031	113 403	14 372	14.5%	115 145	1 742	1.5%	24 218	26 339	2 121	8.8%	27 883	1 544	5.9%
<b>Total contact-related crimes</b>	<b>102 269</b>	<b>117 505</b>	<b>15 236</b>	<b>14.9%</b>	<b>118 816</b>	<b>1 311</b>	<b>1.1%</b>	<b>24 892</b>	<b>27 050</b>	<b>2 158</b>	<b>8.7%</b>	<b>28 595</b>	<b>1 545</b>	<b>5.7%</b>

- A total of 28 595 cases of contact related crimes was recorded in the Western Cape
- A 5.7% increase in total contact related crimes is noted
- The Western Cape accounted for 24.1% of all contact related crimes nationally (almost one quarter)
- A slight increase of 0.1% (from 711 to 712 cases) in arson is noted
- Malicious damage to property increased by 5.9%

## 1.4. Property Related Crimes

Property related crimes increased in all sub-categories with theft out of a motor vehicle being the highest increase. Stock theft reduced slightly.

CRIME CATEGORY	REPUBLIC OF SOUTH AFRICA							WESTERN CAPE						
	2020/21	2021/22	DIFF	%	2022/23	DIFF	%	2020/21	2021/22	DIFF	%	2022/23	DIFF	%
Burglary at non-residential premises	65 508	62 197	-3 311	-5.1%	62 539	342	0.5%	9 612	8 209	-1 403	-14.6%	8 358	149	1.8%
Burglary at residential premises	159 721	156 170	-3 551	-2.2%	163 455	7 285	4.7%	27 265	26 291	-974	-3.6%	28 172	1 881	7.2%
Theft of motor vehicle and motorcycle	35 023	37 402	2 379	6.8%	37 426	24	0.1%	4 511	4 732	221	4.9%	4 964	232	4.9%
Theft out of or from motor vehicle	83 183	81 504	-1 679	-2.0%	87 125	5 621	6.9%	22 426	21 532	-894	-4.0%	24 060	2 528	11.7%
Stock-theft	26 310	25 001	-1 309	-5.0%	27 145	2 144	8.6%	925	722	-203	-21.9%	718	-4	-0.6%
<b>Total property-related crimes</b>	<b>369 745</b>	<b>362 274</b>	<b>-7 471</b>	<b>-2.0%</b>	<b>377 690</b>	<b>15 416</b>	<b>4.3%</b>	<b>64 739</b>	<b>61 486</b>	<b>-3 253</b>	<b>-5.0%</b>	<b>66 272</b>	<b>4 786</b>	<b>7.8%</b>

- A total of 66 272 cases of property related crime was recorded in the Western Cape
- A 7.8% increase in total property related crimes is noted (from 61 486 to 66 272 cases).
- Burglary at non-residential premises increased by 1.8%
- Burglary at residential premises increased by 7.2%
- Theft of motor vehicle and motorcycle increased by 4.9%
- Theft out of or from a motor vehicle increased by 11.7%
- A slight decrease of 0.6% is noted in stock-theft (from 722 to 718 cases).

PROPERTY RELATED CRIMES INCREASED BY 7.8% WITH THEFT OUT OF A MOTOR VEHICLE BEING THE HIGHEST INCREASE. AT 11.7%.

## 1.5. Other Serious Crime

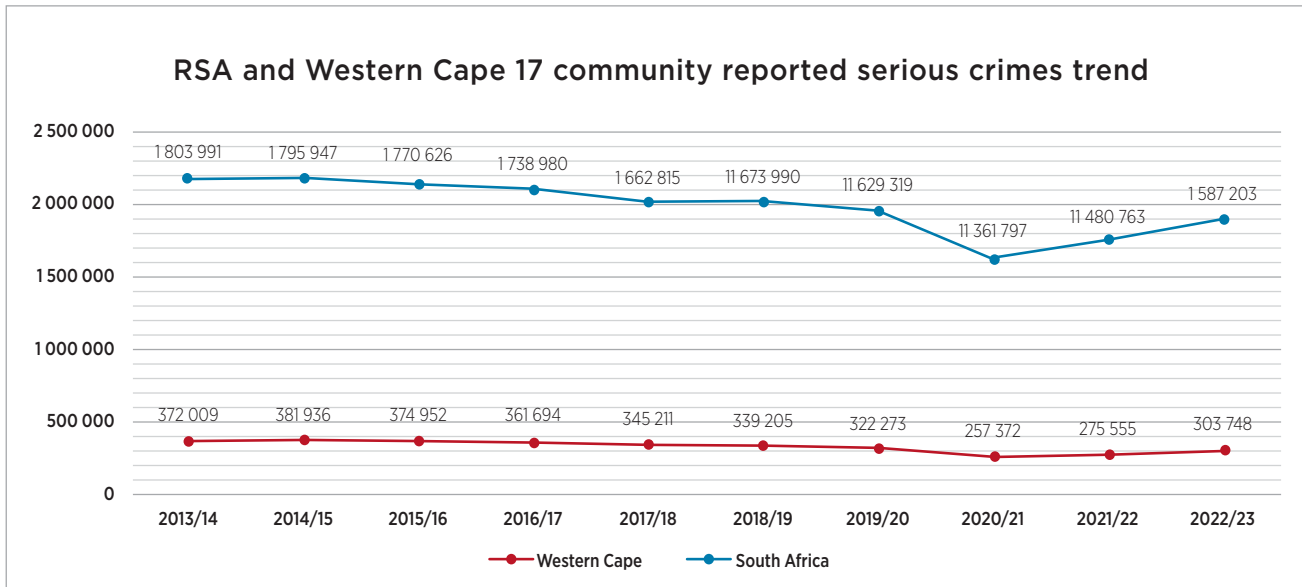
All categories of other serious crime increased, commercial crime most significantly.

CRIME CATEGORY	REPUBLIC OF SOUTH AFRICA							WESTERN CAPE						
	2020/21	2021/22	DIFF	%	2022/23	DIFF	%	2020/21	2021/22	DIFF	%	2022/23	DIFF	%
All theft not mentioned elsewhere	224 345	249 215	24 870	11.1%	276 039	26 824	10.8%	49 928	57 543	7 615	15.3%	64 729	7 186	12.5%
Commercial crime	82 890	102 057	19 167	23.1%	111 311	9 254	9.1%	13 294	18 415	5 121	38.5%	21 385	2 970	16.1%
Shoplifting	47 331	42 549	-4 782	-10.1%	49 688	7 139	16.8%	10 378	9 004	-1 374	-13.2%	10 060	1 056	11.7%
<b>Total other serious crimes</b>	<b>354 566</b>	<b>393 821</b>	<b>39 255</b>	<b>24.1%</b>	<b>437 038</b>	<b>43 217</b>	<b>11.0%</b>	<b>73 600</b>	<b>84 962</b>	<b>11 362</b>	<b>15.4%</b>	<b>96 174</b>	<b>11 212</b>	<b>13.2%</b>

- A total 96 174 cases of other serious crimes were recorded in the Western Cape
- A 13.2% increase in total serious crimes is noted (from 84 962 to 96 174 cases)
- The Western Cape accounted for 22.0% of all other serious crimes in the country
- All theft not mentioned elsewhere increased by 12.5%
- Commercial crimes increased by 16.1%
- Shoplifting increased by 11.7%.

## 1.6. Community Reported Serious Crime

There was a notable increase in community reported crime which indicates that community members are reporting incidents to the police.



- A total of 303 748 cases of 17 community reported serious crimes was recorded in the Western Cape in 2022/23
- A 10.2% increase in the total 17 community reported serious crimes is noted when compared to 275 555 cases reported in 2021/22 financial year
- Over the ten-year period, since 2013/14 the number of community reported crimes has reduced in the Western Cape, by 19.1%.

INITIATIVES SUCH AS THE LAW ENFORCEMENT ADVANCEMENT PLAN IN PARTNERSHIP WITH THE CITY OF CAPE TOWN, PROVIDED MORE BOOTS ON THE GROUND IN IDENTIFIED PRIORITY AREAS.





CRIMES  
DETECTED AS  
A RESULT OF  
POLICE ACTION  
WAS UP BY 15.2%  
IN ALL AREAS  
WHICH IS AN  
INDICATION  
OF GOOD/  
IMPROVED  
POLICE WORK.

## 1.7. Crimes Detected as a Result of Police Action

Crimes detected as a result of police action was up in all areas which is an indication of good/improved police work. High detection in the category of driving under the influence of alcohol and drugs is noted along with sexual offences detected as a result of police action.

CRIME CATEGORY	REPUBLIC OF SOUTH AFRICA							WESTERN CAPE						
	2020/21	2021/22	DIFF	%	2022/23	DIFF	%	2020/21	2021/22	DIFF	%	2022/23	DIFF	%
Illegal possession of firearms and ammunition	12 930	13 549	619	4.8%	15 598	2 049	15.1%	2 518	2 643	125	5.0%	2 788	145	5.5%
Drug-related crime	121 359	140 326	18 967	15.6%	162 052	21 726	15.5%	44 621	60 235	15 614	35.0%	67 022	6 787	11.3%
Driving under the influence of alcohol or drugs	35 860	43 873	8 013	22.3%	41 758	-2 115	-4.8%	3 760	5 730	1 970	52.4%	9 255	3 525	61.5%
Sexual offences detected as a result of police action	6 946	7 242	296	4.3%	9 575	2 333	32.2%	99	33	-66	-66.7%	41	8	24.2%
<b>Total crime detected as a result of police action</b>	<b>177 095</b>	<b>204 990</b>	<b>27 895</b>	<b>15.8%</b>	<b>228 983</b>	<b>23 993</b>	<b>11.7%</b>	<b>50 998</b>	<b>68 641</b>	<b>17 643</b>	<b>34.6%</b>	<b>79 106</b>	<b>10 465</b>	<b>15.2%</b>

- There were 79 106 total crimes detected as a result of police action in the Western Cape in 2022/23
- An increase of 15.2% in total crimes detected as a result of police action is noted (from 68 641 to 79 106 cases)
- The Western Cape accounted for 34.5% of all crimes detected as a result of police action, which is commendable
- Detection of illegal possession of firearms and ammunition increased by 5.5% in the Western Cape
- Detection of drug-related crimes increased by 11.3%
- Police detection of driving under the influence of alcohol or drugs increased by 61.5%
- Sexual offences detected as a result of police action increased by 24.2% (from 33 to 41 cases) when compared to the previous year

# Part 2



## 2. Western Cape District Crime Statistics

This section provides a breakdown of key crime statistics for 2022/23 per District. It is important to examine and understand the crime situation context in the metro and non-metro areas as they face differing challenges.

There is a risk of crime moving out of the metro areas<sup>2</sup>, though the crime statistics do not clearly illustrate this movement in the year in hand. Four of the six districts noted a decrease in murder during the period. The Western Cape Government has deployed various crime prevention strategies in the non-metro/rural districts including rural reaction and K-9 units as part of the Premier's Safety Plan and the impact of these initiatives can be noted.



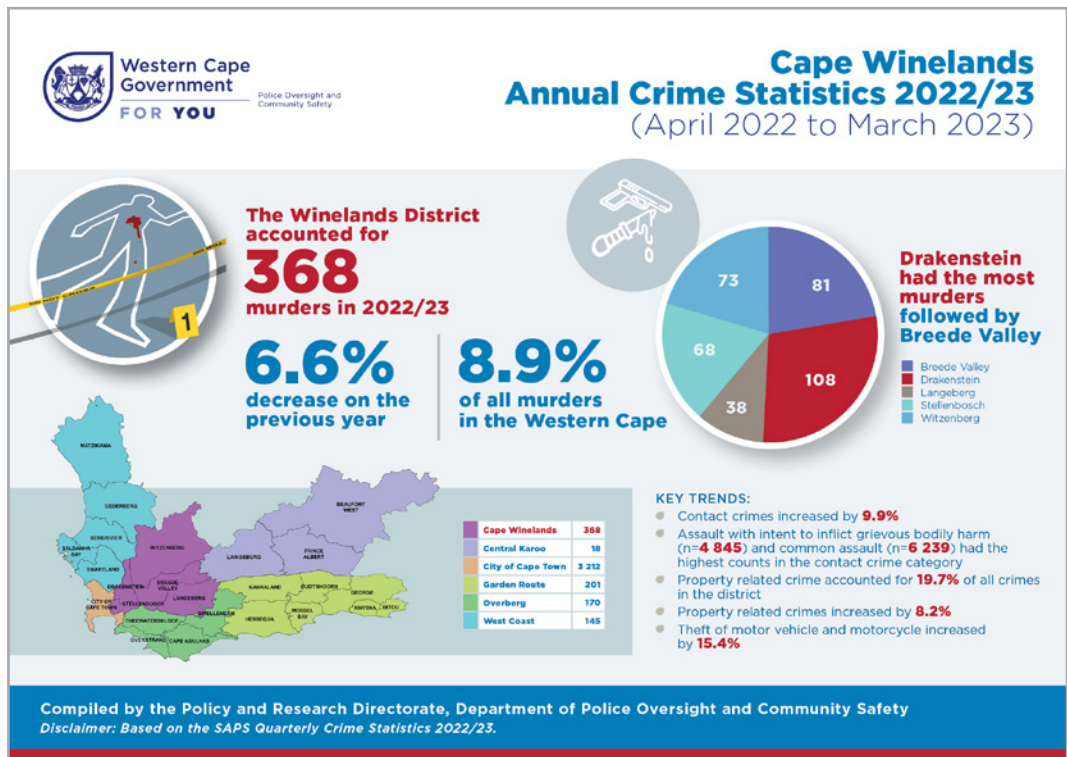
THE WESTERN  
CAPE  
GOVERNMENT  
HAS DEPLOYED  
VARIOUS CRIME  
PREVENTION  
STRATEGIES IN  
THE NON-METRO/  
RURAL DISTRICTS  
INCLUDING RURAL  
REACTION AND  
K-9 UNITS AS PART  
OF THE PREMIER'S  
SAFETY PLAN AND  
THE IMPACT OF  
THESE INITIATIVES  
CAN BE NOTED.

<sup>2</sup> <https://iafrica.com/crime-is-shifting-from-cape-metro-area-to-rural-towns-safety-mec/>

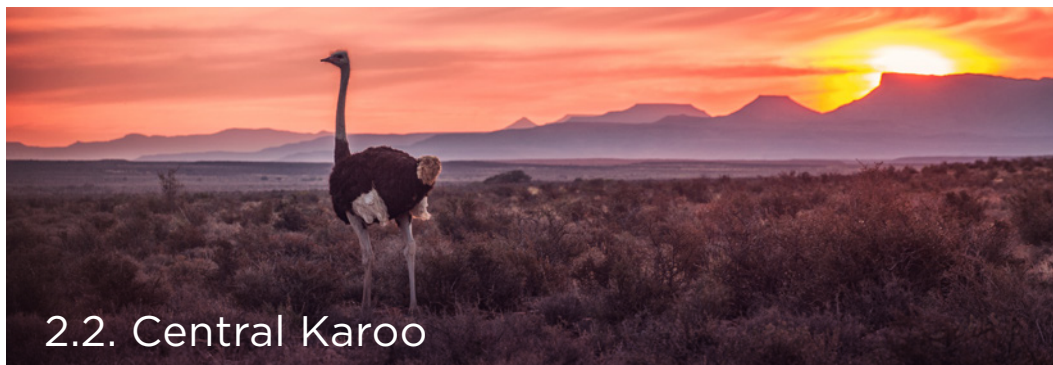


In the Winelands, murders decreased, however contact crime increased as did property crime with the highest increase being the category of theft from a motor vehicle.

THERE WERE  
368 MURDERS IN  
THE WINELANDS  
DISTRICT, A  
DECREASE OF 6.6%  
COMPARED TO THE  
PREVIOUS YEAR.  
THE CAPE  
WINELANDS  
DISTRICT  
ACCOUNTED  
FOR 8.9% OF ALL  
MURDERS IN THE  
WESTERN CAPE.

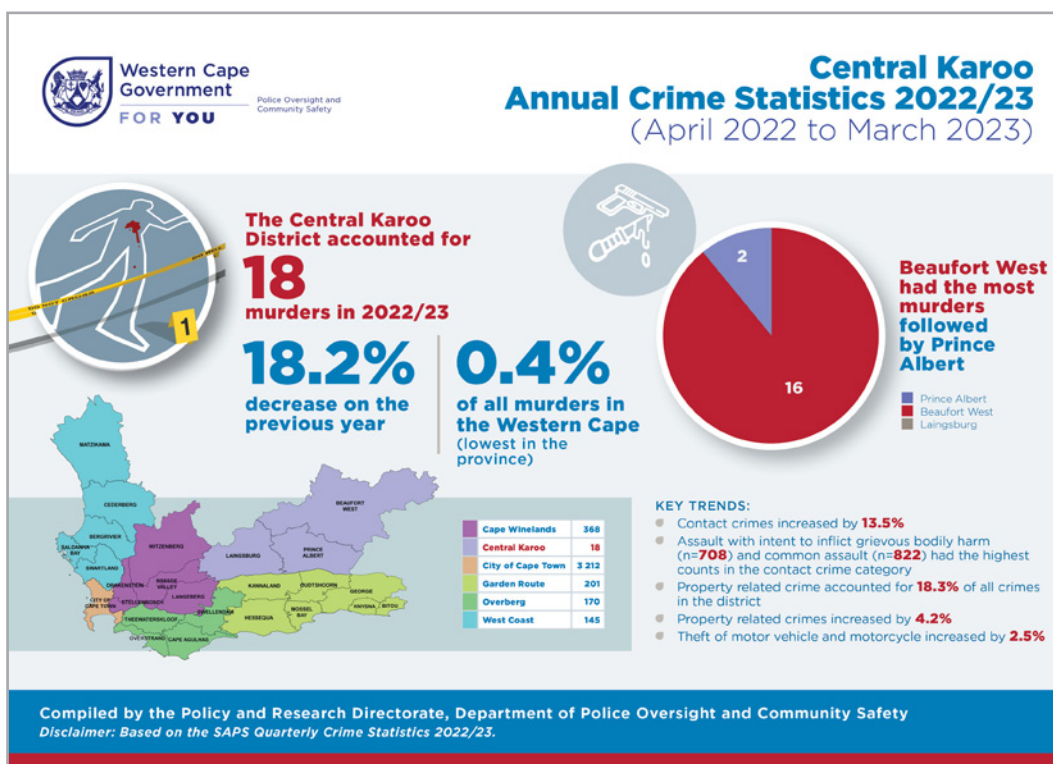


- There were 368 murders in the Winelands District
- This was a decrease of 6.6% compared to the previous year
- The Cape Winelands District accounted for 8.9% of all murders in the Western Cape
- Drakenstein had the most murders followed by Breede Valley
- An overall increase of 9.9% in contact crimes is noted.
- Assault with intent to inflict grievous bodily harm and common assault had the highest counts in the contact crime category
- Property related crime accounted for 19.7% of all crimes in the District
- Property related crimes increased by 8.2%
- Theft of a motor vehicle and motorcycle increased by 15.4%



## 2.2. Central Karoo

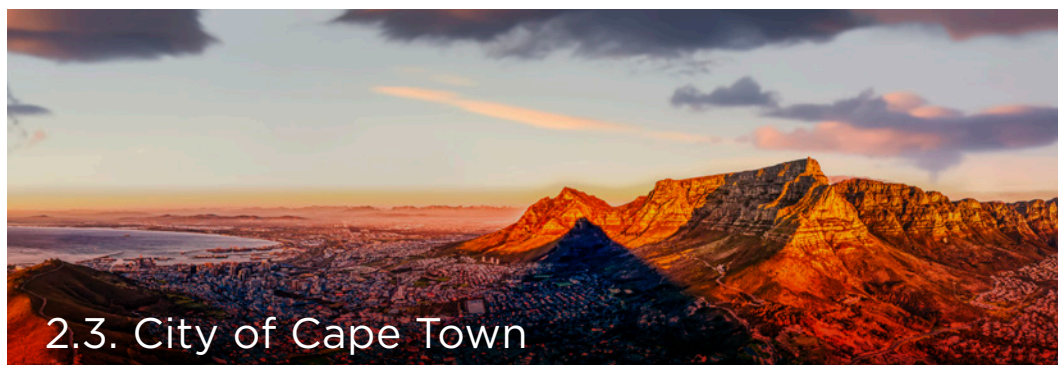
In the Central Karoo, murders decreased by almost one fifth but contact crimes increased as did property related crimes.



MURDERS DECREASED BY ALMOST ONE FIFTH IN THE CENTRAL KAROO. 18 MURDERS WERE REPORTED, A DECREASE OF 18.2% COMPARED TO THE PREVIOUS YEAR.

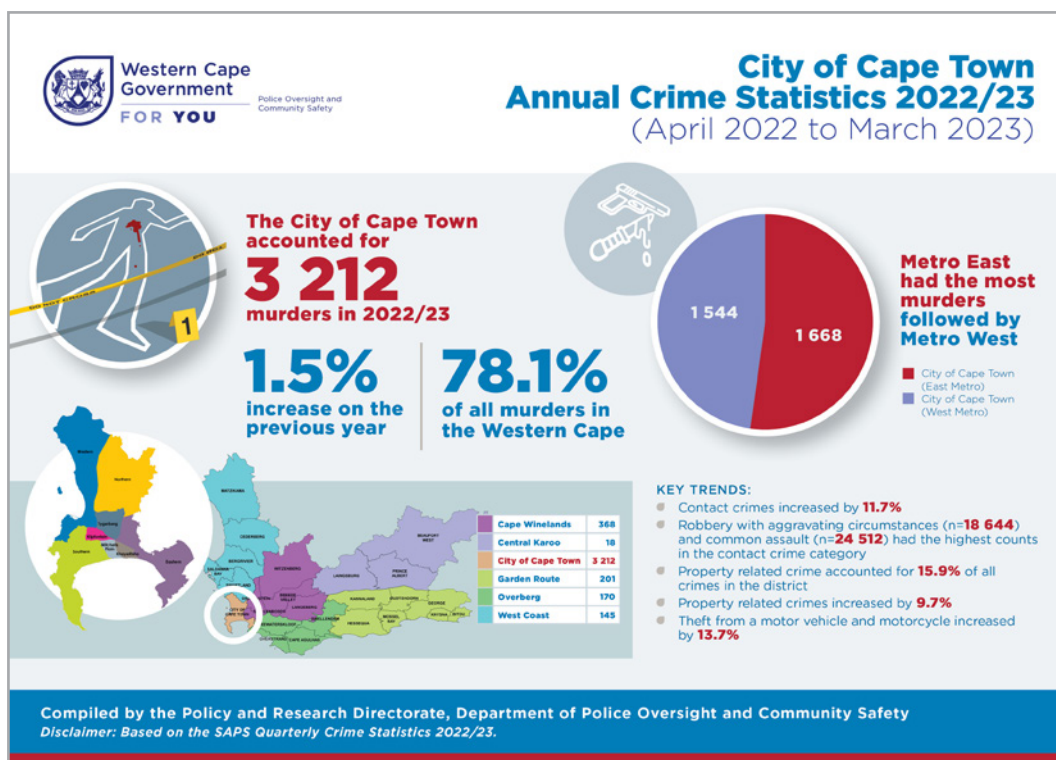
- There were 18 murders in the Central Karoo District
- This was a decrease of 18.2% compared to the previous year from 22 to 18 cases
- The Central Karoo district accounted for 0.4% of all murders in the Western Cape (lowest in the province)
- Beaufort West had the most murders (16) followed by Prince Albert (2)
- Contact crimes increased by 13.5%
- Assault with intent to inflict grievous bodily harm and common assault had the highest counts in the contact crime category
- Property related crime accounted for 18.3% of all crimes in the District
- Property related crimes increased by 4.2%
- Theft of a motor vehicle and motorcycle increased by 2.5%

THE CITY OF CAPE TOWN ACCOUNTED FOR 78.1% OF ALL MURDERS IN THE WESTERN CAPE (HIGHEST IN THE PROVINCE) WITH THE MOST RECORDED IN THE METRO EAST SUB-DISTRICT.



## 2.3. City of Cape Town

In the City of Cape Town, the largest of the Districts, murder increased only slightly. Robbery with aggravating circumstances and common assault had the highest counts in the contact crime category and property crime remains a problem as does theft from a motor vehicle and motorcycle.

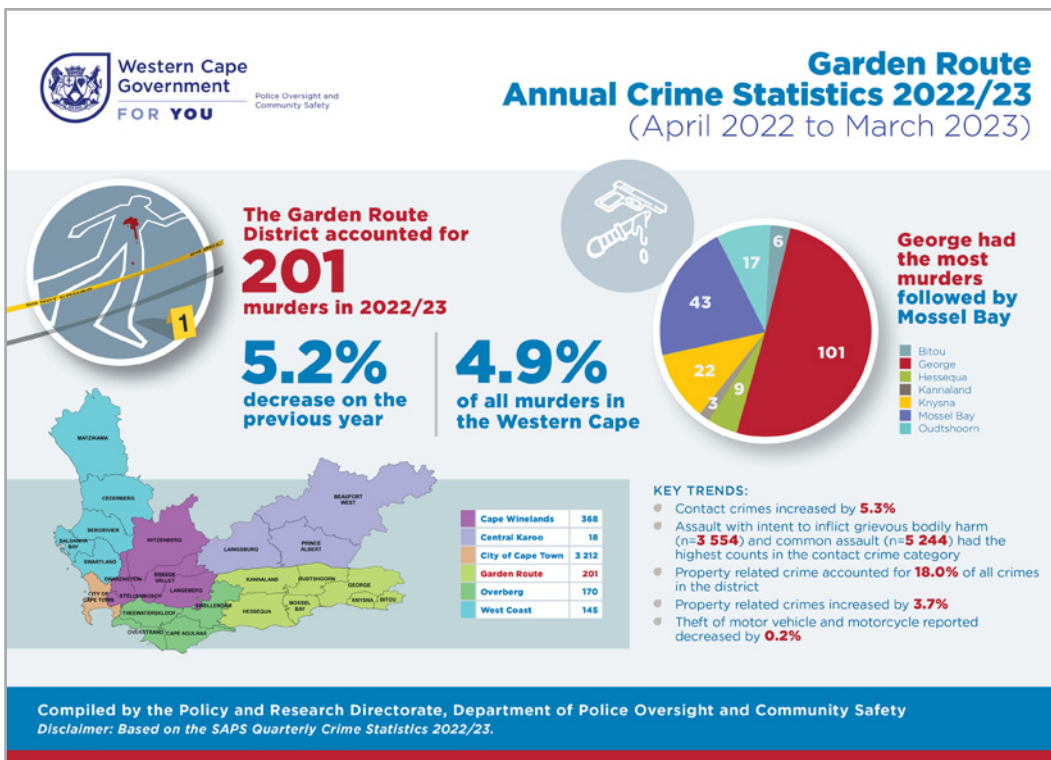


- There were 3 212 murders in the City of Cape Town District in the year
- This was an increase of 1.5% compared to the previous year from 3 165 to 3 212 cases
- The City of Cape Town accounted for 78.1% of all murders in the Western Cape (highest in the province). It also is home to 66% of the inhabitants of the province.
- Metro East sub-district had the most murders
- The City of Cape Town recorded an increase in contact crimes of 11.7%
- Robbery with aggravating circumstances and common assault had the highest counts in the contact crime category
- Property related crimes accounted for 15.9% of all crimes in the District
- Property related crimes increased by 9.7%
- Theft from a motor vehicle and motorcycle increased by 13.7%



## 2.4. Garden Route

In the Garden Route murders decreased in the year, contact crimes increased. Assault with intent to inflict grievous bodily harm and robbery with aggravating circumstances had the highest counts in the contact crime category and property related crimes increased.



MURDERS DECREASED IN THE GARDEN ROUTE, BUT CONTACT CRIMES INCREASED. ASSAULT WITH INTENT TO INFLICT GRIEVOUS BODILY HARM AND ROBBERY WITH AGGRAVATING CIRCUMSTANCES HAD THE HIGHEST COUNTS IN THE CONTACT CRIME CATEGORY.

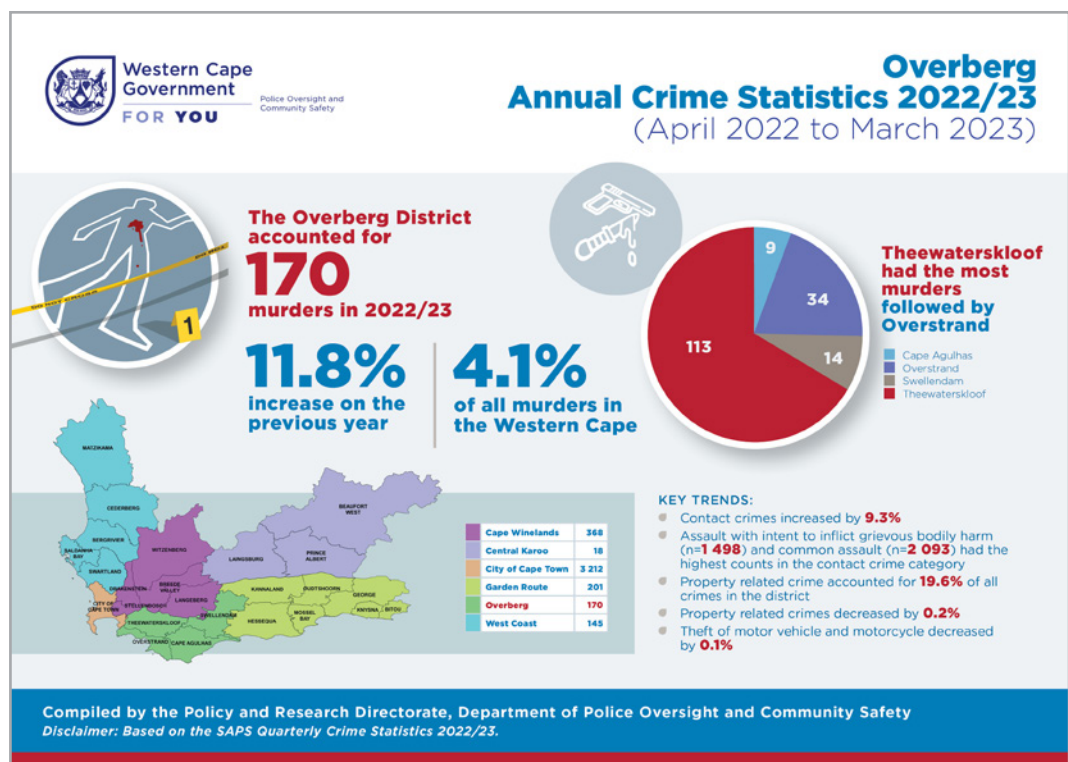
- There were 201 murders in the Garden Route District
- This was a decrease of 5.2% compared to the previous year from 212 to 201 cases
- The Garden Route District accounted for 4.9% of all murders in the Western Cape
- George had the most murders (101) followed by Mossel Bay (43)
- Contact crimes increased by 5.3%
- Assault with intent to inflict grievous bodily harm and robbery with aggravating circumstances had the highest counts in the contact crime category
- Property related crime accounted for 18.0% of all crimes in the District
- Property related crimes increased by 3.7%
- Theft of a motor vehicle and motorcycle decreased by 0.2%



## 2.5. Overberg

In the Overberg, murder increased as did contact crimes. There was a small decrease in property related crimes.

MURDER INCREASED  
BY 11.8% IN THE  
OVERBERG, AS DID  
CONTACT CRIMES  
BY 9.3%.



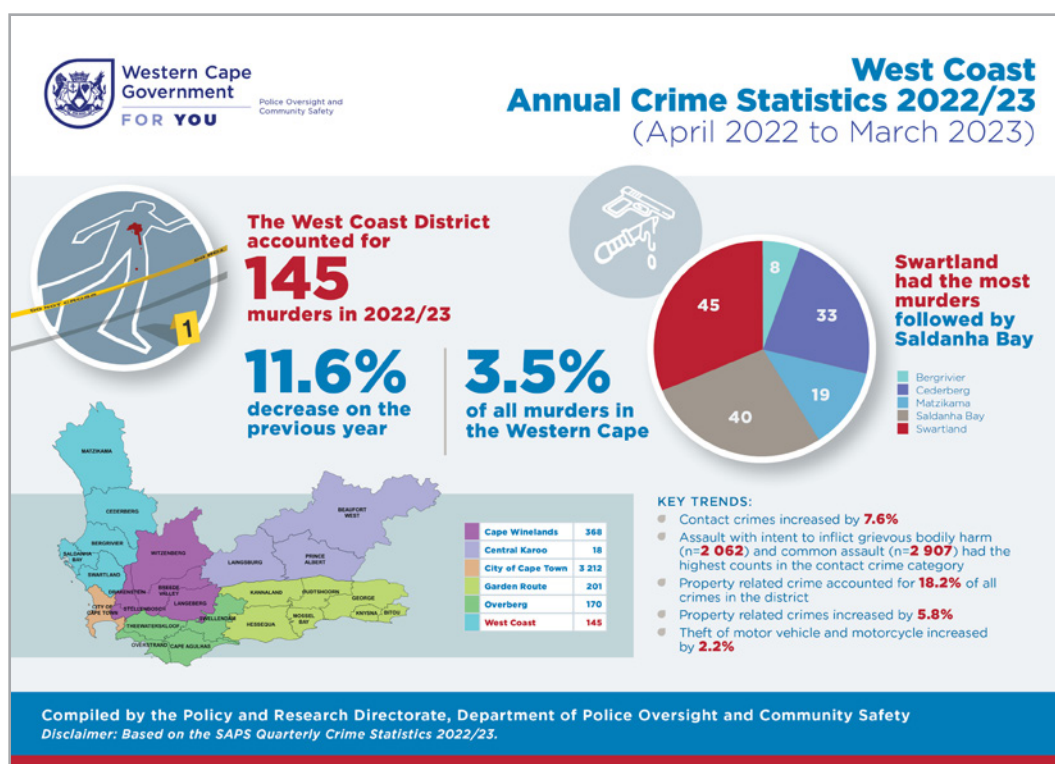
- There were 170 murders in Overberg District
- This was an increase of 11.8% on the previous year
- The Overberg District accounted for 4.1% of all murders in the Western Cape
- Theewaterskloof had the most murders followed by Overstrand
- Contact crimes increased by 9.3%
- Assault with intent to inflict grievous bodily harm and common assault had the highest counts in the contact crime category
- Property related crime accounted for 19.6% of all crimes in the District
- Property related crimes decreased by 0.2%
- Theft of a motor vehicle and motorcycle decreased by 0.1%



## 2.6. West Coast

In the West Coast, murders increased in the year as did contact crimes. Assault with intent to inflict grievous bodily harm and common assaults had the highest counts in the contact crime category.

MURDER INCREASED BY 11.6% IN THE WEST COAST, AS DID CONTACT CRIMES BY 7.6%..



- There were 145 murders in the West Coast District
- This was an increase of 11.6% on the previous year
- The West Coast District accounted for 3.5% of all murders in the Western Cape
- Swartland had the most murders followed by Saldanha Bay
- Contact crimes increased by 7.6%
- Assault with intent to inflict grievous bodily harm and common assault had the highest counts in the contact crime category
- Property related crimes increase by 5.8%
- Theft of a motor vehicle and motorcycle increased by 2

See full table of District Crime Stats in Appendix on page 16.

# Part 3



### 3. Conclusion

In conclusion, the crime statistics in the Western Cape reveal a complex and multifaceted picture of the region's safety and security. While there have been efforts to address and mitigate crime through various interventions, the data suggests that challenges still persist. It is evident that collaboration between law enforcement agencies, SAPS, community organisations, and government bodies is crucial to achieving sustained improvements in crime rates.

While a few crime categories have seen a decline, others continue to pose a significant concern, indicating the need for targeted strategies and resources. Factors such as socioeconomic disparities, substance abuse, and gang-related activities, appear to play pivotal roles in shaping the crime landscape.

It is important to approach crime reduction holistically, focusing not only on reactive measures but also on preventive measures that address root causes. Public awareness campaigns, community engagement, education, targeted substance abuse (drug and alcohol use reduction) approaches, economic opportunities, social support and urban design can all contribute to fostering a safer environment.

Ultimately, the interpretation of crime statistics should be done cautiously, recognising that they represent more than just numbers – they reflect the lived experiences of individuals and communities. Continued data collection, analysis, and an adaptive approach to law enforcement and social policies are essential to ensuring a safer and more secure Western Cape for all its residents.

IT IS EVIDENT THAT COLLABORATION BETWEEN LAW ENFORCEMENT AGENCIES, SAPS, COMMUNITY ORGANISATIONS, AND GOVERNMENT BODIES IS CRUCIAL TO ACHIEVING SUSTAINED IMPROVEMENTS IN CRIME RATES.



Broad Crime Category	Crime Category	CAPE WINELANDS				CENTRAL KAROO				CITY OF CAPE TOWN				GARDEN ROUTE				OVERBERG				WEST COAST				TOTAL				
		2021/22	2022/23	% DIFF		2021/22	2022/23	% DIFF		2021/22	2022/23	% DIFF		2021/22	2022/23	% DIFF		2021/22	2022/23	% DIFF		2021/22	2022/23	% DIFF		2021/22	2022/23	% DIFF		
CONTACT CRIMES	Murder	394	368	-7%		22	18	-18%		3 165	3 212	1%		212	201	-5%		152	170	12%		164	145	-12%		4 109	4 114	0.1%		
	Sexual offences	867	943	9%		83	67	-19%		4 451	4 571	3%		959	852	-11%		341	366	7.3%		462	511	11%		7 163	7 310	2%		
	Attempted murder	421	388	-8%		26	32	23%		2 662	2 539	-5%		312	253	-19%		128	152	19%		120	139	16%		3 669	3 503	-5%		
	A assault with the intent to inflict grievous bodily harm	4 470	4 845	8%		638	708	11%		10 049	10 793	7%		3 287	3 554	8%		8 1450	1 498	3%		2 007	2 062	3%		21 901	23 460	7%		
	Common assault	5 644	6 239	11%		682	822	21%		21 896	24 512	12%		4 952	5 244	6%		1 839	2 093	14%		2 689	2 907	8%		37 702	41 817	11%		
	Common robbery	916	1 066	17%		60	61	2%		6 394	7 884	23%		495	600	21%		169	199	18%		187	263	41%		8 221	10 073	23%		
	Robbery with aggravating circumstances	1 370	1 631	19%		49	62	27%		15 975	18 644	17%		1 039	1 150	11%		437	458	5%		422	485	15%		19 292	22 430	16%		
	Total	14 082	15 480	10%		1 560	1 770	13%		64 592	72 155	12%		11 256	11 854	5%		4 516	4 936	9%		6 051	6 512	8%		102 057	112 707	10%		
	% Contribution per District	14%	14%			2%	2%			63%	64%			11%	11%			4%	4%			6%	6%			100%	100%			
SEXUAL OFFENCES	Rape	552	643	16%		47	40	-15%		3 080	3 188	4%		625	574	-8%		231	248	7%		308	343	11%		4 843	5 036	4%		
	Sexual Assault	206	205	0%		27	23	-15%		1 011	1 060	5%		204	193	-5%		72	76	6%		107	122	14%		1 627	1 679	3%		
	Attempted Sexual Offences	63	66	5%		7	3	-57%		192	209	9%		71	59	-17%		22	29	32%		34	39	15%		389	405	4%		
	Contact Sexual Offences	46	29	-37%		2	1	-50%		168	114	-32%		59	26	-56%		16	13	-19%		13	7	-46%		304	190	-38%		
		Total	867	943	9%		83	67	-19%		4 451	4 571	3%		959	852	-11%		341	366	7%		462	511	11%		7 163	7 310	2%	
		% Contribution per District	12%	13%			1%	1%			62%	63%			13%	12%			5%	5%			6%	7%			100%	100%		
	SUBCATEGORY OF ROBBERY AGGRAVATED	Carjacking	34	36	6%		1	1	0%		2 498	3 034	21%		11	12	9%		8	5	-38%		7	7	-30%		2 562	3 095	21%	
Robbery at residential premises		147	151	3%		5	9	80%		2 222	1 915	-14%		121	131	8%		96	76	-21%		76	79	4%		2 667	2 361	-11%		
Robbery at non-residential premises		205	209	2%		6	12	100%		1 104	1 035	-6%		151	137	-9%		70	69	-1%		74	114	54%		1 610	1 576	-2%		
Robbery of cash in transit		3	3	0%		0	0	0%																						

## NOTES

Department of Police Oversight and Community Safety  
Chief Directorate: Secretariat of Police Oversight and Community Safety  
Chief Director: David Coetzee  
Compiled by – Directorate: Policy and Research  
Contact Person: Amanda Dissel  
**email:** [Amanda.Dissel@westerncape.gov.za](mailto:Amanda.Dissel@westerncape.gov.za)  
**tel:** +27 21 483 6548 **fax:** +27 21 483 5447

---

[www.westerncape.gov.za](http://www.westerncape.gov.za)



Western Cape  
Government

PR 329/2023  
ISBN: 978-0-621-51645-6